

Converting Colors

HunterLab(74.9964, 0.4053,
9.1659)

Have a look what the booklet for
HunterLab(74.9964, 0.4053, 9.1659)
contains.

HunterLab(74.8467, 0.4854, 8.8867)	3
<i>Conversions</i>	4
<i>Details</i>	6
<i>Harmonies</i>	12
<i>Previews</i>	24
<i>Color Blindness Simulation</i>	28
<i>CSS Examples</i>	31

Color

**HunterLab(74.8467, 0.4854,
8.8867)**

Conversions

Conversions Part 1

Format	Color
Hex	D3C2BB
RGB	211, 194, 187
RGB Percent	83%, 76%, 73%
CMY	0.1725, 0.2392, 0.2667
CMYK	0.00, 0.08, 0.11, 0.17
HSL	18°, 21%, 78%
HSV	18°, 11%, 83%
XYZ	55.1254, 56.0203, 54.9212
YIQ	198.2850, 12.3790, 1.4270

Conversions

Conversions Part 2

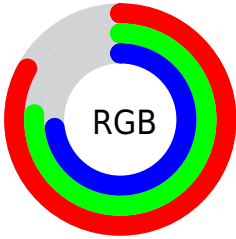
Format	Color
R _Y B	211, 197, 187
Decimal	13877947
CIE Lab	79.63, 4.79, 5.67
CIE LCh	80, 7.422, 49.783
Yxy	56.0228, 0.3319, 0.3373
Android (android.graphics.Color)	4292068027 (0xFFD3C2BB)
YUV	198.2850, -5.5635, 11.1511
Hunter-Lab	74.8467, 0.4854, 8.8867

Details

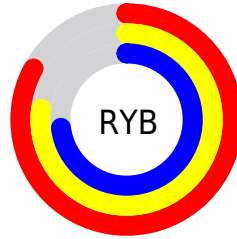
The HunterLab color $74.8467, 0.4854, 8.8867$ is a light color, and the websafe version is hex `CCCCCC`. A complement of this color would be $76.4543, -8.0838, -0.8235$, and the grayscale version is $75.2891, -4.0172, 4.0906$.

A 20% lighter version of the original color is $98.0318, -4.7609, 9.0396$, and $52.4836, 1.3137, 6.8839$ is the 20% darker color. If you saturate the color by 10%, you get $69.9027, 5.0178, 12.6026$, and if you desaturate by 10%, it is $79.9896, -3.7473, 4.9430$.

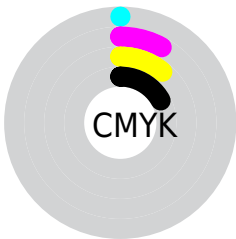
Distribution



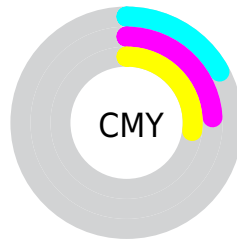
- Red (83%)
- Green (76%)
- Blue (73%)



- Red (83%)
- Yellow (77%)
- Blue (73%)



- Cyan (0%)
- Magenta (8%)
- Yellow (11%)
- Black (17%)



- Cyan (17%)
- Magenta (24%)
- Yellow (27%)

Brightness & Saturation Gradients

These gradients show how the HunterLab color 74.8467, 0.4854, 8.8867 changes by changing the brightness by 10 percent. The first figure shows a shift by +10% for each color and the second figure -10%.

Similar to the brightness gradients but the following saturation gradients show a change of the HunterLab color 74.8467, 0.4854, 8.8867 by changing the saturation by 10% instead.

■ 74.8467, 0.4854,
8.8867

■ 74.8467, 0.4854,
8.8867

202.4296, -4.6038,
17.8392

■ 63.4202, 0.8587,
7.9887

■ 99.5178, -0.3978,
10.7421

■ 52.6413, 1.1856,
7.1070

112.7032, -0.8977,
11.6980

■ 42.5534, 1.4590,
6.2410

126.4245, -1.4341,
12.6733

■ 33.2077, 1.6725,
5.3879

140.6614, -2.0051,
13.6681

■ 24.6685, 1.8171,
4.5428

155.3959, -2.6089,
14.6822

■ 17.0207, 1.8797,
3.6960

170.6117, -3.2441,

■ 10.3837, 1.8393,

15.7155

2.9053

186.2941, -3.9094,
16.7679

0.0000, INF, NaN

0.0000, NaN, NaN

■ 74.8467, 0.4854,
8.8867

■ 74.8467, 0.4854,
8.8867

■ 69.9027, 5.0178,
12.6026

■ 79.9896, -3.7473,
4.9430

■ 65.1776, 9.8826,
16.0399

■ 85.3051, -7.7034,
0.8052

■ 60.7024, 15.0960,
19.1404

■ 90.7773, -11.4145,
-3.4967

■ 56.5115, 20.6598,
21.8309

■ 95.8175, -18.1170,
0.1837

■ 52.6441, 26.5470,

■ 96.2232, -18.7349,

24.0252

0.6697

■ 49.1434, 32.6860,
25.6293

■ 46.0546, 38.9422,
26.5555

■ 43.4203, 45.1034,
26.7518

■ 41.5311, 50.0877,
26.4681

Harmonies

Analogous

The Analogous color harmony consists of three colors that are next to each other on the color wheel.



74.8484, 2.5673, 6.2494



74.8467, 0.4854, 8.8867



74.8484, -2.7771, 10.2160

Triad

The Triadic color harmony groups three colors that are evenly spaced from another and form a triangle on the color wheel.



74.8484, 0.4833, 8.8879



74.8484, -10.6299, 5.2225



74.8484, -1.6618, -2.3301

Complementary

The Complementary color scheme is a pair of colors which are on the opposite of each other on the color wheel.



74.8467, 0.4854, 8.8867



76.4543, -8.0838, -0.8235

Split Complementary

Split-complementary colors differ from the complementary color scheme. The scheme consists of three colors, the original color and two neighbors of the complement color.



74.8484, -5.2106, -2.6367



74.8467, 0.4854, 8.8867



74.8484, -10.3440, 1.8317

Square

The Square scheme is like the rectangle color scheme, but the four colors are evenly spaced on the color wheel.



74.8484, 0.4833, 8.8879



74.8484, -9.1643, 8.1664



74.8484, -8.3758, -1.0821



74.8484, 1.3129, -0.2630

Rectangle

The Rectangle color scheme consists of four colors that form a rectangle on the color wheel.



74.8467, 0.4854, 8.8867



74.8484, -5.1598, 10.2239



74.8484, -8.3758, -1.0821



74.8484, -2.8285, -2.6460

Sweetspot

The Sweet Spot groups the original color and five complimentary colors.



74.8484, 0.4833, 8.8879



98.0352, -3.7981, 6.9527



73.3209, 6.9448, -0.9955



45.1142, -1.5646, 3.4028

0.0000, NaN, NaN



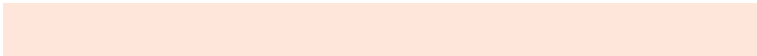
46.2646, -2.4686, 2.5136

Same Dimension

The Same Dimension uses a secret algorithm to generate beautiful new colors.



74.8484, 0.4833, 8.8879



91.0095, 2.1203, 12.3215



78.4116, -5.5108, 12.6710



35.1601, -0.1732, 3.7675



32.5023, 38.2162, 20.6968



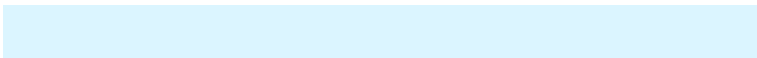
8.5323, 6.7597, 5.3759

Inverse Universe

The Inverse Universe completely reimagines the original color for something new.



76.4543, -8.0838, -0.8235



93.4766, -11.0480, -2.6011



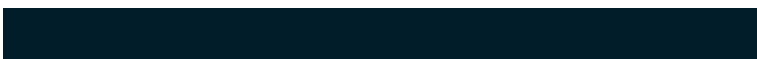
72.8395, -2.1317, -5.3186



35.7770, -3.4632, 0.0375



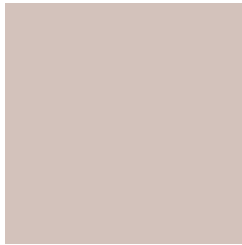
40.0951, -9.1094, -30.4508



10.1598, -3.1355, -5.9303

Previews

White Background



This preview shows how the HunterLab color 74.8467, 0.4854, 8.8867 looks on a white background.

Color Contrast Check

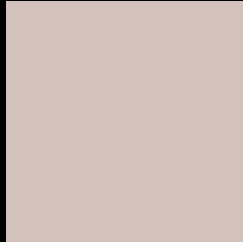
Large Text (above 18pt) WCAG AA × Fail

Any Text WCAG AA × Fail

Large Text (above 18pt) WCAG AAA × Fail

Any Text WCAG AAA × Fail

Black Background



This preview shows how the HunterLab color 74.8467, 0.4854, 8.8867 looks on a black background.

Color Contrast Check

Large Text (above 18pt) WCAG AA ✓ Pass

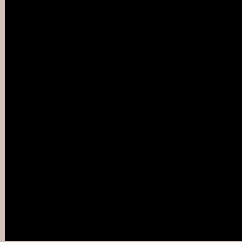
Any Text WCAG AA ✓ Pass

Large Text (above 18pt) WCAG AAA ✓ Pass

Any Text WCAG AAA ✓ Pass

If you want to check with other color combinations, try the [Color Contrast Checker](#).

HunterLab 74.8467, 0.4854, 8.8867 Background



This preview shows how black text looks on a background with the HunterLab color 74.8467, 0.4854, 8.8867.



This preview shows how white text looks on a background with the HunterLab color 74.8467, 0.4854,

Color Blindness Simulation

Color vision deficiency is a very complex topic, and I could not describe the different causes any better than Wikipedia does, so if you want to learn more, you should check out their [article about color blindness](#).

Dichromacy



Original Color

74.8467, 0.4854, 8.8867

Protanopia

75.0066, -3.5334, 8.5490

Deuteranopia

74.9053, 5.2788, 8.5900



Tritanopia

74.8425, 6.1707, -0.0328

Trichromacy



Original Color

74.8467, 0.4854, 8.8867

Protanomaly

74.9883, -2.0454, 8.5546

Deuteranomaly

74.8878, 3.7179, 8.5431

Tritanomaly

74.8124, 4.1218, 3.3493

Monochromacy



Original Color

74.8467, 0.4854, 8.8867

Achromatopsia

75.1473, -4.0097, 4.0829

Achromatomaly

75.1825, -2.5720, 6.0320

CSS Examples

Text

The CSS property to change the color of the text to HunterLab 74.8467, 0.4854, 8.8867 is called "color". The color property can be set on classes, ids or directly on the HTML element.

This example shows how text in the color `rgb(211, 194, 187)` looks like.

```
.text, #text, p{  
    color:rgb(211, 194, 187)  
}
```

If you want to add a text shadow in that color use the text-shadow property, you can generate a text shadow directly with our [CSS Text Shadow Generator](#).

Here you see how black text with a 4 pixel rgb(211, 194, 187) colored shadow looks like.

```
.shadow{ text-shadow: 4px 4px 2px rgb(211, 194, 187) }
```

Border

The CSS property to change the border of an element to HunterLab 74.8467, 0.4854, 8.8867 is called "border".

The border property can be set on classes, ids or directly on the HTML element.

This example shows the color as border, it can be applied via the CSS property "border" or "border-color".

```
.border, #border, table{ border:4px solid rgb(211, 194, 187) }
```


If only the border color should be changed use the property `border-color`.

```
.border{ border-color:rgb(211, 194, 187) }
```

If you want to add a box shadow in that color use:

Here you see how a box with a 4 pixel `rgb(211, 194, 187)` colored shadow looks like.

```
.boxshadow{ -moz-box-shadow:4px 4px 4px  
4px rgb(211, 194, 187); -webkit-box-  
shadow:4px 4px 4px 4px rgb(211, 194, 187);  
box-shadow:4px 4px 4px 4px rgb(211, 194,  
187) }
```

Background

The CSS property to change the background color of an element to HunterLab 74.8467, 0.4854, 8.8867 is called "background". The background property can be set on classes, ids or directly on the HTML element.

```
.background, #background, body{  
background: rgb(211, 194, 187) }
```

If only the background color should be changed can be used:

```
.background{ background-color: rgb(211,  
194, 187) }
```

This example shows the color as background, it is applied via the CSS property "background".

To optimize and compress your CSS code, you can use our [online CSS compressor and optimizer](#) based on csstidy. If you want to create a linear or radial gradient as background or border, check our [CSS Gradient Generator](#).

Hey! You found this booklet interesting? Support Converting Colors with the new Membership Option!

The pro membership hides all ads, plus gives you double the colors in the color bucket, and more awesome pro features!

[Learn more, Memberships starting at \\$2.50/m!](#)

**Follow me
on Twitter!**

@ConvertingColor