

Converting Colors

HunterLab(75.0425, 6.1368,
11.9399)

Have a look what the booklet for
HunterLab(75.0425, 6.1368,
11.9399) contains.

HunterLab(74.9471, 6.5163, 11.7127)	3
<i>Conversions</i>	4
<i>Details</i>	6
<i>Harmonies</i>	12
<i>Previews</i>	24
<i>Color Blindness Simulation</i>	28
<i>CSS Examples</i>	31

Color

**HunterLab(74.9471, 6.5163,
11.7127)**

Conversions

Conversions Part 1

Format	Color
Hex	E1BEB5
RGB	225, 190, 181
RGB Percent	88%, 75%, 71%
CMY	0.1176, 0.2549, 0.2902
CMYK	0.00, 0.16, 0.20, 0.12
HSL	12°, 42%, 80%
HSV	12°, 20%, 88%
XYZ	57.8053, 56.1707, 51.5115
YIQ	199.4390, 23.7490, 4.6210

Conversions

Conversions Part 2

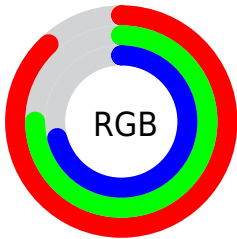
Format	Color
RYB	225, 192, 181
Decimal	14794421
CIELab	79.71, 11.07, 9.18
CIELCh	80, 14.384, 39.659
Yxy	56.1732, 0.3493, 0.3394
Android (android.graphics.Color)	4292984501 (0xFFE1BEB5)
YUV	199.4390, -9.0904, 22.4170
Hunter-Lab	74.9471, 6.5163, 11.7127

Details

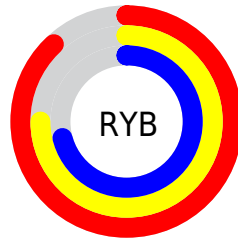
The HunterLab color $74.9471, 6.5163, 11.7127$ is a light color, and the websafe version is hex `FFCCCC`. A complement of this color would be $80.2310, -13.1397, -3.4338$, and the grayscale version is $75.7915, -4.0440, 4.1179$.

A 20% lighter version of the original color is $96.5847, -3.6500, 10.2677$, and $52.8061, 6.3078, 9.7197$ is the 20% darker color. If you saturate the color by 10%, you get $69.3112, 12.7255, 15.0673$, and if you desaturate by 10%, it is $80.8746, 0.6582, 8.1953$.

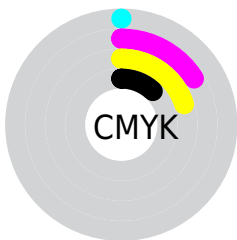
Distribution



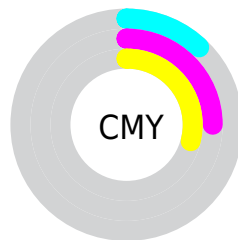
- Red (88%)
- Green (75%)
- Blue (71%)



- Red (88%)
- Yellow (75%)
- Blue (71%)



- Cyan (0%)
- Magenta (16%)
- Yellow (20%)
- Black (12%)




- Cyan (12%)
- Magenta (25%)
- Yellow (29%)

Brightness & Saturation Gradients


These gradients show how the HunterLab color 74.9471, 6.5163, 11.7127 changes by changing the brightness by 10 percent. The first figure shows a shift by +10% for each color and the second figure -10%.


Similar to the brightness gradients but the following saturation gradients show a change of the HunterLab color 74.9471, 6.5163, 11.7127 by changing the saturation by 10% instead.

 74.9471, 6.5163,
11.7127

 74.9471, 6.5163,
11.7127

202.5695, 3.6421,
21.9552

 63.5152, 6.5909,
10.6341


 99.6282, 6.1893,
13.8995

 52.7306, 6.6033,
9.5591


112.8183, 5.9509,
15.0091

 42.6366, 6.5432,
8.4843


126.5441, 5.6664,
16.1314

 33.2843, 6.4003,
7.4025

140.7853, 5.3388,
17.2672

 24.7379, 6.1604,
6.3024

155.5240, 4.9705,
18.4171

 17.0820, 5.8031,
5.1635

170.7439, 4.5638,

 10.4358, 5.2978,

19.5816

4.3002

186.4302, 4.1204,
20.7609

0.0000, INF, NaN

0.0000, NaN, NaN

■ 74.9471, 6.5163,
11.7127

■ 74.9471, 6.5163,
11.7127

■ 69.3112, 12.7255,
15.0673

■ 80.8746, 0.6582,
8.1953

■ 64.0057, 19.3058,
18.2011

■ 87.0523, -4.8694,
4.5501

■ 59.0842, 26.2372,
21.0407

■ 93.4519, -10.1027,
0.8055

■ 54.6075, 33.4502,
23.4879

■ 97.3384, -14.7224,
2.0950

■ 50.6429, 40.7949,

25.4232

■ 47.2602, 48.0149,
26.7192

■ 44.5218, 54.7393,
27.2775

■ 42.4619, 60.4945,
27.1838

■ 42.3853, 60.7170,
27.1806

Harmonies

Analogous

The Analogous color harmony consists of three colors that are next to each other on the color wheel.



74.9488, 9.5649, 6.1717



74.9471, 6.5163, 11.7127



74.9488, 0.6766, 15.0000

Triad

The Triadic color harmony groups three colors that are evenly spaced from another and form a triangle on the color wheel.



74.9488, 6.5138, 11.7139



74.9488, -16.0711, 8.3459



74.9488, -1.7583, -9.4961

Complementary

The Complementary color scheme is a pair of colors which are on the opposite of each other on the color wheel.



74.9471, 6.5163, 11.7127



80.2310, -13.1397, -3.4338

Split Complementary

Split-complementary colors differ from the complementary color scheme. The scheme consists of three colors, the original color and two neighbors of the complement color.



74.9488, -8.5707, -8.7800



74.9471, 6.5163, 11.7127



74.9488, -16.6697, 1.9255

Square

The Square scheme is like the rectangle color scheme, but the four colors are evenly spaced on the color wheel.



74.9488, 6.5138, 11.7139



74.9488, -12.3044, 13.1813



74.9488, -13.9703, -4.4530



74.9488, 4.6760, -6.3293

Rectangle

The Rectangle color scheme consists of four colors that form a rectangle on the color wheel.



74.9471, 6.5163, 11.7127



74.9488, -3.9239, 15.6612



74.9488, -13.9703, -4.4530



74.9488, -4.0822, -9.7076

Sweetspot

The Sweet Spot groups the original color and five complimentary colors.



74.9488, 6.5138, 11.7139



95.6732, -1.5207, 7.9834



73.5012, 17.0760, -6.9247



44.0476, -0.5078, 3.8206

0.0000, NaN, NaN



46.2646, -2.4686, 2.5136

Same Dimension

The Same Dimension uses a secret algorithm to generate beautiful new colors.



74.9488, 6.5138, 11.7139



83.9912, 10.0387, 14.9174



81.4441, -4.7009, 18.2780



37.6199, 0.2763, 3.7902



32.3828, 45.4395, 20.7496



9.2445, 9.8479, 5.8688

Inverse Universe

The Inverse Universe completely reimagines the original color for something new.



80.2310, -13.1397, -3.4338



91.1606, -16.6772, -5.6512



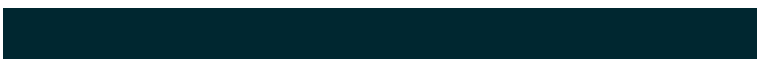
73.4394, -2.1686, -12.2950



38.8214, -4.1821, 0.3475



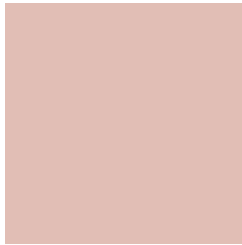
46.7677, -16.1907, -23.5046



12.7978, -4.9170, -5.3817

Previews

White Background



This preview shows how the HunterLab color 74.9471, 6.5163, 11.7127 looks on a white background.

Color Contrast Check

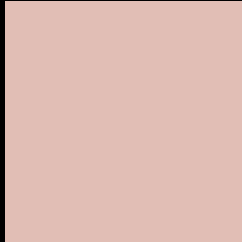
Large Text (above 18pt) WCAG AA × Fail

Any Text WCAG AA × Fail

Large Text (above 18pt) WCAG AAA × Fail

Any Text WCAG AAA × Fail

Black Background



This preview shows how the HunterLab color 74.9471, 6.5163, 11.7127 looks on a black background.

Color Contrast Check

Large Text (above 18pt) WCAG AA ✓ Pass

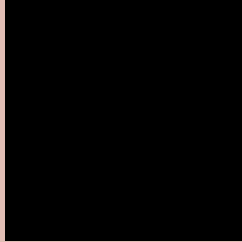
Any Text WCAG AA ✓ Pass

Large Text (above 18pt) WCAG AAA ✓ Pass

Any Text WCAG AAA ✓ Pass

If you want to check with other color combinations, try the [Color Contrast Checker](#).

HunterLab 74.9471, 6.5163, 11.7127 Background



This preview shows how black text looks on a background with the HunterLab color 74.9471, 6.5163, 11.7127.



This preview shows how white text looks on a background with the HunterLab color 74.9471, 6.5163,

Color Blindness Simulation

Color vision deficiency is a very complex topic, and I could not describe the different causes any better than Wikipedia does, so if you want to learn more, you should check out their [article about color blindness](#).

Dichromacy



Original Color

74.9471, 6.5163, 11.7127

Protanopia

75.0151, -3.6745, 9.8823

Deuteranopia

75.0238, 5.2833, 11.7738



Tritanopia

75.0011, 12.2786, 2.7474

Trichromacy



Original Color

74.9471, 6.5163, 11.7127

Protanomaly

74.8607, 0.3635, 10.2199

Deuteranomaly

75.1299, 5.6390, 11.8942

Tritanomaly

74.9616, 10.2602, 6.0019

Monochromacy



Original Color

74.9471, 6.5163, 11.7127

Achromatopsia

75.5728, -4.0324, 4.1060

Achromatomaly

75.2964, -0.7516, 7.1161

CSS Examples

Text

The CSS property to change the color of the text to HunterLab 74.9471, 6.5163, 11.7127 is called "color". The color property can be set on classes, ids or directly on the HTML element.

This example shows how text in the color `rgb(225, 190, 181)` looks like.

```
.text, #text, p{  
  color:rgb(225, 190, 181)  
}
```

If you want to add a text shadow in that color use the text-shadow property, you can generate a text shadow directly with our [CSS Text Shadow Generator](#).

Here you see how black text with a 4 pixel rgb(225, 190, 181) colored shadow looks like.

```
.shadow{ text-shadow: 4px 4px 2px rgb(225, 190, 181) }
```

Border

The CSS property to change the border of an element to HunterLab 74.9471, 6.5163, 11.7127 is called "border". The border property can be set on classes, ids or directly on the HTML element.

This example shows the color as border, it can be applied via the CSS property "border" or "border-color".

```
.border, #border, table{ border:4px solid rgb(225, 190, 181) }
```


If only the border color should be changed use the property `border-color`.

```
.border{ border-color:rgb(225, 190, 181) }
```

If you want to add a box shadow in that color use:

Here you see how a box with a 4 pixel `rgb(225, 190, 181)` colored shadow looks like.

```
.boxshadow{ -moz-box-shadow:4px 4px 4px  
4px rgb(225, 190, 181); -webkit-box-  
shadow:4px 4px 4px 4px rgb(225, 190, 181);  
box-shadow:4px 4px 4px 4px rgb(225, 190,  
181) }
```

Background

The CSS property to change the background color of an element to HunterLab 74.9471, 6.5163, 11.7127 is called "background". The background property can be set on classes, ids or directly on the HTML element.

```
.background, #background, body{  
background: rgb(225, 190, 181) }
```

If only the background color should be changed can be used:

```
.background{ background-color: rgb(225,  
190, 181) }
```

This example shows the color as background, it is applied via the CSS property "background".

To optimize and compress your CSS code, you can use our [online CSS compressor and optimizer](#) based on csstidy. If you want to create a linear or radial gradient as background or border, check our [CSS Gradient Generator](#).

Hey! You found this booklet interesting? Support Converting Colors with the new Membership Option!

The pro membership hides all ads, plus gives you double the colors in the color bucket, and more awesome pro features!

[Learn more, Memberships starting at \\$2.50/m!](#)

**Follow me
on Twitter!**

@ConvertingColor