

# Converting Colors

HunterLab(75.0437, 4.1112,  
5.7428)

Have a look what the booklet for  
HunterLab(75.0437, 4.1112, 5.7428)  
contains.

<b>HunterLab(74.9922, 4.4826, 5.4691)</b> .....	3
<i><b>Conversions</b></i> .....	4
<i><b>Details</b></i> .....	6
<i><b>Harmonies</b></i> .....	12
<i><b>Previews</b></i> .....	24
<i><b>Color Blindness Simulation</b></i> .....	28
<i><b>CSS Examples</b></i> .....	31

# Color

**HunterLab(74.9922, 4.4826,  
5.4691)**

# Conversions

## Conversions Part 1

Format	Color
Hex	D8C0C3
RGB	216, 192, 195
RGB Percent	85%, 75%, 76%
CMY	0.1529, 0.2470, 0.2353
CMYK	0.00, 0.11, 0.10, 0.15
HSL	353°, 24%, 80%
HSV	353°, 11%, 85%
XYZ	57.0188, 56.2383, 59.4795
YIQ	199.5180, 13.3410, 6.0210

# Conversions

## Conversions Part 2

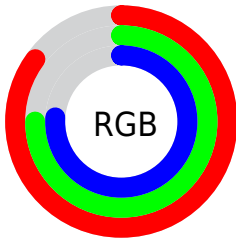
Format	Color
R <sub>Y</sub> B	216, 192, 195
Decimal	14205123
CIE Lab	79.75, 8.98, 1.59
CIE LCh	80, 9.119, 10.062
Yxy	56.2408, 0.3301, 0.3256
Android (android.graphics.Color)	4292395203 (0xFFD8C0C3)
YUV	199.5180, -2.2274, 14.4547
Hunter-Lab	74.9922, 4.4826, 5.4691

# Details

The HunterLab color  $74.9922, 4.4826, 5.4691$  is a light color, and the websafe version is hex `CCCCCC`. A complement of this color would be  $80.6993, -12.2546, 3.2594$ , and the grayscale version is  $75.8000, -4.0445, 4.1184$ .

A 20% lighter version of the original color is  $97.6847, -2.1452, 4.2577$ , and  $52.8823, 4.4597, 4.4112$  is the 20% darker color. If you saturate the color by 10%, you get  $68.2928, 12.7852, 6.6018$ , and if you desaturate by 10%, it is  $82.0626, -3.5477, 4.5867$ .

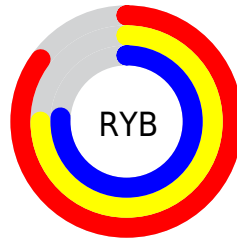
# Distribution



Red (85%)

Green (75%)

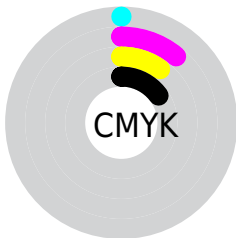
Blue (76%)



Red (85%)

Yellow (75%)

Blue (76%)

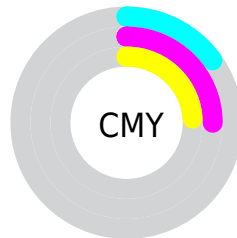


Cyan (0%)

Magenta (11%)

Yellow (10%)

Black (15%)



Cyan (15%)

Magenta (25%)


Yellow (24%)


# Brightness & Saturation Gradients

These gradients show how the HunterLab color 74.9922, 4.4826, 5.4691 changes by changing the brightness by 10 percent. The first figure shows a shift by +10% for each color and the second figure -10%.


Similar to the brightness gradients but the following saturation gradients show a change of the HunterLab color 74.9922, 4.4826, 5.4691 by changing the saturation by 10% instead.



 74.9922, 4.4826,  
5.4691

 74.9922, 4.4826,  
5.4691


202.6322, 0.8733,  
12.9725

 63.5579, 4.6562,  
4.7719


 99.6778, 3.9716,  
6.9546

 52.7707, 4.7724,  
4.1041


112.8700, 3.6464,  
7.7384

 42.6740, 4.8223,  
3.4682


126.5977, 3.2783,  
8.5487

 33.3187, 4.7965,  
2.8656

140.8409, 2.8699,  
9.3848

 24.7690, 4.6824,  
2.2977

155.5815, 2.4234,  
10.2459

 17.1096, 4.4616,  
1.7659

170.8032, 1.9407,

 10.4591, 4.1055,

11.1313

1.2705

186.4913, 1.4235,  
12.0403

0.0000, INF, NaN

0.0000, NaN, NaN

■ 74.9922, 4.4826,  
5.4691

■ 74.9922, 4.4826,  
5.4691

■ 68.2928, 12.7852,  
6.6018

■ 82.0626, -3.5477,  
4.5867

■ 62.0268, 21.3513,  
8.0201

■ 89.4458, -11.3152,  
3.9132

■ 56.2799, 30.1005,  
9.7587

■ 96.5034, -17.9399,  
2.7166

■ 51.1538, 38.8438,  
11.8300

■ 96.6122, -17.3299,  
1.1687

■ 46.7653, 47.2251,

14.2011

■ 43.2335, 54.6901,  
16.7643

■ 40.6531, 60.5533,  
19.3202

■ 39.0537, 64.2314,  
21.6050

■ 38.3120, 65.8166,  
23.1581

# Harmonies

## Analogous

The Analogous color harmony consists of three colors that are next to each other on the color wheel.



74.9939, 4.0885, 1.2945



74.9922, 4.4826, 5.4691



74.9939, 2.5590, 9.0643

# Triad

The Triadic color harmony groups three colors that are evenly spaced from another and form a triangle on the color wheel.



74.9939, 4.4805, 5.4703



74.9939, -9.3568, 9.9664



74.9939, -6.8598, -3.8582

# Complementary

The Complementary color scheme is a pair of colors which are on the opposite of each other on the color wheel.



74.9922, 4.4826, 5.4691



80.6993, -12.2546, 3.2594

# Split Complementary

Split-complementary colors differ from the complementary color scheme. The scheme consists of three colors, the original color and two neighbors of the complement color.



74.9939, -10.3517, -1.2672



74.9922, 4.4826, 5.4691



74.9939, -11.7702, 6.7667

# Square

The Square scheme is like the rectangle color scheme, but the four colors are evenly spaced on the color wheel.



74.9939, 4.4805, 5.4703



74.9939, -5.4733, 11.5596



74.9939, -12.1302, 2.6668



74.9939, -2.5263, -4.2547



# Rectangle

The Rectangle color scheme consists of four colors that form a rectangle on the color wheel.



74.9922, 4.4826, 5.4691



74.9939, 0.2500, 10.7069



74.9939, -12.1302, 2.6668



74.9939, -8.1682, -3.2082

# Sweetspot

The Sweet Spot groups the original color and five complimentary colors.



74.9939, 4.4805, 5.4703



97.3612, -2.4472, 5.7187



75.3498, 7.0262, -4.5665



44.7202, -0.7728, 2.6829

0.0000, NaN, NaN



46.2646, -2.4686, 2.5136



# Same Dimension

The Same Dimension uses a secret algorithm to generate beautiful new colors.



74.9939, 4.4805, 5.4703



88.8332, 7.3974, 6.8507



77.5157, -0.5379, 9.6093



35.2786, 1.4368, 2.4569



29.4898, 50.6900, 17.5998



7.3010, 12.6657, 3.4584



# Inverse Universe

The Inverse Universe completely reimagines the original color for something new.



74.9939, 4.4805, 5.4703



88.8332, 7.3974, 6.8507



78.0313, -7.3173, -1.4085



35.2786, 1.4368, 2.4569



29.4898, 50.6900, 17.5998

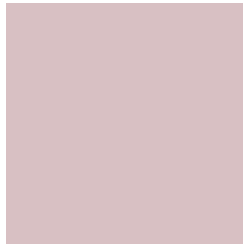


7.3010, 12.6657, 3.4584



# Previews

## White Background



This preview shows how the HunterLab color 74.9922, 4.4826, 5.4691 looks on a white background.

## Color Contrast Check

Large Text (above 18pt) WCAG AA × Fail

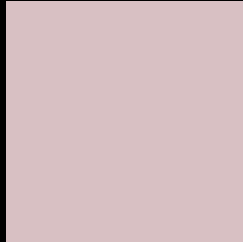
Any Text WCAG AA × Fail

Large Text (above 18pt) WCAG AAA × Fail

Any Text WCAG AAA × Fail



# Black Background



This preview shows how the HunterLab color 74.9922, 4.4826, 5.4691 looks on a black background.

## Color Contrast Check

Large Text (above 18pt) WCAG AA ✓ Pass

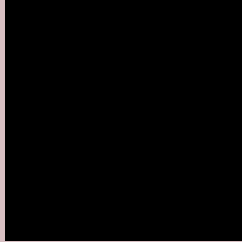
Any Text WCAG AA ✓ Pass

Large Text (above 18pt) WCAG AAA ✓ Pass

Any Text WCAG AAA ✓ Pass

If you want to check with other color combinations, try the [Color Contrast Checker](#).

## HunterLab 74.9922, 4.4826, 5.4691 Background



This preview shows how black text looks on a background with the HunterLab color 74.9922, 4.4826, 5.4691.



This preview shows how white text looks on a background with the HunterLab color 74.9922, 4.4826,

5.4691.

# Color Blindness Simulation

Color vision deficiency is a very complex topic, and I could not describe the different causes any better than Wikipedia does, so if you want to learn more, you should check out their [article about color blindness](#).

## Dichromacy



### Original Color

74.9922, 4.4826, 5.4691

### Protanopia

75.1181, -2.5524, 4.0740

### Deuteranopia

74.9047, 5.6896, 5.3886



## Tritanopia

74.8241, 7.5374, 0.4715

# Trichromacy



## Original Color

74.9922, 4.4826, 5.4691

## Protanomaly

74.9555, -0.0830, 4.4024

## Deuteranomaly

74.8020, 5.3455, 5.2632

## Tritanomaly

74.9869, 6.3340, 2.6263

# Monochromacy



## Original Color

74.9922, 4.4826, 5.4691

## Achromatopsia

75.9987, -4.0551, 4.1292

## Achromatomaly

75.5854, -0.9409, 4.6509

# CSS Examples

## Text

The CSS property to change the color of the text to HunterLab 74.9922, 4.4826, 5.4691 is called "color". The color property can be set on classes, ids or directly on the HTML element.

This example shows how text in the color `rgb(216, 192, 195)` looks like.

```
.text, #text, p{  
    color:rgb(216, 192, 195)  
}
```

If you want to add a text shadow in that color use the text-shadow property, you can generate a text shadow directly with our [CSS Text Shadow Generator](#).

Here you see how black text with a 4 pixel rgb(216, 192, 195) colored shadow looks like.

```
.shadow{ text-shadow: 4px 4px 2px rgb(216, 192, 195) }
```

## Border

The CSS property to change the border of an element to HunterLab 74.9922, 4.4826, 5.4691 is called "border". The border property can be set on classes, ids or directly on the HTML element.

This example shows the color as border, it can be applied via the CSS property "border" or "border-color".

```
.border, #border, table{ border:4px solid rgb(216, 192, 195) }
```



If only the border color should be changed use the property `border-color`.

```
.border{ border-color:rgb(216, 192, 195) }
```

If you want to add a box shadow in that color use:

Here you see how a box with a 4 pixel `rgb(216, 192, 195)` colored shadow looks like.

```
.boxshadow{ -moz-box-shadow:4px 4px 4px  
4px rgb(216, 192, 195); -webkit-box-  
shadow:4px 4px 4px 4px rgb(216, 192, 195);  
box-shadow:4px 4px 4px 4px rgb(216, 192,  
195) }
```

# Background

The CSS property to change the background color of an element to HunterLab 74.9922, 4.4826, 5.4691 is called "background". The background property can be set on classes, ids or directly on the HTML element.

```
.background, #background, body{  
background: rgb(216, 192, 195) }
```

If only the background color should be changed can be used:

```
.background{ background-color: rgb(216,  
192, 195) }
```

This example shows the color as background, it is applied via the CSS property "background".

To optimize and compress your CSS code, you can use our [online CSS compressor and optimizer](#) based on csstidy. If you want to create a linear or radial gradient as background or border, check our [CSS Gradient Generator](#).

Hey! You found this booklet interesting? Support Converting Colors with the new Membership Option!

The pro membership hides all ads, plus gives you double the colors in the color bucket, and more awesome pro features!

**[Learn more, Memberships starting at \\$2.50/m!](#)**

**Follow me  
on Twitter!**

@ConvertingColor