

Converting Colors

HunterLab(75.0519, 2.6718,
13.8335)

Have a look what the booklet for
HunterLab(75.0519, 2.6718,
13.8335) contains.

HunterLab(75.1599, 2.4679, 13.9549)	3
<i>Conversions</i>	4
<i>Details</i>	6
<i>Harmonies</i>	12
<i>Previews</i>	24
<i>Color Blindness Simulation</i>	28
<i>CSS Examples</i>	31

Color

**HunterLab(75.1599, 2.4679,
13.9549)**

Conversions

Conversions Part 1

Format	Color
Hex	DCC1B0
RGB	220, 193, 176
RGB Percent	86%, 76%, 69%
CMY	0.1373, 0.2431, 0.3098
CMYK	0.00, 0.12, 0.20, 0.14
HSL	23°, 39%, 78%
HSV	23°, 20%, 86%
XYZ	56.4216, 56.4901, 49.0042
YIQ	199.1350, 21.5490, 0.4370

Conversions

Conversions Part 2

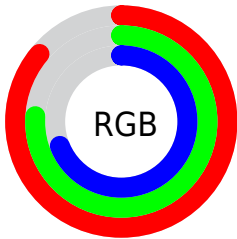
Format	Color
R _Y B	220, 204, 176
Decimal	14467504
CIE Lab	79.89, 6.89, 12.06
CIE LCh	80, 13.890, 60.281
Yxy	56.4927, 0.3485, 0.3489
Android (android.graphics.Color)	4292657584 (0xFFDCC1B0)
YUV	199.1350, -11.4056, 18.2986
Hunter-Lab	75.1599, 2.4679, 13.9549

Details

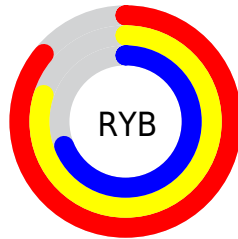
The HunterLab color $75.1599, 2.4679, 13.9549$ is a light color, and the websafe version is hex `FFCCCC`. A complement of this color would be $75.5698, -8.9990, -6.7157$, and the grayscale version is $75.6722, -4.0377, 4.1114$.

A 20% lighter version of the original color is $97.3846, -6.0429, 13.4222$, and $53.0901, 2.8155, 11.8359$ is the 20% darker color. If you saturate the color by 10%, you get $70.7056, 6.4568, 18.0451$, and if you desaturate by 10%, it is $79.7987, -1.1822, 9.4549$.

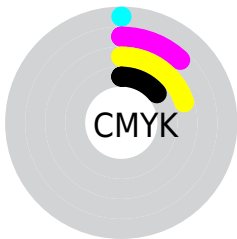
Distribution



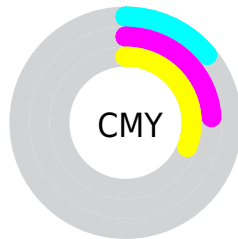
- Red (86%)
- Green (76%)
- Blue (69%)



- Red (86%)
- Yellow (80%)
- Blue (69%)



- Cyan (0%)
- Magenta (12%)
- Yellow (20%)
- Black (14%)



- Cyan (14%)
- Magenta (24%)
- Yellow (31%)

Brightness & Saturation Gradients

These gradients show how the HunterLab color 75.1599, 2.4679, 13.9549 changes by changing the brightness by 10 percent. The first figure shows a shift by +10% for each color and the second figure -10%.

Similar to the brightness gradients but the following saturation gradients show a change of the HunterLab color 75.1599, 2.4679, 13.9549 by changing the saturation by 10% instead.

■ 75.1599, 2.4679,
13.9549

■ 75.1599, 2.4679,
13.9549

202.8658, -1.8853,
25.2805

■ 63.7166, 2.7415,
12.7235

■ 99.8622, 1.7697,
16.4211

■ 52.9199, 2.9635,
11.4849

113.0622, 1.3567,
17.6598

■ 42.8130, 3.1255,
10.2328

126.7974, 0.9040,
18.9055

■ 33.4467, 3.2197,
8.9565

141.0478, 0.4140,
20.1598

■ 24.8850, 3.2351,
7.6388

155.7954, -0.1116,
21.4236

■ 17.2121, 3.1560,
6.2505

171.0238, -0.6710,

■ 10.5462, 2.9570,

22.6979

5.4193

186.7185, -1.2626,
23.9833

0.0000, INF, NaN

0.0000, NaN, NaN

■ 75.1599, 2.4679,
13.9549

■ 75.1599, 2.4679,
13.9549

■ 70.7056, 6.4568,
18.0451

■ 79.7987, -1.1822,
9.4549

■ 66.4512, 10.8159,
21.6586

■ 84.5991, -4.5141,
4.5962

■ 62.4215, 15.5588,
24.7241

■ 89.5474, -7.5590,
-0.5744

■ 58.6426, 20.6868,
27.1627

■ 94.3162, -12.0859,
-1.5677

■ 55.1428, 26.1775,

■ 96.9308, -16.1835,

28.8949

1.5759

■ 51.9518, 31.9726,
29.8526

■ 49.0985, 37.9650,
30.0022

■ 46.6006, 43.9549,
29.4846

■ 46.6005, 43.9551,
29.4845

Harmonies

Analogous

The Analogous color harmony consists of three colors that are next to each other on the color wheel.



75.1616, 7.4126, 10.0003



75.1599, 2.4679, 13.9549



75.1616, -4.0775, 15.3219

Triad

The Triadic color harmony groups three colors that are evenly spaced from another and form a triangle on the color wheel.



75.1616, 2.4655, 13.9560



75.1616, -16.4430, 4.0312



75.1616, 2.5785, -7.2543

Complementary

The Complementary color scheme is a pair of colors which are on the opposite of each other on the color wheel.



75.1599, 2.4679, 13.9549



75.5698, -8.9990, -6.7157

Split Complementary

Split-complementary colors differ from the complementary color scheme. The scheme consists of three colors, the original color and two neighbors of the complement color.



75.1616, -3.9514, -9.1942



75.1599, 2.4679, 13.9549



75.1616, -14.7972, -2.3403

Square

The Square scheme is like the rectangle color scheme, but the four colors are evenly spaced on the color wheel.



75.1616, 2.4655, 13.9560



75.1616, -14.8567, 9.9049



75.1616, -10.2821, -7.3234



75.1616, 7.4795, -2.2274

Rectangle

The Rectangle color scheme consists of four colors that form a rectangle on the color wheel.



75.1599, 2.4679, 13.9549



75.1616, -8.4189, 14.6822



75.1616, -10.2821, -7.3234



75.1616, 0.4938, -8.3077

Sweetspot

The Sweet Spot groups the original color and five complimentary colors.



75.1616, 2.4655, 13.9560



96.5452, -2.9957, 8.9550



71.1232, 15.6687, -3.0695



44.4941, -1.2645, 4.3164

0.0000, NaN, NaN



46.2646, -2.4686, 2.5136

Same Dimension

The Same Dimension uses a secret algorithm to generate beautiful new colors.



75.1616, 2.4655, 13.9560



86.6053, 4.8444, 18.5899



81.7825, -8.6292, 20.4647



37.2458, -0.6418, 4.2740



35.9801, 32.9327, 22.7473



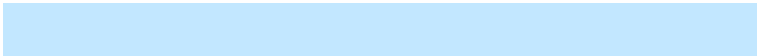
10.0135, 6.2615, 6.2799

Inverse Universe

The Inverse Universe completely reimagines the original color for something new.



75.5698, -8.9990, -6.7157



87.1838, -11.4639, -10.8172



68.9203, 2.0866, -15.7443



37.3370, -3.1877, -0.3161



36.6344, -1.8612, -41.7721



10.1718, -1.8268, -8.7702

Previews

White Background



This preview shows how the HunterLab color 75.1599, 2.4679, 13.9549 looks on a white background.

Color Contrast Check

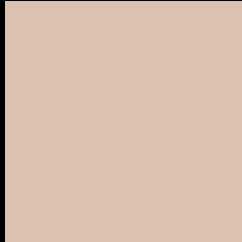
Large Text (above 18pt) WCAG AA × Fail

Any Text WCAG AA × Fail

Large Text (above 18pt) WCAG AAA × Fail

Any Text WCAG AAA × Fail

Black Background



This preview shows how the HunterLab color 75.1599, 2.4679, 13.9549 looks on a black background.

Color Contrast Check

Large Text (above 18pt) WCAG AA ✓ Pass

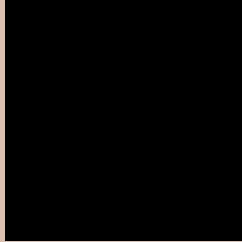
Any Text WCAG AA ✓ Pass

Large Text (above 18pt) WCAG AAA ✓ Pass

Any Text WCAG AAA ✓ Pass

If you want to check with other color combinations, try the [Color Contrast Checker](#).

HunterLab 75.1599, 2.4679, 13.9549 Background



This preview shows how black text looks on a background with the HunterLab color 75.1599, 2.4679, 13.9549.



This preview shows how white text looks on a background with the HunterLab color 75.1599, 2.4679,

13.9549.

Color Blindness Simulation

Color vision deficiency is a very complex topic, and I could not describe the different causes any better than Wikipedia does, so if you want to learn more, you should check out their [article about color blindness](#).

Dichromacy



Original Color

75.1599, 2.4679, 13.9549

Protanopia

75.3156, -4.5707, 13.1717

Deuteranopia

75.1024, 5.2784, 13.9439



Tritanopia

75.1284, 9.9600, 1.3848

Trichromacy



Original Color

75.1599, 2.4679, 13.9549

Protanomaly

75.1685, -2.0314, 13.4744

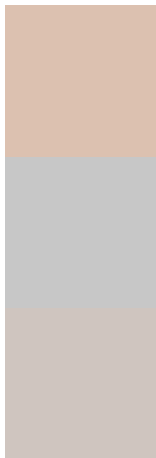
Deuteranomaly

75.1810, 4.0457, 14.0046

Tritanomaly

75.0010, 7.4414, 5.9981

Monochromacy



Original Color

75.1599, 2.4679, 13.9549

Achromatopsia

75.5728, -4.0324, 4.1060

Achromatomaly

75.4715, -1.7509, 7.7524

CSS Examples

Text

The CSS property to change the color of the text to HunterLab 75.1599, 2.4679, 13.9549 is called "color". The color property can be set on classes, ids or directly on the HTML element.

This example shows how text in the color `rgb(220, 193, 176)` looks like.

```
.text, #text, p{  
    color:rgb(220, 193, 176)  
}
```

If you want to add a text shadow in that color use the text-shadow property, you can generate a text shadow directly with our [CSS Text Shadow Generator](#).

Here you see how black text with a 4 pixel rgb(220, 193, 176) colored shadow looks like.

```
.shadow{ text-shadow: 4px 4px 2px rgb(220, 193, 176) }
```

Border

The CSS property to change the border of an element to HunterLab 75.1599, 2.4679, 13.9549 is called "border". The border property can be set on classes, ids or directly on the HTML element.

This example shows the color as border, it can be applied via the CSS property "border" or "border-color".

```
.border, #border, table{ border:4px solid rgb(220, 193, 176) }
```


If only the border color should be changed use the property `border-color`.

```
.border{ border-color:rgb(220, 193, 176) }
```

If you want to add a box shadow in that color use:

Here you see how a box with a 4 pixel `rgb(220, 193, 176)` colored shadow looks like.

```
.boxshadow{ -moz-box-shadow:4px 4px 4px  
4px rgb(220, 193, 176); -webkit-box-  
shadow:4px 4px 4px 4px rgb(220, 193, 176);  
box-shadow:4px 4px 4px 4px rgb(220, 193,  
176) }
```

Background

The CSS property to change the background color of an element to HunterLab 75.1599, 2.4679, 13.9549 is called "background". The background property can be set on classes, ids or directly on the HTML element.

```
.background, #background, body{  
background: rgb(220, 193, 176) }
```

If only the background color should be changed can be used:

```
.background{ background-color: rgb(220,  
193, 176) }
```

This example shows the color as background, it is applied via the CSS property "background".

To optimize and compress your CSS code, you can use our [online CSS compressor and optimizer](#) based on csstidy. If you want to create a linear or radial gradient as background or border, check our [CSS Gradient Generator](#).

Hey! You found this booklet interesting? Support Converting Colors with the new Membership Option!

The pro membership hides all ads, plus gives you double the colors in the color bucket, and more awesome pro features!

[Learn more, Memberships starting at \\$2.50/m!](#)

**Follow me
on Twitter!**

@ConvertingColor