

Converting Colors

HunterLab(75.1727, 3.5228,
5.9027)

Have a look what the booklet for
HunterLab(75.1727, 3.5228, 5.9027)
contains.

HunterLab(75.1545, 3.4614, 6.1055)	3
<i>Conversions</i>	4
<i>Details</i>	6
<i>Harmonies</i>	12
<i>Previews</i>	24
<i>Color Blindness Simulation</i>	28
<i>CSS Examples</i>	31

Color

**HunterLab(75.1545, 3.4614,
6.1055)**

Conversions

Conversions Part 1

Format	Color
Hex	D7C1C2
RGB	215, 193, 194
RGB Percent	84%, 76%, 76%
CMY	0.1569, 0.2431, 0.2392
CMYK	0.00, 0.10, 0.10, 0.16
HSL	357°, 22%, 80%
HSV	357°, 10%, 84%
XYZ	56.8319, 56.4820, 58.9456
YIQ	199.6920, 12.7910, 4.9750

Conversions

Conversions Part 2

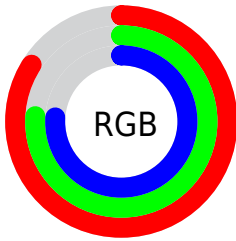
Format	Color
R _Y B	215, 193, 194
Decimal	14139842
CIE Lab	79.89, 7.92, 2.32
CIE LCh	80, 8.255, 16.336
Yxy	56.4845, 0.3299, 0.3279
Android (android.graphics.Color)	4292329922 (0xFFD7C1C2)
YUV	199.6920, -2.8062, 13.4251
Hunter-Lab	75.1545, 3.4614, 6.1055

Details

The HunterLab color **75.1545, 3.4614, 6.1055** is a light color, and the websafe version is hex **CCCCCC**. A complement of this color would be **80.4952, -11.2912, 2.5416**, and the grayscale version is **75.8766, -4.0486, 4.1225**.

A 20% lighter version of the original color is **97.9354, -3.0289, 5.5406**, and **52.7563, 3.9820, 4.6942** is the 20% darker color. If you saturate the color by 10%, you get **68.4103, 11.4543, 7.8811**, and if you desaturate by 10%, it is **82.2669, -4.2248, 4.5136**.

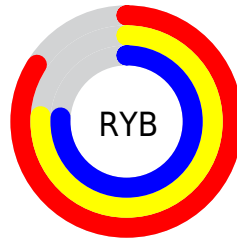
Distribution



Red (84%)

Green (76%)

Blue (76%)



Red (84%)

Yellow (76%)

Blue (76%)

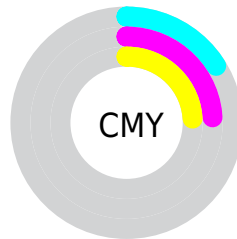


Cyan (0%)

Magenta (10%)

Yellow (10%)

Black (16%)



Cyan (16%)


Magenta (24%)


Yellow (24%)

Brightness & Saturation Gradients


These gradients show how the HunterLab color 75.1545, 3.4614, 6.1055 changes by changing the brightness by 10 percent. The first figure shows a shift by +10% for each color and the second figure -10%.


Similar to the brightness gradients but the following saturation gradients show a change of the HunterLab color 75.1545, 3.4614, 6.1055 by changing the saturation by 10% instead.


 75.1545, 3.4614,
6.1055

 75.1545, 3.4614,
6.1055


202.8583, -0.5250,
13.8680

 63.7115, 3.6858,
5.3726


 99.8562, 2.8555,
7.6569

 52.9150, 3.8557,
4.6669


113.0560, 2.4858,
8.4714

 42.8085, 3.9624,
3.9904


126.7910, 2.0749,
9.3112

 33.4426, 3.9975,
3.3438

141.0411, 1.6250,
10.1757

 24.8813, 3.9491,
2.7275

155.7884, 1.1384,
11.0642

 17.2088, 3.8001,
2.1411

171.0167, 0.6168,

 10.5434, 3.5235,

11.9761

1.5819

186.7111, 0.0619,
12.9109

0.0000, INF, NaN

0.0000, NaN, NaN

■ 75.1545, 3.4614,
6.1055

■ 75.1545, 3.4614,
6.1055

■ 68.4103, 11.4543,
7.8811

■ 82.2669, -4.2248,
4.5136

■ 62.0964, 19.7587,
9.8558

■ 89.6897, -11.6234,
3.0786

■ 56.2984, 28.3134,
12.0369

■ 96.5335, -17.6134,
1.0680

■ 51.1186, 36.9542,
14.4017

■ 46.6751, 45.3516,

16.8761

■ 43.0899, 52.9709,
19.3131

■ 40.4626, 59.1227,
21.4936

■ 38.8283, 63.1823,
23.1778

■ 38.0376, 65.1966,
24.1441

Harmonies

Analogous

The Analogous color harmony consists of three colors that are next to each other on the color wheel.



75.1562, 3.5551, 2.3537



75.1545, 3.4614, 6.1055



75.1562, 1.3341, 9.1612

Triad

The Triadic color harmony groups three colors that are evenly spaced from another and form a triangle on the color wheel.



75.1562, 3.4593, 6.1067



75.1562, -9.4619, 8.9381



75.1562, -5.8105, -3.3198

Complementary

The Complementary color scheme is a pair of colors which are on the opposite of each other on the color wheel.



75.1545, 3.4614, 6.1055



80.4952, -11.2912, 2.5416

Split Complementary

Split-complementary colors differ from the complementary color scheme. The scheme consists of three colors, the original color and two neighbors of the complement color.



75.1562, -9.2169, -1.3591



75.1545, 3.4614, 6.1055



75.1562, -11.2953, 5.7877

Square

The Square scheme is like the rectangle color scheme, but the four colors are evenly spaced on the color wheel.



75.1562, 3.4593, 6.1067



75.1562, -6.1512, 10.7368



75.1562, -11.2065, 2.0177



75.1562, -1.8530, -3.2233

Rectangle

The Rectangle color scheme consists of four colors that form a rectangle on the color wheel.



75.1545, 3.4614, 6.1055



75.1562, -0.9229, 10.4482



75.1562, -11.2065, 2.0177



75.1562, -7.0563, -2.8752

Sweetspot

The Sweet Spot groups the original color and five complimentary colors.



75.1562, 3.4593, 6.1067



97.3418, -2.5530, 5.9957



75.7164, 6.6811, -3.5699



44.7089, -0.8345, 2.8448

0.0000, NaN, NaN



46.2646, -2.4686, 2.5136

Same Dimension

The Same Dimension uses a secret algorithm to generate beautiful new colors.



75.1562, 3.4593, 6.1067



89.5912, 5.9959, 7.7962



78.0794, -1.7937, 9.7674



35.2560, 1.3149, 2.7801



29.4246, 50.4481, 18.5668



7.2491, 12.4736, 4.2241

Inverse Universe

The Inverse Universe completely reimagines the original color for something new.



75.1562, 3.4593, 6.1067



89.5912, 5.9959, 7.7962



77.4315, -6.1442, -1.6226



35.2560, 1.3149, 2.7801



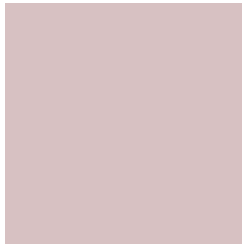
29.4246, 50.4481, 18.5668



7.2491, 12.4736, 4.2241

Previews

White Background



This preview shows how the HunterLab color 75.1545, 3.4614, 6.1055 looks on a white background.

Color Contrast Check

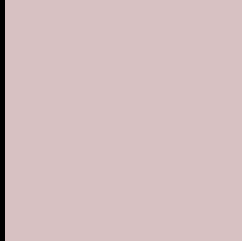
Large Text (above 18pt) WCAG AA × Fail

Any Text WCAG AA × Fail

Large Text (above 18pt) WCAG AAA × Fail

Any Text WCAG AAA × Fail

Black Background



This preview shows how the HunterLab color 75.1545, 3.4614, 6.1055 looks on a black background.

Color Contrast Check

Large Text (above 18pt) WCAG AA ✓ Pass

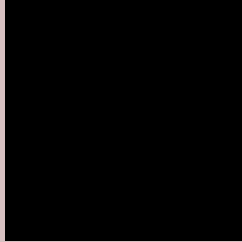
Any Text WCAG AA ✓ Pass

Large Text (above 18pt) WCAG AAA ✓ Pass

Any Text WCAG AAA ✓ Pass

If you want to check with other color combinations, try the [Color Contrast Checker](#).

HunterLab 75.1545, 3.4614, 6.1055 Background



This preview shows how black text looks on a background with the HunterLab color 75.1545, 3.4614, 6.1055.



This preview shows how white text looks on a background with the HunterLab color 75.1545, 3.4614,

Color Blindness Simulation

Color vision deficiency is a very complex topic, and I could not describe the different causes any better than Wikipedia does, so if you want to learn more, you should check out their [article about color blindness](#).

Dichromacy



Original Color

75.1545, 3.4614, 6.1055

Protanopia

75.1496, -2.5654, 5.0588

Deuteranopia

75.2691, 5.3528, 6.2705



Tritanopia

75.1462, 7.1839, 0.3591

Trichromacy



Original Color

75.1545, 3.4614, 6.1055

Protanomaly

75.2897, -0.5963, 5.7247

Deuteranomaly

75.1663, 5.0078, 6.1461

Tritanomaly

75.2080, 5.6388, 2.3910

Monochromacy



Original Color

75.1545, 3.4614, 6.1055

Achromatopsia

75.9987, -4.0551, 4.1292

Achromatomaly

75.4910, -1.2657, 4.5346

CSS Examples

Text

The CSS property to change the color of the text to HunterLab 75.1545, 3.4614, 6.1055 is called "color". The color property can be set on classes, ids or directly on the HTML element.

This example shows how text in the color `rgb(215, 193, 194)` looks like.

```
.text, #text, p{  
    color:rgb(215, 193, 194)  
}
```

If you want to add a text shadow in that color use the text-shadow property, you can generate a text shadow directly with our [CSS Text Shadow Generator](#).

Here you see how black text with a 4 pixel rgb(215, 193, 194) colored shadow looks like.

```
.shadow{ text-shadow: 4px 4px 2px rgb(215, 193, 194) }
```

Border

The CSS property to change the border of an element to HunterLab 75.1545, 3.4614, 6.1055 is called "border".

The border property can be set on classes, ids or directly on the HTML element.

This example shows the color as border, it can be applied via the CSS property "border" or "border-color".

```
.border, #border, table{ border:4px solid rgb(215, 193, 194) }
```


If only the border color should be changed use the property `border-color`.

```
.border{ border-color:rgb(215, 193, 194) }
```

If you want to add a box shadow in that color use:

Here you see how a box with a 4 pixel `rgb(215, 193, 194)` colored shadow looks like.

```
.boxshadow{ -moz-box-shadow:4px 4px 4px  
4px rgb(215, 193, 194); -webkit-box-  
shadow:4px 4px 4px 4px rgb(215, 193, 194);  
box-shadow:4px 4px 4px 4px rgb(215, 193,  
194) }
```

Background

The CSS property to change the background color of an element to HunterLab 75.1545, 3.4614, 6.1055 is called "background". The background property can be set on classes, ids or directly on the HTML element.

```
.background, #background, body{  
background: rgb(215, 193, 194) }
```

If only the background color should be changed can be used:

```
.background{ background-color: rgb(215,  
193, 194) }
```

This example shows the color as background, it is applied via the CSS property "background".

To optimize and compress your CSS code, you can use our [online CSS compressor and optimizer](#) based on csstidy. If you want to create a linear or radial gradient as background or border, check our [CSS Gradient Generator](#).

Hey! You found this booklet interesting? Support Converting Colors with the new Membership Option!

The pro membership hides all ads, plus gives you double the colors in the color bucket, and more awesome pro features!

[Learn more, Memberships starting at \\$2.50/m!](#)

**Follow me
on Twitter!**

@ConvertingColor