

Converting Colors

HunterLab(75.1745, 4.4296,
4.0823)

Have a look what the booklet for
HunterLab(75.1745, 4.4296, 4.0823)
contains.

HunterLab(75.2756, 4.1122, 4.3760)	3
<i>Conversions</i>	4
<i>Details</i>	6
<i>Harmonies</i>	12
<i>Previews</i>	24
<i>Color Blindness Simulation</i>	28
<i>CSS Examples</i>	31

Color

**HunterLab(75.2756, 4.1122,
4.3760)**

Conversions

Conversions Part 1

Format	Color
Hex	D7C1C6
RGB	215, 193, 198
RGB Percent	84%, 76%, 78%
CMY	0.1569, 0.2431, 0.2235
CMYK	0.00, 0.10, 0.08, 0.16
HSL	346°, 22%, 80%
HSV	346°, 10%, 84%
XYZ	57.2873, 56.6642, 61.3440
YIQ	200.1480, 11.5070, 6.2190

Conversions

Conversions Part 2

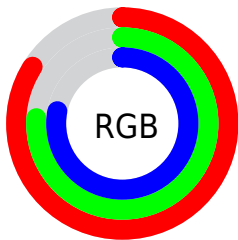
Format	Color
R _Y B	215, 193, 198
Decimal	14139846
CIE Lab	79.99, 8.60, 0.32
CIE LCh	80, 8.606, 2.119
Yxy	56.6667, 0.3268, 0.3233
Android (android.graphics.Color)	4292329926 (0xFFD7C1C6)
YUV	200.1480, -1.0590, 13.0252
Hunter-Lab	75.2756, 4.1122, 4.3760

Details

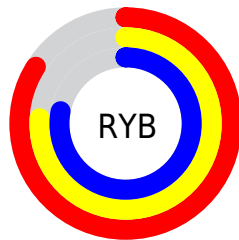
The HunterLab color $75.2756, 4.1122, 4.3760$ is a light color, and the websafe version is hex $CCCCCC$. A complement of this color would be $80.3696, -11.9902, 4.3307$, and the grayscale version is $76.0641, -4.0586, 4.1327$.

A 20% lighter version of the original color is $98.0976, -2.1450, 3.2290$, and $52.8701, 4.5900, 3.0691$ is the 20% darker color. If you saturate the color by 10%, you get $68.6412, 12.6663, 4.5786$, and if you desaturate by 10%, it is $82.2697, -4.2095, 4.4735$.

Distribution



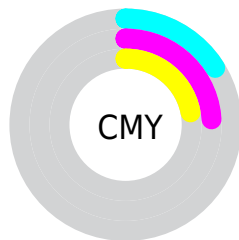
- Red (84%)
- Green (76%)
- Blue (78%)



- Red (84%)
- Yellow (76%)
- Blue (78%)



- Cyan (0%)
- Magenta (10%)
- Yellow (8%)
- Black (16%)




- Cyan (16%)
- Magenta (24%)
- Yellow (22%)

Brightness & Saturation Gradients


These gradients show how the HunterLab color 75.2756, 4.1122, 4.3760 changes by changing the brightness by 10 percent. The first figure shows a shift by +10% for each color and the second figure -10%.


Similar to the brightness gradients but the following saturation gradients show a change of the HunterLab color 75.2756, 4.1122, 4.3760 by changing the saturation by 10% instead.


 75.2756, 4.1122,
4.3760

 75.2756, 4.1122,
4.3760


203.0269, 0.3612,
11.4410

 63.8261, 4.3051,
3.7389


 99.9893, 3.5654,
5.7503

 53.0228, 4.4417,
3.1349


113.1947, 3.2235,
6.4821

 42.9089, 4.5132,
2.5674


126.9351, 2.8393,
7.2425

 33.5350, 4.5106,
2.0387

141.1905, 2.4153,
8.0306

 24.9651, 4.4218,
1.5521

155.9428, 1.9537,
8.8452

 17.2829, 4.2289,
1.1115

171.1759, 1.4565,

 10.6063, 3.9039,

9.6857

0.7221

186.8751, 0.9251,
10.5512

0.0000, INF, NaN

0.0000, NaN, NaN

■ 75.2756, 4.1122,
4.3760

■ 75.2756, 4.1122,
4.3760

■ 68.6412, 12.6663,
4.5786

■ 82.2697, -4.2095,
4.4735

■ 62.4257, 21.4359,
5.1373

■ 89.5678, -12.3010,
4.8163

■ 56.7102, 30.3339,
6.1181

■ 96.2991, -18.9294,
4.4053

■ 51.5915, 39.1691,
7.5799

■ 96.5335, -17.6134,
1.0679

■ 47.1804, 47.5923,

9.5534

■ 43.5914, 55.0662,
12.0060

■ 40.9189, 60.9253,
14.8045

■ 39.1997, 64.5889,
17.7052

■ 38.2983, 66.1624,
20.2870

Harmonies

Analogous

The Analogous color harmony consists of three colors that are next to each other on the color wheel.



75.2773, 3.1541, 0.4654



75.2756, 4.1122, 4.3760



75.2773, 2.8487, 8.0178

Triad

The Triadic color harmony groups three colors that are evenly spaced from another and form a triangle on the color wheel.



75.2773, 4.1101, 4.3773



75.2773, -8.2111, 10.2398



75.2773, -7.7114, -2.9163

Complementary

The Complementary color scheme is a pair of colors which are on the opposite of each other on the color wheel.



75.2756, 4.1122, 4.3760



80.3696, -11.9902, 4.3307

Split Complementary

Split-complementary colors differ from the complementary color scheme. The scheme consists of three colors, the original color and two neighbors of the complement color.



75.2773, -10.6522, -0.0456



75.2756, 4.1122, 4.3760



75.2773, -10.9363, 7.5573

Square

The Square scheme is like the rectangle color scheme, but the four colors are evenly spaced on the color wheel.



75.2773, 4.1101, 4.3773



75.2773, -4.3150, 11.2867



75.2773, -11.8203, 3.8167



75.2773, -3.7258, -3.8790

Rectangle

The Rectangle color scheme consists of four colors that form a rectangle on the color wheel.



75.2756, 4.1122, 4.3760



75.2773, 0.9356, 9.8390



75.2773, -11.8203, 3.8167



75.2773, -8.8519, -2.1351

Sweetspot

The Sweet Spot groups the original color and five complimentary colors.



75.2773, 4.1101, 4.3773



97.3863, -2.3108, 5.3615



75.3199, 5.3544, -4.1025



44.7349, -0.6930, 2.4738

0.0000, NaN, NaN



46.2646, -2.4686, 2.5136

Same Dimension

The Same Dimension uses a secret algorithm to generate beautiful new colors.



75.2773, 4.1101, 4.3773



89.7641, 6.9215, 5.3263



76.8668, 0.2739, 8.4520



35.3080, 1.5952, 2.0369



29.6417, 51.2522, 15.3563



7.3673, 12.9096, 2.4901

Inverse Universe

The Inverse Universe completely reimagines the original color for something new.



75.2773, 4.1101, 4.3773



89.7641, 6.9215, 5.3263



78.6841, -8.1775, -0.1026



35.3080, 1.5952, 2.0369



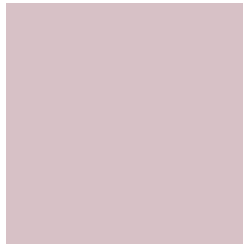
29.6417, 51.2522, 15.3563



7.3673, 12.9096, 2.4901

Previews

White Background



This preview shows how the HunterLab color 75.2756, 4.1122, 4.3760 looks on a white background.

Color Contrast Check

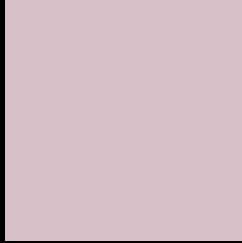
Large Text (above 18pt) WCAG AA × Fail

Any Text WCAG AA × Fail

Large Text (above 18pt) WCAG AAA × Fail

Any Text WCAG AAA × Fail

Black Background



This preview shows how the HunterLab color 75.2756, 4.1122, 4.3760 looks on a black background.

Color Contrast Check

Large Text (above 18pt) WCAG AA ✓ Pass

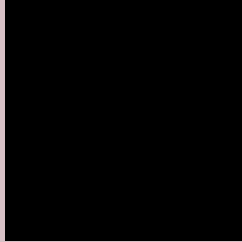
Any Text WCAG AA ✓ Pass

Large Text (above 18pt) WCAG AAA ✓ Pass

Any Text WCAG AAA ✓ Pass

If you want to check with other color combinations, try the [Color Contrast Checker](#).

HunterLab 75.2756, 4.1122, 4.3760 Background



This preview shows how black text looks on a background with the HunterLab color 75.2756, 4.1122, 4.3760.



This preview shows how white text looks on a background with the HunterLab color 75.2756, 4.1122,

4.3760.

Color Blindness Simulation

Color vision deficiency is a very complex topic, and I could not describe the different causes any better than Wikipedia does, so if you want to learn more, you should check out their [article about color blindness](#).

Dichromacy



Original Color

75.2756, 4.1122, 4.3760

Protanopia

75.2111, -2.0449, 2.7479

Deuteranopia

75.1852, 5.3137, 4.2908



Tritanopia

75.3679, 6.4932, 0.1165

Trichromacy



Original Color

75.2756, 4.1122, 4.3760

Protanomaly

75.3471, -0.0942, 3.4283

Deuteranomaly

75.0836, 4.9724, 4.1651

Tritanomaly

75.2714, 5.9777, 1.4888

Monochromacy



Original Color

75.2756, 4.1122, 4.3760

Achromatopsia

75.9987, -4.0551, 4.1292

Achromatomaly

75.5216, -1.0989, 4.0971

CSS Examples

Text

The CSS property to change the color of the text to HunterLab 75.2756, 4.1122, 4.3760 is called "color". The color property can be set on classes, ids or directly on the HTML element.

This example shows how text in the color `rgb(215, 193, 198)` looks like.

```
.text, #text, p{  
    color:rgb(215, 193, 198)  
}
```

If you want to add a text shadow in that color use the text-shadow property, you can generate a text shadow directly with our [CSS Text Shadow Generator](#).

Here you see how black text with a 4 pixel rgb(215, 193, 198) colored shadow looks like.

```
.shadow{ text-shadow: 4px 4px 2px rgb(215, 193, 198) }
```

Border

The CSS property to change the border of an element to HunterLab 75.2756, 4.1122, 4.3760 is called "border".

The border property can be set on classes, ids or directly on the HTML element.

This example shows the color as border, it can be applied via the CSS property "border" or "border-color".

```
.border, #border, table{ border:4px solid rgb(215, 193, 198) }
```


If only the border color should be changed use the property `border-color`.

```
.border{ border-color:rgb(215, 193, 198) }
```

If you want to add a box shadow in that color use:

Here you see how a box with a 4 pixel `rgb(215, 193, 198)` colored shadow looks like.

```
.boxshadow{ -moz-box-shadow:4px 4px 4px  
4px rgb(215, 193, 198); -webkit-box-  
shadow:4px 4px 4px 4px rgb(215, 193, 198);  
box-shadow:4px 4px 4px 4px rgb(215, 193,  
198) }
```

Background

The CSS property to change the background color of an element to HunterLab 75.2756, 4.1122, 4.3760 is called "background". The background property can be set on classes, ids or directly on the HTML element.

```
.background, #background, body{  
background: rgb(215, 193, 198) }
```

If only the background color should be changed can be used:

```
.background{ background-color: rgb(215,  
193, 198) }
```

This example shows the color as background, it is applied via the CSS property "background".

To optimize and compress your CSS code, you can use our [online CSS compressor and optimizer](#) based on csstidy. If you want to create a linear or radial gradient as background or border, check our [CSS Gradient Generator](#).

Hey! You found this booklet interesting? Support Converting Colors with the new Membership Option!

The pro membership hides all ads, plus gives you double the colors in the color bucket, and more awesome pro features!

[Learn more, Memberships starting at \\$2.50/m!](#)

**Follow me
on Twitter!**

@ConvertingColor