

Converting Colors

HunterLab(75.2870, 3.2533,
3.5800)

Have a look what the booklet for
HunterLab(75.2870, 3.2533, 3.5800)
contains.

HunterLab(75.4320, 3.2503, 3.5875)	3
<i>Conversions</i>	4
<i>Details</i>	6
<i>Harmonies</i>	12
<i>Previews</i>	24
<i>Color Blindness Simulation</i>	28
<i>CSS Examples</i>	31

Color

**HunterLab(75.4320, 3.2503,
3.5875)**

Conversions

Conversions Part 1

Format	Color
Hex	D5C2C8
RGB	213, 194, 200
RGB Percent	84%, 76%, 78%
CMY	0.1647, 0.2392, 0.2157
CMYK	0.00, 0.09, 0.06, 0.16
HSL	341°, 18%, 80%
HSV	341°, 9%, 84%
XYZ	57.1577, 56.8999, 62.6139
YIQ	200.3650, 9.3980, 5.8940

Conversions

Conversions Part 2

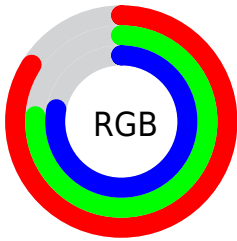
Format	Color
R _Y B	213, 194, 200
Decimal	14009032
CIE Lab	80.12, 7.71, -0.58
CIE LCh	80, 7.731, 355.662
Yxy	56.9024, 0.3235, 0.3221
Android (android.graphics.Color)	4292199112 (0xFFD5C2C8)
YUV	200.3650, -0.1799, 11.0809
Hunter-Lab	75.4320, 3.2503, 3.5875

Details

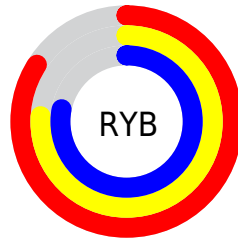
The HunterLab color $75.4320, 3.2503, 3.5875$ is a light color, and the websafe version is hex `CCCCCC`. A complement of this color would be $79.7272, -11.2188, 5.0295$, and the grayscale version is $76.1536, -4.0634, 4.1376$.

A 20% lighter version of the original color is $98.4130, -2.6782, 3.5973$, and $53.0100, 3.7624, 2.3146$ is the 20% darker color. If you saturate the color by 10%, you get $68.8776, 11.9701, 2.9388$, and if you desaturate by 10%, it is $82.3331, -5.2630, 4.5489$.

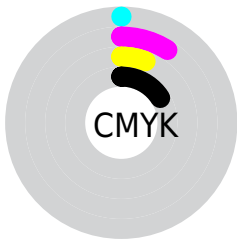
Distribution



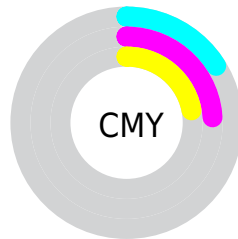
- Red (84%)
- Green (76%)
- Blue (78%)



- Red (84%)
- Yellow (76%)
- Blue (78%)



- Cyan (0%)
- Magenta (9%)
- Yellow (6%)
- Black (16%)



- Cyan (16%)
- Magenta (24%)
- Yellow (22%)

Brightness & Saturation Gradients

These gradients show how the HunterLab color 75.4320, 3.2503, 3.5875 changes by changing the brightness by 10 percent. The first figure shows a shift by +10% for each color and the second figure -10%.

Similar to the brightness gradients but the following saturation gradients show a change of the HunterLab color 75.4320, 3.2503, 3.5875 by changing the saturation by 10% instead.

■ 75.4320, 3.2503,
3.5875

■ 75.4320, 3.2503,
3.5875

203.2445, -0.8194,
10.3446

■ 63.9741, 3.4862,
2.9924

■ 100.1612, 2.6234,
4.8838

■ 53.1620, 3.6682,
2.4330

113.3739, 2.2438,
5.5792

■ 43.0386, 3.7878,
1.9130

127.1212, 1.8234,
6.3046

■ 33.6545, 3.8367,
1.4356

141.3833, 1.3644,
7.0589

■ 25.0734, 3.8035,
1.0051

156.1422, 0.8689,
7.8409

■ 17.3787, 3.6714,
0.6270

171.3816, 0.3388,

■ 10.6878, 3.4140,


8.6497


0.3095


187.0868, -0.2245,
9.4846


 1.1747, 28.5338,
-1.9995


0.0000, NaN, NaN


 75.4320, 3.2503,
3.5875


 75.4320, 3.2503,
3.5875


 68.8776, 11.9701,
2.9388


 82.3331, -5.2630,
4.5489


 62.7253, 20.8762,
2.6699

 89.5277, -13.5681,
5.7622

 57.0517, 29.8812,
2.8659

 96.0113, -20.2368,
6.0864

 51.9479, 38.7999,
3.6176

 96.3775, -18.1766,
0.8679

■ 47.5185, 47.2983,
5.0052

■ 43.8733, 54.8635,
7.0643

■ 41.1060, 60.8505,
9.7396

■ 39.2606, 64.6708,
12.8462

■ 38.2409, 66.2701,
16.0417

Harmonies

Analogous

The Analogous color harmony consists of three colors that are next to each other on the color wheel.



75.4337, 1.9782, 0.1599



75.4320, 3.2503, 3.5875



75.4337, 2.5376, 6.9981

Triad

The Triadic color harmony groups three colors that are evenly spaced from another and form a triangle on the color wheel.



75.4337, 3.2483, 3.5888



75.4337, -7.1065, 9.9941



75.4337, -8.0276, -1.7408

Complementary

The Complementary color scheme is a pair of colors which are on the opposite of each other on the color wheel.



75.4320, 3.2503, 3.5875



79.7272, -11.2188, 5.0295

Split Complementary

Split-complementary colors differ from the complementary color scheme. The scheme consists of three colors, the original color and two neighbors of the complement color.



75.4337, -10.3784, 1.0947



75.4320, 3.2503, 3.5875



75.4337, -9.8539, 7.8499

Square

The Square scheme is like the rectangle color scheme, but the four colors are evenly spaced on the color wheel.



75.4337, 3.2483, 3.5888



75.4337, -3.4864, 10.5903



75.4337, -11.0404, 4.6197



75.4337, -4.5701, -3.0104

Rectangle

The Rectangle color scheme consists of four colors that form a rectangle on the color wheel.



75.4320, 3.2503, 3.5875



75.4337, 1.0434, 8.8195



75.4337, -11.0404, 4.6197



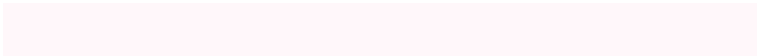
75.4337, -8.9708, -0.9327

Sweetspot

The Sweet Spot groups the original color and five complimentary colors.



75.4337, 3.2483, 3.5888



97.4080, -2.1924, 5.0513



75.2684, 3.5311, -3.1460



44.7476, -0.6237, 2.2921

0.0000, NaN, NaN



46.2646, -2.4686, 2.5136

Same Dimension

The Same Dimension uses a secret algorithm to generate beautiful new colors.



75.4337, 3.2483, 3.5888



90.6728, 6.3071, 4.1893



76.2863, 0.4713, 7.3455



35.3338, 1.7337, 1.6694



29.8442, 51.9994, 12.3836



7.4300, 13.1393, 1.5820

Inverse Universe

The Inverse Universe completely reimagines the original color for something new.



75.4337, 3.2483, 3.5888



90.6728, 6.3071, 4.1893



78.8226, -8.4333, 1.0706



35.3338, 1.7337, 1.6694



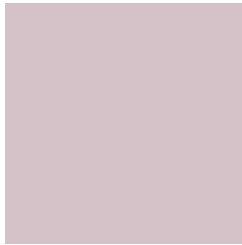
29.8442, 51.9994, 12.3836



7.4300, 13.1393, 1.5820

Previews

White Background



This preview shows how the HunterLab color 75.4320, 3.2503, 3.5875 looks on a white background.

Color Contrast Check

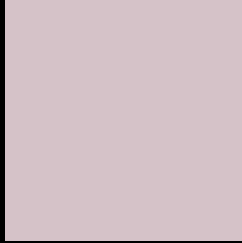
Large Text (above 18pt) WCAG AA × Fail

Any Text WCAG AA × Fail

Large Text (above 18pt) WCAG AAA × Fail

Any Text WCAG AAA × Fail

Black Background



This preview shows how the HunterLab color 75.4320, 3.2503, 3.5875 looks on a black background.

Color Contrast Check

Large Text (above 18pt) WCAG AA ✓ Pass

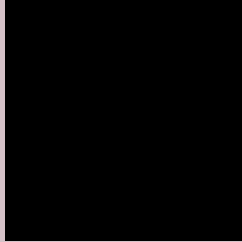
Any Text WCAG AA ✓ Pass

Large Text (above 18pt) WCAG AAA ✓ Pass

Any Text WCAG AAA ✓ Pass

If you want to check with other color combinations, try the [Color Contrast Checker](#).

HunterLab 75.4320, 3.2503, 3.5875 Background



This preview shows how black text looks on a background with the HunterLab color 75.4320, 3.2503, 3.5875.



This preview shows how white text looks on a background with the HunterLab color 75.4320, 3.2503,

3.5875.

Color Blindness Simulation

Color vision deficiency is a very complex topic, and I could not describe the different causes any better than Wikipedia does, so if you want to learn more, you should check out their [article about color blindness](#).

Dichromacy



Original Color

75.4320, 3.2503, 3.5875

Protanopia

75.5447, -2.3836, 2.6543

Deuteranopia

75.2470, 5.6442, 3.4099



Tritanopia

75.4918, 5.4714, -0.2539

Trichromacy



Original Color

75.4320, 3.2503, 3.5875

Protanomaly

75.5835, -0.7624, 3.2146

Deuteranomaly

75.4380, 4.7822, 3.6216

Tritanomaly

75.3949, 4.9522, 1.1245

Monochromacy



Original Color

75.4320, 3.2503, 3.5875

Achromatopsia

75.9987, -4.0551, 4.1292

Achromatomaly

75.8534, -1.4425, 4.0037

CSS Examples

Text

The CSS property to change the color of the text to HunterLab 75.4320, 3.2503, 3.5875 is called "color". The color property can be set on classes, ids or directly on the HTML element.

This example shows how text in the color `rgb(213, 194, 200)` looks like.

```
.text, #text, p{  
    color:rgb(213, 194, 200)  
}
```

If you want to add a text shadow in that color use the text-shadow property, you can generate a text shadow directly with our [CSS Text Shadow Generator](#).

Here you see how black text with a 4 pixel rgb(213, 194, 200) colored shadow looks like.

```
.shadow{ text-shadow: 4px 4px 2px rgb(213, 194, 200) }
```

Border

The CSS property to change the border of an element to HunterLab 75.4320, 3.2503, 3.5875 is called "border". The border property can be set on classes, ids or directly on the HTML element.

This example shows the color as border, it can be applied via the CSS property "border" or "border-color".

```
.border, #border, table{ border:4px solid rgb(213, 194, 200) }
```


If only the border color should be changed use the property `border-color`.

```
.border{ border-color:rgb(213, 194, 200) }
```

If you want to add a box shadow in that color use:

Here you see how a box with a 4 pixel `rgb(213, 194, 200)` colored shadow looks like.

```
.boxshadow{ -moz-box-shadow:4px 4px 4px  
4px rgb(213, 194, 200); -webkit-box-  
shadow:4px 4px 4px 4px rgb(213, 194, 200);  
box-shadow:4px 4px 4px 4px rgb(213, 194,  
200) }
```

Background

The CSS property to change the background color of an element to HunterLab 75.4320, 3.2503, 3.5875 is called "background". The background property can be set on classes, ids or directly on the HTML element.

```
.background, #background, body{  
background: rgb(213, 194, 200) }
```

If only the background color should be changed can be used:

```
.background{ background-color: rgb(213,  
194, 200) }
```

This example shows the color as background, it is applied via the CSS property "background".

To optimize and compress your CSS code, you can use our [online CSS compressor and optimizer](#) based on csstidy. If you want to create a linear or radial gradient as background or border, check our [CSS Gradient Generator](#).

Hey! You found this booklet interesting? Support Converting Colors with the new Membership Option!

The pro membership hides all ads, plus gives you double the colors in the color bucket, and more awesome pro features!

[Learn more, Memberships starting at \\$2.50/m!](#)

**Follow me
on Twitter!**

@ConvertingColor