

Converting Colors

HunterLab(75.3045, 2.0658,
8.4270)

Have a look what the booklet for
HunterLab(75.3045, 2.0658, 8.4270)
contains.

HunterLab(75.3026, 2.1536, 8.5322)	3
<i>Conversions</i>	4
<i>Details</i>	6
<i>Harmonies</i>	12
<i>Previews</i>	24
<i>Color Blindness Simulation</i>	28
<i>CSS Examples</i>	31

Color

**HunterLab(75.3026, 2.1536,
8.5322)**

Conversions

Conversions Part 1

Format	Color
Hex	D7C2BD
RGB	215, 194, 189
RGB Percent	84%, 76%, 74%
CMY	0.1569, 0.2392, 0.2588
CMYK	0.00, 0.10, 0.12, 0.16
HSL	12°, 25%, 79%
HSV	12°, 12%, 84%
XYZ	56.5015, 56.7048, 56.1113
YIQ	199.7090, 14.1210, 2.8970

Conversions

Conversions Part 2

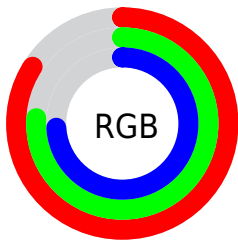
Format	Color
R _Y B	215, 195, 189
Decimal	14140093
CIE Lab	80.01, 6.56, 5.19
CIE LCh	80, 8.369, 38.369
Yxy	56.7073, 0.3337, 0.3349
Android (android.graphics.Color)	4292330173 (0xFFD7C2BD)
YUV	199.7090, -5.2795, 13.4102
Hunter-Lab	75.3026, 2.1536, 8.5322

Details

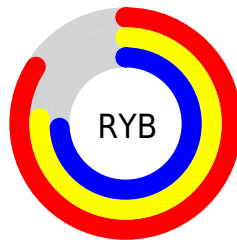
The HunterLab color $75.3026, 2.1536, 8.5322$ is a light color, and the websafe version is hex `CCCCCC`. A complement of this color would be $78.6239, -9.7774, -0.2049$, and the grayscale version is $75.8937, -4.0495, 4.1234$.

A 20% lighter version of the original color is $98.0937, -4.4219, 8.1538$, and $52.9219, 2.9043, 6.5658$ is the 20% darker color. If you saturate the color by 10%, you get $69.6845, 7.9170, 11.7648$, and if you desaturate by 10%, it is $81.1768, -3.2960, 5.1901$.

Distribution



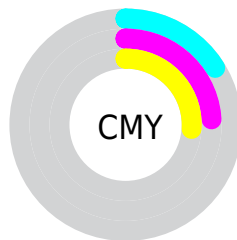
- Red (84%)
- Green (76%)
- Blue (74%)



- Red (84%)
- Yellow (76%)
- Blue (74%)



- Cyan (0%)
- Magenta (10%)
- Yellow (12%)
- Black (16%)



- Cyan (16%)
- Magenta (24%)
- Yellow (26%)

Brightness & Saturation Gradients

These gradients show how the HunterLab color 75.3026, 2.1536, 8.5322 changes by changing the brightness by 10 percent. The first figure shows a shift by +10% for each color and the second figure -10%.

Similar to the brightness gradients but the following saturation gradients show a change of the HunterLab color 75.3026, 2.1536, 8.5322 by changing the saturation by 10% instead.

■ 75.3026, 2.1536,
8.5322

■ 75.3026, 2.1536,
8.5322

203.0645, -2.3184,
17.3207

■ 63.8516, 2.4435,
7.6573

■ 100.0190, 1.4255,
10.3454

■ 53.0468, 2.6826,
6.8003

113.2256, 0.9985,
11.2818

■ 42.9313, 2.8628,
5.9611

126.9673, 0.5323,
12.2384

■ 33.5557, 2.9764,
5.1374

141.2238, 0.0292,
13.2152

■ 24.9838, 3.0130,
4.3252

155.9773, -0.5091,
14.2121

■ 17.2995, 2.9572,
3.5166


171.2115, -1.0807,

■ 10.6204, 2.7845,


15.2287


2.7226

186.9117, -1.6842,
16.2650


 0.4034, 70.8590,
0.2824


0.0000, NaN, NaN


 75.3026, 2.1536,
8.5322


 75.3026, 2.1536,
8.5322


 69.6845, 7.9170,
11.7648


 81.1768, -3.2960,
5.1901


 64.3549, 14.0238,
14.8463

 87.2712, -8.4562,
1.7610

 59.3607, 20.4760,
17.7238

 93.5621, -13.3626,
-1.7359

 54.7555, 27.2422,
20.3221

 96.5335, -17.6134,
1.0680

■ 50.6011, 34.2315,
22.5423

■ 46.9654, 41.2650,
24.2653

■ 43.9159, 48.0536,
25.3688

■ 41.5094, 54.2030,
25.7693

■ 40.0742, 58.2890,
25.7140

Harmonies

Analogous

The Analogous color harmony consists of three colors that are next to each other on the color wheel.



75.3043, 3.8003, 5.1642



75.3026, 2.1536, 8.5322



75.3043, -1.1436, 10.6356

Triad

The Triadic color harmony groups three colors that are evenly spaced from another and form a triangle on the color wheel.



75.3043, 2.1514, 8.5334



75.3043, -11.0922, 6.7665



75.3043, -2.8907, -3.5663

Complementary

The Complementary color scheme is a pair of colors which are on the opposite of each other on the color wheel.



75.3026, 2.1536, 8.5322



78.6239, -9.7774, -0.2049

Split Complementary

Split-complementary colors differ from the complementary color scheme. The scheme consists of three colors, the original color and two neighbors of the complement color.



75.3043, -6.8579, -3.0817



75.3026, 2.1536, 8.5322



75.3043, -11.5377, 3.0180

Square

The Square scheme is like the rectangle color scheme, but the four colors are evenly spaced on the color wheel.



75.3043, 2.1514, 8.5334



75.3043, -8.7729, 9.6535



75.3043, -10.0029, -0.6226



75.3043, 0.8495, -1.9137

Rectangle

The Rectangle color scheme consists of four colors that form a rectangle on the color wheel.



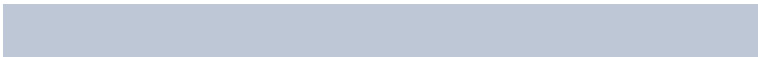
75.3026, 2.1536, 8.5322



75.3043, -3.8013, 11.1027



75.3043, -10.0029, -0.6226



75.3043, -4.2426, -3.6496

Sweetspot

The Sweet Spot groups the original color and five complimentary colors.



75.3043, 2.1514, 8.5334



97.0655, -2.7408, 7.0942



74.5036, 8.3020, -2.5900



44.6539, -1.0393, 3.4257

0.0000, NaN, NaN



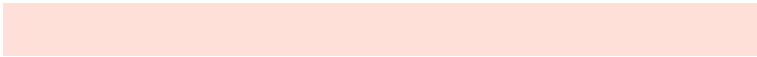
46.2646, -2.4686, 2.5136

Same Dimension

The Same Dimension uses a secret algorithm to generate beautiful new colors.



75.3043, 2.1514, 8.5334



89.2345, 4.7025, 11.5646



79.1420, -4.3751, 12.6221



35.7824, 0.3096, 3.5615



31.1805, 44.4863, 19.9921



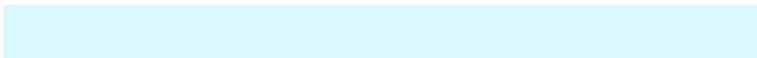
8.3803, 8.7974, 5.3179

Inverse Universe

The Inverse Universe completely reimagines the original color for something new.



78.6239, -9.7774, -0.2049



94.2582, -13.3635, -1.6623



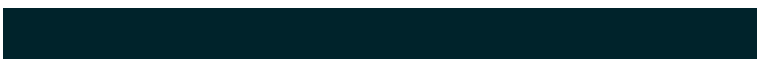
74.6756, -3.3441, -5.0884



36.9901, -4.0283, 0.3827



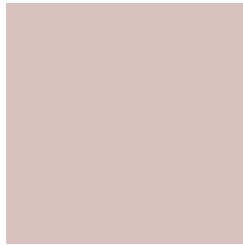
45.9375, -16.5857, -21.6141



11.7451, -4.6914, -4.5529

Previews

White Background



This preview shows how the HunterLab color 75.3026, 2.1536, 8.5322 looks on a white background.

Color Contrast Check

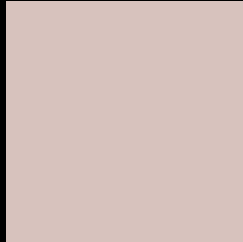
Large Text (above 18pt) WCAG AA × Fail

Any Text WCAG AA × Fail

Large Text (above 18pt) WCAG AAA × Fail

Any Text WCAG AAA × Fail

Black Background



This preview shows how the HunterLab color 75.3026, 2.1536, 8.5322 looks on a black background.

Color Contrast Check

Large Text (above 18pt) WCAG AA ✓ Pass

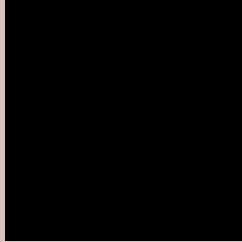
Any Text WCAG AA ✓ Pass

Large Text (above 18pt) WCAG AAA ✓ Pass

Any Text WCAG AAA ✓ Pass

If you want to check with other color combinations, try the [Color Contrast Checker](#).

HunterLab 75.3026, 2.1536, 8.5322 Background



This preview shows how black text looks on a background with the HunterLab color 75.3026, 2.1536, 8.5322.



This preview shows how white text looks on a background with the HunterLab color 75.3026, 2.1536,

8.5322.

Color Blindness Simulation

Color vision deficiency is a very complex topic, and I could not describe the different causes any better than Wikipedia does, so if you want to learn more, you should check out their [article about color blindness](#).

Dichromacy



Original Color

75.3026, 2.1536, 8.5322

Protanopia

75.4898, -3.2391, 7.7470

Deuteranopia

75.3296, 5.2625, 8.6169



Tritanopia

75.1462, 7.1839, 0.3591

Trichromacy



Original Color

75.3026, 2.1536, 8.5322

Protanomaly

75.5381, -1.5793, 8.2820

Deuteranomaly

75.4149, 4.0468, 8.6911

Tritanomaly

75.1454, 5.3037, 3.2831

Monochromacy



Original Color

75.3026, 2.1536, 8.5322

Achromatopsia

75.9987, -4.0551, 4.1292

Achromatomaly

75.7316, -2.1061, 5.7422

CSS Examples

Text

The CSS property to change the color of the text to HunterLab 75.3026, 2.1536, 8.5322 is called "color". The color property can be set on classes, ids or directly on the HTML element.

This example shows how text in the color `rgb(215, 194, 189)` looks like.

```
.text, #text, p{  
  color:rgb(215, 194, 189)  
}
```

If you want to add a text shadow in that color use the text-shadow property, you can generate a text shadow directly with our [CSS Text Shadow Generator](#).

Here you see how black text with a 4 pixel rgb(215, 194, 189) colored shadow looks like.

```
.shadow{ text-shadow: 4px 4px 2px rgb(215, 194, 189) }
```

Border

The CSS property to change the border of an element to HunterLab 75.3026, 2.1536, 8.5322 is called "border". The border property can be set on classes, ids or directly on the HTML element.

This example shows the color as border, it can be applied via the CSS property "border" or "border-color".

```
.border, #border, table{ border:4px solid rgb(215, 194, 189) }
```


If only the border color should be changed use the property `border-color`.

```
.border{ border-color:rgb(215, 194, 189) }
```

If you want to add a box shadow in that color use:

Here you see how a box with a 4 pixel `rgb(215, 194, 189)` colored shadow looks like.

```
.boxshadow{ -moz-box-shadow:4px 4px 4px  
4px rgb(215, 194, 189); -webkit-box-  
shadow:4px 4px 4px 4px rgb(215, 194, 189);  
box-shadow:4px 4px 4px 4px rgb(215, 194,  
189) }
```

Background

The CSS property to change the background color of an element to HunterLab 75.3026, 2.1536, 8.5322 is called "background". The background property can be set on classes, ids or directly on the HTML element.

```
.background, #background, body{  
background: rgb(215, 194, 189) }
```

If only the background color should be changed can be used:

```
.background{ background-color: rgb(215,  
194, 189) }
```

This example shows the color as background, it is applied via the CSS property "background".

To optimize and compress your CSS code, you can use our [online CSS compressor and optimizer](#) based on csstidy. If you want to create a linear or radial gradient as background or border, check our [CSS Gradient Generator](#).

Hey! You found this booklet interesting? Support Converting Colors with the new Membership Option!

The pro membership hides all ads, plus gives you double the colors in the color bucket, and more awesome pro features!

[Learn more, Memberships starting at \\$2.50/m!](#)

**Follow me
on Twitter!**

@ConvertingColor