

Converting Colors

HunterLab(75.3178, 2.2944,
9.7276)

Have a look what the booklet for
HunterLab(75.3178, 2.2944, 9.7276)
contains.

HunterLab(75.3178, 2.0340, 9.8773)	3
<i>Conversions</i>	4
<i>Details</i>	6
<i>Harmonies</i>	12
<i>Previews</i>	24
<i>Color Blindness Simulation</i>	28
<i>CSS Examples</i>	31

Color

**HunterLab(75.3178, 2.0340,
9.8773)**

Conversions

Conversions Part 1

Format	Color
Hex	D8C2BA
RGB	216, 194, 186
RGB Percent	85%, 76%, 73%
CMY	0.1529, 0.2392, 0.2706
CMYK	0.00, 0.10, 0.14, 0.15
HSL	16°, 28%, 79%
HSV	16°, 14%, 85%
XYZ	56.4736, 56.7277, 54.4274
YIQ	199.6660, 15.6800, 2.1760

Conversions

Conversions Part 2

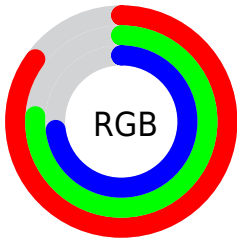
Format	Color
R _Y B	216, 197, 186
Decimal	14205626
CIE Lab	80.03, 6.44, 6.84
CIE LCh	80, 9.390, 46.729
Yxy	56.7302, 0.3369, 0.3384
Android (android.graphics.Color)	4292395706 (0xFFD8C2BA)
YUV	199.6660, -6.7373, 14.3249
Hunter-Lab	75.3178, 2.0340, 9.8773

Details

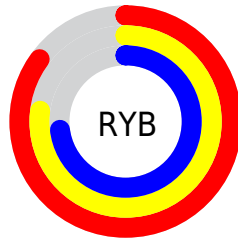
The HunterLab color $75.3178, 2.0340, 9.8773$ is a light color, and the websafe version is hex $CCCCCC$. A complement of this color would be $77.7865, -9.4568, -1.7521$, and the grayscale version is $75.8809, -4.0488, 4.1228$.

A 20% lighter version of the original color is $98.0010, -4.9291, 9.4794$, and $52.9402, 2.8070, 7.8188$ is the 20% darker color. If you saturate the color by 10%, you get $70.1439, 7.0573, 13.4977$, and if you desaturate by 10%, it is $80.7149, -2.6725, 6.0434$.

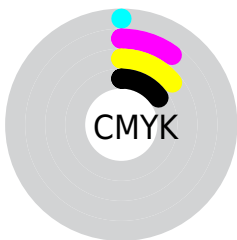
Distribution



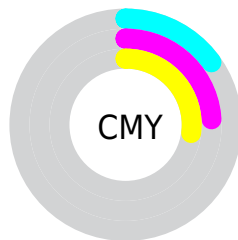
- Red (85%)
- Green (76%)
- Blue (73%)



- Red (85%)
- Yellow (77%)
- Blue (73%)



- Cyan (0%)
- Magenta (10%)
- Yellow (14%)
- Black (15%)



- Cyan (15%)
- Magenta (24%)
- Yellow (27%)

Brightness & Saturation Gradients

These gradients show how the HunterLab color 75.3178, 2.0340, 9.8773 changes by changing the brightness by 10 percent. The first figure shows a shift by +10% for each color and the second figure -10%.

Similar to the brightness gradients but the following saturation gradients show a change of the HunterLab color 75.3178, 2.0340, 9.8773 by changing the saturation by 10% instead.

■ 75.3178, 2.0340,
9.8773

■ 75.3178, 2.0340,
9.8773

203.0856, -2.4828,
19.2615

■ 63.8660, 2.3299,
8.9193

■ 100.0357, 1.2946,
11.8431

■ 53.0604, 2.5753,
7.9736

113.2431, 0.8623,
12.8504

■ 42.9439, 2.7623,
7.0387

126.9854, 0.3910,
13.8748

■ 33.5673, 2.8832,
6.1105

141.2425, -0.1170,
14.9168

■ 24.9943, 2.9277,
5.1821

155.9966, -0.6600,
15.9765

■ 17.3088, 2.8805,
4.2407

171.2315, -1.2362,

■ 10.6283, 2.7175,

17.0538

3.3635

186.9323, -1.8442,
18.1488

0.5530, 50.6897,
0.3871

0.0000, NaN, NaN

75.3178, 2.0340,
9.8773

75.3178, 2.0340,
9.8773

70.1439, 7.0573,
13.4977

80.7149, -2.6725,
6.0434

65.2178, 12.4289,
16.8516

86.3053, -7.0860,
2.0305

60.5763, 18.1592,
19.8763

92.0699, -11.2398,
-2.1311

56.2601, 24.2369,
22.4920

96.6121, -17.3299,
1.1686

■ 52.3159, 30.6111,
24.6039

■ 48.7943, 37.1709,
26.1087

■ 45.7471, 43.7258,
26.9138

■ 43.2200, 49.9949,
26.9755

■ 41.9380, 53.5037,
26.7786

Harmonies

Analogous

The Analogous color harmony consists of three colors that are next to each other on the color wheel.



75.3195, 4.4885, 6.4426



75.3178, 2.0340, 9.8773



75.3195, -2.0159, 11.7159

Triad

The Triadic color harmony groups three colors that are evenly spaced from another and form a triangle on the color wheel.



75.3195, 2.0318, 9.8785



75.3195, -12.3023, 5.9745



75.3195, -1.5031, -4.2615

Complementary

The Complementary color scheme is a pair of colors which are on the opposite of each other on the color wheel.



75.3178, 2.0340, 9.8773



77.7865, -9.4568, -1.7521

Split Complementary

Split-complementary colors differ from the complementary color scheme. The scheme consists of three colors, the original color and two neighbors of the complement color.



75.3195, -6.0090, -4.4053



75.3178, 2.0340, 9.8773



75.3195, -12.1723, 1.6793

Square

The Square scheme is like the rectangle color scheme, but the four colors are evenly spaced on the color wheel.



75.3195, 2.0318, 9.8785



75.3195, -10.2514, 9.5532



75.3195, -9.8922, -2.1763



75.3195, 2.4148, -1.7945

Rectangle

The Rectangle color scheme consists of four colors that form a rectangle on the color wheel.



75.3178, 2.0340, 9.8773



75.3195, -5.0392, 11.8621



75.3195, -9.8922, -2.1763



75.3195, -3.0011, -4.5880

Sweetspot

The Sweet Spot groups the original color and five complimentary colors.



75.3195, 2.0318, 9.8785



97.3043, -3.1431, 7.3636



73.6693, 9.8282, -2.4607



44.7848, -1.2605, 3.5729

0.0000, NaN, NaN



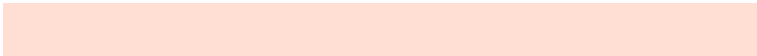
46.2646, -2.4686, 2.5136

Same Dimension

The Same Dimension uses a secret algorithm to generate beautiful new colors.



75.3195, 2.0318, 9.8785



88.8181, 4.3915, 13.3810



79.8409, -5.6180, 14.6015



35.9922, -0.0510, 3.7923



32.5002, 40.4624, 20.7349



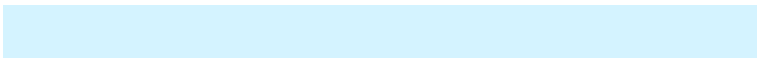
8.7962, 7.6852, 5.5547

Inverse Universe

The Inverse Universe completely reimagines the original color for something new.



77.7865, -9.4568, -1.7521



92.4805, -12.6775, -3.8897



73.1695, -1.8854, -7.5892



36.7712, -3.6756, 0.1209



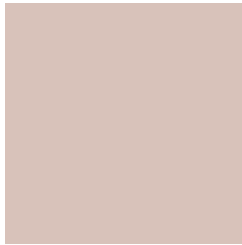
42.0351, -11.1222, -28.5306



10.9473, -3.6153, -5.8789

Previews

White Background



This preview shows how the HunterLab color 75.3178, 2.0340, 9.8773 looks on a white background.

Color Contrast Check

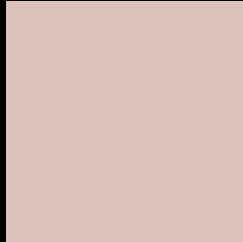
Large Text (above 18pt) WCAG AA × Fail

Any Text WCAG AA × Fail

Large Text (above 18pt) WCAG AAA × Fail

Any Text WCAG AAA × Fail

Black Background



This preview shows how the HunterLab color 75.3178, 2.0340, 9.8773 looks on a black background.

Color Contrast Check

Large Text (above 18pt) WCAG AA ✓ Pass

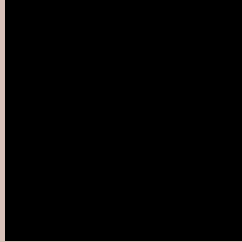
Any Text WCAG AA ✓ Pass

Large Text (above 18pt) WCAG AAA ✓ Pass

Any Text WCAG AAA ✓ Pass

If you want to check with other color combinations, try the [Color Contrast Checker](#).

HunterLab 75.3178, 2.0340, 9.8773 Background



This preview shows how black text looks on a background with the HunterLab color 75.3178, 2.0340, 9.8773.



This preview shows how white text looks on a background with the HunterLab color 75.3178, 2.0340,

9.8773.

Color Blindness Simulation

Color vision deficiency is a very complex topic, and I could not describe the different causes any better than Wikipedia does, so if you want to learn more, you should check out their [article about color blindness](#).

Dichromacy



Original Color

75.3178, 2.0340, 9.8773

Protanopia

75.4971, -3.3869, 9.0982

Deuteranopia

75.3485, 5.1548, 9.9658



Tritanopia

75.3511, 7.8652, 0.6226

Trichromacy



Original Color

75.3178, 2.0340, 9.8773

Protanomaly

75.5484, -1.7157, 9.6265

Deuteranomaly

75.4326, 3.9354, 10.0370

Tritanomaly

75.3181, 5.8205, 3.9783

Monochromacy



Original Color

75.3178, 2.0340, 9.8773

Achromatopsia

75.9987, -4.0551, 4.1292

Achromatomaly

75.7959, -1.9444, 6.2845

CSS Examples

Text

The CSS property to change the color of the text to HunterLab 75.3178, 2.0340, 9.8773 is called "color". The color property can be set on classes, ids or directly on the HTML element.

This example shows how text in the color `rgb(216, 194, 186)` looks like.

```
.text, #text, p{  
    color:rgb(216, 194, 186)  
}
```

If you want to add a text shadow in that color use the text-shadow property, you can generate a text shadow directly with our [CSS Text Shadow Generator](#).

Here you see how black text with a 4 pixel rgb(216, 194, 186) colored shadow looks like.

```
.shadow{ text-shadow: 4px 4px 2px rgb(216, 194, 186) }
```

Border

The CSS property to change the border of an element to HunterLab 75.3178, 2.0340, 9.8773 is called "border".

The border property can be set on classes, ids or directly on the HTML element.

This example shows the color as border, it can be applied via the CSS property "border" or "border-color".

```
.border, #border, table{ border:4px solid rgb(216, 194, 186) }
```


If only the border color should be changed use the property `border-color`.

```
.border{ border-color:rgb(216, 194, 186) }
```

If you want to add a box shadow in that color use:

Here you see how a box with a 4 pixel `rgb(216, 194, 186)` colored shadow looks like.

```
.boxshadow{ -moz-box-shadow:4px 4px 4px 4px rgb(216, 194, 186); -webkit-box-shadow:4px 4px 4px 4px rgb(216, 194, 186); box-shadow:4px 4px 4px 4px rgb(216, 194, 186) }
```

Background

The CSS property to change the background color of an element to HunterLab 75.3178, 2.0340, 9.8773 is called "background". The background property can be set on classes, ids or directly on the HTML element.

```
.background, #background, body{  
background: rgb(216, 194, 186) }
```

If only the background color should be changed can be used:

```
.background{ background-color: rgb(216,  
194, 186) }
```

This example shows the color as background, it is applied via the CSS property "background".

To optimize and compress your CSS code, you can use our [online CSS compressor and optimizer](#) based on csstidy. If you want to create a linear or radial gradient as background or border, check our [CSS Gradient Generator](#).

Hey! You found this booklet interesting? Support Converting Colors with the new Membership Option!

The pro membership hides all ads, plus gives you double the colors in the color bucket, and more awesome pro features!

[Learn more, Memberships starting at \\$2.50/m!](#)

**Follow me
on Twitter!**

@ConvertingColor