

Converting Colors

HunterLab(75.3335, 0.5328,
17.6556)

Have a look what the booklet for
HunterLab(75.3335, 0.5328,
17.6556) contains.

HunterLab(75.2258, 0.7175, 17.5518)	3
<i>Conversions</i>	4
<i>Details</i>	6
<i>Harmonies</i>	12
<i>Previews</i>	24
<i>Color Blindness Simulation</i>	28
<i>CSS Examples</i>	31

Color

**HunterLab(75.2258, 0.7175,
17.5518)**

Conversions

Conversions Part 1

Format	Color
Hex	DCC2A7
RGB	220, 194, 167
RGB Percent	86%, 76%, 65%
CMY	0.1373, 0.2392, 0.3451
CMYK	0.00, 0.12, 0.24, 0.14
HSL	31°, 43%, 76%
HSV	31°, 24%, 86%
XYZ	55.7820, 56.5892, 44.5420
YIQ	198.6960, 24.1630, -2.8850

Conversions

Conversions Part 2

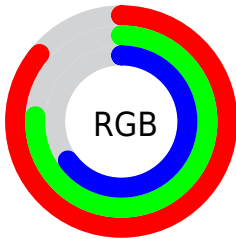
Format	Color
R _Y B	218, 220, 167
Decimal	14467751
CIE Lab	79.95, 5.05, 16.96
CIE LCh	80, 17.697, 73.418
Yxy	56.5918, 0.3555, 0.3606
Android (android.graphics.Color)	4292657831 (0xFFDCC2A7)
YUV	198.6960, -15.6261, 18.6836
Hunter-Lab	75.2258, 0.7175, 17.5518

Details

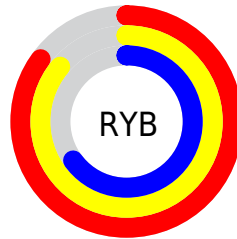
The HunterLab color $75.2258, 0.7175, 17.5518$ is a light color, and the websafe version is hex `CCCC99`. A complement of this color would be $71.7784, -6.4333, -11.8129$, and the grayscale version is $75.5019, -4.0286, 4.1022$.

A 20% lighter version of the original color is $97.4193, -8.1241, 17.8280$, and $52.8077, 1.4966, 14.3553$ is the 20% darker color. If you saturate the color by 10%, you get $71.5652, 3.4734, 21.9652$, and if you desaturate by 10%, it is $79.0285, -1.6874, 12.5473$.

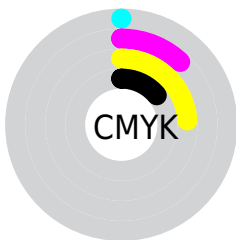
Distribution



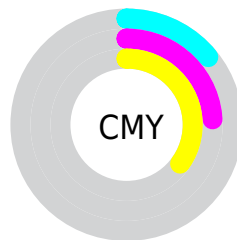
- Red (86%)
- Green (76%)
- Blue (65%)



- Red (85%)
- Yellow (86%)
- Blue (65%)



- Cyan (0%)
- Magenta (12%)
- Yellow (24%)
- Black (14%)



- Cyan (14%)
- Magenta (24%)
- Yellow (35%)

Brightness & Saturation Gradients

These gradients show how the HunterLab color 75.2258, 0.7175, 17.5518 changes by changing the brightness by 10 percent. The first figure shows a shift by +10% for each color and the second figure -10%.

Similar to the brightness gradients but the following saturation gradients show a change of the HunterLab color 75.2258, 0.7175, 17.5518 by changing the saturation by 10% instead.

■ 75.2258, 0.7175,
17.5518

■ 75.2258, 0.7175,
17.5518

202.9576, -4.2899,
30.7611

■ 63.7790, 1.0794,
16.0526

■ 99.9346, -0.1455,
20.5063

■ 52.9785, 1.3948,
14.5263

■ 113.1377, -0.6358,
21.9702

■ 42.8676, 1.6561,
12.9618

126.8759, -1.1628,
23.4308

■ 33.4971, 1.8566,
11.3417

141.1291, -1.7247,
24.8907

■ 24.9306, 1.9873,
9.6388

155.8794, -2.3198,
26.3521

■ 17.2525, 2.0348,
7.8085

171.1105, -2.9465,

■ 10.5805, 1.9779,

27.8167

7.3305

186.8077, -3.6036,
29.2860

0.0000, INF, NaN

0.0000, NaN, NaN

■ 75.2258, 0.7175,
17.5518

■ 75.2258, 0.7175,
17.5518

■ 71.5652, 3.4734,
21.9652

■ 79.0285, -1.6874,
12.5473

■ 68.0534, 6.6083,
25.7236

■ 82.9573, -3.7574,
7.0055

■ 64.7048, 10.1355,
28.7663

■ 87.0041, -5.5194,
0.9795

■ 61.5329, 14.0618,
31.0347

■ 91.1599, -6.9978,
-5.4827

■ 58.5514, 18.3806,

■ 94.6282, -12.5804,

32.4809

-1.1880

■ 55.7734, 23.0649,
33.0806

■ 96.9307, -16.1835,
1.5759

■ 53.2099, 28.0591,
32.8546

■ 51.7927, 31.0901,
32.4587

Harmonies

Analogous

The Analogous color harmony consists of three colors that are next to each other on the color wheel.



75.2275, 8.2561, 14.0385



75.2258, 0.7175, 17.5518



75.2275, -7.7822, 17.7320

Triad

The Triadic color harmony groups three colors that are evenly spaced from another and form a triangle on the color wheel.



75.2275, 0.7151, 17.5529



75.2275, -19.3003, 0.3877



75.2275, 7.5771, -8.1281

Complementary

The Complementary color scheme is a pair of colors which are on the opposite of each other on the color wheel.



75.2258, 0.7175, 17.5518



71.7784, -6.4333, -11.8129

Split Complementary

Split-complementary colors differ from the complementary color scheme. The scheme consists of three colors, the original color and two neighbors of the complement color.



75.2275, -0.1783, -12.6972



75.2258, 0.7175, 17.5518



75.2275, -15.5523, -7.4240

Square

The Square scheme is like the rectangle color scheme, but the four colors are evenly spaced on the color wheel.



75.2275, 0.7151, 17.5529



75.2275, -19.0851, 8.4083



75.2275, -8.6368, -12.4260



75.2275, 12.3370, -0.4902

Rectangle

The Rectangle color scheme consists of four colors that form a rectangle on the color wheel.



75.2258, 0.7175, 17.5518



75.2275, -12.8301, 15.9765



75.2275, -8.6368, -12.4260



75.2275, 5.2195, -10.1099

Sweetspot

The Sweet Spot groups the original color and five complimentary colors.



75.2275, 0.7151, 17.5529



96.6663, -3.7546, 10.2873



68.3567, 18.8164, -1.5643



44.5908, -1.6700, 4.9468

0.0000, NaN, NaN



46.2646, -2.4686, 2.5136

Same Dimension

The Same Dimension uses a secret algorithm to generate beautiful new colors.



75.2275, 0.7151, 17.5529



86.6718, 2.4703, 23.5265



83.1819, -12.3429, 24.9812



37.6070, -1.2521, 4.6652



39.9588, 23.1698, 25.0281



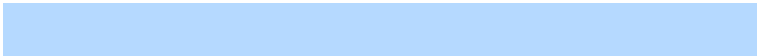
10.9854, 4.1145, 6.8412

Inverse Universe

The Inverse Universe completely reimagines the original color for something new.



71.7784, -6.4333, -11.8129



81.7564, -7.6789, -18.3663



64.0477, 6.8485, -23.0949



36.9682, -2.5839, -0.7649



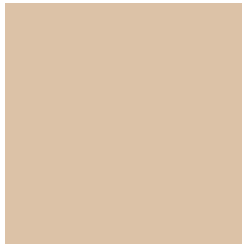
30.8827, 8.5750, -57.1117



8.8887, 0.2687, -11.6903

Previews

White Background



This preview shows how the HunterLab color 75.2258, 0.7175, 17.5518 looks on a white background.

Color Contrast Check

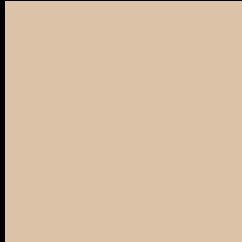
Large Text (above 18pt) WCAG AA × Fail

Any Text WCAG AA × Fail

Large Text (above 18pt) WCAG AAA × Fail

Any Text WCAG AAA × Fail

Black Background



This preview shows how the HunterLab color 75.2258, 0.7175, 17.5518 looks on a black background.

Color Contrast Check

Large Text (above 18pt) WCAG AA ✓ Pass

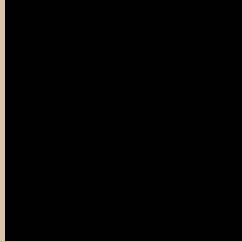
Any Text WCAG AA ✓ Pass

Large Text (above 18pt) WCAG AAA ✓ Pass

Any Text WCAG AAA ✓ Pass

If you want to check with other color combinations, try the [Color Contrast Checker](#).

HunterLab 75.2258, 0.7175, 17.5518 Background



This preview shows how black text looks on a background with the HunterLab color 75.2258, 0.7175, 17.5518.



This preview shows how white text looks on a background with the HunterLab color 75.2258, 0.7175,

Color Blindness Simulation

Color vision deficiency is a very complex topic, and I could not describe the different causes any better than Wikipedia does, so if you want to learn more, you should check out their [article about color blindness](#).

Dichromacy



Original Color

75.2258, 0.7175, 17.5518

Protanopia

75.3711, -4.8411, 16.8311

Deuteranopia

75.2215, 5.2688, 17.2437



Tritanopia

75.2344, 10.3086, 1.5196

Trichromacy



Original Color

75.2258, 0.7175, 17.5518

Protanomaly

75.4359, -3.1123, 17.3121

Deuteranomaly

75.1891, 3.6640, 17.1830

Tritanomaly

75.3068, 6.7957, 7.7159

Monochromacy



Original Color

75.2258, 0.7175, 17.5518

Achromatopsia

75.5728, -4.0324, 4.1060

Achromatomaly

75.3563, -2.3789, 9.4024

CSS Examples

Text

The CSS property to change the color of the text to HunterLab 75.2258, 0.7175, 17.5518 is called "color". The color property can be set on classes, ids or directly on the HTML element.

This example shows how text in the color `rgb(220, 194, 167)` looks like.

```
.text, #text, p{  
    color:rgb(220, 194, 167)  
}
```

If you want to add a text shadow in that color use the text-shadow property, you can generate a text shadow directly with our [CSS Text Shadow Generator](#).

Here you see how black text with a 4 pixel rgb(220, 194, 167) colored shadow looks like.

```
.shadow{ text-shadow: 4px 4px 2px rgb(220, 194, 167) }
```

Border

The CSS property to change the border of an element to HunterLab 75.2258, 0.7175, 17.5518 is called "border". The border property can be set on classes, ids or directly on the HTML element.

This example shows the color as border, it can be applied via the CSS property "border" or "border-color".

```
.border, #border, table{ border:4px solid rgb(220, 194, 167) }
```


If only the border color should be changed use the property `border-color`.

```
.border{ border-color:rgb(220, 194, 167) }
```

If you want to add a box shadow in that color use:

Here you see how a box with a 4 pixel `rgb(220, 194, 167)` colored shadow looks like.

```
.boxshadow{ -moz-box-shadow:4px 4px 4px 4px rgb(220, 194, 167); -webkit-box-shadow:4px 4px 4px 4px rgb(220, 194, 167); box-shadow:4px 4px 4px 4px rgb(220, 194, 167) }
```

Background

The CSS property to change the background color of an element to HunterLab 75.2258, 0.7175, 17.5518 is called "background". The background property can be set on classes, ids or directly on the HTML element.

```
.background, #background, body{  
background: rgb(220, 194, 167) }
```

If only the background color should be changed can be used:

```
.background{ background-color: rgb(220,  
194, 167) }
```

This example shows the color as background, it is applied via the CSS property "background".

To optimize and compress your CSS code, you can use our [online CSS compressor and optimizer](#) based on csstidy. If you want to create a linear or radial gradient as background or border, check our [CSS Gradient Generator](#).

Hey! You found this booklet interesting? Support Converting Colors with the new Membership Option!

The pro membership hides all ads, plus gives you double the colors in the color bucket, and more awesome pro features!

[Learn more, Memberships starting at \\$2.50/m!](#)

**Follow me
on Twitter!**

@ConvertingColor