

Converting Colors

HunterLab(75.3738, 2.7754,
5.9005)

Have a look what the booklet for
HunterLab(75.3738, 2.7754, 5.9005)
contains.

HunterLab(75.3789, 2.7657, 5.8867)	3
<i>Conversions</i>	4
<i>Details</i>	6
<i>Harmonies</i>	12
<i>Previews</i>	24
<i>Color Blindness Simulation</i>	28
<i>CSS Examples</i>	31

Color

**HunterLab(75.3789, 2.7657,
5.8867)**

Conversions

Conversions Part 1

Format	Color
Hex	D6C2C3
RGB	214, 194, 195
RGB Percent	84%, 76%, 76%
CMY	0.1608, 0.2392, 0.2353
CMYK	0.00, 0.09, 0.09, 0.16
HSL	357°, 20%, 80%
HSV	357°, 9%, 84%
XYZ	56.8736, 56.8198, 59.5995
YIQ	200.0940, 11.5990, 4.5510

Conversions

Conversions Part 2

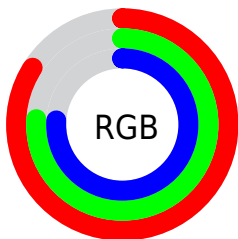
Format	Color
RYB	214, 194, 195
Decimal	14074563
CIELab	80.08, 7.20, 2.05
CIELCh	80, 7.489, 15.890
Yxy	56.8223, 0.3282, 0.3279
Android (android.graphics.Color)	4292264643 (0xFFD6C2C3)
YUV	200.0940, -2.5113, 12.1956
Hunter-Lab	75.3789, 2.7657, 5.8867

Details

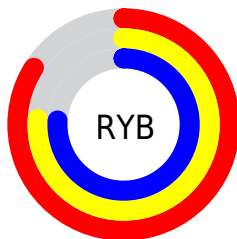
The HunterLab color $75.3789, 2.7657, 5.8867$ is a light color, and the websafe version is hex `CCCCCC`. A complement of this color would be $80.2296, -10.6766, 2.7270$, and the grayscale version is $76.0470, -4.0577, 4.1318$.

A 20% lighter version of the original color is $98.3156, -3.2098, 4.9865$, and $52.9624, 3.3154, 4.4833$ is the 20% darker color. If you saturate the color by 10%, you get $68.6398, 10.7000, 7.5977$, and if you desaturate by 10%, it is $82.4787, -4.8673, 4.3602$.

Distribution



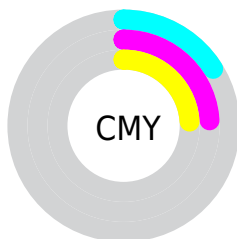
- Red (84%)
- Green (76%)
- Blue (76%)



- Red (84%)
- Yellow (76%)
- Blue (76%)



- Cyan (0%)
- Magenta (9%)
- Yellow (9%)
- Black (16%)



- Cyan (16%)
- Magenta (24%)
- Yellow (24%)

Brightness & Saturation Gradients

These gradients show how the HunterLab color 75.3789, 2.7657, 5.8867 changes by changing the brightness by 10 percent. The first figure shows a shift by +10% for each color and the second figure -10%.

Similar to the brightness gradients but the following saturation gradients show a change of the HunterLab color 75.3789, 2.7657, 5.8867 by changing the saturation by 10% instead.

■ 75.3789, 2.7657,
5.8867

■ 75.3789, 2.7657,
5.8867

203.1706, -1.4813,
13.5579

■ 63.9238, 3.0254,
5.1664

■ 100.1029, 2.0942,
7.4148

■ 53.1147, 3.2325,
4.4742

113.3130, 1.6938,
8.2185

■ 42.9946, 3.3788,
3.8121

127.0581, 1.2531,
9.0479

■ 33.6140, 3.4562,
3.1812

141.3179, 0.7747,
9.9024

■ 25.0366, 3.4537,
2.5822

156.0745, 0.2604,
10.7812

■ 17.3462, 3.3550,
2.0154


171.3118, -0.2880,

■ 10.6601, 3.1348,


11.6838


1.4794


187.0150, -0.8690,
12.6095


 0.9383, 33.3987,
0.6568


0.0000, NaN, NaN


 75.3789, 2.7657,
5.8867


 75.3789, 2.7657,
5.8867


 68.6398, 10.7000,
7.5977


 82.4787, -4.8673,
4.3602

 62.3215, 18.9432,
9.5104

 89.8826, -12.2190,
2.9906

 56.5074, 27.4404,
11.6353

 96.4553, -17.8957,
0.9677

 51.2974, 36.0397,
13.9553

■ 46.8077, 44.4303,
16.4051

■ 43.1598, 52.0991,
18.8483

■ 40.4560, 58.3694,
21.0736

■ 38.7394, 62.6023,
22.8394

■ 37.8857, 64.7437,
23.9343

Harmonies

Analogous

The Analogous color harmony consists of three colors that are next to each other on the color wheel.



75.3806, 2.8214, 2.4764



75.3789, 2.7657, 5.8867



75.3806, 0.8641, 8.6899

Triad

The Triadic color harmony groups three colors that are evenly spaced from another and form a triangle on the color wheel.



75.3806, 2.7636, 5.8879



75.3806, -8.9434, 8.5540



75.3806, -5.7101, -2.5825

Complementary

The Complementary color scheme is a pair of colors which are on the opposite of each other on the color wheel.



75.3789, 2.7657, 5.8867



80.2296, -10.6766, 2.7270

Split Complementary

Split-complementary colors differ from the complementary color scheme. The scheme consists of three colors, the original color and two neighbors of the complement color.



75.3806, -8.7948, -0.7912



75.3789, 2.7657, 5.8867



75.3806, -10.6376, 5.6945

Square

The Square scheme is like the rectangle color scheme, but the four colors are evenly spaced on the color wheel.



75.3806, 2.7636, 5.8879



75.3806, -5.9164, 10.1790



75.3806, -10.5838, 2.2737



75.3806, -2.1171, -2.5247

Rectangle

The Rectangle color scheme consists of four colors that form a rectangle on the color wheel.



75.3789, 2.7657, 5.8867



75.3806, -1.1710, 9.8823



75.3806, -10.5838, 2.2737



75.3806, -6.8394, -2.1731

Sweetspot

The Sweet Spot groups the original color and five complimentary colors.



75.3806, 2.7636, 5.8879



97.3429, -2.5470, 5.9799



75.8862, 5.6770, -2.8454



44.7095, -0.8310, 2.8356

0.0000, NaN, NaN



46.2646, -2.4686, 2.5136

Same Dimension

The Same Dimension uses a secret algorithm to generate beautiful new colors.



75.3806, 2.7636, 5.8879



90.4387, 5.0517, 7.5314



78.0416, -2.0220, 9.2757



35.2572, 1.3219, 2.7618



29.4274, 50.4588, 18.5239



7.2520, 12.4846, 4.1802

Inverse Universe

The Inverse Universe completely reimagines the original color for something new.



75.3806, 2.7636, 5.8879



90.4387, 5.0517, 7.5314



77.4526, -5.9775, -1.0790



35.2572, 1.3219, 2.7618



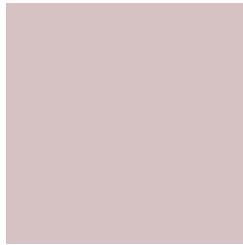
29.4274, 50.4588, 18.5239



7.2520, 12.4846, 4.1802

Previews

White Background



This preview shows how the HunterLab color 75.3789, 2.7657, 5.8867 looks on a white background.

Color Contrast Check

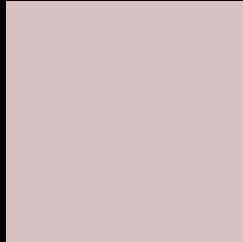
Large Text (above 18pt) WCAG AA × Fail

Any Text WCAG AA × Fail

Large Text (above 18pt) WCAG AAA × Fail

Any Text WCAG AAA × Fail

Black Background



This preview shows how the HunterLab color 75.3789, 2.7657, 5.8867 looks on a black background.

Color Contrast Check

Large Text (above 18pt) WCAG AA ✓ Pass

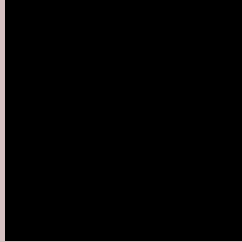
Any Text WCAG AA ✓ Pass

Large Text (above 18pt) WCAG AAA ✓ Pass

Any Text WCAG AAA ✓ Pass

If you want to check with other color combinations, try the [Color Contrast Checker](#).

HunterLab 75.3789, 2.7657, 5.8867 Background



This preview shows how black text looks on a background with the HunterLab color 75.3789, 2.7657, 5.8867.



This preview shows how white text looks on a background with the HunterLab color 75.3789, 2.7657,

Color Blindness Simulation

Color vision deficiency is a very complex topic, and I could not describe the different causes any better than Wikipedia does, so if you want to learn more, you should check out their [article about color blindness](#).

Dichromacy



Original Color

75.3789, 2.7657, 5.8867

Protanopia

75.4824, -2.9075, 4.9693

Deuteranopia

75.2991, 5.5131, 5.8425



Tritanopia

75.3679, 6.4932, 0.1165

Trichromacy



Original Color

75.3789, 2.7657, 5.8867

Protanomaly

75.5247, -1.2710, 5.5173

Deuteranomaly

75.3869, 4.3050, 5.9228

Tritanomaly

75.4313, 4.9473, 2.1573

Monochromacy



Original Color

75.3789, 2.7657, 5.8867

Achromatopsia

75.9987, -4.0551, 4.1292

Achromatomaly

75.7922, -1.7762, 4.8780

CSS Examples

Text

The CSS property to change the color of the text to HunterLab 75.3789, 2.7657, 5.8867 is called "color". The color property can be set on classes, ids or directly on the HTML element.

This example shows how text in the color `rgb(214, 194, 195)` looks like.

```
.text, #text, p{  
    color:rgb(214, 194, 195)  
}
```

If you want to add a text shadow in that color use the text-shadow property, you can generate a text shadow directly with our [CSS Text Shadow Generator](#).

Here you see how black text with a 4 pixel rgb(214, 194, 195) colored shadow looks like.

```
.shadow{ text-shadow: 4px 4px 2px rgb(214, 194, 195) }
```

Border

The CSS property to change the border of an element to HunterLab 75.3789, 2.7657, 5.8867 is called "border".

The border property can be set on classes, ids or directly on the HTML element.

This example shows the color as border, it can be applied via the CSS property "border" or "border-color".

```
.border, #border, table{ border:4px solid rgb(214, 194, 195) }
```


If only the border color should be changed use the property `border-color`.

```
.border{ border-color:rgb(214, 194, 195) }
```

If you want to add a box shadow in that color use:

Here you see how a box with a 4 pixel `rgb(214, 194, 195)` colored shadow looks like.

```
.boxshadow{ -moz-box-shadow:4px 4px 4px  
4px rgb(214, 194, 195); -webkit-box-  
shadow:4px 4px 4px 4px rgb(214, 194, 195);  
box-shadow:4px 4px 4px 4px rgb(214, 194,  
195) }
```

Background

The CSS property to change the background color of an element to HunterLab 75.3789, 2.7657, 5.8867 is called "background". The background property can be set on classes, ids or directly on the HTML element.

```
.background, #background, body{  
background: rgb(214, 194, 195) }
```

If only the background color should be changed can be used:

```
.background{ background-color: rgb(214,  
194, 195) }
```

This example shows the color as background, it is applied via the CSS property "background".

To optimize and compress your CSS code, you can use our [online CSS compressor and optimizer](#) based on csstidy. If you want to create a linear or radial gradient as background or border, check our [CSS Gradient Generator](#).

Hey! You found this booklet interesting? Support Converting Colors with the new Membership Option!

The pro membership hides all ads, plus gives you double the colors in the color bucket, and more awesome pro features!

[Learn more, Memberships starting at \\$2.50/m!](#)

**Follow me
on Twitter!**

@ConvertingColor