

Converting Colors

HunterLab(75.4114, 0.0643,
3.9875)

Have a look what the booklet for
HunterLab(75.4114, 0.0643, 3.9875)
contains.

HunterLab(75.4114, 0.0643, 3.9875)	3
<i>Conversions</i>	4
<i>Details</i>	6
<i>Harmonies</i>	12
<i>Previews</i>	24
<i>Color Blindness Simulation</i>	28
<i>CSS Examples</i>	31

Color

**HunterLab(75.4114, 0.0643,
3.9875)**

Conversions

Conversions Part 1

Format	Color
Hex	CFC4C7
RGB	207, 196, 199
RGB Percent	81%, 77%, 78%
CMY	0.1882, 0.2314, 0.2196
CMYK	0.00, 0.05, 0.04, 0.19
HSL	344°, 10%, 79%
HSV	344°, 5%, 81%
XYZ	55.7809, 56.8688, 62.0697
YIQ	199.6310, 5.5930, 3.2650

Conversions

Conversions Part 2

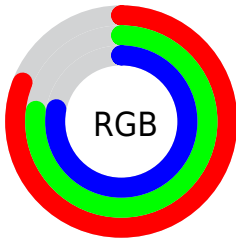
Format	Color
R_{YB}	207, 196, 199
Decimal	13616327
CIE _{Lab}	80.11, 4.37, -0.13
CIE _{LCh}	80, 4.370, 358.273
Yxy	56.8713, 0.3193, 0.3255
Android (android.graphics.Color)	4291806407 (0xFFCFC4C7)
YUV	199.6310, -0.3111, 6.4626
Hunter-Lab	75.4114, 0.0643, 3.9875

Details

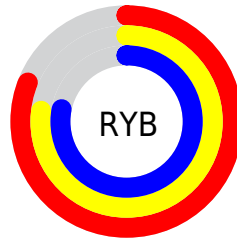
The HunterLab color $75.4114, 0.0643, 3.9875$ is a light color, and the websafe version is hex `CCCCCC`. A complement of this color would be $77.9247, -8.1385, 4.4064$, and the grayscale version is $75.8426, -4.0468, 4.1207$.

A 20% lighter version of the original color is $99.3633, -4.2744, 4.7000$, and $53.0685, 1.0436, 2.7902$ is the 20% darker color. If you saturate the color by 10%, you get $68.9221, 8.2781, 3.6318$, and if you desaturate by 10%, it is $82.2177, -7.9403, 4.6165$.

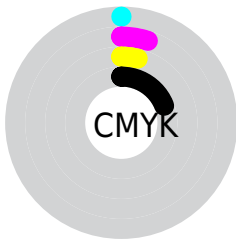
Distribution



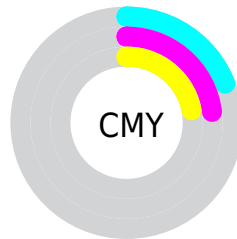
- Red (81%)
- Green (77%)
- Blue (78%)



- Red (81%)
- Yellow (77%)
- Blue (78%)



- Cyan (0%)
- Magenta (5%)
- Yellow (4%)
- Black (19%)



- Cyan (19%)
- Magenta (23%)
- Yellow (22%)

Brightness & Saturation Gradients

These gradients show how the HunterLab color 75.4114, 0.0643, 3.9875 changes by changing the brightness by 10 percent. The first figure shows a shift by +10% for each color and the second figure -10%.

Similar to the brightness gradients but the following saturation gradients show a change of the HunterLab color 75.4114, 0.0643, 3.9875 by changing the saturation by 10% instead.

■ 75.4114, 0.0643,
3.9875

■ 75.4114, 0.0643,
3.9875

■ 203.2158, -5.1910,
10.9000

■ 63.9546, 0.4605,
3.3712

■ 100.1386, -0.8609,
5.3231

■ 53.1436, 0.8115,
2.7893

■ 113.3503, -1.3805,
6.0369

■ 43.0215, 1.1107,
2.2454

■ 127.0967, -1.9358,
6.7800

■ 33.6388, 1.3520,
1.7422

■ 141.3579, -2.5249,
7.5513

■ 25.0591, 1.5270,
1.2835

■ 156.1159, -3.1464,
8.3498

■ 17.3661, 1.6236,
0.8740

■ 171.3545, -3.7987,

■ 10.6771, 1.6222,

9.1746

0.5205

187.0589, -4.4806,
10.0249

■ 1.0890, 17.4200,
-0.4421

0.0000, NaN, NaN

■ 75.4114, 0.0643,
3.9875

■ 75.4114, 0.0643,
3.9875

■ 68.9221, 8.2781,
3.6318

■ 82.2177, -7.9403,
4.6165

■ 62.7990, 16.6985,
3.6044

■ 89.2932, -15.7436,
5.4671

■ 57.1110, 25.2707,
3.9755

■ 95.5658, -21.8321,
5.3167

■ 51.9410, 33.8632,
4.8195

■ 95.9195, -19.8358,
0.2788

■ 47.3871, 42.2184,
6.2024

■ 43.5563, 49.9110,
8.1546

■ 40.5501, 56.3542,
10.6316

■ 38.4348, 60.9251,
13.4777

■ 37.2026, 63.2342,
16.4268

Harmonies

Analogous

The Analogous color harmony consists of three colors that are next to each other on the color wheel.



75.4130, -0.5527, 2.0511



75.4114, 0.0643, 3.9875



75.4130, -0.4284, 5.9068

Triad

The Triadic color harmony groups three colors that are evenly spaced from another and form a triangle on the color wheel.



75.4130, 0.0624, 3.9887



75.4130, -5.9363, 7.4192



75.4130, -6.1455, 0.7546

Complementary

The Complementary color scheme is a pair of colors which are on the opposite of each other on the color wheel.



75.4114, 0.0643, 3.9875



77.9247, -8.1385, 4.4064

Split Complementary

Split-complementary colors differ from the complementary color scheme. The scheme consists of three colors, the original color and two neighbors of the complement color.



75.4130, -7.5611, 2.2575



75.4114, 0.0643, 3.9875



75.4130, -7.4412, 6.1026

Square

The Square scheme is like the rectangle color scheme, but the four colors are evenly spaced on the color wheel.



75.4130, 0.0624, 3.9887



75.4130, -3.9058, 7.8545



75.4130, -8.0328, 4.2209



75.4130, -4.1499, 0.1523

Rectangle

The Rectangle color scheme consists of four colors that form a rectangle on the color wheel.



75.4114, 0.0643, 3.9875



75.4130, -1.3138, 6.9235



75.4130, -8.0328, 4.2209



75.4130, -6.7041, 1.1732

Sweetspot

The Sweet Spot groups the original color and five complimentary colors.



75.4130, 0.0624, 3.9887



98.2611, -3.2814, 5.2763



75.3713, 0.4256, 0.0138



45.4998, -1.5654, 2.4445

0.0000, NaN, NaN



46.2646, -2.4686, 2.5136

Same Dimension

The Same Dimension uses a secret algorithm to generate beautiful new colors.



75.4130, 0.0624, 3.9887



94.8301, 0.8602, 5.0023



76.0374, -1.6517, 6.1007



35.3178, 0.5212, 1.8600



29.2472, 50.7574, 13.6995



7.0125, 12.3576, 1.8301

Inverse Universe

The Inverse Universe completely reimagines the original color for something new.



75.4130, 0.0624, 3.9887



94.8301, 0.8602, 5.0023



77.2800, -6.4254, 2.2169



35.3178, 0.5212, 1.8600



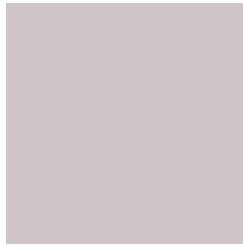
29.2472, 50.7574, 13.6995



7.0125, 12.3576, 1.8301

Previews

White Background



This preview shows how the HunterLab color 75.4114, 0.0643, 3.9875 looks on a white background.

Color Contrast Check

Large Text (above 18pt) WCAG AA × Fail

Any Text WCAG AA × Fail

Large Text (above 18pt) WCAG AAA × Fail

Any Text WCAG AAA × Fail

Black Background



This preview shows how the HunterLab color 75.4114, 0.0643, 3.9875 looks on a black background.

Color Contrast Check

Large Text (above 18pt) WCAG AA ✓ Pass

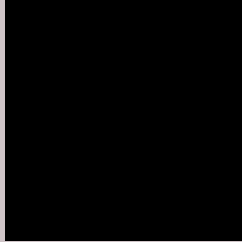
Any Text WCAG AA ✓ Pass

Large Text (above 18pt) WCAG AAA ✓ Pass

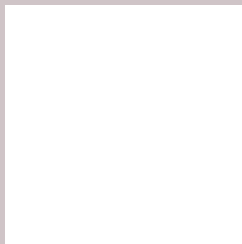
Any Text WCAG AAA ✓ Pass

If you want to check with other color combinations, try the [Color Contrast Checker](#).

HunterLab 75.4114, 0.0643, 3.9875 Background



This preview shows how black text looks on a background with the HunterLab color 75.4114, 0.0643, 3.9875.



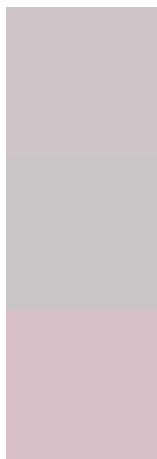
This preview shows how white text looks on a background with the HunterLab color 75.4114, 0.0643,

3.9875.

Color Blindness Simulation

Color vision deficiency is a very complex topic, and I could not describe the different causes any better than Wikipedia does, so if you want to learn more, you should check out their [article about color blindness](#).

Dichromacy



Original Color

75.4114, 0.0643, 3.9875

Protanopia

75.5744, -2.4054, 3.6572

Deuteranopia

75.2470, 5.6442, 3.4099



Tritanopia

75.3605, 3.6493, -1.4698

Trichromacy



Original Color

75.4114, 0.0643, 3.9875

Protanomaly

75.4586, -1.2540, 3.5402

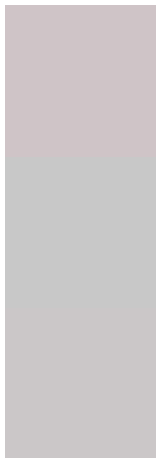
Deuteranomaly

75.1373, 3.7693, 3.2466

Tritanomaly

75.4297, 2.0999, 0.6179

Monochromacy



Original Color

75.4114, 0.0643, 3.9875

Achromatopsia

75.9987, -4.0551, 4.1292

Achromatomaly

75.9694, -2.5952, 4.1202

CSS Examples

Text

The CSS property to change the color of the text to HunterLab 75.4114, 0.0643, 3.9875 is called "color". The color property can be set on classes, ids or directly on the HTML element.

This example shows how text in the color `rgb(207, 196, 199)` looks like.

```
.text, #text, p{  
    color:rgb(207, 196, 199)  
}
```

If you want to add a text shadow in that color use the text-shadow property, you can generate a text shadow directly with our [CSS Text Shadow Generator](#).

Here you see how black text with a 4 pixel rgb(207, 196, 199) colored shadow looks like.

```
.shadow{ text-shadow: 4px 4px 2px rgb(207, 196, 199) }
```

Border

The CSS property to change the border of an element to HunterLab 75.4114, 0.0643, 3.9875 is called "border". The border property can be set on classes, ids or directly on the HTML element.

This example shows the color as border, it can be applied via the CSS property "border" or "border-color".

```
.border, #border, table{ border:4px solid rgb(207, 196, 199) }
```


If only the border color should be changed use the property `border-color`.

```
.border{ border-color:rgb(207, 196, 199) }
```

If you want to add a box shadow in that color use:

Here you see how a box with a 4 pixel `rgb(207, 196, 199)` colored shadow looks like.

```
.boxshadow{ -moz-box-shadow:4px 4px 4px  
4px rgb(207, 196, 199); -webkit-box-  
shadow:4px 4px 4px 4px rgb(207, 196, 199);  
box-shadow:4px 4px 4px 4px rgb(207, 196,  
199) }
```

Background

The CSS property to change the background color of an element to HunterLab 75.4114, 0.0643, 3.9875 is called "background". The background property can be set on classes, ids or directly on the HTML element.

```
.background, #background, body{  
background: rgb(207, 196, 199) }
```

If only the background color should be changed can be used:

```
.background{ background-color: rgb(207,  
196, 199) }
```

This example shows the color as background, it is applied via the CSS property "background".

To optimize and compress your CSS code, you can use our [online CSS compressor and optimizer](#) based on csstidy. If you want to create a linear or radial gradient as background or border, check our [CSS Gradient Generator](#).

Hey! You found this booklet interesting? Support Converting Colors with the new Membership Option!

The pro membership hides all ads, plus gives you double the colors in the color bucket, and more awesome pro features!

[Learn more, Memberships starting at \\$2.50/m!](#)

**Follow me
on Twitter!**

@ConvertingColor