

Converting Colors

HunterLab(75.4436, -0.0118,
17.3741)

Have a look what the booklet for
HunterLab(75.4436, -0.0118,
17.3741) contains.

HunterLab(75.4436, -0.0118, 17.3741)	3
<i>Conversions</i>	4
<i>Details</i>	6
<i>Harmonies</i>	12
<i>Previews</i>	24
<i>Color Blindness Simulation</i>	28
<i>CSS Examples</i>	31

Color

**HunterLab(75.4436, -0.0118,
17.3741)**

Conversions

Conversions Part 1

Format	Color
Hex	DBC3A8
RGB	219, 195, 168
RGB Percent	86%, 76%, 66%
CMY	0.1412, 0.2353, 0.3412
CMYK	0.00, 0.11, 0.23, 0.14
HSL	32°, 41%, 76%
HSV	32°, 23%, 86%
XYZ	55.7964, 56.9174, 45.0911
YIQ	199.0980, 22.9710, -3.3090

Conversions

Conversions Part 2

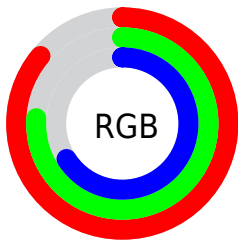
Format	Color
R _Y B	213, 219, 168
Decimal	14402472
CIE Lab	80.13, 4.29, 16.67
CIE LCh	80, 17.215, 75.575
Yxy	56.9199, 0.3536, 0.3607
Android (android.graphics.Color)	4292592552 (0xFFDBC3A8)
YUV	199.0980, -15.3313, 17.4541
Hunter-Lab	75.4436, -0.0118, 17.3741

Details

The HunterLab color $75.4436, -0.0118, 17.3741$ is a light color, and the websafe version is hex `CCCC99`. A complement of this color would be $71.5103, -5.8676, -11.6039$, and the grayscale version is $75.6722, -4.0377, 4.1114$.

A 20% lighter version of the original color is $98.0859, -9.0125, 18.0830$, and $53.0068, 0.7921, 14.1949$ is the 20% darker color. If you saturate the color by 10%, you get $71.9109, 2.4786, 21.8990$, and if you desaturate by 10%, it is $79.1102, -2.1542, 12.2418$.

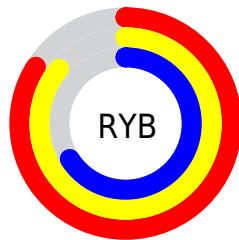
Distribution



Red (86%)

Green (76%)

Blue (66%)



Red (84%)

Yellow (86%)

Blue (66%)

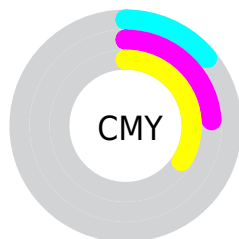


Cyan (0%)

Magenta (11%)

Yellow (23%)

Black (14%)



Cyan (14%)

Magenta (24%)

Yellow (34%)

Brightness & Saturation Gradients

These gradients show how the HunterLab color 75.4436, -0.0118, 17.3741 changes by changing the brightness by 10 percent. The first figure shows a shift by +10% for each color and the second figure -10%.

Similar to the brightness gradients but the following saturation gradients show a change of the HunterLab color 75.4436, -0.0118, 17.3741 by changing the saturation by 10% instead.

■ 75.4436, -0.0118,
17.3741

■ 75.4436, -0.0118,
17.3741

■ 203.2607, -5.2969,
30.4708

■ 63.9851, 0.3879,
15.8914

■ 100.1740, -0.9449,
20.2989

■ 53.1723, 0.7431,
14.3828

■ 113.3872, -1.4680,
21.7493

■ 43.0483, 1.0468,
12.8379

■ 127.1351, -2.0266,
23.1970

■ 33.6634, 1.2929,
11.2397

■ 141.3977, -2.6190,
24.6447

■ 25.0814, 1.4732,
9.5618

■ 156.1570, -3.2435,
26.0943

■ 17.3859, 1.5756,
7.7608

■ 171.3969, -3.8988,

■ 10.6939, 1.5808,

27.5477

7.1752

187.1026, -4.5836,
29.0061

■ 1.2205, 15.2463,
0.8543

0.0000, NaN, NaN

■ 75.4436, -0.0118,
17.3741

■ 75.4436, -0.0118,
17.3741

■ 71.9109, 2.4786,
21.8990

■ 79.1102, -2.1542,
12.2418

■ 68.5174, 5.3445,
25.7551

■ 82.8960, -3.9641,
6.5545

■ 65.2762, 8.5992,
28.8845

■ 86.7936, -5.4671,
0.3645

■ 62.1989, 12.2508,
31.2323

■ 90.7737, -6.8041,
-5.9791

■ 59.2973, 16.2954,
32.7543

■ 94.0807, -12.1368,
-1.8626

■ 56.5827, 20.7117,
33.4288

■ 96.8505, -16.4720,
1.4734

■ 54.0641, 25.4531,
33.2762

■ 52.4803, 28.7497,
32.8414

Harmonies

Analogous

The Analogous color harmony consists of three colors that are next to each other on the color wheel.



75.4453, 7.4650, 14.1606



75.4436, -0.0118, 17.3741



75.4453, -8.2654, 17.3114

Triad

The Triadic color harmony groups three colors that are evenly spaced from another and form a triangle on the color wheel.



75.4453, -0.0142, 17.3752



75.4453, -18.7901, -0.0826



75.4453, 7.7049, -7.3069

Complementary

The Complementary color scheme is a pair of colors which are on the opposite of each other on the color wheel.



75.4436, -0.0118, 17.3741



71.5103, -5.8676, -11.6039

Split Complementary

Split-complementary colors differ from the complementary color scheme. The scheme consists of three colors, the original color and two neighbors of the complement color.



75.4453, 0.3017, -12.0231



75.4436, -0.0118, 17.3741



75.4453, -14.8748, -7.5550

Square

The Square scheme is like the rectangle color scheme, but the four colors are evenly spaced on the color wheel.



75.4453, -0.0142, 17.3752



75.4453, -18.8664, 7.7902



75.4453, -7.9628, -12.1185



75.4453, 12.0505, 0.2276

Rectangle

The Rectangle color scheme consists of four colors that form a rectangle on the color wheel.



75.4436, -0.0118, 17.3741



75.4453, -13.0881, 15.4366



75.4453, -7.9628, -12.1185



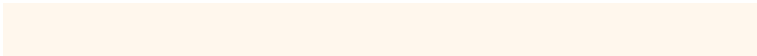
75.4453, 5.4775, -9.3086

Sweetspot

The Sweet Spot groups the original color and five complimentary colors.



75.4453, -0.0142, 17.3752



96.7788, -3.9429, 10.4104



68.4840, 17.7816, -0.9915



44.6472, -1.7646, 5.0084

0.0000, NaN, NaN



46.2646, -2.4686, 2.5136

Same Dimension

The Same Dimension uses a secret algorithm to generate beautiful new colors.



75.4453, -0.0142, 17.3752



87.5395, 1.3961, 23.4010



82.7158, -12.3425, 24.1984



37.6659, -1.3510, 4.7286



40.6844, 21.5233, 25.4463



11.1552, 3.7628, 6.9397

Inverse Universe

The Inverse Universe completely reimagines the original color for something new.



71.5103, -5.8676, -11.6039



81.9065, -6.9454, -18.1353



64.4507, 6.6333, -21.8215



36.9085, -2.4856, -0.8379



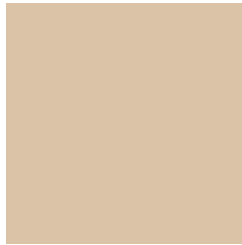
30.0080, 10.3469, -59.8434



8.6889, 0.6216, -12.2022

Previews

White Background



This preview shows how the HunterLab color 75.4436, -0.0118, 17.3741 looks on a white background.

Color Contrast Check

Large Text (above 18pt) WCAG AA × Fail

Any Text WCAG AA × Fail

Large Text (above 18pt) WCAG AAA × Fail

Any Text WCAG AAA × Fail

Black Background



This preview shows how the HunterLab color 75.4436, -0.0118, 17.3741 looks on a black background.

Color Contrast Check

Large Text (above 18pt) WCAG AA ✓ Pass

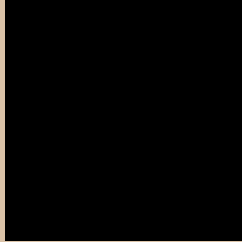
Any Text WCAG AA ✓ Pass

Large Text (above 18pt) WCAG AAA ✓ Pass

Any Text WCAG AAA ✓ Pass

If you want to check with other color combinations, try the [Color Contrast Checker](#).

HunterLab 75.4436, -0.0118, 17.3741 Background



This preview shows how black text looks on a background with the HunterLab color 75.4436, -0.0118, 17.3741.



This preview shows how white text looks on a background with the HunterLab color 75.4436, -0.0118,

Color Blindness Simulation

Color vision deficiency is a very complex topic, and I could not describe the different causes any better than Wikipedia does, so if you want to learn more, you should check out their [article about color blindness](#).

Dichromacy



Original Color

75.4436, -0.0118, 17.3741

Protanopia

75.3961, -4.7039, 16.4702

Deuteranopia

75.3553, 5.7669, 17.0009



Tritanopia

75.4471, 9.6003, 1.2695

Trichromacy



Original Color

75.4436, -0.0118, 17.3741

Protanomaly

75.4607, -2.9768, 16.9541

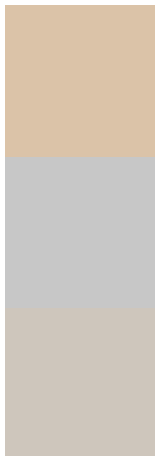
Deuteranomaly

75.2140, 3.7978, 16.8238

Tritanomaly

75.5213, 6.0790, 7.4912

Monochromacy



Original Color

75.4436, -0.0118, 17.3741

Achromatopsia

75.5728, -4.0324, 4.1060

Achromatomaly

75.5915, -3.0595, 9.2088

CSS Examples

Text

The CSS property to change the color of the text to HunterLab 75.4436, -0.0118, 17.3741 is called "color". The color property can be set on classes, ids or directly on the HTML element.

This example shows how text in the color `rgb(219, 195, 168)` looks like.

```
.text, #text, p{  
    color:rgb(219, 195, 168)  
}
```

If you want to add a text shadow in that color use the text-shadow property, you can generate a text shadow directly with our [CSS Text Shadow Generator](#).

Here you see how black text with a 4 pixel rgb(219, 195, 168) colored shadow looks like.

```
.shadow{ text-shadow: 4px 4px 2px rgb(219, 195, 168) }
```

Border

The CSS property to change the border of an element to HunterLab 75.4436, -0.0118, 17.3741 is called "border". The border property can be set on classes, ids or directly on the HTML element.

This example shows the color as border, it can be applied via the CSS property "border" or "border-color".

```
.border, #border, table{ border:4px solid rgb(219, 195, 168) }
```


If only the border color should be changed use the property `border-color`.

```
.border{ border-color:rgb(219, 195, 168) }
```

If you want to add a box shadow in that color use:

Here you see how a box with a 4 pixel `rgb(219, 195, 168)` colored shadow looks like.

```
.boxshadow{ -moz-box-shadow:4px 4px 4px  
4px rgb(219, 195, 168); -webkit-box-  
shadow:4px 4px 4px 4px rgb(219, 195, 168);  
box-shadow:4px 4px 4px 4px rgb(219, 195,  
168) }
```

Background

The CSS property to change the background color of an element to HunterLab 75.4436, -0.0118, 17.3741 is called "background". The background property can be set on classes, ids or directly on the HTML element.

```
.background, #background, body{  
background: rgb(219, 195, 168) }
```

If only the background color should be changed can be used:

```
.background{ background-color: rgb(219,  
195, 168) }
```

This example shows the color as background, it is applied via the CSS property "background".

To optimize and compress your CSS code, you can use our [online CSS compressor and optimizer](#) based on csstidy. If you want to create a linear or radial gradient as background or border, check our [CSS Gradient Generator](#).

Hey! You found this booklet interesting? Support Converting Colors with the new Membership Option!

The pro membership hides all ads, plus gives you double the colors in the color bucket, and more awesome pro features!

[Learn more, Memberships starting at \\$2.50/m!](#)

**Follow me
on Twitter!**

@ConvertingColor