

Converting Colors

HunterLab(75.4781, 3.8544,
3.5987)

Have a look what the booklet for
HunterLab(75.4781, 3.8544, 3.5987)
contains.

HunterLab(75.5313, 3.5861, 3.7112)	3
<i>Conversions</i>	4
<i>Details</i>	6
<i>Harmonies</i>	12
<i>Previews</i>	24
<i>Color Blindness Simulation</i>	28
<i>CSS Examples</i>	31

Color

**HunterLab(75.5313, 3.5861,
3.7112)**

Conversions

Conversions Part 1

Format	Color
Hex	D6C2C8
RGB	214, 194, 200
RGB Percent	84%, 76%, 78%
CMY	0.1608, 0.2392, 0.2157
CMYK	0.00, 0.09, 0.07, 0.16
HSL	342°, 20%, 80%
HSV	342°, 9%, 84%
XYZ	57.4486, 57.0498, 62.6273
YIQ	200.6640, 9.9940, 6.1060

Conversions

Conversions Part 2

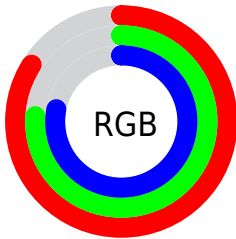
Format	Color
R_{YB}	214, 194, 200
Decimal	14074568
CIE Lab	80.21, 8.06, -0.45
CIE LCh	80, 8.073, 356.796
Yxy	57.0523, 0.3243, 0.3221
Android (android.graphics.Color)	4292264648 (0xFFD6C2C8)
YUV	200.6640, -0.3274, 11.6957
Hunter-Lab	75.5313, 3.5861, 3.7112

Details

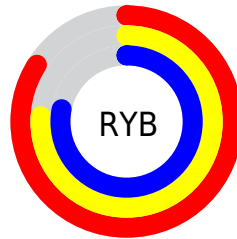
The HunterLab color $75.5313, 3.5861, 3.7112$ is a light color, and the websafe version is hex `CCCCCC`. A complement of this color would be $80.0737, -11.5444, 4.9510$, and the grayscale version is $76.2815, -4.0702, 4.1445$.

A 20% lighter version of the original color is $98.7291, -3.2108, 3.9652$, and $53.1059, 4.0840, 2.4343$ is the 20% darker color. If you saturate the color by 10%, you get $68.9461, 12.3107, 3.2205$, and if you desaturate by 10%, it is $82.4677, -4.9273, 4.5165$.

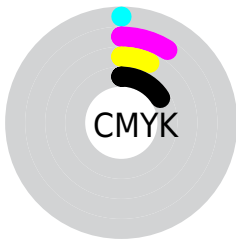
Distribution



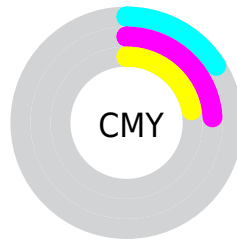
- Red (84%)
- Green (76%)
- Blue (78%)



- Red (84%)
- Yellow (76%)
- Blue (78%)



- Cyan (0%)
- Magenta (9%)
- Yellow (7%)
- Black (16%)



- Cyan (16%)
- Magenta (24%)
- Yellow (22%)

Brightness & Saturation Gradients

These gradients show how the HunterLab color 75.5313, 3.5861, 3.7112 changes by changing the brightness by 10 percent. The first figure shows a shift by +10% for each color and the second figure -10%.

Similar to the brightness gradients but the following saturation gradients show a change of the HunterLab color 75.5313, 3.5861, 3.7112 by changing the saturation by 10% instead.

■ 75.5313, 3.5861,
3.7112

■ 75.5313, 3.5861,
3.7112

203.3827, -0.3628,
10.5163

■ 64.0681, 3.8058,
3.1096

■ 100.2704, 2.9895,
5.0197

■ 53.2503, 3.9707,
2.5432

113.4876, 2.6242,
5.7208

■ 43.1210, 4.0722,
2.0158

127.2394, 2.2174,
6.4516

■ 33.7304, 4.1019,
1.5305

141.5058, 1.7717,
7.2111

■ 25.1422, 4.0480,
1.0912

156.2687, 1.2892,
7.9983

■ 17.4396, 3.8934,
0.7034

171.5121, 0.7715,

■ 10.7396, 3.6113,

8.8120

0.3748

187.2212, 0.2204,
9.6517

■ 1.5211, 23.0092,
-1.1468

0.0000, NaN, NaN

■ 75.5313, 3.5861,
3.7112

■ 75.5313, 3.5861,
3.7112

■ 68.9461, 12.3107,
3.2205

■ 82.4677, -4.9273,
4.5165

■ 62.7687, 21.2257,
3.1103

■ 89.7013, -13.2283,
5.5758

■ 57.0771, 30.2419,
3.4635

■ 96.1279, -19.7357,
5.6314

■ 51.9639, 39.1700,
4.3661

■ 96.4553, -17.8957,
0.9677

■ 47.5356, 47.6685,
5.8898

■ 43.9030, 55.2149,
8.0574

■ 41.1599, 61.1571,
10.7963

■ 39.3479, 64.9097,
13.9062

■ 38.3539, 66.4777,
17.0300

Harmonies

Analogous

The Analogous color harmony consists of three colors that are next to each other on the color wheel.



75.5330, 2.3302, 0.1080



75.5313, 3.5861, 3.7112



75.5330, 2.7627, 7.2510

Triad

The Triadic color harmony groups three colors that are evenly spaced from another and form a triangle on the color wheel.



75.5330, 3.5840, 3.7125



75.5330, -7.3786, 10.1941



75.5330, -8.0891, -2.0912

Complementary

The Complementary color scheme is a pair of colors which are on the opposite of each other on the color wheel.



75.5313, 3.5861, 3.7112



80.0737, -11.5444, 4.9510

Split Complementary

Split-complementary colors differ from the complementary color scheme. The scheme consists of three colors, the original color and two neighbors of the complement color.



75.5330, -10.5991, 0.8311



75.5313, 3.5861, 3.7112



75.5330, -10.1948, 7.9071

Square

The Square scheme is like the rectangle color scheme, but the four colors are evenly spaced on the color wheel.



75.5330, 3.5840, 3.7125



75.5330, -3.6156, 10.8797



75.5330, -11.3622, 4.5083



75.5330, -4.4521, -3.3476

Rectangle

The Rectangle color scheme consists of four colors that form a rectangle on the color wheel.



75.5313, 3.5861, 3.7112



75.5330, 1.1577, 9.1189



75.5330, -11.3622, 4.5083



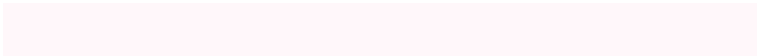
75.5330, -9.0898, -1.2641

Sweetspot

The Sweet Spot groups the original color and five complimentary colors.



75.5330, 3.5840, 3.7125



97.4041, -2.2135, 5.1068



75.3997, 4.0418, -3.4947



44.7454, -0.6361, 2.3246

0.0000, NaN, NaN



46.2646, -2.4686, 2.5136

Same Dimension

The Same Dimension uses a secret algorithm to generate beautiful new colors.



75.5330, 3.5840, 3.7125



90.6586, 6.2312, 4.3914



76.5386, 0.5412, 7.6331



35.3292, 1.7089, 1.7353



29.8030, 51.8473, 12.9878



7.4179, 13.0950, 1.7569

Inverse Universe

The Inverse Universe completely reimagines the original color for something new.



75.5330, 3.5840, 3.7125



90.6586, 6.2312, 4.3914



79.0058, -8.4975, 0.7913



35.3292, 1.7089, 1.7353



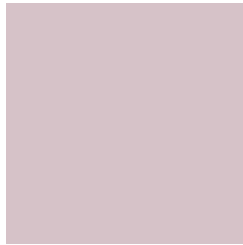
29.8030, 51.8473, 12.9878



7.4179, 13.0950, 1.7569

Previews

White Background



This preview shows how the HunterLab color 75.5313, 3.5861, 3.7112 looks on a white background.

Color Contrast Check

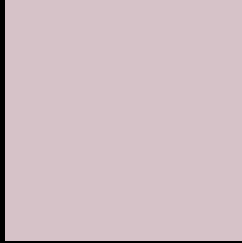
Large Text (above 18pt) WCAG AA × Fail

Any Text WCAG AA × Fail

Large Text (above 18pt) WCAG AAA × Fail

Any Text WCAG AAA × Fail

Black Background



This preview shows how the HunterLab color 75.5313, 3.5861, 3.7112 looks on a black background.

Color Contrast Check

Large Text (above 18pt) WCAG AA ✓ Pass

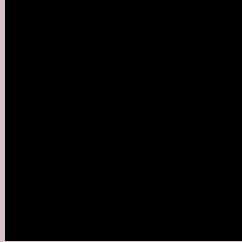
Any Text WCAG AA ✓ Pass

Large Text (above 18pt) WCAG AAA ✓ Pass

Any Text WCAG AAA ✓ Pass

If you want to check with other color combinations, try the [Color Contrast Checker](#).

HunterLab 75.5313, 3.5861, 3.7112 Background



This preview shows how black text looks on a background with the HunterLab color 75.5313, 3.5861, 3.7112.



This preview shows how white text looks on a background with the HunterLab color 75.5313, 3.5861,

Color Blindness Simulation

Color vision deficiency is a very complex topic, and I could not describe the different causes any better than Wikipedia does, so if you want to learn more, you should check out their [article about color blindness](#).

Dichromacy



Original Color

75.5313, 3.5861, 3.7112

Protanopia

75.5447, -2.3836, 2.6543

Deuteranopia

75.6409, 5.4633, 3.8737



Tritanopia

75.5917, 5.8062, -0.1245

Trichromacy



Original Color

75.5313, 3.5861, 3.7112

Protanomaly

75.6778, -0.4385, 3.3324

Deuteranomaly

75.5392, 5.1222, 3.7474

Tritanomaly

75.4949, 5.2880, 1.2522

Monochromacy



Original Color

75.5313, 3.5861, 3.7112

Achromatopsia

76.4250, -4.0778, 4.1523

Achromatomaly

75.9783, -0.9511, 3.6797

CSS Examples

Text

The CSS property to change the color of the text to HunterLab 75.5313, 3.5861, 3.7112 is called "color". The color property can be set on classes, ids or directly on the HTML element.

This example shows how text in the color `rgb(214, 194, 200)` looks like.

```
.text, #text, p{  
    color:rgb(214, 194, 200)  
}
```

If you want to add a text shadow in that color use the text-shadow property, you can generate a text shadow directly with our [CSS Text Shadow Generator](#).

Here you see how black text with a 4 pixel rgb(214, 194, 200) colored shadow looks like.

```
.shadow{ text-shadow: 4px 4px 2px rgb(214, 194, 200) }
```

Border

The CSS property to change the border of an element to HunterLab 75.5313, 3.5861, 3.7112 is called "border".

The border property can be set on classes, ids or directly on the HTML element.

This example shows the color as border, it can be applied via the CSS property "border" or "border-color".

```
.border, #border, table{ border:4px solid rgb(214, 194, 200) }
```


If only the border color should be changed use the property `border-color`.

```
.border{ border-color:rgb(214, 194, 200) }
```

If you want to add a box shadow in that color use:

Here you see how a box with a 4 pixel `rgb(214, 194, 200)` colored shadow looks like.

```
.boxshadow{ -moz-box-shadow:4px 4px 4px  
4px rgb(214, 194, 200); -webkit-box-  
shadow:4px 4px 4px 4px rgb(214, 194, 200);  
box-shadow:4px 4px 4px 4px rgb(214, 194,  
200) }
```

Background

The CSS property to change the background color of an element to HunterLab 75.5313, 3.5861, 3.7112 is called "background". The background property can be set on classes, ids or directly on the HTML element.

```
.background, #background, body{  
background: rgb(214, 194, 200) }
```

If only the background color should be changed can be used:

```
.background{ background-color: rgb(214,  
194, 200) }
```

This example shows the color as background, it is applied via the CSS property "background".

To optimize and compress your CSS code, you can use our [online CSS compressor and optimizer](#) based on csstidy. If you want to create a linear or radial gradient as background or border, check our [CSS Gradient Generator](#).

Hey! You found this booklet interesting? Support Converting Colors with the new Membership Option!

The pro membership hides all ads, plus gives you double the colors in the color bucket, and more awesome pro features!

[Learn more, Memberships starting at \\$2.50/m!](#)

**Follow me
on Twitter!**

@ConvertingColor