

Converting Colors

HunterLab(75.5424, 5.1183,
3.7528)

Have a look what the booklet for
HunterLab(75.5424, 5.1183, 3.7528)
contains.

HunterLab(75.5392, 5.1222, 3.7474)	3
<i>Conversions</i>	4
<i>Details</i>	6
<i>Harmonies</i>	12
<i>Previews</i>	24
<i>Color Blindness Simulation</i>	28
<i>CSS Examples</i>	31

Color

**HunterLab(75.5392, 5.1222,
3.7474)**

Conversions

Conversions Part 1

Format	Color
Hex	D9C1C8
RGB	217, 193, 200
RGB Percent	85%, 76%, 78%
CMY	0.1490, 0.2431, 0.2157
CMYK	0.00, 0.11, 0.08, 0.15
HSL	343°, 24%, 80%
HSV	343°, 11%, 85%
XYZ	58.1105, 57.0617, 62.5948
YIQ	200.9740, 12.0570, 7.2650

Conversions

Conversions Part 2

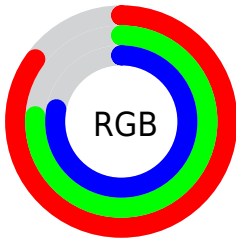
Format	Color
R _Y B	217, 193, 200
Decimal	14270920
CIE Lab	80.22, 9.65, -0.41
CIE LCh	80, 9.657, 357.562
Yxy	57.0642, 0.3269, 0.3210
Android (android.graphics.Color)	4292461000 (0xFFD9C1C8)
YUV	200.9740, -0.4802, 14.0548
Hunter-Lab	75.5392, 5.1222, 3.7474

Details

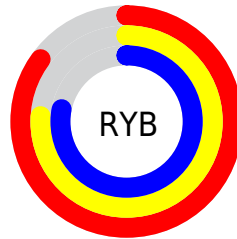
The HunterLab color **75.5392, 5.1222, 3.7474** is a light color, and the websafe version is hex **CCCCCC**. A complement of this color would be **81.0048, -12.9811, 5.0573**, and the grayscale version is **76.4137, -4.0772, 4.1517**.

A 20% lighter version of the original color is **98.0976, -2.1450, 3.2290**, and **53.1243, 5.5530, 2.4819** is the 20% darker color. If you saturate the color by 10%, you get **68.9058, 14.0009, 3.3878**, and if you desaturate by 10%, it is **82.5399, -3.5413, 4.4365**.

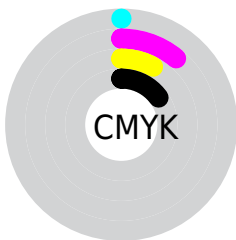
Distribution



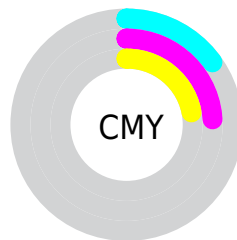
- Red (85%)
- Green (76%)
- Blue (78%)



- Red (85%)
- Yellow (76%)
- Blue (78%)



- Cyan (0%)
- Magenta (11%)
- Yellow (8%)
- Black (15%)



- Cyan (15%)
- Magenta (24%)
- Yellow (22%)

Brightness & Saturation Gradients

These gradients show how the HunterLab color 75.5392, 5.1222, 3.7474 changes by changing the brightness by 10 percent. The first figure shows a shift by +10% for each color and the second figure -10%.

Similar to the brightness gradients but the following saturation gradients show a change of the HunterLab color 75.5392, 5.1222, 3.7474 by changing the saturation by 10% instead.

■ 75.5392, 5.1222,
3.7474

■ 75.5392, 5.1222,
3.7474

203.3937, 1.7310,
10.5666

■ 64.0756, 5.2669,
3.1439

■ 100.2791, 4.6655,
5.0595

■ 53.2574, 5.3529,
2.5755

113.4967, 4.3659,
5.7622

■ 43.1275, 5.3708,
2.0459

127.2488, 4.0226,
6.4947

■ 33.7365, 5.3114,
1.5583

141.5155, 3.6382,
7.2557

■ 25.1476, 5.1615,
1.1165

156.2788, 3.2150,
8.0443

■ 17.4445, 4.9024,
0.7258

171.5225, 2.7549,

■ 10.7437, 4.5054,

8.8595

0.3940

187.2319, 2.2597,
9.7006

■ 1.5453, 27.1249,
-1.0179

0.0000, NaN, NaN

■ 75.5392, 5.1222,
3.7474

■ 75.5392, 5.1222,
3.7474

■ 68.9058, 14.0009,
3.3878

■ 82.5399, -3.5413,
4.4365

■ 62.6999, 23.0666,
3.4259

■ 89.8508, -11.9847,
5.3918

■ 57.0040, 32.2149,
3.9455

■ 96.4018, -18.6684,
5.3919

■ 51.9152, 41.2308,
5.0306

■ 96.6912, -17.0451,
1.2698

■ 47.5443, 49.7362,
6.7438

■ 44.0033, 57.1690,
9.0890

■ 41.3817, 62.8571,
11.9649

■ 39.7082, 66.2477,
15.1401

■ 38.8764, 67.5079,
17.9053

Harmonies

Analogous

The Analogous color harmony consists of three colors that are next to each other on the color wheel.



75.5409, 3.6710, -0.6006



75.5392, 5.1222, 3.7474



75.5409, 4.0674, 7.9475

Triad

The Triadic color harmony groups three colors that are evenly spaced from another and form a triangle on the color wheel.



75.5409, 5.1201, 3.7487



75.5409, -8.1329, 11.2793



75.5409, -8.7774, -3.4351

Complementary

The Complementary color scheme is a pair of colors which are on the opposite of each other on the color wheel.



75.5392, 5.1222, 3.7474



81.0048, -12.9811, 5.0573

Split Complementary

Split-complementary colors differ from the complementary color scheme. The scheme consists of three colors, the original color and two neighbors of the complement color.



75.5409, -11.8091, 0.0639



75.5392, 5.1222, 3.7474



75.5409, -11.4434, 8.5391

Square

The Square scheme is like the rectangle color scheme, but the four colors are evenly spaced on the color wheel.



75.5409, 5.1201, 3.7487



75.5409, -3.6535, 12.1358



75.5409, -12.7733, 4.4733



75.5409, -4.4152, -4.9018

Rectangle

The Rectangle color scheme consists of four colors that form a rectangle on the color wheel.



75.5392, 5.1222, 3.7474



75.5409, 2.1023, 10.1313



75.5409, -12.7733, 4.4733



75.5409, -9.9818, -2.4476

Sweetspot

The Sweet Spot groups the original color and five complimentary colors.



75.5409, 5.1201, 3.7487



97.4021, -2.2247, 5.1359



75.3821, 5.7003, -5.0827



44.7442, -0.6426, 2.3417

0.0000, NaN, NaN



46.2646, -2.4686, 2.5136

Same Dimension

The Same Dimension uses a secret algorithm to generate beautiful new colors.



75.5409, 5.1201, 3.7487



89.0065, 8.3226, 4.3763



76.7470, 1.5001, 8.3390



36.2128, 1.7493, 1.8140



30.2738, 52.6214, 13.5420



7.8011, 13.7449, 2.0545

Inverse Universe

The Inverse Universe completely reimagines the original color for something new.



75.5409, 5.1201, 3.7487



89.0065, 8.3226, 4.3763



79.7094, -9.3561, 0.1232



36.2128, 1.7493, 1.8140



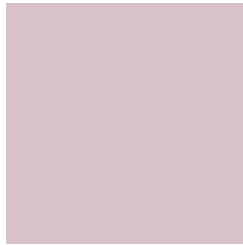
30.2738, 52.6214, 13.5420



7.8011, 13.7449, 2.0545

Previews

White Background



This preview shows how the HunterLab color 75.5392, 5.1222, 3.7474 looks on a white background.

Color Contrast Check

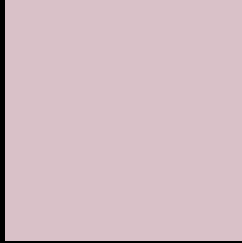
Large Text (above 18pt) WCAG AA × Fail

Any Text WCAG AA × Fail

Large Text (above 18pt) WCAG AAA × Fail

Any Text WCAG AAA × Fail

Black Background



This preview shows how the HunterLab color 75.5392, 5.1222, 3.7474 looks on a black background.

Color Contrast Check

Large Text (above 18pt) WCAG AA ✓ Pass

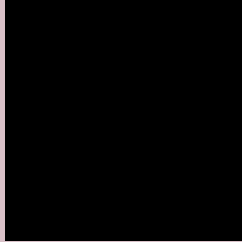
Any Text WCAG AA ✓ Pass

Large Text (above 18pt) WCAG AAA ✓ Pass

Any Text WCAG AAA ✓ Pass

If you want to check with other color combinations, try the [Color Contrast Checker](#).

HunterLab 75.5392, 5.1222, 3.7474 Background



This preview shows how black text looks on a background with the HunterLab color 75.5392, 5.1222, 3.7474.



This preview shows how white text looks on a background with the HunterLab color 75.5392, 5.1222,

3.7474.

Color Blindness Simulation

Color vision deficiency is a very complex topic, and I could not describe the different causes any better than Wikipedia does, so if you want to learn more, you should check out their [article about color blindness](#).

Dichromacy



Original Color

75.5392, 5.1222, 3.7474

Protanopia

75.5761, -2.2120, 2.2063

Deuteranopia

75.6409, 5.4633, 3.8737



Tritanopia

75.5710, 7.1703, 0.3782

Trichromacy



Original Color

75.5392, 5.1222, 3.7474

Protanomaly

75.5046, 0.5698, 2.6581

Deuteranomaly

75.6409, 5.4633, 3.8737

Tritanomaly

75.4747, 6.6570, 1.7472

Monochromacy



Original Color

75.5392, 5.1222, 3.7474

Achromatopsia

76.4250, -4.0778, 4.1523

Achromatomaly

76.0727, -0.6267, 3.7971

CSS Examples

Text

The CSS property to change the color of the text to HunterLab 75.5392, 5.1222, 3.7474 is called "color". The color property can be set on classes, ids or directly on the HTML element.

This example shows how text in the color `rgb(217, 193, 200)` looks like.

```
.text, #text, p{  
    color:rgb(217, 193, 200)  
}
```

If you want to add a text shadow in that color use the text-shadow property, you can generate a text shadow directly with our [CSS Text Shadow Generator](#).

Here you see how black text with a 4 pixel rgb(217, 193, 200) colored shadow looks like.

```
.shadow{ text-shadow: 4px 4px 2px rgb(217, 193, 200) }
```

Border

The CSS property to change the border of an element to HunterLab 75.5392, 5.1222, 3.7474 is called "border". The border property can be set on classes, ids or directly on the HTML element.

This example shows the color as border, it can be applied via the CSS property "border" or "border-color".

```
.border, #border, table{ border:4px solid rgb(217, 193, 200) }
```


If only the border color should be changed use the property `border-color`.

```
.border{ border-color:rgb(217, 193, 200) }
```

If you want to add a box shadow in that color use:

Here you see how a box with a 4 pixel `rgb(217, 193, 200)` colored shadow looks like.

```
.boxshadow{ -moz-box-shadow:4px 4px 4px  
4px rgb(217, 193, 200); -webkit-box-  
shadow:4px 4px 4px 4px rgb(217, 193, 200);  
box-shadow:4px 4px 4px 4px rgb(217, 193,  
200) }
```

Background

The CSS property to change the background color of an element to HunterLab 75.5392, 5.1222, 3.7474 is called "background". The background property can be set on classes, ids or directly on the HTML element.

```
.background, #background, body{  
background: rgb(217, 193, 200) }
```

If only the background color should be changed can be used:

```
.background{ background-color: rgb(217,  
193, 200) }
```

This example shows the color as background, it is applied via the CSS property "background".

To optimize and compress your CSS code, you can use our [online CSS compressor and optimizer](#) based on csstidy. If you want to create a linear or radial gradient as background or border, check our [CSS Gradient Generator](#).

Hey! You found this booklet interesting? Support Converting Colors with the new Membership Option!

The pro membership hides all ads, plus gives you double the colors in the color bucket, and more awesome pro features!

[Learn more, Memberships starting at \\$2.50/m!](#)

**Follow me
on Twitter!**

@ConvertingColor