

Converting Colors

HunterLab(75.5622, 7.1093,
9.8838)

Have a look what the booklet for
HunterLab(75.5622, 7.1093, 9.8838)
contains.

HunterLab(75.5104, 7.2437, 9.7413)	3
<i>Conversions</i>	4
<i>Details</i>	6
<i>Harmonies</i>	12
<i>Previews</i>	24
<i>Color Blindness Simulation</i>	28
<i>CSS Examples</i>	31

Color

**HunterLab(75.5104, 7.2437,
9.7413)**

Conversions

Conversions Part 1

Format	Color
Hex	E2BFBB
RGB	226, 191, 187
RGB Percent	89%, 75%, 73%
CMY	0.1137, 0.2510, 0.2667
CMYK	0.00, 0.15, 0.17, 0.11
HSL	6°, 40%, 81%
HSV	6°, 17%, 89%
XYZ	58.9645, 57.0182, 54.9115
YIQ	201.0090, 22.1440, 6.1760

Conversions

Conversions Part 2

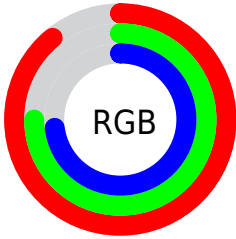
Format	Color
R _Y B	226, 191, 187
Decimal	14860219
CIE Lab	80.19, 11.82, 6.65
CIE LCh	80, 13.564, 29.358
Yxy	57.0208, 0.3450, 0.3337
Android (android.graphics.Color)	4293050299 (0xFFE2BFBB)
YUV	201.0090, -6.9064, 21.9171
Hunter-Lab	75.5104, 7.2437, 9.7413

Details

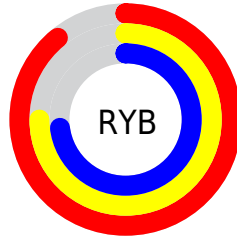
The HunterLab color $75.5104, 7.2437, 9.7413$ is a light color, and the websafe version is hex FFCCCC . A complement of this color would be $82.6419, -14.2896, -0.9474$, and the grayscale version is $76.4522, -4.0793, 4.1538$.

A 20% lighter version of the original color is $97.0838, -3.1736, 7.9825$, and $53.3331, 6.9703, 7.9123$ is the 20% darker color. If you saturate the color by 10%, you get $69.1997, 14.6140, 12.6410$, and if you desaturate by 10%, it is $82.1782, 0.2266, 6.8387$.

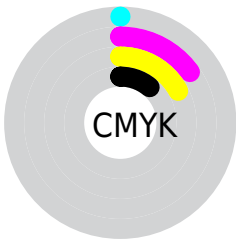
Distribution



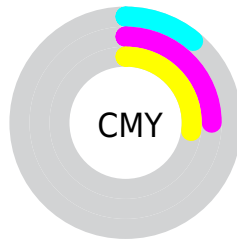
- Red (89%)
- Green (75%)
- Blue (73%)



- Red (89%)
- Yellow (75%)
- Blue (73%)



- Cyan (0%)
- Magenta (15%)
- Yellow (17%)
- Black (11%)





- Cyan (11%)
- Magenta (25%)
- Yellow (27%)

Brightness & Saturation Gradients


These gradients show how the HunterLab color 75.5104, 7.2437, 9.7413 changes by changing the brightness by 10 percent. The first figure shows a shift by +10% for each color and the second figure -10%.

Similar to the brightness gradients but the following saturation gradients show a change of the HunterLab color 75.5104, 7.2437, 9.7413 by changing the saturation by 10% instead.


 75.5104, 7.2437,
9.7413

 75.5104, 7.2437,
9.7413


203.3537, 4.6113,
19.0599

 64.0484, 7.2865,
8.7926


 100.2474, 6.9768,
11.6902

 53.2318, 7.2656,
7.8569


113.4637, 6.7667,
12.6896

 43.1037, 7.1705,
6.9328


127.2146, 6.5097,
13.7066

 33.7145, 6.9908,
6.0166

141.4801, 6.2087,
14.7415

 25.1277, 6.7120,
5.1016

156.2421, 5.8663,
15.7942

 17.4268, 6.3136,
4.1759

171.4847, 5.4847,

 10.7287, 5.7652,

16.8649

3.2907

187.1930, 5.0658,
17.9535

■ 1.4552, 35.3239,
1.0186

0.0000, NaN, NaN

■ 75.5104, 7.2437,
9.7413

■ 75.5104, 7.2437,
9.7413

■ 69.1997, 14.6140,
12.6410

■ 82.1782, 0.2266,
6.8387

■ 63.3018, 22.3442,
15.5014

■ 89.1488, -6.4554,
3.9463

■ 57.8923, 30.3796,
18.2658

■ 96.3843, -12.8412,
1.0725

■ 53.0584, 38.5780,
20.8409

■ 97.4212, -14.4265,
2.2002

■ 48.8973, 46.6635,
23.0915

■ 45.5061, 54.1978,
24.8482

■ 42.9618, 60.6134,
25.9476

■ 41.2915, 65.3471,
26.3319

■ 40.9753, 66.2771,
26.4091

Harmonies

Analogous

The Analogous color harmony consists of three colors that are next to each other on the color wheel.



75.5121, 8.9557, 3.9763



75.5104, 7.2437, 9.7413



75.5121, 2.4828, 13.6942

Triad

The Triadic color harmony groups three colors that are evenly spaced from another and form a triangle on the color wheel.



75.5121, 7.2413, 9.7425



75.5121, -14.5497, 9.9560



75.5121, -4.1739, -8.8549

Complementary

The Complementary color scheme is a pair of colors which are on the opposite of each other on the color wheel.



75.5104, 7.2437, 9.7413



82.6419, -14.2896, -0.9474

Split Complementary

Split-complementary colors differ from the complementary color scheme. The scheme consists of three colors, the original color and two neighbors of the complement color.



75.5121, -10.3354, -6.9219



75.5104, 7.2437, 9.7413



75.5121, -16.1994, 4.2442

Square

The Square scheme is like the rectangle color scheme, but the four colors are evenly spaced on the color wheel.



75.5121, 7.2413, 9.7425



75.5121, -10.0994, 13.8098



75.5121, -14.6827, -1.9922



75.5121, 2.2308, -7.0755

Rectangle

The Rectangle color scheme consists of four colors that form a rectangle on the color wheel.



75.5104, 7.2437, 9.7413



75.5121, -1.6972, 14.9462



75.5121, -14.6827, -1.9922



75.5121, -6.3411, -8.6154

Sweetspot

The Sweet Spot groups the original color and five complimentary colors.



75.5121, 7.2413, 9.7425



95.9803, -1.4749, 7.1030



75.4913, 15.2776, -7.5468



44.1466, -0.4279, 3.3949

0.0000, NaN, NaN



46.2646, -2.4686, 2.5136

Same Dimension

The Same Dimension uses a secret algorithm to generate beautiful new colors.



75.5121, 7.2413, 9.7425



83.7250, 11.5375, 12.4648



81.2701, -2.7969, 15.7302



37.3173, 0.7997, 3.4556



31.0789, 49.6287, 20.0195



8.6450, 11.5946, 5.5300

Inverse Universe

The Inverse Universe completely reimagines the original color for something new.



82.6419, -14.2896, -0.9474



93.6814, -18.5807, -2.4755



76.5374, -4.5427, -8.6555



39.1398, -4.6919, 0.7259



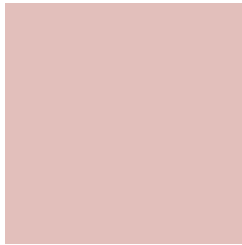
52.4854, -23.6985, -14.4439



14.0701, -6.5557, -3.4344

Previews

White Background



This preview shows how the HunterLab color 75.5104, 7.2437, 9.7413 looks on a white background.

Color Contrast Check

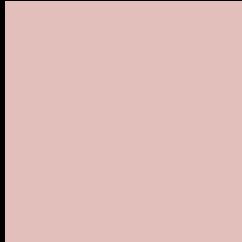
Large Text (above 18pt) WCAG AA × Fail

Any Text WCAG AA × Fail

Large Text (above 18pt) WCAG AAA × Fail

Any Text WCAG AAA × Fail

Black Background



This preview shows how the HunterLab color 75.5104, 7.2437, 9.7413 looks on a black background.

Color Contrast Check

Large Text (above 18pt) WCAG AA ✓ Pass

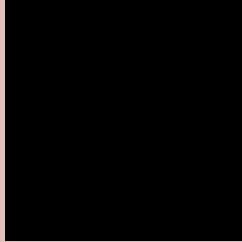
Any Text WCAG AA ✓ Pass

Large Text (above 18pt) WCAG AAA ✓ Pass

Any Text WCAG AAA ✓ Pass

If you want to check with other color combinations, try the [Color Contrast Checker](#).

HunterLab 75.5104, 7.2437, 9.7413 Background



This preview shows how black text looks on a background with the HunterLab color 75.5104, 7.2437, 9.7413.



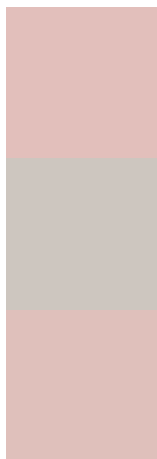
This preview shows how white text looks on a background with the HunterLab color 75.5104, 7.2437, 9.7413.

9.7413.

Color Blindness Simulation

Color vision deficiency is a very complex topic, and I could not describe the different causes any better than Wikipedia does, so if you want to learn more, you should check out their [article about color blindness](#).

Dichromacy



Original Color

75.5104, 7.2437, 9.7413

Protanopia

75.5837, -2.9138, 7.8586

Deuteranopia

75.4819, 5.6584, 9.6820



Tritanopia

75.6313, 11.5472, 2.5136

Trichromacy



Original Color

75.5104, 7.2437, 9.7413

Protanomaly

75.4281, 1.1157, 8.2056

Deuteranomaly

75.5873, 6.0115, 9.8047

Tritanomaly

75.6234, 9.6832, 5.3540

Monochromacy



Original Color

75.5104, 7.2437, 9.7413

Achromatopsia

76.4250, -4.0778, 4.1523

Achromatomaly

75.9076, 0.0436, 5.9831

CSS Examples

Text

The CSS property to change the color of the text to HunterLab 75.5104, 7.2437, 9.7413 is called "color". The color property can be set on classes, ids or directly on the HTML element.

This example shows how text in the color `rgb(226, 191, 187)` looks like.

```
.text, #text, p{  
    color:rgb(226, 191, 187)  
}
```

If you want to add a text shadow in that color use the text-shadow property, you can generate a text shadow directly with our [CSS Text Shadow Generator](#).

Here you see how black text with a 4 pixel rgb(226, 191, 187) colored shadow looks like.

```
.shadow{ text-shadow: 4px 4px 2px rgb(226, 191, 187) }
```

Border

The CSS property to change the border of an element to HunterLab 75.5104, 7.2437, 9.7413 is called "border". The border property can be set on classes, ids or directly on the HTML element.

This example shows the color as border, it can be applied via the CSS property "border" or "border-color".

```
.border, #border, table{ border:4px solid rgb(226, 191, 187) }
```


If only the border color should be changed use the property border-color.

```
.border{ border-color:rgb(226, 191, 187) }
```

If you want to add a box shadow in that color use:

Here you see how a box with a 4 pixel rgb(226, 191, 187) colored shadow looks like.

```
.boxshadow{ -moz-box-shadow:4px 4px 4px  
4px rgb(226, 191, 187); -webkit-box-  
shadow:4px 4px 4px 4px rgb(226, 191, 187);  
box-shadow:4px 4px 4px 4px rgb(226, 191,  
187) }
```

Background

The CSS property to change the background color of an element to HunterLab 75.5104, 7.2437, 9.7413 is called "background". The background property can be set on classes, ids or directly on the HTML element.

```
.background, #background, body{  
background: rgb(226, 191, 187) }
```

If only the background color should be changed can be used:

```
.background{ background-color: rgb(226,  
191, 187) }
```

This example shows the color as background, it is applied via the CSS property "background".

To optimize and compress your CSS code, you can use our [online CSS compressor and optimizer](#) based on csstidy. If you want to create a linear or radial gradient as background or border, check our [CSS Gradient Generator](#).

Hey! You found this booklet interesting? Support Converting Colors with the new Membership Option!

The pro membership hides all ads, plus gives you double the colors in the color bucket, and more awesome pro features!

[Learn more, Memberships starting at \\$2.50/m!](#)

**Follow me
on Twitter!**

@ConvertingColor