

Converting Colors

HunterLab(75.6316, 3.6974,
8.9728)

Have a look what the booklet for
HunterLab(75.6316, 3.6974, 8.9728)
contains.

HunterLab(75.7085, 3.5286, 9.0096)	3
<i>Conversions</i>	4
<i>Details</i>	6
<i>Harmonies</i>	12
<i>Previews</i>	24
<i>Color Blindness Simulation</i>	28
<i>CSS Examples</i>	31

Color

**HunterLab(75.7085, 3.5286,
9.0096)**

Conversions

Conversions Part 1

Format	Color
Hex	DBC2BD
RGB	219, 194, 189
RGB Percent	86%, 76%, 74%
CMY	0.1412, 0.2392, 0.2588
CMYK	0.00, 0.11, 0.14, 0.14
HSL	10°, 29%, 80%
HSV	10°, 14%, 86%
XYZ	57.6905, 57.3178, 56.1670
YIQ	200.9050, 16.5050, 3.7450

Conversions

Conversions Part 2

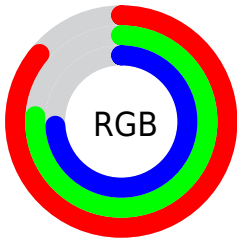
Format	Color
R _Y B	219, 195, 189
Decimal	14402237
CIE Lab	80.36, 8.00, 5.74
CIE LCh	80, 9.847, 35.627
Yxy	57.3203, 0.3370, 0.3349
Android (android.graphics.Color)	4292592317 (0xFFDBC2BD)
YUV	200.9050, -5.8692, 15.8693
Hunter-Lab	75.7085, 3.5286, 9.0096

Details

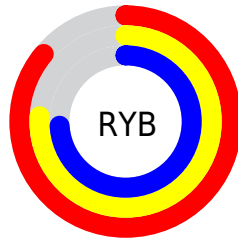
The HunterLab color $75.7085, 3.5286, 9.0096$ is a light color, and the websafe version is hex `CCCCCC`. A complement of this color would be $80.0157, -11.0447, -0.5473$, and the grayscale version is $76.4052, -4.0768, 4.1512$.

A 20% lighter version of the original color is $98.4108, -4.9506, 8.5082$, and $53.3163, 4.2284, 7.0249$ is the 20% darker color. If you saturate the color by 10%, you get $69.8641, 9.7682, 12.1533$, and if you desaturate by 10%, it is $81.8362, -2.3834, 5.7830$.

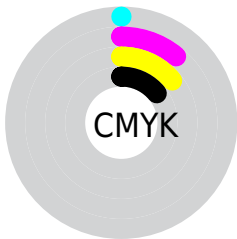
Distribution



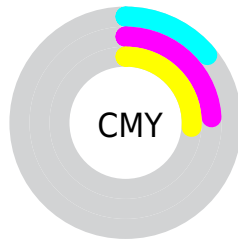
- Red (86%)
- Green (76%)
- Blue (74%)



- Red (86%)
- Yellow (76%)
- Blue (74%)



- Cyan (0%)
- Magenta (11%)
- Yellow (14%)
- Black (14%)




- Cyan (14%)
- Magenta (24%)
- Yellow (26%)

Brightness & Saturation Gradients


These gradients show how the HunterLab color 75.7085, 3.5286, 9.0096 changes by changing the brightness by 10 percent. The first figure shows a shift by +10% for each color and the second figure -10%.


Similar to the brightness gradients but the following saturation gradients show a change of the HunterLab color 75.7085, 3.5286, 9.0096 by changing the saturation by 10% instead.


 75.7085, 3.5286,
9.0096

 75.7085, 3.5286,
9.0096


203.6292, -0.4455,
17.9995

 64.2359, 3.7515,
8.1069


 100.4651, 2.9254,
10.8741

 53.4081, 3.9201,
7.2202

113.6906, 2.5571,
11.8344

 43.2680, 4.0257,
6.3492


127.4503, 2.1475,
12.8140

 33.8659, 4.0597,
5.4910

141.7242, 1.6991,
13.8128

 25.2650, 4.0105,
4.6407

156.4945, 1.2139,
14.8310

 17.5484, 3.8613,
3.7891

171.7450, 0.6937,

 10.8322, 3.5855,

15.8682

2.9427

187.4610, 0.1401,
16.9244

■ 1.9948, 17.3783,
1.3963

0.0000, NaN, NaN

■ 75.7085, 3.5286,
9.0096

■ 75.7085, 3.5286,
9.0096

■ 69.8641, 9.7682,
12.1533

■ 81.8362, -2.3834,
5.7830

■ 64.3412, 16.3610,
15.1731

■ 88.2067, -7.9919,
2.4942

■ 59.1942, 23.2979,
18.0146

■ 94.7924, -13.3339,
-0.8400

■ 54.4853, 30.5247,
20.5979

■ 96.8505, -16.4719,
1.4734

■ 50.2859, 37.9097,
22.8148

■ 46.6730, 45.2120,
24.5334

■ 43.7200, 52.0649,
25.6204

■ 41.4820, 58.0033,
25.9927

■ 40.4403, 61.0317,
25.9876

Harmonies

Analogous

The Analogous color harmony consists of three colors that are next to each other on the color wheel.



75.7102, 5.2645, 4.9683



75.7085, 3.5286, 9.0096



75.7102, -0.2365, 11.6177

Triad

The Triadic color harmony groups three colors that are evenly spaced from another and form a triangle on the color wheel.



75.7102, 3.5263, 9.0108



75.7102, -12.1872, 7.6207



75.7102, -3.1459, -5.0481

Complementary

The Complementary color scheme is a pair of colors which are on the opposite of each other on the color wheel.



75.7085, 3.5286, 9.0096



80.0157, -11.0447, -0.5473

Split Complementary

Split-complementary colors differ from the complementary color scheme. The scheme consists of three colors, the original color and two neighbors of the complement color.



75.7102, -7.7773, -4.2303



75.7085, 3.5286, 9.0096



75.7102, -12.9230, 3.2640

Square

The Square scheme is like the rectangle color scheme, but the four colors are evenly spaced on the color wheel.



75.7102, 3.5263, 9.0108



75.7102, -9.2924, 10.8505



75.7102, -11.3277, -1.1182



75.7102, 1.3519, -3.2889

Rectangle

The Rectangle color scheme consists of four colors that form a rectangle on the color wheel.



75.7085, 3.5286, 9.0096



75.7102, -3.3458, 12.2847



75.7102, -11.3277, -1.1182



75.7102, -4.7392, -5.0667

Sweetspot

The Sweet Spot groups the original color and five complimentary colors.



75.7102, 3.5263, 9.0108



96.9831, -2.6019, 7.0012



75.0407, 10.3291, -3.8450



44.6088, -0.9629, 3.3749

0.0000, NaN, NaN



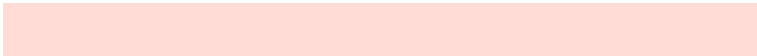
46.2646, -2.4686, 2.5136

Same Dimension

The Same Dimension uses a secret algorithm to generate beautiful new colors.



75.7102, 3.5263, 9.0108



88.2276, 5.9609, 11.6274



80.2096, -4.1715, 13.7635



36.6069, 0.4522, 3.5737



31.3127, 46.4427, 20.1078



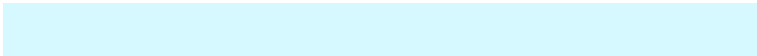
8.6297, 9.8291, 5.4897

Inverse Universe

The Inverse Universe completely reimagines the original color for something new.



80.0157, -11.0447, -0.5473



94.2342, -14.3816, -1.7102



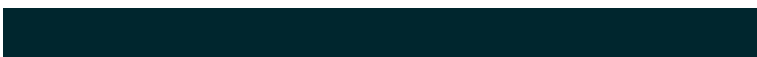
75.3531, -3.4845, -6.3607



38.0007, -4.2604, 0.4805



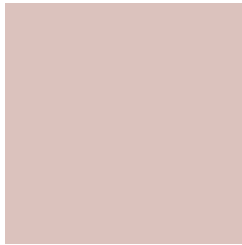
48.0874, -18.7207, -19.6925



12.6426, -5.2931, -4.3758

Previews

White Background



This preview shows how the HunterLab color 75.7085, 3.5286, 9.0096 looks on a white background.

Color Contrast Check

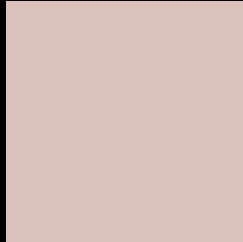
Large Text (above 18pt) WCAG AA × Fail

Any Text WCAG AA × Fail

Large Text (above 18pt) WCAG AAA × Fail

Any Text WCAG AAA × Fail

Black Background



This preview shows how the HunterLab color 75.7085, 3.5286, 9.0096 looks on a black background.

Color Contrast Check

Large Text (above 18pt) WCAG AA ✓ Pass

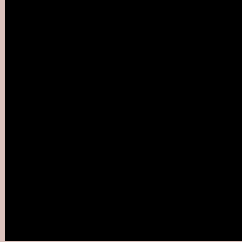
Any Text WCAG AA ✓ Pass

Large Text (above 18pt) WCAG AAA ✓ Pass

Any Text WCAG AAA ✓ Pass

If you want to check with other color combinations, try the [Color Contrast Checker](#).

HunterLab 75.7085, 3.5286, 9.0096 Background



This preview shows how black text looks on a background with the HunterLab color 75.7085, 3.5286, 9.0096.



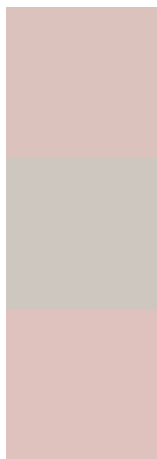
This preview shows how white text looks on a background with the HunterLab color 75.7085, 3.5286,

9.0096.

Color Blindness Simulation

Color vision deficiency is a very complex topic, and I could not describe the different causes any better than Wikipedia does, so if you want to learn more, you should check out their [article about color blindness](#).

Dichromacy



Original Color

75.7085, 3.5286, 9.0096

Protanopia

75.9156, -3.2613, 7.7740

Deuteranopia

75.8301, 5.4427, 9.1785



Tritanopia

75.5579, 8.5510, 0.8878

Trichromacy



Original Color

75.7085, 3.5286, 9.0096

Protanomaly

75.7600, -0.7581, 8.0950

Deuteranomaly

75.7256, 5.0920, 9.0561

Tritanomaly

75.5546, 6.6728, 3.7928

Monochromacy



Original Color

75.7085, 3.5286, 9.0096

Achromatopsia

76.4250, -4.0778, 4.1523

Achromatomaly

76.0456, -0.9643, 5.6576

CSS Examples

Text

The CSS property to change the color of the text to HunterLab 75.7085, 3.5286, 9.0096 is called "color". The color property can be set on classes, ids or directly on the HTML element.

This example shows how text in the color `rgb(219, 194, 189)` looks like.

```
.text, #text, p{  
    color:rgb(219, 194, 189)  
}
```

If you want to add a text shadow in that color use the text-shadow property, you can generate a text shadow directly with our [CSS Text Shadow Generator](#).

Here you see how black text with a 4 pixel rgb(219, 194, 189) colored shadow looks like.

```
.shadow{ text-shadow: 4px 4px 2px rgb(219, 194, 189) }
```

Border

The CSS property to change the border of an element to HunterLab 75.7085, 3.5286, 9.0096 is called "border". The border property can be set on classes, ids or directly on the HTML element.

This example shows the color as border, it can be applied via the CSS property "border" or "border-color".

```
.border, #border, table{ border:4px solid rgb(219, 194, 189) }
```


If only the border color should be changed use the property `border-color`.

```
.border{ border-color:rgb(219, 194, 189) }
```

If you want to add a box shadow in that color use:

Here you see how a box with a 4 pixel `rgb(219, 194, 189)` colored shadow looks like.

```
.boxshadow{ -moz-box-shadow:4px 4px 4px  
4px rgb(219, 194, 189); -webkit-box-  
shadow:4px 4px 4px 4px rgb(219, 194, 189);  
box-shadow:4px 4px 4px 4px rgb(219, 194,  
189) }
```

Background

The CSS property to change the background color of an element to HunterLab 75.7085, 3.5286, 9.0096 is called "background". The background property can be set on classes, ids or directly on the HTML element.

```
.background, #background, body{  
background: rgb(219, 194, 189) }
```

If only the background color should be changed can be used:

```
.background{ background-color: rgb(219,  
194, 189) }
```

This example shows the color as background, it is applied via the CSS property "background".

To optimize and compress your CSS code, you can use our [online CSS compressor and optimizer](#) based on csstidy. If you want to create a linear or radial gradient as background or border, check our [CSS Gradient Generator](#).

Hey! You found this booklet interesting? Support Converting Colors with the new Membership Option!

The pro membership hides all ads, plus gives you double the colors in the color bucket, and more awesome pro features!

[Learn more, Memberships starting at \\$2.50/m!](#)

**Follow me
on Twitter!**

@ConvertingColor