

Converting Colors

HunterLab(75.6554, 2.0427,
6.6142)

Have a look what the booklet for
HunterLab(75.6554, 2.0427, 6.6142)
contains.

| | |
|---|----|
| HunterLab(75.6448, 2.0880, 6.6445) | 3 |
| <i>Conversions</i> | 4 |
| <i>Details</i> | 6 |
| <i>Harmonies</i> | 12 |
| <i>Previews</i> | 24 |
| <i>Color Blindness Simulation</i> | 28 |
| <i>CSS Examples</i> | 31 |

Color

**HunterLab(75.6448, 2.0880,
6.6445)**

Conversions

Conversions Part 1

| Format | Color |
|---------------|---------------------------|
| Hex | D6C3C2 |
| RGB | 214, 195, 194 |
| RGB Percent | 84%, 76%, 76% |
| CMY | 0.1608, 0.2353, 0.2392 |
| CMYK | 0.00, 0.09, 0.09, 0.16 |
| HSL | 3°, 20%, 80% |
| HSV | 3°, 9%, 84% |
| XYZ | 56.9842, 57.2214, 59.0803 |
| YIQ | 200.5670, 11.6450, 3.7170 |

Conversions

Conversions Part 2

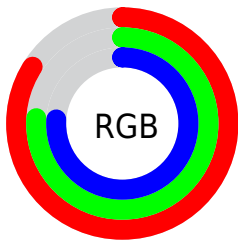
| Format | Color |
|-------------------------------------|-------------------------------|
| R _Y B | 214, 195, 194 |
| Decimal | 14074818 |
| CIE Lab | 80.31, 6.50, 2.92 |
| CIE LCh | 80, 7.127, 24.154 |
| Yxy | 57.2239, 0.3288, 0.3302 |
| Android (android.graphics.Color) | 4292264898 (0xFFD6C3C2) |
| YUV | 200.5670, -3.2375, 11.7807 |
| Hunter-Lab | 75.6448, 2.0880, 6.6445 |

Details

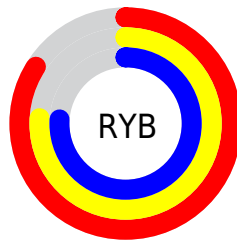
The HunterLab color $75.6448, 2.0880, 6.6445$ is a light color, and the websafe version is hex `CCCCCC`. A complement of this color would be $79.9448, -10.0001, 1.9044$, and the grayscale version is $76.2516, -4.0686, 4.1429$.

A 20% lighter version of the original color is $98.8853, -4.6209, 6.6239$, and $53.2110, 2.6757, 5.1898$ is the 20% darker color. If you saturate the color by 10%, you get $69.1615, 9.3131, 9.0610$, and if you desaturate by 10%, it is $82.4578, -4.8180, 4.3044$.

Distribution



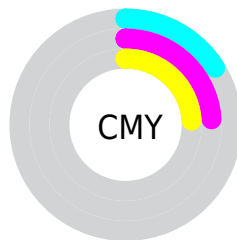
- Red (84%)
- Green (76%)
- Blue (76%)



- Red (84%)
- Yellow (76%)
- Blue (76%)



- Cyan (0%)
- Magenta (9%)
- Yellow (9%)
- Black (16%)



- Cyan (16%)
- Magenta (24%)
- Yellow (24%)

Brightness & Saturation Gradients

These gradients show how the HunterLab color 75.6448, 2.0880, 6.6445 changes by changing the brightness by 10 percent. The first figure shows a shift by +10% for each color and the second figure -10%.

Similar to the brightness gradients but the following saturation gradients show a change of the HunterLab color 75.6448, 2.0880, 6.6445 by changing the saturation by 10% instead.

■ 75.6448, 2.0880,
6.6445

■ 75.6448, 2.0880,
6.6445

203.5406, -2.4145,
14.6256

■ 64.1755, 2.3823,
5.8816

■ 100.3951, 1.3522,
8.2514

■ 53.3514, 2.6259,
5.1440

113.6176, 0.9215,
9.0919

■ 43.2151, 2.8110,
4.4333

127.3745, 0.4518,
9.9566

■ 33.8172, 2.9301,
3.7496

141.6457, -0.0547,
10.8450

■ 25.2209, 2.9728,
3.0926

156.4133, -0.5961,
11.7566

■ 17.5093, 2.9240,
2.4604

171.6613, -1.1708,

■ 10.7989, 2.7596,

12.6909

1.8479

187.3748, -1.7774,
13.6474

■ 1.8386, 15.3130,
1.2870

0.0000, NaN, NaN

■ 75.6448, 2.0880,
6.6445

■ 75.6448, 2.0880,
6.6445

■ 69.1615, 9.3131,
9.0610

■ 82.4578, -4.8180,
4.3044

■ 63.0596, 16.8782,
11.5439

■ 89.5504, -11.4308,
2.0343

■ 57.4111, 24.7568,
14.0718

■ 96.4553, -17.8957,
0.9677

■ 52.3018, 32.8496,
16.5931

■ 47.8321, 40.9342,
19.0135

■ 44.1095, 48.6187,
21.1857

■ 41.2318, 55.3417,
22.9207

■ 39.2580, 60.4825,
24.0409

■ 38.1628, 63.5807,
24.5664

Harmonies

Analogous

The Analogous color harmony consists of three colors that are next to each other on the color wheel.



75.6465, 2.6482, 3.4744



75.6448, 2.0880, 6.6445



75.6465, -0.1305, 9.0394

Triad

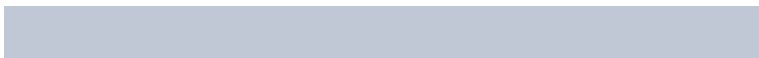
The Triadic color harmony groups three colors that are evenly spaced from another and form a triangle on the color wheel.



75.6465, 2.0859, 6.6457



75.6465, -9.3242, 7.7081



75.6465, -4.7124, -2.4085

Complementary

The Complementary color scheme is a pair of colors which are on the opposite of each other on the color wheel.



75.6448, 2.0880, 6.6445



79.9448, -10.0001, 1.9044

Split Complementary

Split-complementary colors differ from the complementary color scheme. The scheme consists of three colors, the original color and two neighbors of the complement color.



75.6465, -7.8724, -1.1587



75.6448, 2.0880, 6.6445



75.6465, -10.5043, 4.7552

Square

The Square scheme is like the rectangle color scheme, but the four colors are evenly spaced on the color wheel.



75.6465, 2.0859, 6.6457



75.6465, -6.7262, 9.6333



75.6465, -9.9777, 1.4992



75.6465, -1.3165, -1.8474

Rectangle

The Rectangle color scheme consists of four colors that form a rectangle on the color wheel.



75.6448, 2.0880, 6.6445



75.6465, -2.2271, 9.9203



75.6465, -9.9777, 1.4992



75.6465, -5.8367, -2.1845

Sweetspot

The Sweet Spot groups the original color and five complimentary colors.



75.6465, 2.0859, 6.6457



97.4517, -2.8171, 6.2906



75.9504, 5.8303, -2.2401



44.7731, -0.9892, 3.0170

0.0000, NaN, NaN



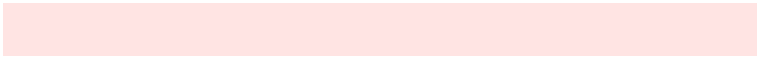
46.2646, -2.4686, 2.5136

Same Dimension

The Same Dimension uses a secret algorithm to generate beautiful new colors.



75.6465, 2.0859, 6.6457



90.8225, 4.0691, 8.6174



78.6477, -3.0425, 9.9318



35.3832, 1.0015, 3.1191



29.7107, 49.2702, 19.1701



7.5394, 11.3014, 4.8436

Inverse Universe

The Inverse Universe completely reimagines the original color for something new.



79.9448, -10.0001, 1.9044



97.0401, -13.4207, 1.7568



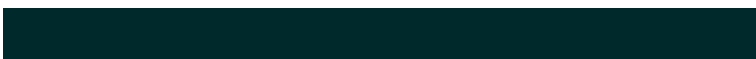
76.8355, -4.9646, -1.8326



37.4113, -4.7011, 0.8819



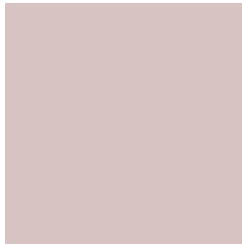
53.7329, -26.5789, -9.7853



13.3228, -6.6814, -2.2291

Previews

White Background



This preview shows how the HunterLab color 75.6448, 2.0880, 6.6445 looks on a white background.

Color Contrast Check

Large Text (above 18pt) WCAG AA × Fail

Any Text WCAG AA × Fail

Large Text (above 18pt) WCAG AAA × Fail

Any Text WCAG AAA × Fail

Black Background



This preview shows how the HunterLab color 75.6448, 2.0880, 6.6445 looks on a black background.

Color Contrast Check

Large Text (above 18pt) WCAG AA ✓ Pass

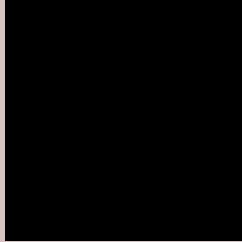
Any Text WCAG AA ✓ Pass

Large Text (above 18pt) WCAG AAA ✓ Pass

Any Text WCAG AAA ✓ Pass

If you want to check with other color combinations, try the [Color Contrast Checker](#).

HunterLab 75.6448, 2.0880, 6.6445 Background



This preview shows how black text looks on a background with the HunterLab color 75.6448, 2.0880, 6.6445.



This preview shows how white text looks on a background with the HunterLab color 75.6448, 2.0880,

Color Blindness Simulation

Color vision deficiency is a very complex topic, and I could not describe the different causes any better than Wikipedia does, so if you want to learn more, you should check out their [article about color blindness](#).

Dichromacy



Original Color

75.6448, 2.0880, 6.6445

Protanopia

75.6380, -2.4296, 5.6282

Deuteranopia

75.6641, 5.1776, 6.7207



Tritanopia

75.6921, 6.1420, 0.0053

Trichromacy



Original Color

75.6448, 2.0880, 6.6445

Protanomaly

75.6852, -0.7791, 6.1777

Deuteranomaly

75.7523, 3.9680, 6.8003

Tritanomaly

75.7248, 4.4257, 2.5012

Monochromacy



Original Color

75.6448, 2.0880, 6.6445

Achromatopsia

76.4250, -4.0778, 4.1523

Achromatomaly

76.1878, -1.9625, 5.3356

CSS Examples

Text

The CSS property to change the color of the text to HunterLab 75.6448, 2.0880, 6.6445 is called "color". The color property can be set on classes, ids or directly on the HTML element.

This example shows how text in the color `rgb(214, 195, 194)` looks like.

```
.text, #text, p{  
    color:rgb(214, 195, 194)  
}
```

If you want to add a text shadow in that color use the text-shadow property, you can generate a text shadow directly with our [CSS Text Shadow Generator](#).

Here you see how black text with a 4 pixel rgb(214, 195, 194) colored shadow looks like.

```
.shadow{ text-shadow: 4px 4px 2px rgb(214, 195, 194) }
```

Border

The CSS property to change the border of an element to HunterLab 75.6448, 2.0880, 6.6445 is called "border". The border property can be set on classes, ids or directly on the HTML element.

This example shows the color as border, it can be applied via the CSS property "border" or "border-color".

```
.border, #border, table{ border:4px solid rgb(214, 195, 194) }
```


If only the border color should be changed use the property `border-color`.

```
.border{ border-color:rgb(214, 195, 194) }
```

If you want to add a box shadow in that color use:

Here you see how a box with a 4 pixel `rgb(214, 195, 194)` colored shadow looks like.

```
.boxshadow{ -moz-box-shadow:4px 4px 4px  
4px rgb(214, 195, 194); -webkit-box-  
shadow:4px 4px 4px 4px rgb(214, 195, 194);  
box-shadow:4px 4px 4px 4px rgb(214, 195,  
194) }
```

Background

The CSS property to change the background color of an element to HunterLab 75.6448, 2.0880, 6.6445 is called "background". The background property can be set on classes, ids or directly on the HTML element.

```
.background, #background, body{  
background: rgb(214, 195, 194) }
```

If only the background color should be changed can be used:

```
.background{ background-color: rgb(214,  
195, 194) }
```

This example shows the color as background, it is applied via the CSS property "background".

To optimize and compress your CSS code, you can use our [online CSS compressor and optimizer](#) based on csstidy. If you want to create a linear or radial gradient as background or border, check our [CSS Gradient Generator](#).

Hey! You found this booklet interesting? Support Converting Colors with the new Membership Option!

The pro membership hides all ads, plus gives you double the colors in the color bucket, and more awesome pro features!

[Learn more, Memberships starting at \\$2.50/m!](#)

**Follow me
on Twitter!**

@ConvertingColor