

# Converting Colors

HunterLab(75.7333, 2.2655,  
10.1424)

Have a look what the booklet for  
HunterLab(75.7333, 2.2655,  
10.1424) contains.

<b>HunterLab(75.8161, 2.2078, 10.4277)</b> .....	3
<b><i>Conversions</i></b> .....	4
<b><i>Details</i></b> .....	6
<b><i>Harmonies</i></b> .....	12
<b><i>Previews</i></b> .....	24
<b><i>Color Blindness Simulation</i></b> .....	28
<b><i>CSS Examples</i></b> .....	31

# Color

**HunterLab(75.8161, 2.2078,  
10.4277)**

# Conversions

## Conversions Part 1

<b>Format</b>	<b>Color</b>
Hex	DAC3BA
RGB	218, 195, 186
RGB Percent	85%, 76%, 73%
CMY	0.1451, 0.2353, 0.2706
CMYK	0.00, 0.11, 0.15, 0.15
HSL	17°, 30%, 79%
HSV	17°, 15%, 85%
XYZ	57.2915, 57.4808, 54.5298
YIQ	200.8510, 16.5970, 2.0770

# Conversions

## Conversions Part 2

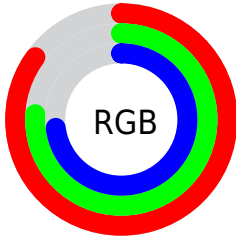
<b>Format</b>	<b>Color</b>
R <sub>Y</sub> B	218, 199, 186
Decimal	14336954
CIE Lab	80.45, 6.63, 7.47
CIE LCh	80, 9.987, 48.389
Yxy	57.4834, 0.3384, 0.3395
Android (android.graphics.Color)	4292527034 (0xFFDAC3BA)
YUV	200.8510, -7.3215, 15.0397
Hunter-Lab	75.8161, 2.2078, 10.4277

# Details

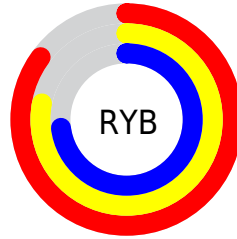
The HunterLab color  $75.8161, 2.2078, 10.4277$  is a light color, and the websafe version is hex `CCCCCC`. A complement of this color would be  $78.1670, -9.5862, -2.3134$ , and the grayscale version is  $76.3881, -4.0759, 4.1503$ .

A 20% lighter version of the original color is  $98.6365, -5.9837, 10.1799$ , and  $53.4132, 2.9824, 8.3334$  is the 20% darker color. If you saturate the color by 10%, you get  $70.6891, 7.1491, 14.1451$ , and if you desaturate by 10%, it is  $81.1636, -2.4114, 6.4716$ .

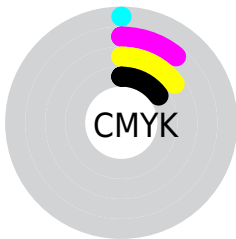
# Distribution



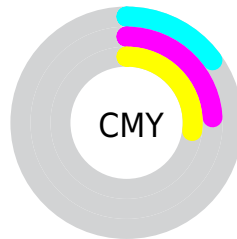
- Red (85%)
- Green (76%)
- Blue (73%)



- Red (85%)
- Yellow (78%)
- Blue (73%)



- Cyan (0%)
- Magenta (11%)
- Yellow (15%)
- Black (15%)



- Cyan (15%)
- Magenta (24%)
- Yellow (27%)

# Brightness & Saturation Gradients

These gradients show how the HunterLab color 75.8161, 2.2078, 10.4277 changes by changing the brightness by 10 percent. The first figure shows a shift by +10% for each color and the second figure -10%.

Similar to the brightness gradients but the following saturation gradients show a change of the HunterLab color 75.8161, 2.2078, 10.4277 by changing the saturation by 10% instead.



■ 75.8161, 2.2078,  
10.4277

■ 75.8161, 2.2078,  
10.4277

203.7788, -2.2537,  
20.0484

■ 64.3377, 2.4965,  
9.4370

■ 100.5834, 1.4821,  
12.4539

■ 53.5039, 2.7343,  
8.4564

113.8138, 1.0562,  
13.4892

■ 43.3573, 2.9134,  
7.4840

127.5783, 0.5912,  
14.5406

■ 33.9482, 3.0261,  
6.5151

141.8568, 0.0893,  
15.6085

■ 25.3397, 3.0620,  
5.5417

156.6316, -0.4477,  
16.6932

■ 17.6146, 3.0058,  
4.5497

171.8864, -1.0182,

■ 10.8885, 2.8336,

17.7947

3.6052

187.6066, -1.6206,  
18.9131

■ 2.2337, 12.8189,  
1.5636

0.0000, NaN, NaN

■ 75.8161, 2.2078,  
10.4277

■ 75.8161, 2.2078,  
10.4277

■ 70.6891, 7.1491,  
14.1451

■ 81.1636, -2.4114,  
6.4716

■ 65.8063, 12.4445,  
17.5677

■ 86.7022, -6.7320,  
2.3141

■ 61.2032, 18.1047,  
20.6303

■ 92.4134, -10.7875,  
-2.0118

■ 56.9190, 24.1204,  
23.2512

■ 96.7706, -16.7592,  
1.3714

■ 52.9984, 30.4441,  
25.3354

■ 49.4898, 36.9715,  
26.7821

■ 46.4421, 43.5221,  
27.5046

■ 43.8988, 49.8283,  
27.4699

■ 42.7545, 52.9374,  
27.2719

# Harmonies

## Analogous

The Analogous color harmony consists of three colors that are next to each other on the color wheel.



75.8178, 4.9497, 6.8566



75.8161, 2.2078, 10.4277



75.8178, -2.1746, 12.2671

# Triad

The Triadic color harmony groups three colors that are evenly spaced from another and form a triangle on the color wheel.



75.8178, 2.2055, 10.4289



75.8178, -12.9183, 5.8806



75.8178, -1.1028, -4.7275

# Complementary

The Complementary color scheme is a pair of colors which are on the opposite of each other on the color wheel.



75.8161, 2.2078, 10.4277



78.1670, -9.5862, -2.3134

# Split Complementary

Split-complementary colors differ from the complementary color scheme. The scheme consists of three colors, the original color and two neighbors of the complement color.



75.8178, -5.9064, -5.0296



75.8161, 2.2078, 10.4277



75.8178, -12.6477, 1.2919

# Square

The Square scheme is like the rectangle color scheme, but the four colors are evenly spaced on the color wheel.



75.8178, 2.2055, 10.4289



75.8178, -10.8571, 9.7528



75.8178, -10.1081, -2.7671



75.8178, 3.0070, -1.9660



# Rectangle

The Rectangle color scheme consists of four colors that form a rectangle on the color wheel.



75.8161, 2.2078, 10.4277



75.8178, -5.3973, 12.3433



75.8178, -10.1081, -2.7671



75.8178, -2.6923, -5.1261

# Sweetspot

The Sweet Spot groups the original color and five complimentary colors.



75.8178, 2.2055, 10.4289



97.3511, -3.2220, 7.4164



73.9261, 10.7701, -2.8813



44.8105, -1.3038, 3.6017

0.0000, NaN, NaN



46.2646, -2.4686, 2.5136

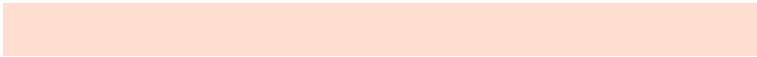


# Same Dimension

The Same Dimension uses a secret algorithm to generate beautiful new colors.



75.8178, 2.2055, 10.4289



88.3849, 4.6431, 14.0354



80.5036, -5.7250, 15.2919



36.9392, -0.1192, 3.9394



33.3302, 40.2762, 21.2430



9.2963, 8.0222, 5.8688

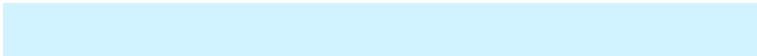


# Inverse Universe

The Inverse Universe completely reimagines the original color for something new.



78.1670, -9.5862, -2.3134



91.8394, -12.7126, -4.7088



73.3815, -1.7367, -8.4058



37.6536, -3.7017, 0.0657



41.9538, -10.1696, -30.4854



11.3285, -3.5227, -6.5550



# Previews

## White Background



This preview shows how the HunterLab color 75.8161, 2.2078, 10.4277 looks on a white background.

## Color Contrast Check

Large Text (above 18pt) WCAG AA × Fail

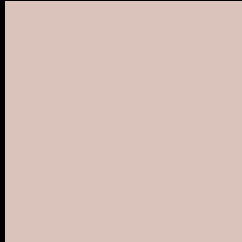
Any Text WCAG AA × Fail

Large Text (above 18pt) WCAG AAA × Fail

Any Text WCAG AAA × Fail



# Black Background



This preview shows how the HunterLab color 75.8161, 2.2078, 10.4277 looks on a black background.

## Color Contrast Check

Large Text (above 18pt) WCAG AA ✓ Pass

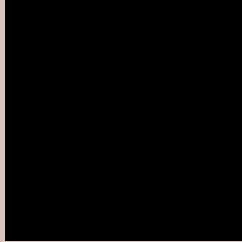
Any Text WCAG AA ✓ Pass

Large Text (above 18pt) WCAG AAA ✓ Pass

Any Text WCAG AAA ✓ Pass

If you want to check with other color combinations, try the [Color Contrast Checker](#).

## HunterLab 75.8161, 2.2078, 10.4277 Background



This preview shows how black text looks on a background with the HunterLab color 75.8161, 2.2078, 10.4277.



This preview shows how white text looks on a background with the HunterLab color 75.8161, 2.2078,



# Color Blindness Simulation

Color vision deficiency is a very complex topic, and I could not describe the different causes any better than Wikipedia does, so if you want to learn more, you should check out their [article about color blindness](#).

## Dichromacy



### Original Color

75.8161, 2.2078, 10.4277

### Protanopia

75.8943, -3.5655, 9.5354

### Deuteranopia

75.8501, 5.3398, 10.5198



## Tritanopia

75.8791, 8.1945, 0.7741

# Trichromacy



## Original Color

75.8161, 2.2078, 10.4277

## Protanomaly

75.9458, -1.8912, 10.0613

## Deuteranomaly

75.9331, 4.1165, 10.5892

## Tritanomaly

75.8150, 5.9847, 4.5660

# Monochromacy



## Original Color

75.8161, 2.2078, 10.4277

## Achromatopsia

76.4250, -4.0778, 4.1523

## Achromatomaly

76.2219, -1.9654, 6.3097

# CSS Examples

## Text

The CSS property to change the color of the text to HunterLab 75.8161, 2.2078, 10.4277 is called "color". The color property can be set on classes, ids or directly on the HTML element.

This example shows how text in the color `rgb(218, 195, 186)` looks like.

```
.text, #text, p{  
    color:rgb(218, 195, 186)  
}
```

If you want to add a text shadow in that color use the text-shadow property, you can generate a text shadow directly with our [CSS Text Shadow Generator](#).

Here you see how black text with a 4 pixel rgb(218, 195, 186) colored shadow looks like.

```
.shadow{ text-shadow: 4px 4px 2px rgb(218, 195, 186) }
```

## Border

The CSS property to change the border of an element to HunterLab 75.8161, 2.2078, 10.4277 is called "border". The border property can be set on classes, ids or directly on the HTML element.

This example shows the color as border, it can be applied via the CSS property "border" or "border-color".

```
.border, #border, table{ border:4px solid rgb(218, 195, 186) }
```



If only the border color should be changed use the property `border-color`.

```
.border{ border-color:rgb(218, 195, 186) }
```

If you want to add a box shadow in that color use:

Here you see how a box with a 4 pixel `rgb(218, 195, 186)` colored shadow looks like.

```
.boxshadow{ -moz-box-shadow:4px 4px 4px 4px rgb(218, 195, 186); -webkit-box-shadow:4px 4px 4px 4px rgb(218, 195, 186); box-shadow:4px 4px 4px 4px rgb(218, 195, 186) }
```

# Background

The CSS property to change the background color of an element to HunterLab 75.8161, 2.2078, 10.4277 is called "background". The background property can be set on classes, ids or directly on the HTML element.

```
.background, #background, body{  
background: rgb(218, 195, 186) }
```

If only the background color should be changed can be used:

```
.background{ background-color: rgb(218,  
195, 186) }
```

This example shows the color as background, it is applied via the CSS property "background".

To optimize and compress your CSS code, you can use our [online CSS compressor and optimizer](#) based on csstidy. If you want to create a linear or radial gradient as background or border, check our [CSS Gradient Generator](#).

Hey! You found this booklet interesting? Support Converting Colors with the new Membership Option!

The pro membership hides all ads, plus gives you double the colors in the color bucket, and more awesome pro features!

**[Learn more, Memberships starting at \\$2.50/m!](#)**

**Follow me  
on Twitter!**

@ConvertingColor