

Converting Colors

HunterLab(75.7444, 2.3302,
4.4668)

Have a look what the booklet for
HunterLab(75.7444, 2.3302, 4.4668)
contains.

HunterLab(75.6967, 2.5659, 4.3672)	3
<i>Conversions</i>	4
<i>Details</i>	6
<i>Harmonies</i>	12
<i>Previews</i>	24
<i>Color Blindness Simulation</i>	28
<i>CSS Examples</i>	31

Color

**HunterLab(75.6967, 2.5659,
4.3672)**

Conversions

Conversions Part 1

Format	Color
Hex	D5C3C7
RGB	213, 195, 199
RGB Percent	84%, 76%, 78%
CMY	0.1647, 0.2353, 0.2196
CMYK	0.00, 0.08, 0.07, 0.16
HSL	347°, 18%, 80%
HSV	347°, 8%, 84%
XYZ	57.2645, 57.2999, 62.0747
YIQ	200.8380, 9.4440, 5.0600

Conversions

Conversions Part 2

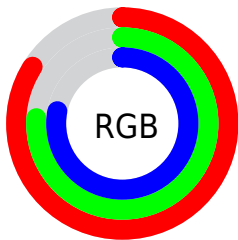
Format	Color
R _Y B	213, 195, 199
Decimal	14009287
CIE Lab	80.35, 7.00, 0.28
CIE LCh	80, 7.009, 2.302
Yxy	57.3024, 0.3242, 0.3244
Android (android.graphics.Color)	4292199367 (0xFFD5C3C7)
YUV	200.8380, -0.9061, 10.6661
Hunter-Lab	75.6967, 2.5659, 4.3672

Details

The HunterLab color $75.6967, 2.5659, 4.3672$ is a light color, and the websafe version is hex `CCCCCC`. A complement of this color would be $79.8721, -10.5794, 4.2519$, and the grayscale version is $76.3583, -4.0743, 4.1487$.

A 20% lighter version of the original color is $99.0459, -3.7429, 4.3328$, and $53.2571, 3.1144, 3.0487$ is the 20% darker color. If you saturate the color by 10%, you get $69.0651, 10.9678, 4.5563$, and if you desaturate by 10%, it is $82.6743, -5.6045, 4.4631$.

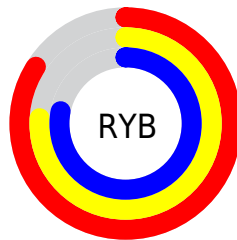
Distribution



Red (84%)

Green (76%)

Blue (78%)



Red (84%)

Yellow (76%)

Blue (78%)

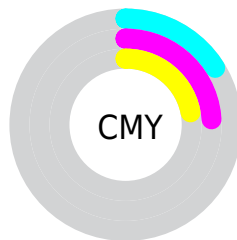


Cyan (0%)

Magenta (8%)

Yellow (7%)

Black (16%)



Cyan (16%)

Magenta (24%)

Yellow (22%)

Brightness & Saturation Gradients

These gradients show how the HunterLab color 75.6967, 2.5659, 4.3672 changes by changing the brightness by 10 percent. The first figure shows a shift by +10% for each color and the second figure -10%.

Similar to the brightness gradients but the following saturation gradients show a change of the HunterLab color 75.6967, 2.5659, 4.3672 by changing the saturation by 10% instead.

■ 75.6967, 2.5659,
4.3672

■ 75.6967, 2.5659,
4.3672

203.6128, -1.7609,
11.4284

■ 64.2247, 2.8366,
3.7306

■ 100.4521, 1.8742,
5.7405

■ 53.3976, 3.0553,
3.1272

113.6770, 1.4643,
6.4719

■ 43.2582, 3.2139,
2.5603

127.4362, 1.0146,
7.2319

■ 33.8569, 3.3047,
2.0323

141.7096, 0.5274,
8.0195

■ 25.2568, 3.3169,
1.5465

156.4794, 0.0046,
8.8337

■ 17.5412, 3.2346,
1.1067

171.7295, -0.5520,

■ 10.8260, 3.0331,

9.6738

0.7184

187.4450, -1.1409,
10.5389

1.9667, 15.4108,
0.7003

0.0000, NaN, NaN

75.6967, 2.5659,
4.3672

75.6967, 2.5659,
4.3672

69.0651, 10.9678,
4.5563

82.6743, -5.6045,
4.4631

62.8351, 19.5922,
5.0836

89.9445, -13.5496,
4.7919

57.0844, 28.3677,
6.0126

96.1706, -19.3395,
3.8136

51.9055, 37.1289,
7.4018

96.3775, -18.1766,
0.8679

■ 47.4061, 45.5631,
9.2862

■ 43.7001, 53.1730,
11.6447

■ 40.8871, 59.3129,
14.3625

■ 39.0171, 63.3705,
17.2151

■ 38.0095, 65.2103,
19.8785

Harmonies

Analogous

The Analogous color harmony consists of three colors that are next to each other on the color wheel.



75.6984, 1.8003, 1.1887



75.6967, 2.5659, 4.3672



75.6984, 1.5315, 7.3518

Triad

The Triadic color harmony groups three colors that are evenly spaced from another and form a triangle on the color wheel.



75.6984, 2.5639, 4.3685



75.6984, -7.4865, 9.1643



75.6984, -7.0417, -1.5631

Complementary

The Complementary color scheme is a pair of colors which are on the opposite of each other on the color wheel.



75.6967, 2.5659, 4.3672



79.8721, -10.5794, 4.2519

Split Complementary

Split-complementary colors differ from the complementary color scheme. The scheme consists of three colors, the original color and two neighbors of the complement color.



75.6984, -9.4609, 0.7401



75.6967, 2.5659, 4.3672



75.6984, -9.7145, 6.9394

Square

The Square scheme is like the rectangle color scheme, but the four colors are evenly spaced on the color wheel.



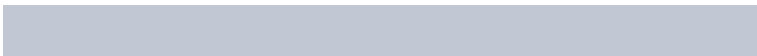
75.6984, 2.5639, 4.3685



75.6984, -4.3041, 10.0438



75.6984, -10.4310, 3.8716



75.6984, -3.7818, -2.3240

Rectangle

The Rectangle color scheme consists of four colors that form a rectangle on the color wheel.



75.6967, 2.5659, 4.3672



75.6984, -0.0259, 8.8529



75.6984, -10.4310, 3.8716



75.6984, -7.9783, -0.9387

Sweetspot

The Sweet Spot groups the original color and five complimentary colors.



75.6984, 2.5639, 4.3685



97.3850, -2.3176, 5.3793



75.7384, 3.5983, -2.5474



44.7342, -0.6970, 2.4842

0.0000, NaN, NaN



46.2646, -2.4686, 2.5136

Same Dimension

The Same Dimension uses a secret algorithm to generate beautiful new colors.



75.6984, 2.5639, 4.3685



91.4239, 4.8272, 5.3678



77.0094, -0.5585, 7.6907



35.3065, 1.5873, 2.0579



29.6322, 51.2169, 15.4969



7.3640, 12.8976, 2.5378

Inverse Universe

The Inverse Universe completely reimagines the original color for something new.



75.6984, 2.5639, 4.3685



91.4239, 4.8272, 5.3678



78.4967, -7.4736, 0.6901



35.3065, 1.5873, 2.0579



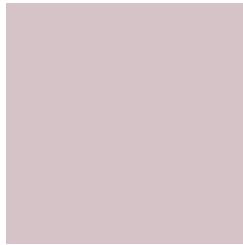
29.6322, 51.2169, 15.4969



7.3640, 12.8976, 2.5378

Previews

White Background



This preview shows how the HunterLab color 75.6967, 2.5659, 4.3672 looks on a white background.

Color Contrast Check

Large Text (above 18pt) WCAG AA × Fail

Any Text WCAG AA × Fail

Large Text (above 18pt) WCAG AAA × Fail

Any Text WCAG AAA × Fail

Black Background



This preview shows how the HunterLab color 75.6967, 2.5659, 4.3672 looks on a black background.

Color Contrast Check

Large Text (above 18pt) WCAG AA ✓ Pass

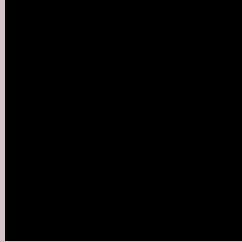
Any Text WCAG AA ✓ Pass

Large Text (above 18pt) WCAG AAA ✓ Pass

Any Text WCAG AAA ✓ Pass

If you want to check with other color combinations, try the [Color Contrast Checker](#).

HunterLab 75.6967, 2.5659, 4.3672 Background



This preview shows how black text looks on a background with the HunterLab color 75.6967, 2.5659, 4.3672.



This preview shows how white text looks on a background with the HunterLab color 75.6967, 2.5659,

4.3672.

Color Blindness Simulation

Color vision deficiency is a very complex topic, and I could not describe the different causes any better than Wikipedia does, so if you want to learn more, you should check out their [article about color blindness](#).

Dichromacy



Original Color

75.6967, 2.5659, 4.3672

Protanopia

75.6054, -2.2361, 3.2148

Deuteranopia

75.6101, 5.2983, 4.3133



Tritanopia

75.5245, 5.6464, -0.7184

Trichromacy



Original Color

75.6967, 2.5659, 4.3672

Protanomaly

75.6468, -0.6070, 3.7744

Deuteranomaly

75.7007, 4.0961, 4.3988

Tritanomaly

75.6885, 4.4303, 1.4725

Monochromacy



Original Color

75.6967, 2.5659, 4.3672

Achromatopsia

76.4250, -4.0778, 4.1523

Achromatomaly

76.1552, -1.9533, 4.3500

CSS Examples

Text

The CSS property to change the color of the text to HunterLab 75.6967, 2.5659, 4.3672 is called "color". The color property can be set on classes, ids or directly on the HTML element.

This example shows how text in the color `rgb(213, 195, 199)` looks like.

```
.text, #text, p{  
    color:rgb(213, 195, 199)  
}
```

If you want to add a text shadow in that color use the text-shadow property, you can generate a text shadow directly with our [CSS Text Shadow Generator](#).

Here you see how black text with a 4 pixel rgb(213, 195, 199) colored shadow looks like.

```
.shadow{ text-shadow: 4px 4px 2px rgb(213, 195, 199) }
```

Border

The CSS property to change the border of an element to HunterLab 75.6967, 2.5659, 4.3672 is called "border". The border property can be set on classes, ids or directly on the HTML element.

This example shows the color as border, it can be applied via the CSS property "border" or "border-color".

```
.border, #border, table{ border:4px solid rgb(213, 195, 199) }
```


If only the border color should be changed use the property `border-color`.

```
.border{ border-color:rgb(213, 195, 199) }
```

If you want to add a box shadow in that color use:

Here you see how a box with a 4 pixel `rgb(213, 195, 199)` colored shadow looks like.

```
.boxshadow{ -moz-box-shadow:4px 4px 4px  
4px rgb(213, 195, 199); -webkit-box-  
shadow:4px 4px 4px 4px rgb(213, 195, 199);  
box-shadow:4px 4px 4px 4px rgb(213, 195,  
199) }
```

Background

The CSS property to change the background color of an element to HunterLab 75.6967, 2.5659, 4.3672 is called "background". The background property can be set on classes, ids or directly on the HTML element.

```
.background, #background, body{  
background: rgb(213, 195, 199) }
```

If only the background color should be changed can be used:

```
.background{ background-color: rgb(213,  
195, 199) }
```

This example shows the color as background, it is applied via the CSS property "background".

To optimize and compress your CSS code, you can use our [online CSS compressor and optimizer](#) based on csstidy. If you want to create a linear or radial gradient as background or border, check our [CSS Gradient Generator](#).

Hey! You found this booklet interesting? Support Converting Colors with the new Membership Option!

The pro membership hides all ads, plus gives you double the colors in the color bucket, and more awesome pro features!

[Learn more, Memberships starting at \\$2.50/m!](#)

**Follow me
on Twitter!**

@ConvertingColor