

Converting Colors

HunterLab(75.8077, 2.0989,
4.8077)

Have a look what the booklet for
HunterLab(75.8077, 2.0989, 4.8077)
contains.

HunterLab(75.9626, 1.8840, 5.1409)	3
<i>Conversions</i>	4
<i>Details</i>	6
<i>Harmonies</i>	12
<i>Previews</i>	24
<i>Color Blindness Simulation</i>	28
<i>CSS Examples</i>	31

Color

**HunterLab(75.9626, 1.8840,
5.1409)**

Conversions

Conversions Part 1

Format	Color
Hex	D5C4C6
RGB	213, 196, 198
RGB Percent	84%, 77%, 78%
CMY	0.1647, 0.2314, 0.2235
CMYK	0.00, 0.08, 0.07, 0.16
HSL	353°, 17%, 80%
HSV	353°, 8%, 84%
XYZ	57.3735, 57.7032, 61.5400
YIQ	201.3110, 9.4900, 4.2260

Conversions

Conversions Part 2

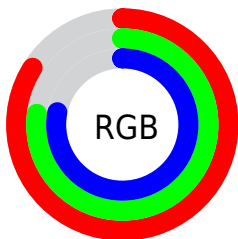
Format	Color
R _Y B	213, 196, 198
Decimal	14009542
CIE Lab	80.57, 6.30, 1.15
CIE LCh	81, 6.402, 10.328
Yxy	57.7057, 0.3248, 0.3267
Android (android.graphics.Color)	4292199622 (0xFFD5C4C6)
YUV	201.3110, -1.6323, 10.2513
Hunter-Lab	75.9626, 1.8840, 5.1409

Details

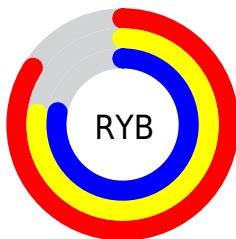
The HunterLab color $75.9626, 1.8840, 5.1409$ is a light color, and the websafe version is hex `CCCCCC`. A complement of this color would be $80.0180, -9.9360, 3.4667$, and the grayscale version is $76.5630, -4.0852, 4.1598$.

A 20% lighter version of the original color is $99.3633, -4.2744, 4.7000$, and $53.5058, 2.4694, 3.7753$ is the 20% darker color. If you saturate the color by 10%, you get $69.2491, 9.9409, 6.2383$, and if you desaturate by 10%, it is $83.0234, -5.9049, 4.2728$.

Distribution



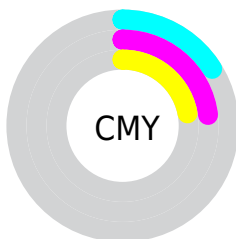
- Red (84%)
- Green (77%)
- Blue (78%)



- Red (84%)
- Yellow (77%)
- Blue (78%)



- Cyan (0%)
- Magenta (8%)
- Yellow (7%)
- Black (16%)



- Cyan (16%)
- Magenta (23%)
- Yellow (22%)

Brightness & Saturation Gradients

These gradients show how the HunterLab color 75.9626, 1.8840, 5.1409 changes by changing the brightness by 10 percent. The first figure shows a shift by +10% for each color and the second figure -10%.

Similar to the brightness gradients but the following saturation gradients show a change of the HunterLab color 75.9626, 1.8840, 5.1409 by changing the saturation by 10% instead.

■ 75.9626, 1.8840,
5.1409

■ 75.9626, 1.8840,
5.1409

■ 203.9824, -2.6995,
12.5079

■ 64.4764, 2.1894,
4.4625

■ 100.7443, 1.1277,
6.5917

■ 53.6343, 2.4448,
3.8147

■ 113.9815, 0.6874,
7.3593

■ 43.4789, 2.6425,
3.2003

■ 127.7525, 0.2085,
8.1541

■ 34.0603, 2.7752,
2.6211

■ 142.0373, -0.3069,
8.9752

■ 25.4414, 2.8327,
2.0791

■ 156.8181, -0.8569,
9.8219

■ 17.7047, 2.8004,
1.5766

■ 172.0788, -1.4399,

■ 10.9653, 2.6551,

10.6934

1.1157

187.8047, -2.0546,
11.5889

■ 2.5228, 10.7447,
1.7659

0.0000, NaN, NaN

■ 75.9626, 1.8840,
5.1409

■ 75.9626, 1.8840,
5.1409

■ 69.2491, 9.9409,
6.2383

■ 83.0234, -5.9049,
4.2728

■ 62.9395, 18.2701,
7.5983

■ 90.3776, -13.4416,
3.5956

■ 57.1126, 26.8174,
9.2556

■ 96.3574, -18.2898,
1.1545

■ 51.8631, 35.4388,
11.2277

■ 96.3775, -18.1767,
0.8679

■ 47.3022, 43.8429,
13.4957

■ 43.5483, 51.5468,
15.9755

■ 40.7062, 57.9013,
18.4958

■ 38.8303, 62.2649,
20.8107

■ 37.8517, 64.4198,
22.6496

Harmonies

Analogous

The Analogous color harmony consists of three colors that are next to each other on the color wheel.



75.9643, 1.6237, 2.2059



75.9626, 1.8840, 5.1409



75.9643, 0.5295, 7.7055

Triad

The Triadic color harmony groups three colors that are evenly spaced from another and form a triangle on the color wheel.



75.9643, 1.8820, 5.1421



75.9643, -7.8676, 8.3223



75.9643, -6.0488, -1.3870

Complementary

The Complementary color scheme is a pair of colors which are on the opposite of each other on the color wheel.



75.9626, 1.8840, 5.1409



80.0180, -9.9360, 3.4667

Split Complementary

Split-complementary colors differ from the complementary color scheme. The scheme consists of three colors, the original color and two neighbors of the complement color.



75.9643, -8.5378, 0.3822



75.9626, 1.8840, 5.1409



75.9643, -9.5762, 6.0147

Square

The Square scheme is like the rectangle color scheme, but the four colors are evenly spaced on the color wheel.



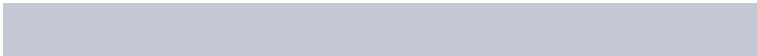
75.9643, 1.8820, 5.1421



75.9643, -5.1205, 9.4923



75.9643, -9.8196, 3.1137



75.9643, -2.9883, -1.6435

Rectangle

The Rectangle color scheme consists of four colors that form a rectangle on the color wheel.



75.9626, 1.8840, 5.1409



75.9643, -1.0911, 8.8877



75.9643, -9.8196, 3.1137



75.9643, -6.9788, -0.9462

Sweetspot

The Sweet Spot groups the original color and five complimentary colors.



75.9643, 1.8820, 5.1421



98.2357, -3.4199, 5.6382



76.2208, 3.7062, -1.9364



45.4886, -1.6263, 2.6037

0.0000, NaN, NaN



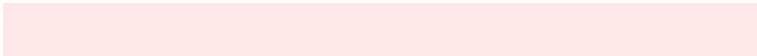
46.2646, -2.4686, 2.5136

Same Dimension

The Same Dimension uses a secret algorithm to generate beautiful new colors.



75.9643, 1.8820, 5.1421



91.3401, 4.3767, 6.5644



77.7717, -1.6456, 8.0775



35.2765, 1.4254, 2.4871



29.4819, 50.6608, 17.7162



7.2962, 12.6479, 3.5292

Inverse Universe

The Inverse Universe completely reimagines the original color for something new.



75.9643, 1.8820, 5.1421



91.3401, 4.3767, 6.5644



78.1373, -6.4507, 0.2679



35.2765, 1.4254, 2.4871



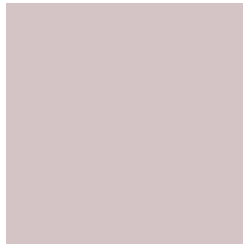
29.4819, 50.6608, 17.7162



7.2962, 12.6479, 3.5292

Previews

White Background



This preview shows how the HunterLab color 75.9626, 1.8840, 5.1409 looks on a white background.

Color Contrast Check

Large Text (above 18pt) WCAG AA × Fail

Any Text WCAG AA × Fail

Large Text (above 18pt) WCAG AAA × Fail

Any Text WCAG AAA × Fail

Black Background



This preview shows how the HunterLab color 75.9626, 1.8840, 5.1409 looks on a black background.

Color Contrast Check

Large Text (above 18pt) WCAG AA ✓ Pass

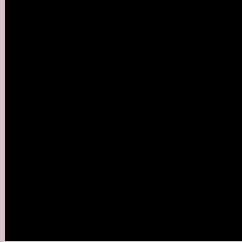
Any Text WCAG AA ✓ Pass

Large Text (above 18pt) WCAG AAA ✓ Pass

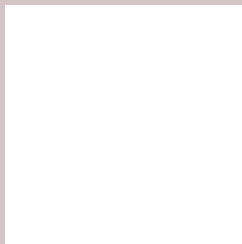
Any Text WCAG AAA ✓ Pass

If you want to check with other color combinations, try the [Color Contrast Checker](#).

HunterLab 75.9626, 1.8840, 5.1409 Background



This preview shows how black text looks on a background with the HunterLab color 75.9626, 1.8840, 5.1409.

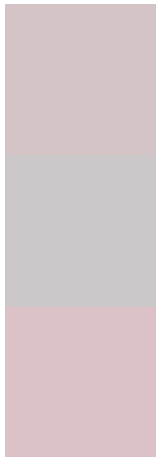


This preview shows how white text looks on a background with the HunterLab color 75.9626, 1.8840,

Color Blindness Simulation

Color vision deficiency is a very complex topic, and I could not describe the different causes any better than Wikipedia does, so if you want to learn more, you should check out their [article about color blindness](#).

Dichromacy



Original Color

75.9626, 1.8840, 5.1409

Protanopia

75.9694, -2.5952, 4.1202

Deuteranopia

76.0766, 5.2990, 5.3334



Tritanopia

75.9171, 5.4566, -0.2349

Trichromacy



Original Color

75.9626, 1.8840, 5.1409

Protanomaly

76.0112, -0.9609, 4.6745

Deuteranomaly

76.0652, 3.7518, 5.2931

Tritanomaly

75.9830, 3.9091, 1.8202

Monochromacy



Original Color

75.9626, 1.8840, 5.1409

Achromatopsia

76.4250, -4.0778, 4.1523

Achromatomaly

76.1552, -1.9533, 4.3500

CSS Examples

Text

The CSS property to change the color of the text to HunterLab 75.9626, 1.8840, 5.1409 is called "color". The color property can be set on classes, ids or directly on the HTML element.

This example shows how text in the color `rgb(213, 196, 198)` looks like.

```
.text, #text, p{  
    color:rgb(213, 196, 198)  
}
```

If you want to add a text shadow in that color use the text-shadow property, you can generate a text shadow directly with our [CSS Text Shadow Generator](#).

Here you see how black text with a 4 pixel rgb(213, 196, 198) colored shadow looks like.

```
.shadow{ text-shadow: 4px 4px 2px rgb(213, 196, 198) }
```

Border

The CSS property to change the border of an element to HunterLab 75.9626, 1.8840, 5.1409 is called "border".

The border property can be set on classes, ids or directly on the HTML element.

This example shows the color as border, it can be applied via the CSS property "border" or "border-color".

```
.border, #border, table{ border:4px solid rgb(213, 196, 198) }
```


If only the border color should be changed use the property `border-color`.

```
.border{ border-color:rgb(213, 196, 198) }
```

If you want to add a box shadow in that color use:

Here you see how a box with a 4 pixel `rgb(213, 196, 198)` colored shadow looks like.

```
.boxshadow{ -moz-box-shadow:4px 4px 4px  
4px rgb(213, 196, 198); -webkit-box-  
shadow:4px 4px 4px 4px rgb(213, 196, 198);  
box-shadow:4px 4px 4px 4px rgb(213, 196,  
198) }
```

Background

The CSS property to change the background color of an element to HunterLab 75.9626, 1.8840, 5.1409 is called "background". The background property can be set on classes, ids or directly on the HTML element.

```
.background, #background, body{  
background: rgb(213, 196, 198) }
```

If only the background color should be changed can be used:

```
.background{ background-color: rgb(213,  
196, 198) }
```

This example shows the color as background, it is applied via the CSS property "background".

To optimize and compress your CSS code, you can use our [online CSS compressor and optimizer](#) based on csstidy. If you want to create a linear or radial gradient as background or border, check our [CSS Gradient Generator](#).

Hey! You found this booklet interesting? Support Converting Colors with the new Membership Option!

The pro membership hides all ads, plus gives you double the colors in the color bucket, and more awesome pro features!

[Learn more, Memberships starting at \\$2.50/m!](#)

**Follow me
on Twitter!**

@ConvertingColor