

Converting Colors

HunterLab(75.8272, 4.7645,
4.3229)

Have a look what the booklet for
HunterLab(75.8272, 4.7645, 4.3229)
contains.

| | |
|---|----|
| HunterLab(75.9029, 4.7767, 4.6480) | 3 |
| <i>Conversions</i> | 4 |
| <i>Details</i> | 6 |
| <i>Harmonies</i> | 12 |
| <i>Previews</i> | 24 |
| <i>Color Blindness Simulation</i> | 28 |
| <i>CSS Examples</i> | 31 |

Color

**HunterLab(75.9029, 4.7767,
4.6480)**

Conversions

Conversions Part 1

| Format | Color |
|---------------|---------------------------|
| Hex | DAC2C7 |
| RGB | 218, 194, 199 |
| RGB Percent | 85%, 76%, 78% |
| CMY | 0.1451, 0.2392, 0.2196 |
| CMYK | 0.00, 0.11, 0.09, 0.15 |
| HSL | 348°, 24%, 81% |
| HSV | 348°, 11%, 85% |
| XYZ | 58.5140, 57.6125, 62.0691 |
| YIQ | 201.7460, 12.6990, 6.6430 |

Conversions

Conversions Part 2

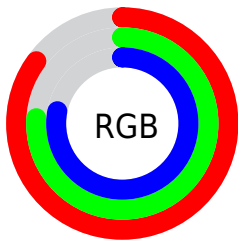
| Format | Color |
|-------------------------------------|-------------------------------|
| R _Y B | 218, 194, 199 |
| Decimal | 14336711 |
| CIE Lab | 80.52, 9.30, 0.59 |
| CIE LCh | 81, 9.317, 3.619 |
| Yxy | 57.6150, 0.3284, 0.3233 |
| Android (android.graphics.Color) | 4292526791 (0xFFDAC2C7) |
| YUV | 201.7460, -1.3538, 14.2548 |
| Hunter-Lab | 75.9029, 4.7767, 4.6480 |

Details

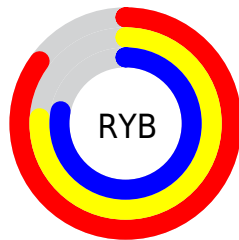
The HunterLab color $75.9029, 4.7767, 4.6480$ is a light color, and the websafe version is hex `CCCCCC`. A complement of this color would be $81.4971, -12.6672, 4.1966$, and the grayscale version is $76.7465, -4.0950, 4.1698$.

A 20% lighter version of the original color is $98.7291, -3.2108, 3.9652$, and $53.4668, 5.2304, 3.3320$ is the 20% darker color. If you saturate the color by 10%, you get $69.1776, 13.4303, 5.0521$, and if you desaturate by 10%, it is $82.9994, -3.6343, 4.5453$.

Distribution



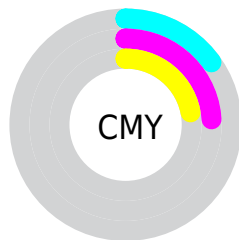
- Red (85%)
- Green (76%)
- Blue (78%)



- Red (85%)
- Yellow (76%)
- Blue (78%)



- Cyan (0%)
- Magenta (11%)
- Yellow (9%)
- Black (15%)





- Cyan (15%)
- Magenta (24%)
- Yellow (22%)

Brightness & Saturation Gradients


These gradients show how the HunterLab color 75.9029, 4.7767, 4.6480 changes by changing the brightness by 10 percent. The first figure shows a shift by +10% for each color and the second figure -10%.


Similar to the brightness gradients but the following saturation gradients show a change of the HunterLab color 75.9029, 4.7767, 4.6480 by changing the saturation by 10% instead.


 75.9029, 4.7767,
4.6480

 75.9029, 4.7767,
4.6480


203.8995, 1.2515,
11.8195

 64.4199, 4.9396,
3.9964


 100.6787, 4.2861,
6.0492

 53.5811, 5.0448,
3.3770


113.9132, 3.9707,
6.7937

 43.4294, 5.0834,
2.7930

127.6815, 3.6122,
7.5662

 34.0146, 5.0459,
2.2466

141.9637, 3.2130,
8.3659

 25.3999, 4.9200,
1.7406

156.7421, 2.7756,
9.1919

 17.6679, 4.6875,
1.2783

172.0004, 2.3017,

 10.9340, 4.3203,

10.0433

0.8640

187.7240, 1.7932,
10.9194

■ 2.4092, 16.6893,
1.1429

0.0000, NaN, NaN

■ 75.9029, 4.7767,
4.6480

■ 75.9029, 4.7767,
4.6480

■ 69.1776, 13.4303,
5.0521

■ 82.9994, -3.6343,
4.5453

■ 62.8852, 22.3079,
5.8118

■ 90.4092, -11.8050,
4.6897

■ 57.1101, 31.3165,
6.9886

■ 96.6318, -17.5370,
3.3480

■ 51.9527, 40.2535,
8.6333

■ 96.7706, -16.7591,
1.3714

■ 47.5276, 48.7504,
10.7624

■ 43.9516, 56.2460,
13.3226

■ 41.3184, 62.0572,
16.1570

■ 39.6586, 65.6112,
19.0042

■ 38.8562, 67.0378,
21.2681

Harmonies

Analogous

The Analogous color harmony consists of three colors that are next to each other on the color wheel.



75.9046, 3.8529, 0.3830



75.9029, 4.7767, 4.6480



75.9046, 3.2855, 8.5485

Triad

The Triadic color harmony groups three colors that are evenly spaced from another and form a triangle on the color wheel.



75.9046, 4.7746, 4.6493



75.9046, -8.7850, 10.6706



75.9046, -7.8603, -3.6171

Complementary

The Complementary color scheme is a pair of colors which are on the opposite of each other on the color wheel.



75.9029, 4.7767, 4.6480



81.4971, -12.6672, 4.1966

Split Complementary

Split-complementary colors differ from the complementary color scheme. The scheme consists of three colors, the original color and two neighbors of the complement color.



75.9046, -11.1251, -0.5676



75.9029, 4.7767, 4.6480



75.9046, -11.6502, 7.6984

Square

The Square scheme is like the rectangle color scheme, but the four colors are evenly spaced on the color wheel.



75.9046, 4.7746, 4.6493



75.9046, -4.5994, 11.8949



75.9046, -12.4969, 3.6104



75.9046, -3.5073, -4.5493

Rectangle

The Rectangle color scheme consists of four colors that form a rectangle on the color wheel.



75.9029, 4.7767, 4.6480



75.9046, 1.1461, 10.4634



75.9046, -12.4969, 3.6104



75.9046, -9.1180, -2.7973

Sweetspot

The Sweet Spot groups the original color and five complimentary colors.



75.9046, 4.7746, 4.6493



97.3816, -2.3361, 5.4277



76.0029, 6.3396, -4.8008



44.7322, -0.7078, 2.5126

0.0000, NaN, NaN



46.2646, -2.4686, 2.5136

Same Dimension

The Same Dimension uses a secret algorithm to generate beautiful new colors.



75.9046, 4.7746, 4.6493



88.9192, 7.8568, 5.6221



77.7707, 0.4499, 9.0170



36.1879, 1.6155, 2.1688



30.0964, 51.9663, 16.1506



7.7425, 13.5298, 2.9062

Inverse Universe

The Inverse Universe completely reimagines the original color for something new.



75.9046, 4.7746, 4.6493



88.9192, 7.8568, 5.6221



79.5117, -8.3792, -0.6130



36.1879, 1.6155, 2.1688



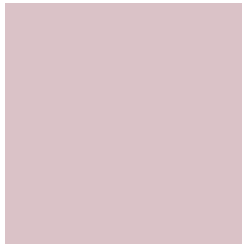
30.0964, 51.9663, 16.1506



7.7425, 13.5298, 2.9062

Previews

White Background



This preview shows how the HunterLab color 75.9029, 4.7767, 4.6480 looks on a white background.

Color Contrast Check

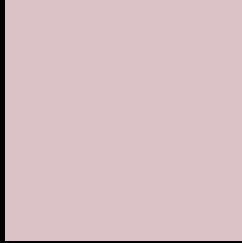
Large Text (above 18pt) WCAG AA × Fail

Any Text WCAG AA × Fail

Large Text (above 18pt) WCAG AAA × Fail

Any Text WCAG AAA × Fail

Black Background



This preview shows how the HunterLab color 75.9029, 4.7767, 4.6480 looks on a black background.

Color Contrast Check

Large Text (above 18pt) WCAG AA ✓ Pass

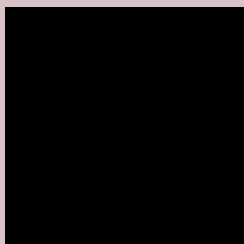
Any Text WCAG AA ✓ Pass

Large Text (above 18pt) WCAG AAA ✓ Pass

Any Text WCAG AAA ✓ Pass

If you want to check with other color combinations, try the [Color Contrast Checker](#).

HunterLab 75.9029, 4.7767, 4.6480 Background



This preview shows how black text looks on a background with the HunterLab color 75.9029, 4.7767, 4.6480.



This preview shows how white text looks on a background with the HunterLab color 75.9029, 4.7767,

4.6480.

Color Blindness Simulation

Color vision deficiency is a very complex topic, and I could not describe the different causes any better than Wikipedia does, so if you want to learn more, you should check out their [article about color blindness](#).

Dichromacy



Original Color

75.9029, 4.7767, 4.6480

Protanopia

76.0313, -2.2572, 3.2371

Deuteranopia

76.0047, 5.1187, 4.7733



Tritanopia

75.9961, 7.1566, 0.3974

Trichromacy



Original Color

75.9029, 4.7767, 4.6480

Protanomaly

75.8679, 0.2128, 3.5694

Deuteranomaly

76.0047, 5.1187, 4.7733

Tritanomaly

75.8998, 6.6429, 1.7674

Monochromacy



Original Color

75.9029, 4.7767, 4.6480

Achromatopsia

76.8517, -4.1006, 4.1755

Achromatomaly

76.4682, -0.8142, 4.2602

CSS Examples

Text

The CSS property to change the color of the text to HunterLab 75.9029, 4.7767, 4.6480 is called "color". The color property can be set on classes, ids or directly on the HTML element.

This example shows how text in the color `rgb(218, 194, 199)` looks like.

```
.text, #text, p{  
    color:rgb(218, 194, 199)  
}
```

If you want to add a text shadow in that color use the text-shadow property, you can generate a text shadow directly with our [CSS Text Shadow Generator](#).

Here you see how black text with a 4 pixel rgb(218, 194, 199) colored shadow looks like.

```
.shadow{ text-shadow: 4px 4px 2px rgb(218, 194, 199) }
```

Border

The CSS property to change the border of an element to HunterLab 75.9029, 4.7767, 4.6480 is called "border". The border property can be set on classes, ids or directly on the HTML element.

This example shows the color as border, it can be applied via the CSS property "border" or "border-color".

```
.border, #border, table{ border:4px solid rgb(218, 194, 199) }
```


If only the border color should be changed use the property `border-color`.

```
.border{ border-color:rgb(218, 194, 199) }
```

If you want to add a box shadow in that color use:

Here you see how a box with a 4 pixel `rgb(218, 194, 199)` colored shadow looks like.

```
.boxshadow{ -moz-box-shadow:4px 4px 4px  
4px rgb(218, 194, 199); -webkit-box-  
shadow:4px 4px 4px 4px rgb(218, 194, 199);  
box-shadow:4px 4px 4px 4px rgb(218, 194,  
199) }
```

Background

The CSS property to change the background color of an element to HunterLab 75.9029, 4.7767, 4.6480 is called "background". The background property can be set on classes, ids or directly on the HTML element.

```
.background, #background, body{  
background: rgb(218, 194, 199) }
```

If only the background color should be changed can be used:

```
.background{ background-color: rgb(218,  
194, 199) }
```

This example shows the color as background, it is applied via the CSS property "background".

To optimize and compress your CSS code, you can use our [online CSS compressor and optimizer](#) based on csstidy. If you want to create a linear or radial gradient as background or border, check our [CSS Gradient Generator](#).

Hey! You found this booklet interesting? Support Converting Colors with the new Membership Option!

The pro membership hides all ads, plus gives you double the colors in the color bucket, and more awesome pro features!

[Learn more, Memberships starting at \\$2.50/m!](#)

**Follow me
on Twitter!**

@ConvertingColor