

# Converting Colors

HunterLab(75.8459, 1.5514,  
5.1233)

Have a look what the booklet for  
HunterLab(75.8459, 1.5514, 5.1233)  
contains.

<b>HunterLab(75.8644, 1.5499, 5.0206)</b> .....	3
<i><b>Conversions</b></i> .....	4
<i><b>Details</b></i> .....	6
<i><b>Harmonies</b></i> .....	12
<i><b>Previews</b></i> .....	24
<i><b>Color Blindness Simulation</b></i> .....	28
<i><b>CSS Examples</b></i> .....	31

# Color

**HunterLab(75.8644, 1.5499,  
5.0206)**

# Conversions

## Conversions Part 1

Format	Color
Hex	D4C4C6
RGB	212, 196, 198
RGB Percent	83%, 77%, 78%
CMY	0.1686, 0.2314, 0.2235
CMYK	0.00, 0.08, 0.07, 0.17
HSL	353°, 16%, 80%
HSV	353°, 8%, 83%
XYZ	57.0843, 57.5541, 61.5264
YIQ	201.0120, 8.8940, 4.0140

# Conversions

## Conversions Part 2

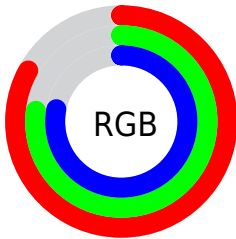
Format	Color
R <sub>Y</sub> B	212, 196, 198
Decimal	13944006
CIE Lab	80.49, 5.95, 1.02
CIE LCh	80, 6.033, 9.700
Yxy	57.5566, 0.3240, 0.3267
Android (android.graphics.Color)	4292134086 (0xFFD4C4C6)
YUV	201.0120, -1.4849, 9.6365
Hunter-Lab	75.8644, 1.5499, 5.0206

# Details

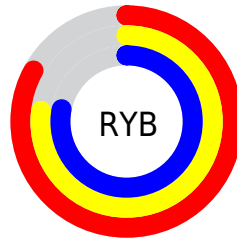
The HunterLab color  $75.8644, 1.5499, 5.0206$  is a light color, and the websafe version is hex `CCCCCC`. A complement of this color would be  $79.6726, -9.6096, 3.5492$ , and the grayscale version is  $76.4350, -4.0784, 4.1529$ .

A 20% lighter version of the original color is  $99.3633, -4.2744, 4.7000$ , and  $53.4113, 2.1500, 3.6598$  is the 20% darker color. If you saturate the color by 10%, you get  $69.1766, 9.5729, 6.0378$ , and if you desaturate by 10%, it is  $82.8947, -6.2101, 4.2344$ .

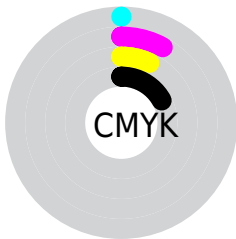
# Distribution



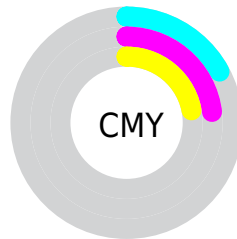
- Red (83%)
- Green (77%)
- Blue (78%)



- Red (83%)
- Yellow (77%)
- Blue (78%)



- Cyan (0%)
- Magenta (8%)
- Yellow (7%)
- Black (17%)



- Cyan (17%)
- Magenta (23%)
- Yellow (22%)

# Brightness & Saturation Gradients

These gradients show how the HunterLab color 75.8644, 1.5499, 5.0206 changes by changing the brightness by 10 percent. The first figure shows a shift by +10% for each color and the second figure -10%.

Similar to the brightness gradients but the following saturation gradients show a change of the HunterLab color 75.8644, 1.5499, 5.0206 by changing the saturation by 10% instead.



■ 75.8644, 1.5499,  
5.0206

■ 75.8644, 1.5499,  
5.0206

■ 203.8459, -3.1558,  
12.3400

■ 64.3834, 1.8718,  
4.3487

■ 100.6364, 0.7629,  
6.4593

■ 53.5469, 2.1445,  
3.7078

■ 113.8691, 0.3082,  
7.2213

■ 43.3974, 2.3606,  
3.1009

■ 127.6357, -0.1846,  
8.0107

■ 33.9852, 2.5129,  
2.5297

■ 141.9163, -0.7134,  
8.8266

■ 25.3732, 2.5917,  
1.9964

■ 156.6930, -1.2764,  
9.6682

■ 17.6442, 2.5826,  
1.5036

■ 171.9498, -1.8720,

■ 10.9138, 2.4630,

10.5347

1.0541

187.6719, -2.4989,  
11.4256

■ 2.3330, 10.9818,  
1.6331

0.0000, NaN, NaN

■ 75.8644, 1.5499,  
5.0206

■ 75.8644, 1.5499,  
5.0206

■ 69.1766, 9.5729,  
6.0378

■ 82.8947, -6.2101,  
4.2344

■ 62.8869, 17.8638,  
7.3205

■ 90.2148, -13.7228,  
3.6400

■ 57.0727, 26.3707,  
8.9056

■ 96.2556, -18.7065,  
1.4018

■ 51.8272, 34.9546,  
10.8149

■ 96.3002, -18.4564,  
0.7686

■ 47.2598, 43.3327,  
13.0356

■ 43.4882, 51.0337,  
15.4922

■ 40.6174, 57.4179,  
18.0222

■ 38.7048, 61.8430,  
20.3846

■ 37.6950, 64.0463,  
22.3085

# Harmonies

## Analogous

The Analogous color harmony consists of three colors that are next to each other on the color wheel.



75.8661, 1.2726, 2.2579



75.8644, 1.5499, 5.0206



75.8661, 0.3054, 7.4547

# Triad

The Triadic color harmony groups three colors that are evenly spaced from another and form a triangle on the color wheel.



75.8661, 1.5479, 5.0218



75.8661, -7.5966, 8.1155



75.8661, -5.9854, -1.0392

# Complementary

The Complementary color scheme is a pair of colors which are on the opposite of each other on the color wheel.



75.8644, 1.5499, 5.0206



79.6726, -9.6096, 3.5492

# Split Complementary

Split-complementary colors differ from the complementary color scheme. The scheme consists of three colors, the original color and two neighbors of the complement color.



75.8661, -8.3133, 0.6469



75.8644, 1.5499, 5.0206



75.8661, -9.2338, 5.9548

# Square

The Square scheme is like the rectangle color scheme, but the four colors are evenly spaced on the color wheel.



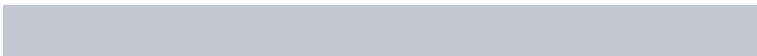
75.8661, 1.5479, 5.0218



75.8661, -4.9935, 9.1958



75.8661, -9.4942, 3.2264



75.8661, -3.1061, -1.3120



# Rectangle

The Rectangle color scheme consists of four colors that form a rectangle on the color wheel.



75.8644, 1.5499, 5.0206



75.8661, -1.2057, 8.5871



75.8661, -9.4942, 3.2264



75.8661, -6.8571, -0.6160

# Sweetspot

The Sweet Spot groups the original color and five complimentary colors.



75.8661, 1.5479, 5.0218



98.2369, -3.4134, 5.6211



76.1038, 3.2447, -1.5749



45.4891, -1.6234, 2.5961

0.0000, NaN, NaN



46.2646, -2.4686, 2.5136



# Same Dimension

The Same Dimension uses a secret algorithm to generate beautiful new colors.



75.8661, 1.5479, 5.0218



92.1925, 3.4186, 6.3635



77.5649, -1.7889, 7.8415



35.2786, 1.4367, 2.4571



29.4897, 50.6897, 17.6008



7.3010, 12.6656, 3.4590



# Inverse Universe

The Inverse Universe completely reimagines the original color for something new.



75.8661, 1.5479, 5.0218



92.1925, 3.4186, 6.3635



77.9089, -6.3092, 0.4944



35.2786, 1.4367, 2.4571



29.4897, 50.6897, 17.6008

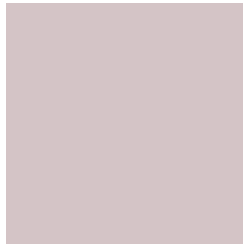


7.3010, 12.6656, 3.4590



# Previews

## White Background



This preview shows how the HunterLab color 75.8644, 1.5499, 5.0206 looks on a white background.

## Color Contrast Check

Large Text (above 18pt) WCAG AA × Fail

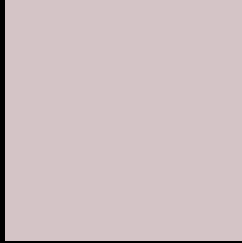
Any Text WCAG AA × Fail

Large Text (above 18pt) WCAG AAA × Fail

Any Text WCAG AAA × Fail



# Black Background



This preview shows how the HunterLab color 75.8644, 1.5499, 5.0206 looks on a black background.

## Color Contrast Check

Large Text (above 18pt) WCAG AA ✓ Pass

Any Text WCAG AA ✓ Pass

Large Text (above 18pt) WCAG AAA ✓ Pass

Any Text WCAG AAA ✓ Pass

If you want to check with other color combinations, try the [Color Contrast Checker](#).

# HunterLab 75.8644, 1.5499, 5.0206 Background



This preview shows how black text looks on a background with the HunterLab color 75.8644, 1.5499, 5.0206.



This preview shows how white text looks on a background with the HunterLab color 75.8644, 1.5499,



# Color Blindness Simulation

Color vision deficiency is a very complex topic, and I could not describe the different causes any better than Wikipedia does, so if you want to learn more, you should check out their [article about color blindness](#).

## Dichromacy



### Original Color

75.8644, 1.5499, 5.0206

### Protanopia

75.9694, -2.5952, 4.1202

### Deuteranopia

75.7123, 5.6409, 4.4394



## Tritanopia

75.8177, 5.1228, -0.3638

# Trichromacy



## Original Color

75.8644, 1.5499, 5.0206

## Protanomaly

75.9167, -1.2860, 4.5581

## Deuteranomaly

75.7007, 4.0961, 4.3988

## Tritanomaly

75.8842, 3.5757, 1.6948

# Monochromacy



## Original Color

75.8644, 1.5499, 5.0206

## Achromatopsia

76.4250, -4.0778, 4.1523

## Achromatomaly

76.1552, -1.9533, 4.3500

# CSS Examples

## Text

The CSS property to change the color of the text to HunterLab 75.8644, 1.5499, 5.0206 is called "color". The color property can be set on classes, ids or directly on the HTML element.

This example shows how text in the color `rgb(212, 196, 198)` looks like.

```
.text, #text, p{  
    color:rgb(212, 196, 198)  
}
```

If you want to add a text shadow in that color use the text-shadow property, you can generate a text shadow directly with our [CSS Text Shadow Generator](#).

Here you see how black text with a 4 pixel rgb(212, 196, 198) colored shadow looks like.

```
.shadow{ text-shadow: 4px 4px 2px rgb(212, 196, 198) }
```

## Border

The CSS property to change the border of an element to HunterLab 75.8644, 1.5499, 5.0206 is called "border".

The border property can be set on classes, ids or directly on the HTML element.

This example shows the color as border, it can be applied via the CSS property "border" or "border-color".

```
.border, #border, table{ border:4px solid rgb(212, 196, 198) }
```



If only the border color should be changed use the property `border-color`.

```
.border{ border-color:rgb(212, 196, 198) }
```

If you want to add a box shadow in that color use:

Here you see how a box with a 4 pixel `rgb(212, 196, 198)` colored shadow looks like.

```
.boxshadow{ -moz-box-shadow:4px 4px 4px 4px rgb(212, 196, 198); -webkit-box-shadow:4px 4px 4px 4px rgb(212, 196, 198); box-shadow:4px 4px 4px 4px rgb(212, 196, 198) }
```

# Background

The CSS property to change the background color of an element to HunterLab 75.8644, 1.5499, 5.0206 is called "background". The background property can be set on classes, ids or directly on the HTML element.

```
.background, #background, body{  
background: rgb(212, 196, 198) }
```

If only the background color should be changed can be used:

```
.background{ background-color: rgb(212,  
196, 198) }
```

This example shows the color as background, it is applied via the CSS property "background".

To optimize and compress your CSS code, you can use our [online CSS compressor and optimizer](#) based on csstidy. If you want to create a linear or radial gradient as background or border, check our [CSS Gradient Generator](#).

Hey! You found this booklet interesting? Support Converting Colors with the new Membership Option!

The pro membership hides all ads, plus gives you double the colors in the color bucket, and more awesome pro features!

**[Learn more, Memberships starting at \\$2.50/m!](#)**

**Follow me  
on Twitter!**

@ConvertingColor