

Converting Colors

HunterLab(75.8605, 2.0101,
4.3116)

Have a look what the booklet for
HunterLab(75.8605, 2.0101, 4.3116)
contains.

HunterLab(75.9256, 1.8806, 4.1470)	3
<i>Conversions</i>	4
<i>Details</i>	6
<i>Harmonies</i>	12
<i>Previews</i>	24
<i>Color Blindness Simulation</i>	28
<i>CSS Examples</i>	31

Color

**HunterLab(75.9256, 1.8806,
4.1470)**

Conversions

Conversions Part 1

Format	Color
Hex	D4C4C8
RGB	212, 196, 200
RGB Percent	83%, 77%, 78%
CMY	0.1686, 0.2314, 0.2157
CMYK	0.00, 0.08, 0.06, 0.17
HSL	345°, 16%, 80%
HSV	345°, 8%, 83%
XYZ	57.3166, 57.6470, 62.7496
YIQ	201.2400, 8.2520, 4.6360

Conversions

Conversions Part 2

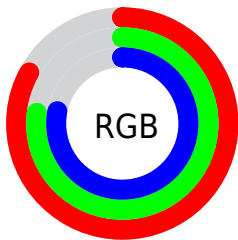
Format	Color
R _Y B	212, 196, 200
Decimal	13944008
CIE Lab	80.54, 6.29, 0.02
CIE LCh	81, 6.294, 0.158
Yxy	57.6495, 0.3225, 0.3244
Android (android.graphics.Color)	4292134088 (0xFFD4C4C8)
YUV	201.2400, -0.6113, 9.4365
Hunter-Lab	75.9256, 1.8806, 4.1470

Details

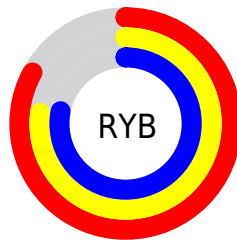
The HunterLab color $75.9256, 1.8806, 4.1470$ is a light color, and the websafe version is hex `CCCCCC`. A complement of this color would be $79.6104, -9.9547, 4.4364$, and the grayscale version is $76.5288, -4.0834, 4.1580$.

A 20% lighter version of the original color is $99.3633, -4.2744, 4.7000$, and $53.4691, 2.4607, 2.8359$ is the 20% darker color. If you saturate the color by 10%, you get $69.3152, 10.3052, 4.0575$, and if you desaturate by 10%, it is $82.8744, -6.3219, 4.5244$.

Distribution



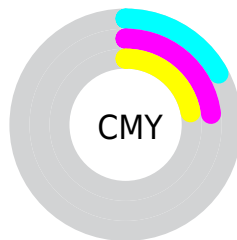
- Red (83%)
- Green (77%)
- Blue (78%)



- Red (83%)
- Yellow (77%)
- Blue (78%)



- Cyan (0%)
- Magenta (8%)
- Yellow (6%)
- Black (17%)



- Cyan (17%)
- Magenta (23%)
- Yellow (22%)

Brightness & Saturation Gradients

These gradients show how the HunterLab color 75.9256, 1.8806, 4.1470 changes by changing the brightness by 10 percent. The first figure shows a shift by +10% for each color and the second figure -10%.

Similar to the brightness gradients but the following saturation gradients show a change of the HunterLab color 75.9256, 1.8806, 4.1470 by changing the saturation by 10% instead.

■ 75.9256, 1.8806,
4.1470

■ 75.9256, 1.8806,
4.1470

■ 203.9310, -2.7035,
11.1218

■ 64.4414, 2.1861,
3.5222

■ 100.7037, 1.1242,
5.4984

■ 53.6013, 2.4416,
2.9313

■ 113.9391, 0.6838,
6.2196

■ 43.4482, 2.6393,
2.3777

■ 127.7085, 0.2048,
6.9698

■ 34.0320, 2.7721,
1.8642

■ 141.9917, -0.3106,
7.7479

■ 25.4157, 2.8296,
1.3941

■ 156.7710, -0.8607,
8.5530

■ 17.6819, 2.7973,
0.9719

■ 172.0302, -1.4438,

■ 10.9459, 2.6519,

9.3842

0.6039

187.7546, -2.0585,
10.2407

2.4530, 11.0498,
0.1629

0.0000, NaN, NaN

75.9256, 1.8806,
4.1470

75.9256, 1.8806,
4.1470

69.3152, 10.3052,
4.0575

82.8744, -6.3219,
4.5244

63.0972, 18.9434,
4.3122

90.1098, -14.3083,
5.1361

57.3465, 27.7270,
4.9805

96.0607, -19.8028,
4.1770

52.1530, 36.4984,
6.1312

96.3002, -18.4564,
0.7686

■ 47.6215, 44.9584,
7.8161

■ 43.8642, 52.6275,
10.0385

■ 40.9814, 58.8738,
12.7126

■ 39.0282, 63.0781,
15.6376

■ 37.9529, 65.0055,
18.5041

Harmonies

Analogous

The Analogous color harmony consists of three colors that are next to each other on the color wheel.



75.9273, 1.0815, 1.3137



75.9256, 1.8806, 4.1470



75.9273, 1.0650, 6.8736

Triad

The Triadic color harmony groups three colors that are evenly spaced from another and form a triangle on the color wheel.



75.9273, 1.8786, 4.1483



75.9273, -6.9696, 8.7851



75.9273, -6.9421, -0.8500

Complementary

The Complementary color scheme is a pair of colors which are on the opposite of each other on the color wheel.



75.9256, 1.8806, 4.1470



79.6104, -9.9547, 4.4364

Split Complementary

Split-complementary colors differ from the complementary color scheme. The scheme consists of three colors, the original color and two neighbors of the complement color.



75.9273, -9.0435, 1.2861



75.9256, 1.8806, 4.1470



75.9273, -9.0592, 6.8480

Square

The Square scheme is like the rectangle color scheme, but the four colors are evenly spaced on the color wheel.



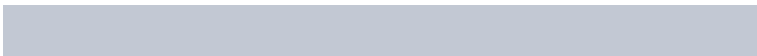
75.9273, 1.8786, 4.1483



75.9273, -4.0715, 9.4856



75.9273, -9.8125, 4.1176



75.9273, -4.0392, -1.6402

Rectangle

The Rectangle color scheme consists of four colors that form a rectangle on the color wheel.



75.9256, 1.8806, 4.1470



75.9273, -0.2741, 8.2795



75.9273, -9.8125, 4.1176



75.9273, -7.7640, -0.2615

Sweetspot

The Sweet Spot groups the original color and five complimentary colors.



75.9273, 1.8786, 4.1483



98.2574, -3.3017, 5.3293



75.9248, 2.6386, -1.8102



45.4981, -1.5743, 2.4678

0.0000, NaN, NaN



46.2646, -2.4686, 2.5136

Same Dimension

The Same Dimension uses a secret algorithm to generate beautiful new colors.



75.9273, 1.8786, 4.1483



92.2831, 3.9065, 5.0703



77.0022, -0.8334, 7.2197



35.3146, 1.6305, 1.9431



29.6870, 51.4197, 14.6892



7.3821, 12.9641, 2.2741

Inverse Universe

The Inverse Universe completely reimagines the original color for something new.



75.9273, 1.8786, 4.1483



92.2831, 3.9065, 5.0703



78.4874, -7.2512, 1.1837



35.3146, 1.6305, 1.9431



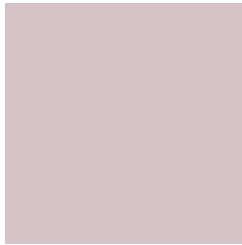
29.6870, 51.4197, 14.6892



7.3821, 12.9641, 2.2741

Previews

White Background



This preview shows how the HunterLab color 75.9256, 1.8806, 4.1470 looks on a white background.

Color Contrast Check

Large Text (above 18pt) WCAG AA × Fail

Any Text WCAG AA × Fail

Large Text (above 18pt) WCAG AAA × Fail

Any Text WCAG AAA × Fail

Black Background



This preview shows how the HunterLab color 75.9256, 1.8806, 4.1470 looks on a black background.

Color Contrast Check

Large Text (above 18pt) WCAG AA ✓ Pass

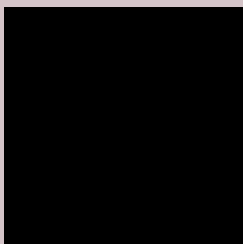
Any Text WCAG AA ✓ Pass

Large Text (above 18pt) WCAG AAA ✓ Pass

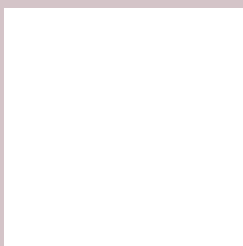
Any Text WCAG AAA ✓ Pass

If you want to check with other color combinations, try the [Color Contrast Checker](#).

HunterLab 75.9256, 1.8806, 4.1470 Background



This preview shows how black text looks on a background with the HunterLab color 75.9256, 1.8806, 4.1470.



This preview shows how white text looks on a background with the HunterLab color 75.9256, 1.8806,

4.1470.

Color Blindness Simulation

Color vision deficiency is a very complex topic, and I could not describe the different causes any better than Wikipedia does, so if you want to learn more, you should check out their [article about color blindness](#).

Dichromacy



Original Color

75.9256, 1.8806, 4.1470

Protanopia

76.0313, -2.2572, 3.2371

Deuteranopia

76.0354, 5.2829, 4.3358



Tritanopia

75.7515, 4.9661, -0.9582

Trichromacy



Original Color

75.9256, 1.8806, 4.1470

Protanomaly

75.9783, -0.9511, 3.6797

Deuteranomaly

76.0258, 3.7411, 4.2976

Tritanomaly

75.9161, 3.7473, 1.2406

Monochromacy



Original Color

75.9256, 1.8806, 4.1470

Achromatopsia

76.4250, -4.0778, 4.1523

Achromatomaly

76.1860, -1.7855, 3.9106

CSS Examples

Text

The CSS property to change the color of the text to HunterLab 75.9256, 1.8806, 4.1470 is called "color". The color property can be set on classes, ids or directly on the HTML element.

This example shows how text in the color `rgb(212, 196, 200)` looks like.

```
.text, #text, p{  
    color:rgb(212, 196, 200)  
}
```

If you want to add a text shadow in that color use the text-shadow property, you can generate a text shadow directly with our [CSS Text Shadow Generator](#).

Here you see how black text with a 4 pixel rgb(212, 196, 200) colored shadow looks like.

```
.shadow{ text-shadow: 4px 4px 2px rgb(212, 196, 200) }
```

Border

The CSS property to change the border of an element to HunterLab 75.9256, 1.8806, 4.1470 is called "border".

The border property can be set on classes, ids or directly on the HTML element.

This example shows the color as border, it can be applied via the CSS property "border" or "border-color".

```
.border, #border, table{ border:4px solid rgb(212, 196, 200) }
```


If only the border color should be changed use the property `border-color`.

```
.border{ border-color:rgb(212, 196, 200) }
```

If you want to add a box shadow in that color use:

Here you see how a box with a 4 pixel `rgb(212, 196, 200)` colored shadow looks like.

```
.boxshadow{ -moz-box-shadow:4px 4px 4px 4px rgb(212, 196, 200); -webkit-box-shadow:4px 4px 4px 4px rgb(212, 196, 200); box-shadow:4px 4px 4px 4px rgb(212, 196, 200) }
```

Background

The CSS property to change the background color of an element to HunterLab 75.9256, 1.8806, 4.1470 is called "background". The background property can be set on classes, ids or directly on the HTML element.

```
.background, #background, body{  
background: rgb(212, 196, 200) }
```

If only the background color should be changed can be used:

```
.background{ background-color: rgb(212,  
196, 200) }
```

This example shows the color as background, it is applied via the CSS property "background".

To optimize and compress your CSS code, you can use our [online CSS compressor and optimizer](#) based on csstidy. If you want to create a linear or radial gradient as background or border, check our [CSS Gradient Generator](#).

Hey! You found this booklet interesting? Support Converting Colors with the new Membership Option!

The pro membership hides all ads, plus gives you double the colors in the color bucket, and more awesome pro features!

[Learn more, Memberships starting at \\$2.50/m!](#)

**Follow me
on Twitter!**

@ConvertingColor