

Converting Colors

HunterLab(75.9471, 1.9145,
7.5233)

Have a look what the booklet for
HunterLab(75.9471, 1.9145, 7.5233)
contains.

HunterLab(76.0113, 1.7509, 7.5151)	3
<i>Conversions</i>	4
<i>Details</i>	6
<i>Harmonies</i>	12
<i>Previews</i>	24
<i>Color Blindness Simulation</i>	28
<i>CSS Examples</i>	31

Color

**HunterLab(76.0113, 1.7509,
7.5151)**

Conversions

Conversions Part 1

Format	Color
Hex	D7C4C1
RGB	215, 196, 193
RGB Percent	84%, 77%, 76%
CMY	0.1569, 0.2314, 0.2431
CMYK	0.00, 0.09, 0.10, 0.16
HSL	8°, 22%, 80%
HSV	8°, 10%, 84%
XYZ	57.3899, 57.7772, 58.5794
YIQ	201.3390, 12.2870, 3.0950

Conversions

Conversions Part 2

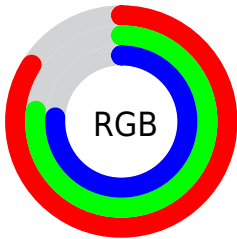
Format	Color
R _Y B	215, 196, 193
Decimal	14140609
CIE Lab	80.62, 6.16, 3.91
CIE LCh	81, 7.299, 32.430
Yxy	57.7797, 0.3303, 0.3325
Android (android.graphics.Color)	4292330689 (0xFFD7C4C1)
YUV	201.3390, -4.1111, 11.9807
Hunter-Lab	76.0113, 1.7509, 7.5151

Details

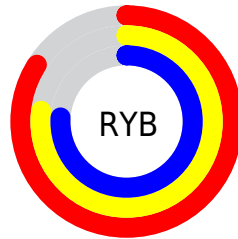
The HunterLab color **76.0113, 1.7509, 7.5151** is a light color, and the websafe version is hex **CCCCCC**. A complement of this color would be **79.5798, -9.6146, 0.9694**, and the grayscale version is **76.5843, -4.0863, 4.1610**.

A 20% lighter version of the original color is **99.1716, -5.3233, 7.4348**, and **53.5845, 2.5110, 5.6098** is the 20% darker color. If you saturate the color by 10%, you get **70.0181, 8.0775, 10.4489**, and if you desaturate by 10%, it is **82.2860, -4.2624, 4.5481**.

Distribution



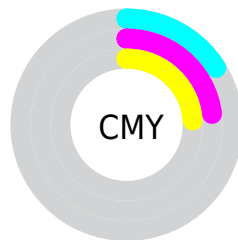
- Red (84%)
- Green (77%)
- Blue (76%)



- Red (84%)
- Yellow (77%)
- Blue (76%)



- Cyan (0%)
- Magenta (9%)
- Yellow (10%)
- Black (16%)



- Cyan (16%)
- Magenta (23%)
- Yellow (24%)

Brightness & Saturation Gradients

These gradients show how the HunterLab color 76.0113, 1.7509, 7.5151 changes by changing the brightness by 10 percent. The first figure shows a shift by +10% for each color and the second figure -10%.

Similar to the brightness gradients but the following saturation gradients show a change of the HunterLab color 76.0113, 1.7509, 7.5151 by changing the saturation by 10% instead.

■ 76.0113, 1.7509,
7.5151

■ 76.0113, 1.7509,
7.5151

204.0502, -2.8828,
15.8566

■ 64.5225, 2.0630,
6.7025

■ 100.7978, 0.9818,
9.2138

■ 53.6777, 2.3256,
5.9120

114.0373, 0.5356,
10.0970

■ 43.5194, 2.5309,
5.1446

127.8104, 0.0510,
11.0027

■ 34.0976, 2.6718,
4.3994

142.0973, -0.4698,
11.9306

■ 25.4752, 2.7382,
3.6745

156.8801, -1.0252,
12.8803

■ 17.7346, 2.7157,
2.9657

172.1427, -1.6134,

■ 10.9909, 2.5813,

13.8515

2.2635

187.8706, -2.2330,
14.8437

■ 2.6118, 10.1394,
1.8282

0.0000, NaN, NaN

■ 76.0113, 1.7509,
7.5151

■ 76.0113, 1.7509,
7.5151

■ 70.0181, 8.0775,
10.4489

■ 82.2860, -4.2624,
4.5481

■ 64.3452, 14.7455,
13.3196

■ 88.8016, -9.9881,
1.5594

■ 59.0478, 21.7501,
16.0859

■ 95.4457, -15.9379,
-0.2353

■ 54.1903, 29.0426,
18.6810

■ 96.5335, -17.6134,
1.0680

■ 49.8478, 36.4963,
21.0081

■ 46.1026, 43.8708,
22.9382

■ 43.0358, 50.7901,
24.3247

■ 40.7109, 56.7687,
25.0464

■ 39.1708, 61.2004,
25.2083

Harmonies

Analogous

The Analogous color harmony consists of three colors that are next to each other on the color wheel.



76.0130, 2.8345, 4.4106



76.0113, 1.7509, 7.5151



76.0130, -0.8959, 9.6366

Triad

The Triadic color harmony groups three colors that are evenly spaced from another and form a triangle on the color wheel.



76.0130, 1.7488, 7.5163



76.0130, -9.9782, 7.0630



76.0130, -3.7721, -2.5936

Complementary

The Complementary color scheme is a pair of colors which are on the opposite of each other on the color wheel.



76.0113, 1.7509, 7.5151



79.5798, -9.6146, 0.9694

Split Complementary

Split-complementary colors differ from the complementary color scheme. The scheme consists of three colors, the original color and two neighbors of the complement color.



76.0130, -7.1730, -1.8057



76.0113, 1.7509, 7.5151



76.0130, -10.7171, 3.8635

Square

The Square scheme is like the rectangle color scheme, but the four colors are evenly spaced on the color wheel.



76.0130, 1.7488, 7.5163



76.0130, -7.6624, 9.3834



76.0130, -9.6993, 0.5963



76.0130, -0.3891, -1.5110

Rectangle

The Rectangle color scheme consists of four colors that form a rectangle on the color wheel.



76.0113, 1.7509, 7.5151



76.0130, -3.1646, 10.2584



76.0130, -9.6993, 0.5963



76.0130, -4.9512, -2.5387

Sweetspot

The Sweet Spot groups the original color and five complimentary colors.



76.0130, 1.7488, 7.5163



97.6600, -3.1679, 6.5273



75.7262, 6.5220, -2.0267



44.8948, -1.1950, 3.1549

0.0000, NaN, NaN



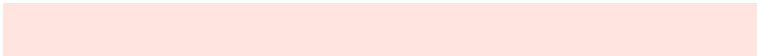
46.2646, -2.4686, 2.5136

Same Dimension

The Same Dimension uses a secret algorithm to generate beautiful new colors.



76.0130, 1.7488, 7.5163



90.8125, 3.5373, 9.7922



79.3041, -3.8510, 11.0794



35.6251, 0.5812, 3.3877



30.4418, 46.8482, 19.5782



8.0603, 9.7065, 5.1366

Inverse Universe

The Inverse Universe completely reimagines the original color for something new.



79.5798, -9.6146, 0.9694



95.9241, -12.7543, 0.4083



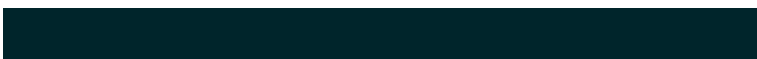
76.1898, -4.0993, -3.1541



37.1553, -4.2930, 0.5792



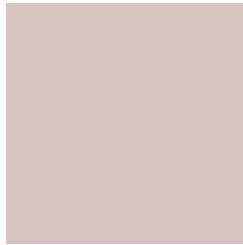
48.9537, -20.5772, -16.7675



12.3576, -5.4833, -3.6090

Previews

White Background



This preview shows how the HunterLab color 76.0113, 1.7509, 7.5151 looks on a white background.

Color Contrast Check

Large Text (above 18pt) WCAG AA × Fail

Any Text WCAG AA × Fail

Large Text (above 18pt) WCAG AAA × Fail

Any Text WCAG AAA × Fail

Black Background



This preview shows how the HunterLab color 76.0113, 1.7509, 7.5151 looks on a black background.

Color Contrast Check

Large Text (above 18pt) WCAG AA ✓ Pass

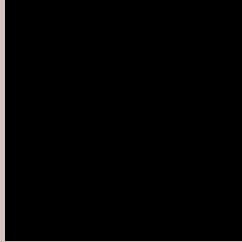
Any Text WCAG AA ✓ Pass

Large Text (above 18pt) WCAG AAA ✓ Pass

Any Text WCAG AAA ✓ Pass

If you want to check with other color combinations, try the [Color Contrast Checker](#).

HunterLab 76.0113, 1.7509, 7.5151 Background



This preview shows how black text looks on a background with the HunterLab color 76.0113, 1.7509, 7.5151.



This preview shows how white text looks on a background with the HunterLab color 76.0113, 1.7509,

7.5151.

Color Blindness Simulation

Color vision deficiency is a very complex topic, and I could not describe the different causes any better than Wikipedia does, so if you want to learn more, you should check out their [article about color blindness](#).

Dichromacy



Original Color

76.0113, 1.7509, 7.5151

Protanopia

76.0040, -2.7780, 6.5088

Deuteranopia

75.8418, 5.7142, 7.3920



Tritanopia

76.1175, 6.1276, 0.0244

Trichromacy



Original Color

76.0113, 1.7509, 7.5151

Protanomaly

76.0516, -1.1225, 7.0530

Deuteranomaly

75.8247, 4.1533, 7.3453

Tritanomaly

76.1189, 4.2413, 2.9699

Monochromacy



Original Color

76.0113, 1.7509, 7.5151

Achromatopsia

76.4250, -4.0778, 4.1523

Achromatomaly

76.1878, -1.9625, 5.3356

CSS Examples

Text

The CSS property to change the color of the text to HunterLab 76.0113, 1.7509, 7.5151 is called "color". The color property can be set on classes, ids or directly on the HTML element.

This example shows how text in the color `rgb(215, 196, 193)` looks like.

```
.text, #text, p{  
    color:rgb(215, 196, 193)  
}
```

If you want to add a text shadow in that color use the text-shadow property, you can generate a text shadow directly with our [CSS Text Shadow Generator](#).

Here you see how black text with a 4 pixel rgb(215, 196, 193) colored shadow looks like.

```
.shadow{ text-shadow: 4px 4px 2px rgb(215, 196, 193) }
```

Border

The CSS property to change the border of an element to HunterLab 76.0113, 1.7509, 7.5151 is called "border". The border property can be set on classes, ids or directly on the HTML element.

This example shows the color as border, it can be applied via the CSS property "border" or "border-color".

```
.border, #border, table{ border:4px solid rgb(215, 196, 193) }
```


If only the border color should be changed use the property `border-color`.

```
.border{ border-color:rgb(215, 196, 193) }
```

If you want to add a box shadow in that color use:

Here you see how a box with a 4 pixel `rgb(215, 196, 193)` colored shadow looks like.

```
.boxshadow{ -moz-box-shadow:4px 4px 4px  
4px rgb(215, 196, 193); -webkit-box-  
shadow:4px 4px 4px 4px rgb(215, 196, 193);  
box-shadow:4px 4px 4px 4px rgb(215, 196,  
193) }
```

Background

The CSS property to change the background color of an element to HunterLab 76.0113, 1.7509, 7.5151 is called "background". The background property can be set on classes, ids or directly on the HTML element.

```
.background, #background, body{  
background: rgb(215, 196, 193) }
```

If only the background color should be changed can be used:

```
.background{ background-color: rgb(215,  
196, 193) }
```

This example shows the color as background, it is applied via the CSS property "background".

To optimize and compress your CSS code, you can use our [online CSS compressor and optimizer](#) based on csstidy. If you want to create a linear or radial gradient as background or border, check our [CSS Gradient Generator](#).

Hey! You found this booklet interesting? Support Converting Colors with the new Membership Option!

The pro membership hides all ads, plus gives you double the colors in the color bucket, and more awesome pro features!

[Learn more, Memberships starting at \\$2.50/m!](#)

**Follow me
on Twitter!**

@ConvertingColor