

Converting Colors

HunterLab(76.0821, 7.1128,
5.8860)

Have a look what the booklet for
HunterLab(76.0821, 7.1128, 5.8860)
contains.

HunterLab(76.1698, 7.0483, 5.9416)	3
<i>Conversions</i>	4
<i>Details</i>	6
<i>Harmonies</i>	12
<i>Previews</i>	24
<i>Color Blindness Simulation</i>	28
<i>CSS Examples</i>	31

Color

**HunterLab(76.1698, 7.0483,
5.9416)**

Conversions

Conversions Part 1

Format	Color
Hex	E0C1C5
RGB	224, 193, 197
RGB Percent	88%, 76%, 77%
CMY	0.1216, 0.2431, 0.2274
CMYK	0.00, 0.14, 0.12, 0.12
HSL	352°, 33%, 82%
HSV	352°, 14%, 88%
XYZ	59.8884, 58.0184, 60.8655
YIQ	202.7250, 17.1920, 7.8160

Conversions

Conversions Part 2

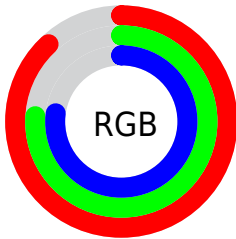
Format	Color
RYB	224, 193, 197
Decimal	14729669
CIELab	80.75, 11.63, 2.06
CIELCh	81, 11.809, 10.031
Yxy	58.0210, 0.3350, 0.3245
Android (android.graphics.Color)	4292919749 (0xFFE0C1C5)
YUV	202.7250, -2.8224, 18.6582
Hunter-Lab	76.1698, 7.0483, 5.9416

Details

The HunterLab color $76.1698, 7.0483, 5.9416$ is a light color, and the websafe version is hex FFCCCC . A complement of this color would be $83.5568, -14.6977, 3.1821$, and the grayscale version is $77.1692, -4.1176, 4.1928$.

A 20% lighter version of the original color is $98.0648, -2.3234, 3.6955$, and $53.7433, 7.4254, 4.5778$ is the 20% darker color. If you saturate the color by 10%, you get $69.2952, 15.8090, 7.1677$, and if you desaturate by 10%, it is $83.4503, -1.4295, 4.9919$.

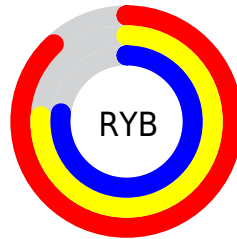
Distribution



Red (88%)

Green (76%)

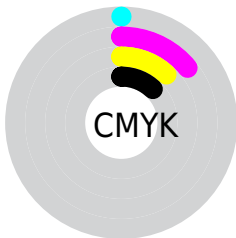
Blue (77%)



Red (88%)

Yellow (76%)

Blue (77%)

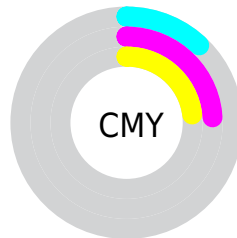


Cyan (0%)

Magenta (14%)

Yellow (12%)

Black (12%)



Cyan (12%)


Magenta (24%)


Yellow (23%)

Brightness & Saturation Gradients


These gradients show how the HunterLab color 76.1698, 7.0483, 5.9416 changes by changing the brightness by 10 percent. The first figure shows a shift by +10% for each color and the second figure -10%.


Similar to the brightness gradients but the following saturation gradients show a change of the HunterLab color 76.1698, 7.0483, 5.9416 by changing the saturation by 10% instead.


 76.1698, 7.0483,
5.9416

 76.1698, 7.0483,
5.9416


204.2704, 4.3266,
13.6301

 64.6726, 7.1037,
5.2192


 100.9720, 6.7586,
7.4740

 53.8188, 7.0961,
4.5246

114.2187, 6.5379,
8.2797

 43.6510, 7.0155,
3.8601


127.9989, 6.2707,
9.1111

 34.2190, 6.8514,
3.2267

142.2925, 5.9599,
9.9675

 25.5854, 6.5899,
2.6251

157.0819, 5.6080,
10.8481

 17.8323, 6.2111,
2.0557


172.3509, 5.2173,

 11.0741, 5.6853,


11.7525


1.5172


188.0848, 4.7896,
12.6800


 2.8823, 17.4252,
2.0176


0.0000, NaN, NaN


 76.1698, 7.0483,
5.9416


 76.1698, 7.0483,
5.9416


 69.2952, 15.8090,
7.1677


 83.4503, -1.4295,
4.9919

 62.8963, 24.8286,
8.7079

 91.0719, -9.6273,
4.2735

 57.0682, 33.9953,
10.5957

 97.2561, -15.0170,
1.9903

 51.9225, 43.0671,
12.8362

■ 47.5839, 51.6115,
15.3783

■ 44.1735, 58.9943,
18.0844

■ 41.7759, 64.4953,
20.7219

■ 40.3927, 67.6033,
23.0069

■ 39.9193, 68.5838,
24.0840

Harmonies

Analogous

The Analogous color harmony consists of three colors that are next to each other on the color wheel.



76.1715, 6.5266, 0.4929



76.1698, 7.0483, 5.9416



76.1715, 4.5210, 10.5620

Triad

The Triadic color harmony groups three colors that are evenly spaced from another and form a triangle on the color wheel.



76.1715, 7.0460, 5.9429



76.1715, -11.0017, 11.7168



76.1715, -7.7814, -6.3365

Complementary

The Complementary color scheme is a pair of colors which are on the opposite of each other on the color wheel.



76.1698, 7.0483, 5.9416



83.5568, -14.6977, 3.1821

Split Complementary

Split-complementary colors differ from the complementary color scheme. The scheme consists of three colors, the original color and two neighbors of the complement color.



76.1715, -12.2933, -2.8813



76.1698, 7.0483, 5.9416



76.1715, -14.1142, 7.6271

Square

The Square scheme is like the rectangle color scheme, but the four colors are evenly spaced on the color wheel.



76.1715, 7.0460, 5.9429



76.1715, -5.9712, 13.7295



76.1715, -14.5800, 2.3047



76.1715, -2.1468, -6.8707

Rectangle

The Rectangle color scheme consists of four colors that form a rectangle on the color wheel.



76.1698, 7.0483, 5.9416



76.1715, 1.4934, 12.6496



76.1715, -14.5800, 2.3047



76.1715, -9.4750, -5.4667

Sweetspot

The Sweet Spot groups the original color and five complimentary colors.



76.1715, 7.0460, 5.9429



96.4908, -1.4707, 5.8003



76.6285, 10.3269, -7.1660



44.3390, -0.3414, 2.7176

0.0000, NaN, NaN



46.2646, -2.4686, 2.5136

Same Dimension

The Same Dimension uses a secret algorithm to generate beautiful new colors.



76.1715, 7.0460, 5.9429



85.5537, 11.4594, 7.3120



79.4103, 0.5047, 11.2698



37.0529, 1.5360, 2.5663



30.4711, 52.3816, 18.1480



8.0812, 14.0088, 3.9089

Inverse Universe

The Inverse Universe completely reimagines the original color for something new.



76.1715, 7.0460, 5.9429



85.5537, 11.4594, 7.3120



80.0784, -8.2856, -3.0153



37.0529, 1.5360, 2.5663



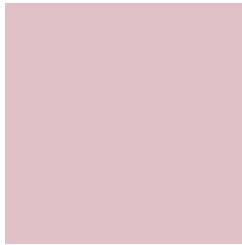
30.4711, 52.3816, 18.1480



8.0812, 14.0088, 3.9089

Previews

White Background



This preview shows how the HunterLab color 76.1698, 7.0483, 5.9416 looks on a white background.

Color Contrast Check

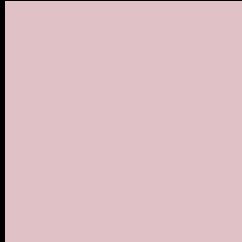
Large Text (above 18pt) WCAG AA × Fail

Any Text WCAG AA × Fail

Large Text (above 18pt) WCAG AAA × Fail

Any Text WCAG AAA × Fail

Black Background



This preview shows how the HunterLab color 76.1698, 7.0483, 5.9416 looks on a black background.

Color Contrast Check

Large Text (above 18pt) WCAG AA ✓ Pass

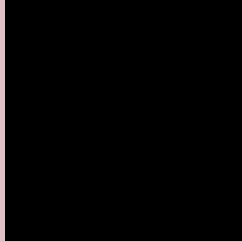
Any Text WCAG AA ✓ Pass

Large Text (above 18pt) WCAG AAA ✓ Pass

Any Text WCAG AAA ✓ Pass

If you want to check with other color combinations, try the [Color Contrast Checker](#).

HunterLab 76.1698, 7.0483, 5.9416 Background



This preview shows how black text looks on a background with the HunterLab color 76.1698, 7.0483, 5.9416.



This preview shows how white text looks on a background with the HunterLab color 76.1698, 7.0483,

Color Blindness Simulation

Color vision deficiency is a very complex topic, and I could not describe the different causes any better than Wikipedia does, so if you want to learn more, you should check out their [article about color blindness](#).

Dichromacy



Original Color

76.1698, 7.0483, 5.9416

Protanopia

76.3957, -2.6166, 4.1433

Deuteranopia

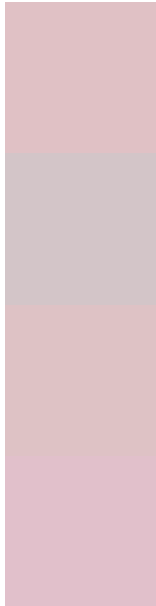
76.1492, 5.4821, 5.8903



Tritanopia

76.2647, 9.4065, 1.7629

Trichromacy



Original Color

76.1698, 7.0483, 5.9416

Protanomaly

76.1259, 1.0325, 4.3678

Deuteranomaly

76.2525, 5.8282, 6.0157

Tritanomaly

76.1700, 8.9038, 3.1124

Monochromacy



Original Color

76.1698, 7.0483, 5.9416

Achromatopsia

77.2788, -4.1234, 4.1987

Achromatomaly

76.7547, 0.1683, 4.6139

CSS Examples

Text

The CSS property to change the color of the text to HunterLab 76.1698, 7.0483, 5.9416 is called "color". The color property can be set on classes, ids or directly on the HTML element.

This example shows how text in the color `rgb(224, 193, 197)` looks like.

```
.text, #text, p{  
    color:rgb(224, 193, 197)  
}
```

If you want to add a text shadow in that color use the text-shadow property, you can generate a text shadow directly with our [CSS Text Shadow Generator](#).

Here you see how black text with a 4 pixel rgb(224, 193, 197) colored shadow looks like.

```
.shadow{ text-shadow: 4px 4px 2px rgb(224, 193, 197) }
```

Border

The CSS property to change the border of an element to HunterLab 76.1698, 7.0483, 5.9416 is called "border". The border property can be set on classes, ids or directly on the HTML element.

This example shows the color as border, it can be applied via the CSS property "border" or "border-color".

```
.border, #border, table{ border:4px solid rgb(224, 193, 197) }
```


If only the border color should be changed use the property `border-color`.

```
.border{ border-color:rgb(224, 193, 197) }
```

If you want to add a box shadow in that color use:

Here you see how a box with a 4 pixel `rgb(224, 193, 197)` colored shadow looks like.

```
.boxshadow{ -moz-box-shadow:4px 4px 4px  
4px rgb(224, 193, 197); -webkit-box-  
shadow:4px 4px 4px 4px rgb(224, 193, 197);  
box-shadow:4px 4px 4px 4px rgb(224, 193,  
197) }
```

Background

The CSS property to change the background color of an element to HunterLab 76.1698, 7.0483, 5.9416 is called "background". The background property can be set on classes, ids or directly on the HTML element.

```
.background, #background, body{  
background: rgb(224, 193, 197) }
```

If only the background color should be changed can be used:

```
.background{ background-color: rgb(224,  
193, 197) }
```

This example shows the color as background, it is applied via the CSS property "background".

To optimize and compress your CSS code, you can use our [online CSS compressor and optimizer](#) based on csstidy. If you want to create a linear or radial gradient as background or border, check our [CSS Gradient Generator](#).

Hey! You found this booklet interesting? Support Converting Colors with the new Membership Option!

The pro membership hides all ads, plus gives you double the colors in the color bucket, and more awesome pro features!

[Learn more, Memberships starting at \\$2.50/m!](#)

**Follow me
on Twitter!**

@ConvertingColor