

Converting Colors

HunterLab(76.1271, 3.5909,
3.9991)

Have a look what the booklet for
HunterLab(76.1271, 3.5909, 3.9991)
contains.

HunterLab(76.0567, 3.9069, 3.8575)	3
<i>Conversions</i>	4
<i>Details</i>	6
<i>Harmonies</i>	12
<i>Previews</i>	24
<i>Color Blindness Simulation</i>	28
<i>CSS Examples</i>	31

Color

**HunterLab(76.0567, 3.9069,
3.8575)**

Conversions

Conversions Part 1

Format	Color
Hex	D8C3C9
RGB	216, 195, 201
RGB Percent	85%, 76%, 79%
CMY	0.1529, 0.2353, 0.2118
CMYK	0.00, 0.10, 0.07, 0.15
HSL	343°, 21%, 81%
HSV	343°, 10%, 85%
XYZ	58.3767, 57.8462, 63.3470
YIQ	201.9630, 10.5900, 6.3180

Conversions

Conversions Part 2

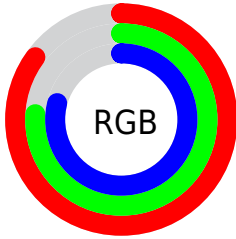
Format	Color
R _Y B	216, 195, 201
Decimal	14205897
CIE Lab	80.65, 8.40, -0.32
CIE LCh	81, 8.410, 357.836
Yxy	57.8488, 0.3251, 0.3221
Android (android.graphics.Color)	4292395977 (0xFFD8C3C9)
YUV	201.9630, -0.4748, 12.3104
Hunter-Lab	76.0567, 3.9069, 3.8575

Details

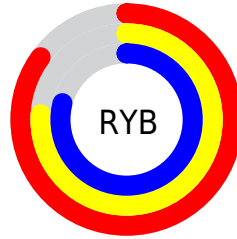
The HunterLab color $76.0567, 3.9069, 3.8575$ is a light color, and the websafe version is hex $CCCCCC$. A complement of this color would be $80.8508, -11.9002, 4.8963$, and the grayscale version is $76.8362, -4.0998, 4.1747$.

A 20% lighter version of the original color is $99.0459, -3.7429, 4.3328$, and $53.6035, 4.3932, 2.5751$ is the 20% darker color. If you saturate the color by 10%, you get $69.4037, 12.6888, 3.5079$, and if you desaturate by 10%, it is $83.0674, -4.6581, 4.5247$.

Distribution



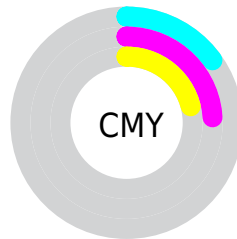
- Red (85%)
- Green (76%)
- Blue (79%)



- Red (85%)
- Yellow (76%)
- Blue (79%)



- Cyan (0%)
- Magenta (10%)
- Yellow (7%)
- Black (15%)



- Cyan (15%)
- Magenta (24%)
- Yellow (21%)

Brightness & Saturation Gradients

These gradients show how the HunterLab color 76.0567, 3.9069, 3.8575 changes by changing the brightness by 10 percent. The first figure shows a shift by +10% for each color and the second figure -10%.

Similar to the brightness gradients but the following saturation gradients show a change of the HunterLab color 76.0567, 3.9069, 3.8575 by changing the saturation by 10% instead.

76.0567, 3.9069,
3.8575

76.0567, 3.9069,
3.8575

204.1132, 0.0631,
10.7199

64.5655, 4.1127,
3.2481

100.8477, 3.3363,
5.1805

53.7181, 4.2632,
2.6734

114.0892, 2.9833,
5.8883

43.5571, 4.3496,
2.1371

127.8644, 2.5886,
6.6257

34.1323, 4.3634,
1.6423

142.1532, 2.1544,
7.3915

25.5067, 4.2926,
1.1926

156.9379, 1.6831,
8.1847

17.7626, 4.1203,
0.7931

172.2024, 1.1764,

11.0147, 3.8196,

9.0044

0.4511

187.9319, 0.6359,
9.8497

2.6921, 13.4586,
-0.3425

0.0000, NaN, NaN

76.0567, 3.9069,
3.8575

76.0567, 3.9069,
3.8575

69.4037, 12.6888,
3.5079

83.0674, -4.6581,
4.5247

63.1663, 21.6665,
3.5410

90.3805, -13.0049,
5.4488

57.4244, 30.7484,
4.0380

96.3601, -18.7442,
4.7580

52.2727, 39.7398,
5.0806

96.6122, -17.3298,
1.1687

■ 47.8200, 48.2902,
6.7330

■ 44.1790, 55.8645,
9.0057

■ 41.4439, 61.7995,
11.8100

■ 39.6540, 65.5098,
14.9304

■ 38.6799, 67.0559,
17.9961

Harmonies

Analogous

The Analogous color harmony consists of three colors that are next to each other on the color wheel.



76.0584, 2.6662, 0.0756



76.0567, 3.9069, 3.8575



76.0584, 2.9717, 7.5298

Triad

The Triadic color harmony groups three colors that are evenly spaced from another and form a triangle on the color wheel.



76.0584, 3.9048, 3.8588



76.0584, -7.6768, 10.4244



76.0584, -8.1777, -2.4251

Complementary

The Complementary color scheme is a pair of colors which are on the opposite of each other on the color wheel.



76.0567, 3.9069, 3.8575



80.8508, -11.9002, 4.8963

Split Complementary

Split-complementary colors differ from the complementary color scheme. The scheme consists of three colors, the original color and two neighbors of the complement color.



76.0584, -10.8498, 0.5867



76.0567, 3.9069, 3.8575



76.0584, -10.5649, 7.9919

Square

The Square scheme is like the rectangle color scheme, but the four colors are evenly spaced on the color wheel.



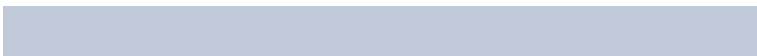
76.0584, 3.9048, 3.8588



76.0584, -3.7670, 11.1999



76.0584, -11.7145, 4.4203



76.0584, -4.3573, -3.6689

Rectangle

The Rectangle color scheme consists of four colors that form a rectangle on the color wheel.



76.0567, 3.9069, 3.8575



76.0584, 1.2544, 9.4463



76.0584, -11.7145, 4.4203



76.0584, -9.2370, -1.5784

Sweetspot

The Sweet Spot groups the original color and five complimentary colors.



76.0584, 3.9048, 3.8588



97.4006, -2.2326, 5.1568



75.9266, 4.4355, -3.8682



44.7433, -0.6473, 2.3540

0.0000, NaN, NaN



46.2646, -2.4686, 2.5136

Same Dimension

The Same Dimension uses a secret algorithm to generate beautiful new colors.



76.0584, 3.9048, 3.8588



89.8208, 7.2245, 4.5178



77.1236, 0.7556, 7.8428



35.3250, 1.6865, 1.7947



29.7676, 51.7170, 13.5060



7.4073, 13.0562, 1.9101

Inverse Universe

The Inverse Universe completely reimagines the original color for something new.



76.0584, 3.9048, 3.8588



89.8208, 7.2245, 4.5178



79.7175, -8.7480, 0.6494



35.3250, 1.6865, 1.7947



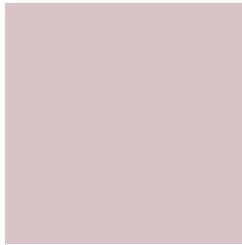
29.7676, 51.7170, 13.5060



7.4073, 13.0562, 1.9101

Previews

White Background



This preview shows how the HunterLab color 76.0567, 3.9069, 3.8575 looks on a white background.

Color Contrast Check

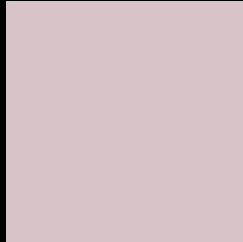
Large Text (above 18pt) WCAG AA × Fail

Any Text WCAG AA × Fail

Large Text (above 18pt) WCAG AAA × Fail

Any Text WCAG AAA × Fail

Black Background



This preview shows how the HunterLab color 76.0567, 3.9069, 3.8575 looks on a black background.

Color Contrast Check

Large Text (above 18pt) WCAG AA ✓ Pass

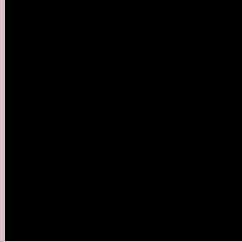
Any Text WCAG AA ✓ Pass

Large Text (above 18pt) WCAG AAA ✓ Pass

Any Text WCAG AAA ✓ Pass

If you want to check with other color combinations, try the [Color Contrast Checker](#).

HunterLab 76.0567, 3.9069, 3.8575 Background



This preview shows how black text looks on a background with the HunterLab color 76.0567, 3.9069, 3.8575.



This preview shows how white text looks on a background with the HunterLab color 76.0567, 3.9069,

3.8575.

Color Blindness Simulation

Color vision deficiency is a very complex topic, and I could not describe the different causes any better than Wikipedia does, so if you want to learn more, you should check out their [article about color blindness](#).

Dichromacy



Original Color

76.0567, 3.9069, 3.8575

Protanopia

76.0626, -2.0868, 2.7918

Deuteranopia

76.0662, 5.4481, 3.8958



Tritanopia

76.1175, 6.1276, 0.0244

Trichromacy



Original Color

76.0567, 3.9069, 3.8575

Protanomaly

76.1986, -0.1328, 3.4731

Deuteranomaly

75.9645, 5.1068, 3.7694

Tritanomaly

76.0207, 5.6101, 1.4004

Monochromacy



Original Color

76.0567, 3.9069, 3.8575

Achromatopsia

76.8517, -4.1006, 4.1755

Achromatomaly

76.4045, -0.9711, 3.7024

CSS Examples

Text

The CSS property to change the color of the text to HunterLab 76.0567, 3.9069, 3.8575 is called "color". The color property can be set on classes, ids or directly on the HTML element.

This example shows how text in the color `rgb(216, 195, 201)` looks like.

```
.text, #text, p{  
    color:rgb(216, 195, 201)  
}
```

If you want to add a text shadow in that color use the text-shadow property, you can generate a text shadow directly with our [CSS Text Shadow Generator](#).

Here you see how black text with a 4 pixel rgb(216, 195, 201) colored shadow looks like.

```
.shadow{ text-shadow: 4px 4px 2px rgb(216, 195, 201) }
```

Border

The CSS property to change the border of an element to HunterLab 76.0567, 3.9069, 3.8575 is called "border". The border property can be set on classes, ids or directly on the HTML element.

This example shows the color as border, it can be applied via the CSS property "border" or "border-color".

```
.border, #border, table{ border:4px solid rgb(216, 195, 201) }
```


If only the border color should be changed use the property `border-color`.

```
.border{ border-color:rgb(216, 195, 201) }
```

If you want to add a box shadow in that color use:

Here you see how a box with a 4 pixel `rgb(216, 195, 201)` colored shadow looks like.

```
.boxshadow{ -moz-box-shadow:4px 4px 4px  
4px rgb(216, 195, 201); -webkit-box-  
shadow:4px 4px 4px 4px rgb(216, 195, 201);  
box-shadow:4px 4px 4px 4px rgb(216, 195,  
201) }
```

Background

The CSS property to change the background color of an element to HunterLab 76.0567, 3.9069, 3.8575 is called "background". The background property can be set on classes, ids or directly on the HTML element.

```
.background, #background, body{  
background: rgb(216, 195, 201) }
```

If only the background color should be changed can be used:

```
.background{ background-color: rgb(216,  
195, 201) }
```

This example shows the color as background, it is applied via the CSS property "background".

To optimize and compress your CSS code, you can use our [online CSS compressor and optimizer](#) based on csstidy. If you want to create a linear or radial gradient as background or border, check our [CSS Gradient Generator](#).

Hey! You found this booklet interesting? Support Converting Colors with the new Membership Option!

The pro membership hides all ads, plus gives you double the colors in the color bucket, and more awesome pro features!

[Learn more, Memberships starting at \\$2.50/m!](#)

**Follow me
on Twitter!**

@ConvertingColor