

Converting Colors

HunterLab(76.1350, -0.2787,
17.6776)

Have a look what the booklet for
HunterLab(76.1350, -0.2787,
17.6776) contains.

HunterLab(76.1661, -0.5445, 17.7044)	3
<i>Conversions</i>	4
<i>Details</i>	6
<i>Harmonies</i>	12
<i>Previews</i>	24
<i>Color Blindness Simulation</i>	28
<i>CSS Examples</i>	31

Color

**HunterLab(76.1661, -0.5445,
17.7044)**

Conversions

Conversions Part 1

Format	Color
Hex	DCC5A9
RGB	220, 197, 169
RGB Percent	86%, 77%, 66%
CMY	0.1373, 0.2274, 0.3372
CMYK	0.00, 0.10, 0.23, 0.14
HSL	33°, 42%, 76%
HSV	33°, 23%, 86%
XYZ	56.6429, 58.0127, 45.7483
YIQ	200.6850, 22.6960, -3.8320

Conversions

Conversions Part 2

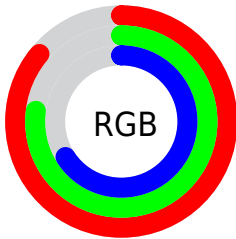
Format	Color
R_{YB}	211, 220, 169
Decimal	14468521
CIE Lab	80.75, 3.75, 17.01
CIE LCh	81, 17.417, 77.554
Yxy	58.0154, 0.3531, 0.3617
Android (android.graphics.Color)	4292658601 (0xFFDCC5A9)
YUV	200.6850, -15.6207, 16.9393
Hunter-Lab	76.1661, -0.5445, 17.7044

Details

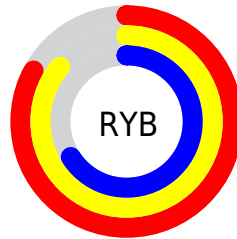
The HunterLab color $76.1661, -0.5445, 17.7044$ is a light color, and the websafe version is hex $CCCC99$. A complement of this color would be $71.6242, -5.3947, -12.0102$, and the grayscale version is $76.3498, -4.0738, 4.1482$.

A 20% lighter version of the original color is $98.7550, -9.8994, 18.3400$, and $53.6859, 0.2877, 14.4997$ is the 20% darker color. If you saturate the color by 10%, you get $72.7320, 1.7382, 22.3449$, and if you desaturate by 10%, it is $79.7288, -2.4765, 12.4299$.

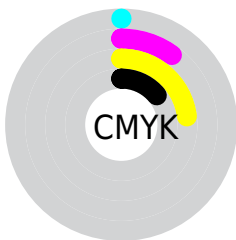
Distribution



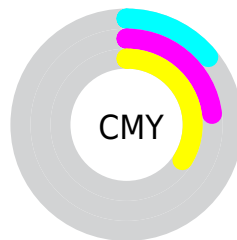
- Red (86%)
- Green (77%)
- Blue (66%)



- Red (83%)
- Yellow (86%)
- Blue (66%)



- Cyan (0%)
- Magenta (10%)
- Yellow (23%)
- Black (14%)



- Cyan (14%)
- Magenta (23%)
- Yellow (34%)

Brightness & Saturation Gradients

These gradients show how the HunterLab color 76.1661, -0.5445, 17.7044 changes by changing the brightness by 10 percent. The first figure shows a shift by +10% for each color and the second figure -10%.

Similar to the brightness gradients but the following saturation gradients show a change of the HunterLab color 76.1661, -0.5445, 17.7044 by changing the saturation by 10% instead.

■ 76.1661, -0.5445,
17.7044

■ 76.1661, -0.5445,
17.7044

204.2653, -6.0389,
30.9312

■ 64.6692, -0.1163,
16.2043

■ 100.9679, -1.5306,
20.6618

■ 53.8156, 0.2693,
14.6776

114.2145, -2.0785,
22.1276

■ 43.6480, 0.6053,
13.1136

127.9945, -2.6609,
23.5901

■ 34.2162, 0.8864,
11.4954

142.2880, -3.2762,
25.0520

■ 25.5828, 1.1049,
9.7967

157.0772, -3.9229,
26.5156

■ 17.8300, 1.2498,
7.9745

172.3461, -4.5997,

■ 11.0722, 1.3039,

27.9824

7.1808

188.0799, -5.3054,
29.4539

■ 2.8764, 5.5332,
2.0135

0.0000, NaN, NaN

■ 76.1661, -0.5445,
17.7044

■ 76.1661, -0.5445,
17.7044

■ 72.7320, 1.7382,
22.3449

■ 79.7288, -2.4765,
12.4299

■ 69.4309, 4.3986,
26.2913

■ 83.4060, -4.0725,
6.5731

■ 66.2744, 7.4494,
29.4884

■ 87.1914, -5.3576,
0.1862

■ 63.2729, 10.8991,
31.8844

■ 91.0062, -6.7457,
-5.6769

■ 60.4366, 14.7448,
33.4395

■ 94.1887, -11.8835,
-1.7232

■ 57.7751, 18.9679,
34.1365

■ 96.9308, -16.1835,
1.5759

■ 55.2957, 23.5262,
34.0002

■ 53.7056, 26.7608,
33.5616

Harmonies

Analogous

The Analogous color harmony consists of three colors that are next to each other on the color wheel.



76.1678, 7.1707, 14.6587



76.1661, -0.5445, 17.7044



76.1678, -8.8904, 17.4182

Triad

The Triadic color harmony groups three colors that are evenly spaced from another and form a triangle on the color wheel.



76.1678, -0.5469, 17.7055



76.1678, -18.8995, -0.6473



76.1678, 8.2520, -6.9992

Complementary

The Complementary color scheme is a pair of colors which are on the opposite of each other on the color wheel.



76.1661, -0.5445, 17.7044



71.6242, -5.3947, -12.0102

Split Complementary

Split-complementary colors differ from the complementary color scheme. The scheme consists of three colors, the original color and two neighbors of the complement color.



76.1678, 0.8770, -12.0502



76.1661, -0.5445, 17.7044



76.1678, -14.6910, -8.1182

Square

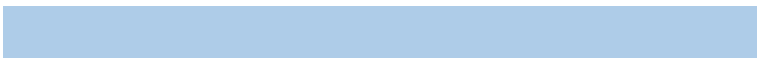
The Square scheme is like the rectangle color scheme, but the four colors are evenly spaced on the color wheel.



76.1678, -0.5469, 17.7055



76.1678, -19.2435, 7.3916



76.1678, -7.5267, -12.4806



76.1678, 12.3968, 0.7510

Rectangle

The Rectangle color scheme consists of four colors that form a rectangle on the color wheel.



76.1661, -0.5445, 17.7044



76.1678, -13.6881, 15.3743



76.1678, -7.5267, -12.4806



76.1678, 6.0542, -9.1039

Sweetspot

The Sweet Spot groups the original color and five complimentary colors.



76.1678, -0.5469, 17.7055



96.8892, -4.1277, 10.5312



68.8721, 17.6330, -0.5853



44.7027, -1.8574, 5.0687

0.0000, NaN, NaN



46.2646, -2.4686, 2.5136

Same Dimension

The Same Dimension uses a secret algorithm to generate beautiful new colors.



76.1678, -0.5469, 17.7055



87.9636, 0.6638, 23.7969



83.0681, -12.6605, 24.1725



37.7237, -1.4481, 4.7908



41.4164, 19.8986, 25.8690



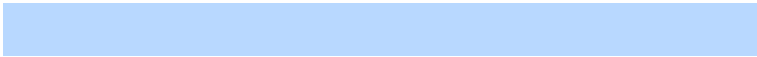
11.3249, 3.4176, 7.0382

Inverse Universe

The Inverse Universe completely reimagines the original color for something new.



71.6242, -5.3947, -12.0102



81.4660, -6.2255, -18.7644



64.9371, 6.8576, -21.6881



36.8500, -2.3892, -0.9097



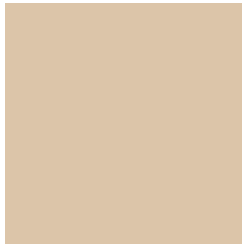
29.1679, 12.1064, -62.5917



8.4952, 0.9716, -12.7158

Previews

White Background



This preview shows how the HunterLab color 76.1661, -0.5445, 17.7044 looks on a white background.

Color Contrast Check

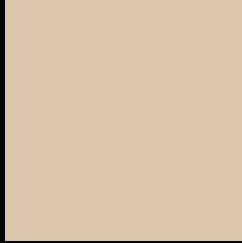
Large Text (above 18pt) WCAG AA × Fail

Any Text WCAG AA × Fail

Large Text (above 18pt) WCAG AAA × Fail

Any Text WCAG AAA × Fail

Black Background



This preview shows how the HunterLab color 76.1661, -0.5445, 17.7044 looks on a black background.

Color Contrast Check

Large Text (above 18pt) WCAG AA ✓ Pass

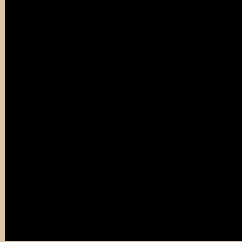
Any Text WCAG AA ✓ Pass

Large Text (above 18pt) WCAG AAA ✓ Pass

Any Text WCAG AAA ✓ Pass

If you want to check with other color combinations, try the [Color Contrast Checker](#).

HunterLab 76.1661, -0.5445, 17.7044 Background



This preview shows how black text looks on a background with the HunterLab color 76.1661, -0.5445, 17.7044.



This preview shows how white text looks on a background with the HunterLab color 76.1661, -0.5445, 17.7044.

Color Blindness Simulation

Color vision deficiency is a very complex topic, and I could not describe the different causes any better than Wikipedia does, so if you want to learn more, you should check out their [article about color blindness](#).

Dichromacy



Original Color

76.1661, -0.5445, 17.7044

Protanopia

76.1969, -5.0304, 17.2722

Deuteranopia

76.1782, 5.5941, 17.4394



Tritanopia

76.2967, 9.5759, 1.3080

Trichromacy



Original Color

76.1661, -0.5445, 17.7044

Protanomaly

76.1874, -3.5060, 17.2894

Deuteranomaly

76.0373, 3.6221, 17.2632

Tritanomaly

76.2377, 5.5413, 7.8377

Monochromacy



Original Color

76.1661, -0.5445, 17.7044

Achromatopsia

76.4250, -4.0778, 4.1523

Achromatomaly

76.4150, -3.2600, 9.6748

CSS Examples

Text

The CSS property to change the color of the text to HunterLab 76.1661, -0.5445, 17.7044 is called "color". The color property can be set on classes, ids or directly on the HTML element.

This example shows how text in the color `rgb(220, 197, 169)` looks like.

```
.text, #text, p{  
    color:rgb(220, 197, 169)  
}
```

If you want to add a text shadow in that color use the text-shadow property, you can generate a text shadow directly with our [CSS Text Shadow Generator](#).

Here you see how black text with a 4 pixel rgb(220, 197, 169) colored shadow looks like.

```
.shadow{ text-shadow: 4px 4px 2px rgb(220, 197, 169) }
```

Border

The CSS property to change the border of an element to HunterLab 76.1661, -0.5445, 17.7044 is called "border". The border property can be set on classes, ids or directly on the HTML element.

This example shows the color as border, it can be applied via the CSS property "border" or "border-color".

```
.border, #border, table{ border:4px solid rgb(220, 197, 169) }
```


If only the border color should be changed use the property `border-color`.

```
.border{ border-color:rgb(220, 197, 169) }
```

If you want to add a box shadow in that color use:

Here you see how a box with a 4 pixel `rgb(220, 197, 169)` colored shadow looks like.

```
.boxshadow{ -moz-box-shadow:4px 4px 4px  
4px rgb(220, 197, 169); -webkit-box-  
shadow:4px 4px 4px 4px rgb(220, 197, 169);  
box-shadow:4px 4px 4px 4px rgb(220, 197,  
169) }
```

Background

The CSS property to change the background color of an element to HunterLab 76.1661, -0.5445, 17.7044 is called "background". The background property can be set on classes, ids or directly on the HTML element.

```
.background, #background, body{  
background: rgb(220, 197, 169) }
```

If only the background color should be changed can be used:

```
.background{ background-color: rgb(220,  
197, 169) }
```

This example shows the color as background, it is applied via the CSS property "background".

To optimize and compress your CSS code, you can use our [online CSS compressor and optimizer](#) based on csstidy. If you want to create a linear or radial gradient as background or border, check our [CSS Gradient Generator](#).

Hey! You found this booklet interesting? Support Converting Colors with the new Membership Option!

The pro membership hides all ads, plus gives you double the colors in the color bucket, and more awesome pro features!

[Learn more, Memberships starting at \\$2.50/m!](#)

**Follow me
on Twitter!**

@ConvertingColor