

Converting Colors

HunterLab(76.3082, 1.5168,
17.4986)

Have a look what the booklet for
HunterLab(76.3082, 1.5168,
17.4986) contains.

HunterLab(76.3082, 1.5168, 17.4986)	3
<i>Conversions</i>	4
<i>Details</i>	6
<i>Harmonies</i>	12
<i>Previews</i>	24
<i>Color Blindness Simulation</i>	28
<i>CSS Examples</i>	31

Color

**HunterLab(76.3082, 1.5168,
17.4986)**

Conversions

Conversions Part 1

Format	Color
Hex	E0C4AA
RGB	224, 196, 170
RGB Percent	88%, 77%, 67%
CMY	0.1216, 0.2314, 0.3333
CMYK	0.00, 0.12, 0.24, 0.12
HSL	29°, 47%, 77%
HSV	29°, 24%, 88%
XYZ	57.7361, 58.2294, 46.2266
YIQ	201.4080, 25.0340, -2.1500

Conversions

Conversions Part 2

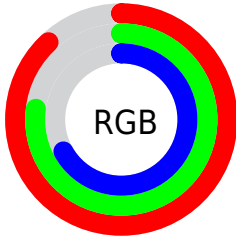
Format	Color
R _Y B	224, 220, 170
Decimal	14730410
CIE Lab	80.87, 5.92, 16.70
CIE LCh	81, 17.715, 70.461
Yxy	58.2321, 0.3560, 0.3590
Android (android.graphics.Color)	4292920490 (0xFFE0C4AA)
YUV	201.4080, -15.4841, 19.8132
Hunter-Lab	76.3082, 1.5168, 17.4986

Details

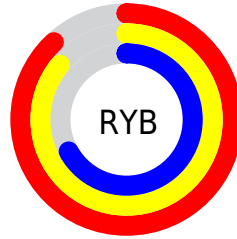
The HunterLab color $76.3082, 1.5168, 17.4986$ is a light color, and the websafe version is hex FFCCCC . A complement of this color would be $73.6984, -7.3238, -11.4496$, and the grayscale version is $76.6569, -4.0902, 4.1649$.

A 20% lighter version of the original color is $98.4616, -9.2276, 17.6154$, and $53.8320, 2.2576, 14.3332$ is the 20% darker color. If you saturate the color by 10%, you get $72.3997, 4.6527, 21.8852$, and if you desaturate by 10%, it is $80.3722, -1.2609, 12.5424$.

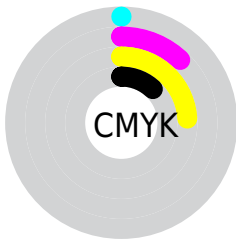
Distribution



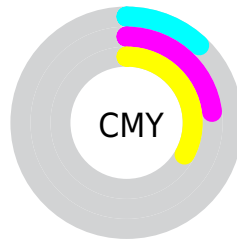
- Red (88%)
- Green (77%)
- Blue (67%)



- Red (88%)
- Yellow (86%)
- Blue (67%)



- Cyan (0%)
- Magenta (12%)
- Yellow (24%)
- Black (12%)



- Cyan (12%)
- Magenta (23%)
- Yellow (33%)

Brightness & Saturation Gradients

These gradients show how the HunterLab color 76.3082, 1.5168, 17.4986 changes by changing the brightness by 10 percent. The first figure shows a shift by +10% for each color and the second figure -10%.

Similar to the brightness gradients but the following saturation gradients show a change of the HunterLab color 76.3082, 1.5168, 17.4986 by changing the saturation by 10% instead.

■ 76.3082, 1.5168,
17.4986

■ 76.3082, 1.5168,
17.4986

204.4627, -3.2091,
30.6038

■ 64.8037, 1.8411,
16.0161

■ 101.1240, 0.7241,
20.4242

■ 53.9422, 2.1169,
14.5083

114.3772, 0.2671,
21.8754

■ 43.7660, 2.3364,
12.9651

128.1634, -0.2280,
23.3240

■ 34.3250, 2.4925,
11.3699

142.4630, -0.7589,
24.7727

■ 25.6816, 2.5756,
9.6972

157.2581, -1.3240,
26.2235

■ 17.9176, 2.5715,
7.9052

172.5326, -1.9216,

■ 11.1470, 2.4583,

27.6781

7.0435

188.2719, -2.5504,
29.1379

■ 3.0992, 8.1648,
2.1695

0.0000, NaN, NaN

■ 76.3082, 1.5168,
17.4986

■ 76.3082, 1.5168,
17.4986

■ 72.3997, 4.6527,
21.8852

■ 80.3722, -1.2609,
12.5424

■ 68.6556, 8.1764,
25.6347

■ 84.5738, -3.6978,
7.0728

■ 65.0928, 12.1014,
28.6812

■ 88.9035, -5.8227,
1.1442

■ 61.7277, 16.4331,
30.9594

■ 93.1902, -8.5474,
-2.9181

■ 58.5772, 21.1611,
32.4136

■ 96.9513, -14.5409,
1.6296

■ 55.6579, 26.2508,
33.0115

■ 97.2560, -15.0171,
1.9903

■ 52.9844, 31.6334,
32.7688

■ 51.5221, 34.8697,
32.3581

Harmonies

Analogous

The Analogous color harmony consists of three colors that are next to each other on the color wheel.



76.3099, 8.8716, 13.6424



76.3082, 1.5168, 17.4986



76.3099, -7.0448, 18.0174

Triad

The Triadic color harmony groups three colors that are evenly spaced from another and form a triangle on the color wheel.



76.3099, 1.5143, 17.4997



76.3099, -19.6144, 1.2523



76.3099, 6.9152, -8.7620

Complementary

The Complementary color scheme is a pair of colors which are on the opposite of each other on the color wheel.



76.3082, 1.5168, 17.4986



73.6984, -7.3238, -11.4496

Split Complementary

Split-complementary colors differ from the complementary color scheme. The scheme consists of three colors, the original color and two neighbors of the complement color.



76.3099, -1.0607, -12.9259



76.3082, 1.5168, 17.4986



76.3099, -16.2136, -6.7353

Square

The Square scheme is like the rectangle color scheme, but the four colors are evenly spaced on the color wheel.



76.3099, 1.5143, 17.4997



76.3099, -18.9934, 9.2129



76.3099, -9.5095, -12.1458



76.3099, 12.0838, -1.2774

Rectangle

The Rectangle color scheme consists of four colors that form a rectangle on the color wheel.



76.3082, 1.5168, 17.4986



76.3099, -12.2515, 16.4685



76.3099, -9.5095, -12.1458



76.3099, 4.4593, -10.6319

Sweetspot

The Sweet Spot groups the original color and five complimentary colors.



76.3099, 1.5143, 17.4997



96.5092, -3.4910, 10.1150



69.7937, 19.5518, -2.4493



44.5119, -1.5376, 4.8606

0.0000, NaN, NaN



46.2646, -2.4686, 2.5136

Same Dimension

The Same Dimension uses a secret algorithm to generate beautiful new colors.



76.3099, 1.5143, 17.4997



86.0522, 3.5545, 22.9483



84.3201, -11.7145, 25.0110



38.4504, -1.1385, 4.6961



39.5968, 25.9159, 24.8531



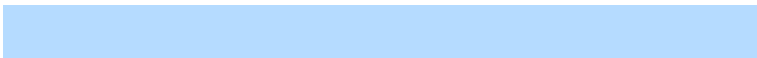
11.2491, 4.9613, 7.0185

Inverse Universe

The Inverse Universe completely reimagines the original color for something new.



73.6984, -7.3238, -11.4496



82.4109, -8.7359, -17.4366



65.8465, 6.0718, -22.8188



37.9644, -2.7901, -0.6867



32.6377, 6.2785, -54.3478



9.5784, -0.1206, -11.7119

Previews

White Background



This preview shows how the HunterLab color 76.3082, 1.5168, 17.4986 looks on a white background.

Color Contrast Check

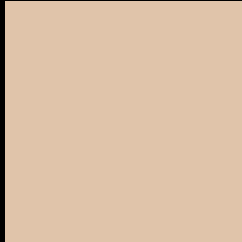
Large Text (above 18pt) WCAG AA × Fail

Any Text WCAG AA × Fail

Large Text (above 18pt) WCAG AAA × Fail

Any Text WCAG AAA × Fail

Black Background



This preview shows how the HunterLab color 76.3082, 1.5168, 17.4986 looks on a black background.

Color Contrast Check

Large Text (above 18pt) WCAG AA ✓ Pass

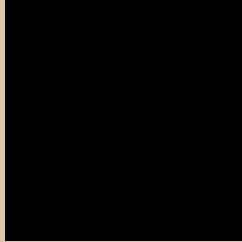
Any Text WCAG AA ✓ Pass

Large Text (above 18pt) WCAG AAA ✓ Pass

Any Text WCAG AAA ✓ Pass

If you want to check with other color combinations, try the [Color Contrast Checker](#).

HunterLab 76.3082, 1.5168, 17.4986 Background



This preview shows how black text looks on a background with the HunterLab color 76.3082, 1.5168, 17.4986.



This preview shows how white text looks on a background with the HunterLab color 76.3082, 1.5168,

Color Blindness Simulation

Color vision deficiency is a very complex topic, and I could not describe the different causes any better than Wikipedia does, so if you want to learn more, you should check out their [article about color blindness](#).

Dichromacy



Original Color

76.3082, 1.5168, 17.4986

Protanopia

76.2470, -4.7557, 16.5501

Deuteranopia

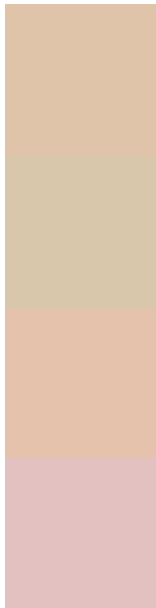
76.2031, 5.7275, 17.0794



Tritanopia

76.2967, 10.9863, 1.8293

Trichromacy



Original Color

76.3082, 1.5168, 17.4986

Protanomaly

76.4108, -2.6823, 17.1416

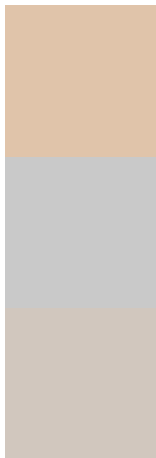
Deuteranomaly

76.1694, 4.1178, 17.0172

Tritanomaly

76.3682, 7.4717, 8.0191

Monochromacy



Original Color

76.3082, 1.5168, 17.4986

Achromatopsia

76.4250, -4.0778, 4.1523

Achromatomaly

76.2364, -2.2667, 9.0504

CSS Examples

Text

The CSS property to change the color of the text to HunterLab 76.3082, 1.5168, 17.4986 is called "color". The color property can be set on classes, ids or directly on the HTML element.

This example shows how text in the color `rgb(224, 196, 170)` looks like.

```
.text, #text, p{  
  color:rgb(224, 196, 170)  
}
```

If you want to add a text shadow in that color use the text-shadow property, you can generate a text shadow directly with our [CSS Text Shadow Generator](#).

Here you see how black text with a 4 pixel rgb(224, 196, 170) colored shadow looks like.

```
.shadow{ text-shadow: 4px 4px 2px rgb(224, 196, 170) }
```

Border

The CSS property to change the border of an element to HunterLab 76.3082, 1.5168, 17.4986 is called "border". The border property can be set on classes, ids or directly on the HTML element.

This example shows the color as border, it can be applied via the CSS property "border" or "border-color".

```
.border, #border, table{ border:4px solid rgb(224, 196, 170) }
```


If only the border color should be changed use the property `border-color`.

```
.border{ border-color:rgb(224, 196, 170) }
```

If you want to add a box shadow in that color use:

Here you see how a box with a 4 pixel `rgb(224, 196, 170)` colored shadow looks like.

```
.boxshadow{ -moz-box-shadow:4px 4px 4px  
4px rgb(224, 196, 170); -webkit-box-  
shadow:4px 4px 4px 4px rgb(224, 196, 170);  
box-shadow:4px 4px 4px 4px rgb(224, 196,  
170) }
```

Background

The CSS property to change the background color of an element to HunterLab 76.3082, 1.5168, 17.4986 is called "background". The background property can be set on classes, ids or directly on the HTML element.

```
.background, #background, body{  
background: rgb(224, 196, 170) }
```

If only the background color should be changed can be used:

```
.background{ background-color: rgb(224,  
196, 170) }
```

This example shows the color as background, it is applied via the CSS property "background".

To optimize and compress your CSS code, you can use our [online CSS compressor and optimizer](#) based on csstidy. If you want to create a linear or radial gradient as background or border, check our [CSS Gradient Generator](#).

Hey! You found this booklet interesting? Support Converting Colors with the new Membership Option!

The pro membership hides all ads, plus gives you double the colors in the color bucket, and more awesome pro features!

[Learn more, Memberships starting at \\$2.50/m!](#)

**Follow me
on Twitter!**

@ConvertingColor