

Converting Colors

HunterLab(76.3103, 5.7834,
10.8084)

Have a look what the booklet for
HunterLab(76.3103, 5.7834,
10.8084) contains.

HunterLab(76.3807, 5.6770, 10.6708)	3
<i>Conversions</i>	4
<i>Details</i>	6
<i>Harmonies</i>	12
<i>Previews</i>	24
<i>Color Blindness Simulation</i>	28
<i>CSS Examples</i>	31

Color

**HunterLab(76.3807, 5.6770,
10.6708)**

Conversions

Conversions Part 1

Format	Color
Hex	E2C2BB
RGB	226, 194, 187
RGB Percent	89%, 76%, 73%
CMY	0.1137, 0.2392, 0.2667
CMYK	0.00, 0.14, 0.17, 0.11
HSL	11°, 40%, 81%
HSV	11°, 17%, 89%
XYZ	59.6254, 58.3401, 55.1318
YIQ	202.7700, 21.3190, 4.6070

Conversions

Conversions Part 2

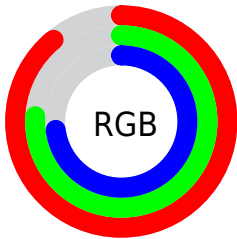
Format	Color
R _Y B	226, 196, 187
Decimal	14860987
CIE Lab	80.93, 10.23, 7.71
CIE LCh	81, 12.810, 37.002
Yxy	58.3427, 0.3445, 0.3370
Android (android.graphics.Color)	4293051067 (0xFFE2C2BB)
YUV	202.7700, -7.7746, 20.3727
Hunter-Lab	76.3807, 5.6770, 10.6708

Details

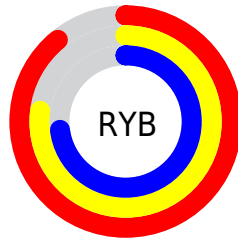
The HunterLab color **76.3807, 5.6770, 10.6708** is a light color, and the websafe version is hex **FFCCCC**. A complement of this color would be **81.6806, -12.7996, -2.1211**, and the grayscale version is **77.2077, -4.1196, 4.1948**.

A 20% lighter version of the original color is **98.3491, -5.2888, 9.3914**, and **53.8734, 5.9784, 8.4793** is the 20% darker color. If you saturate the color by 10%, you get **70.5015, 12.1321, 13.9584**, and if you desaturate by 10%, it is **82.5608, -0.4292, 7.2660**.

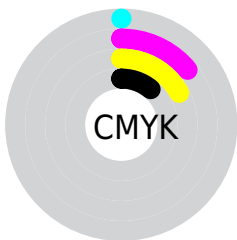
Distribution



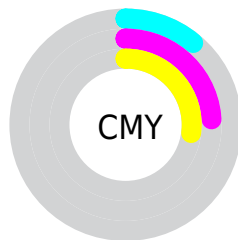
- Red (89%)
- Green (76%)
- Blue (73%)



- Red (89%)
- Yellow (77%)
- Blue (73%)



- Cyan (0%)
- Magenta (14%)
- Yellow (17%)
- Black (11%)



- Cyan (11%)
- Magenta (24%)
- Yellow (27%)

Brightness & Saturation Gradients


These gradients show how the HunterLab color 76.3807, 5.6770, 10.6708 changes by changing the brightness by 10 percent. The first figure shows a shift by +10% for each color and the second figure -10%.

Similar to the brightness gradients but the following saturation gradients show a change of the HunterLab color 76.3807, 5.6770, 10.6708 by changing the saturation by 10% instead.

 76.3807, 5.6770,
10.6708

 76.3807, 5.6770,
10.6708


204.5634, 2.4621,
20.3870

 64.8724, 5.7983,
9.6671


 101.2037, 5.2636,
12.7212

 54.0067, 5.8603,
8.6728


114.4601, 4.9848,
13.7678

 43.8262, 5.8531,
7.6859


128.2496, 4.6615,
14.8301

 34.3806, 5.7674,
6.7013

142.5523, 4.2965,
15.9084

 25.7321, 5.5899,
5.7110

157.3503, 3.8922,
17.0032

 17.9624, 5.3020,
4.7005

172.6277, 3.4505,

 11.1852, 4.8753,

18.1145

3.7036

188.3699, 2.9733,
19.2424

■ 3.2069, 13.7291,
2.2448

0.0000, NaN, NaN

■ 76.3807, 5.6770,
10.6708

■ 76.3807, 5.6770,
10.6708

■ 70.5015, 12.1321,
13.9584

■ 82.5608, -0.4292,
7.2660

■ 64.9644, 18.9574,
17.0781

■ 88.9986, -6.2086,
3.7722

■ 59.8267, 26.1334,
19.9634

■ 95.6645, -11.6987,
0.2119

■ 55.1535, 33.5875,
22.5205

■ 97.4212, -14.4265,
2.2001

■ 51.0185, 41.1611,
24.6288

■ 47.4984, 48.5792,
26.1512

■ 44.6631, 55.4425,
26.9658

■ 42.5573, 61.2648,
27.0481

■ 42.1028, 62.5945,
27.0393

Harmonies

Analogous

The Analogous color harmony consists of three colors that are next to each other on the color wheel.



76.3824, 8.1149, 5.5271



76.3807, 5.6770, 10.6708



76.3824, 0.6333, 13.8763

Triad

The Triadic color harmony groups three colors that are evenly spaced from another and form a triangle on the color wheel.



76.3824, 5.6746, 10.6720



76.3824, -14.7453, 8.4564



76.3824, -2.6211, -7.9746

Complementary

The Complementary color scheme is a pair of colors which are on the opposite of each other on the color wheel.



76.3807, 5.6770, 10.6708



81.6806, -12.7996, -2.1211

Split Complementary

Split-complementary colors differ from the complementary color scheme. The scheme consists of three colors, the original color and two neighbors of the complement color.



76.3824, -8.6811, -7.0338



76.3807, 5.6770, 10.6708



76.3824, -15.5541, 2.7624

Square

The Square scheme is like the rectangle color scheme, but the four colors are evenly spaced on the color wheel.



76.3824, 5.6746, 10.6720



76.3824, -11.1220, 12.6701



76.3824, -13.3677, -2.9862



76.3824, 3.2274, -5.4633

Rectangle

The Rectangle color scheme consists of four colors that form a rectangle on the color wheel.



76.3807, 5.6770, 10.6708



76.3824, -3.4553, 14.6365



76.3824, -13.3677, -2.9862



76.3824, -4.7020, -8.0546

Sweetspot

The Sweet Spot groups the original color and five complimentary colors.



76.3824, 5.6746, 10.6720



96.2874, -1.9960, 7.4489



75.3996, 14.7981, -6.2513



44.3082, -0.7029, 3.5764

0.0000, NaN, NaN



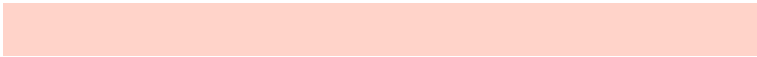
46.2646, -2.4686, 2.5136

Same Dimension

The Same Dimension uses a secret algorithm to generate beautiful new colors.



76.3824, 5.6746, 10.6720



84.9236, 9.3335, 13.7199



82.0644, -4.1256, 16.5284



37.5454, 0.4047, 3.7081



31.9936, 46.6638, 20.5312



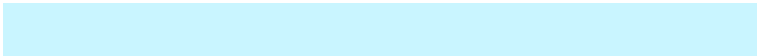
9.1009, 10.2514, 5.7874

Inverse Universe

The Inverse Universe completely reimagines the original color for something new.



81.6806, -12.7996, -2.1211



92.3237, -16.5083, -4.1564



75.7397, -3.2154, -9.7107



38.8994, -4.3074, 0.4406



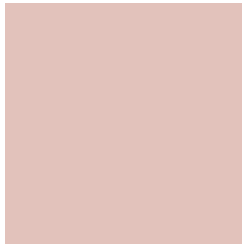
48.1512, -18.0640, -21.1898



13.1066, -5.3245, -4.8880

Previews

White Background



This preview shows how the HunterLab color 76.3807, 5.6770, 10.6708 looks on a white background.

Color Contrast Check

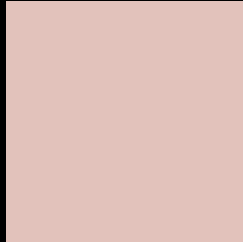
Large Text (above 18pt) WCAG AA × Fail

Any Text WCAG AA × Fail

Large Text (above 18pt) WCAG AAA × Fail

Any Text WCAG AAA × Fail

Black Background



This preview shows how the HunterLab color 76.3807, 5.6770, 10.6708 looks on a black background.

Color Contrast Check

Large Text (above 18pt) WCAG AA ✓ Pass

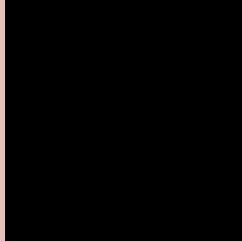
Any Text WCAG AA ✓ Pass

Large Text (above 18pt) WCAG AAA ✓ Pass

Any Text WCAG AAA ✓ Pass

If you want to check with other color combinations, try the [Color Contrast Checker](#).

HunterLab 76.3807, 5.6770, 10.6708 Background



This preview shows how black text looks on a background with the HunterLab color 76.3807, 5.6770, 10.6708.



This preview shows how white text looks on a background with the HunterLab color 76.3807, 5.6770,

Color Blindness Simulation

Color vision deficiency is a very complex topic, and I could not describe the different causes any better than Wikipedia does, so if you want to learn more, you should check out their [article about color blindness](#).

Dichromacy



Original Color

76.3807, 5.6770, 10.6708

Protanopia

76.3490, -3.4321, 9.1552

Deuteranopia

76.3807, 5.6770, 10.6708



Tritanopia

76.2967, 10.9863, 1.8293

Trichromacy



Original Color

76.3807, 5.6770, 10.6708

Protanomaly

76.3927, -0.2411, 9.7029

Deuteranomaly

76.3807, 5.6770, 10.6708

Tritanomaly

76.2586, 8.9499, 5.1371

Monochromacy



Original Color

76.3807, 5.6770, 10.6708

Achromatopsia

77.2788, -4.1234, 4.1987

Achromatomaly

76.9342, -1.0019, 6.6802

CSS Examples

Text

The CSS property to change the color of the text to HunterLab 76.3807, 5.6770, 10.6708 is called "color". The color property can be set on classes, ids or directly on the HTML element.

This example shows how text in the color `rgb(226, 194, 187)` looks like.

```
.text, #text, p{  
    color:rgb(226, 194, 187)  
}
```

If you want to add a text shadow in that color use the text-shadow property, you can generate a text shadow directly with our [CSS Text Shadow Generator](#).

Here you see how black text with a 4 pixel rgb(226, 194, 187) colored shadow looks like.

```
.shadow{ text-shadow: 4px 4px 2px rgb(226, 194, 187) }
```

Border

The CSS property to change the border of an element to HunterLab 76.3807, 5.6770, 10.6708 is called "border". The border property can be set on classes, ids or directly on the HTML element.

This example shows the color as border, it can be applied via the CSS property "border" or "border-color".

```
.border, #border, table{ border:4px solid rgb(226, 194, 187) }
```


If only the border color should be changed use the property `border-color`.

```
.border{ border-color:rgb(226, 194, 187) }
```

If you want to add a box shadow in that color use:

Here you see how a box with a 4 pixel `rgb(226, 194, 187)` colored shadow looks like.

```
.boxshadow{ -moz-box-shadow:4px 4px 4px  
4px rgb(226, 194, 187); -webkit-box-  
shadow:4px 4px 4px 4px rgb(226, 194, 187);  
box-shadow:4px 4px 4px 4px rgb(226, 194,  
187) }
```

Background

The CSS property to change the background color of an element to HunterLab 76.3807, 5.6770, 10.6708 is called "background". The background property can be set on classes, ids or directly on the HTML element.

```
.background, #background, body{  
background: rgb(226, 194, 187) }
```

If only the background color should be changed can be used:

```
.background{ background-color: rgb(226,  
194, 187) }
```

This example shows the color as background, it is applied via the CSS property "background".

To optimize and compress your CSS code, you can use our [online CSS compressor and optimizer](#) based on csstidy. If you want to create a linear or radial gradient as background or border, check our [CSS Gradient Generator](#).

Hey! You found this booklet interesting? Support Converting Colors with the new Membership Option!

The pro membership hides all ads, plus gives you double the colors in the color bucket, and more awesome pro features!

[Learn more, Memberships starting at \\$2.50/m!](#)

**Follow me
on Twitter!**

@ConvertingColor