

Converting Colors

HunterLab(76.3262, 0.7306,
12.2443)

Have a look what the booklet for
HunterLab(76.3262, 0.7306,
12.2443) contains.

HunterLab(76.3262, 0.7306, 12.2443)	3
<i>Conversions</i>	4
<i>Details</i>	6
<i>Harmonies</i>	12
<i>Previews</i>	24
<i>Color Blindness Simulation</i>	28
<i>CSS Examples</i>	31

Color

**HunterLab(76.3262, 0.7306,
12.2443)**

Conversions

Conversions Part 1

Format	Color
Hex	DAC5B7
RGB	218, 197, 183
RGB Percent	85%, 77%, 72%
CMY	0.1451, 0.2274, 0.2823
CMYK	0.00, 0.10, 0.16, 0.15
HSL	24°, 32%, 79%
HSV	24°, 16%, 85%
XYZ	57.4270, 58.2569, 53.0177
YIQ	201.6830, 17.0100, 0.0980

Conversions

Conversions Part 2

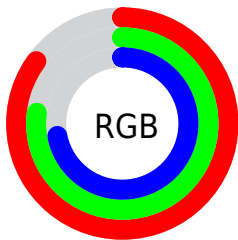
Format	Color
R _Y B	218, 206, 183
Decimal	14337463
CIE Lab	80.88, 5.10, 9.69
CIE LCh	81, 10.955, 62.240
Yxy	58.2595, 0.3404, 0.3453
Android (android.graphics.Color)	4292527543 (0xFFDAC5B7)
YUV	201.6830, -9.2107, 14.3100
Hunter-Lab	76.3262, 0.7306, 12.2443

Details

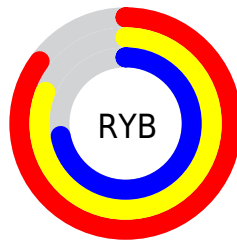
The HunterLab color $76.3262, 0.7306, 12.2443$ is a light color, and the websafe version is hex `CCCCCC`. A complement of this color would be $76.3634, -7.9344, -4.5842$, and the grayscale version is $76.7508, -4.0952, 4.1700$.

A 20% lighter version of the original color is $99.1845, -7.5314, 12.1701$, and $53.8917, 1.5975, 10.0012$ is the 20% darker color. If you saturate the color by 10%, you get $71.9284, 4.3864, 16.5283$, and if you desaturate by 10%, it is $80.8937, -2.6005, 7.5601$.

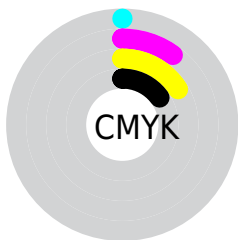
Distribution



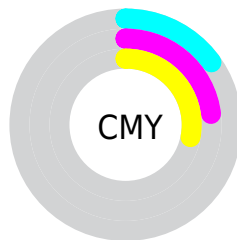
- Red (85%)
- Green (77%)
- Blue (72%)



- Red (85%)
- Yellow (81%)
- Blue (72%)



- Cyan (0%)
- Magenta (10%)
- Yellow (16%)
- Black (15%)



- Cyan (15%)
- Magenta (23%)
- Yellow (28%)

Brightness & Saturation Gradients

These gradients show how the HunterLab color 76.3262, 0.7306, 12.2443 changes by changing the brightness by 10 percent. The first figure shows a shift by +10% for each color and the second figure -10%.

Similar to the brightness gradients but the following saturation gradients show a change of the HunterLab color 76.3262, 0.7306, 12.2443 by changing the saturation by 10% instead.

■ 76.3262, 0.7306,
12.2443

■ 76.3262, 0.7306,
12.2443

204.4877, -4.2873,
22.6910

■ 64.8208, 1.0946,
11.1381

■ 101.1438, -0.1354,
14.4825

■ 53.9582, 1.4121,
10.0342

114.3977, -0.6270,
15.6161

■ 43.7809, 1.6758,
8.9287

128.1848, -1.1553,
16.7616

■ 34.3388, 1.8794,
7.8144

142.4852, -1.7183,
17.9199

■ 25.6941, 2.0138,
6.6794

157.2810, -2.3144,
19.0915

■ 17.9287, 2.0662,
5.5033

172.5562, -2.9421,

■ 11.1564, 2.0163,

20.2771

4.4398

188.2962, -3.6001,
21.4768

■ 3.1263, 6.9450,
2.1884

0.0000, NaN, NaN

■ 76.3262, 0.7306,
12.2443

■ 76.3262, 0.7306,
12.2443

■ 71.9284, 4.3864,
16.5283

■ 80.8937, -2.6005,
7.5601

■ 67.7132, 8.3993,
20.3491

■ 85.6100, -5.6279,
2.5229

■ 63.7028, 12.7872,
23.6404

■ 90.4631, -8.3816,
-2.8227

■ 59.9202, 17.5595,
26.3275

■ 94.9062, -13.8595,
-0.8654

■ 56.3907, 22.7078,
28.3334

■ 96.7706, -16.7591,
1.3714

■ 53.1412, 28.1958,
29.5877

■ 50.1988, 33.9480,
30.0439

■ 47.5875, 39.8346,
29.7129

■ 46.6462, 42.1249,
29.4806

Harmonies

Analogous

The Analogous color harmony consists of three colors that are next to each other on the color wheel.



76.3279, 4.7360, 9.1477



76.3262, 0.7306, 12.2443



76.3279, -4.4747, 13.2211

Triad

The Triadic color harmony groups three colors that are evenly spaced from another and form a triangle on the color wheel.



76.3279, 0.7283, 12.2455



76.3279, -13.9957, 3.7748



76.3279, 1.4364, -4.5086

Complementary

The Complementary color scheme is a pair of colors which are on the opposite of each other on the color wheel.



76.3262, 0.7306, 12.2443



76.3634, -7.9344, -4.5842

Split Complementary

Split-complementary colors differ from the complementary color scheme. The scheme consists of three colors, the original color and two neighbors of the complement color.



76.3279, -3.6780, -6.1814



76.3262, 0.7306, 12.2443



76.3279, -12.5070, -1.2002

Square

The Square scheme is like the rectangle color scheme, but the four colors are evenly spaced on the color wheel.



76.3279, 0.7283, 12.2455



76.3279, -12.8874, 8.5337



76.3279, -8.7658, -4.9317



76.3279, 5.1526, -0.5001

Rectangle

The Rectangle color scheme consists of four colors that form a rectangle on the color wheel.



76.3262, 0.7306, 12.2443



76.3279, -7.8959, 12.5946



76.3279, -8.7658, -4.9317



76.3279, -0.1810, -5.3746

Sweetspot

The Sweet Spot groups the original color and five complimentary colors.



76.3279, 0.7283, 12.2455



97.1713, -3.4869, 8.4391



72.8923, 11.4009, -1.3515



44.7736, -1.4897, 4.0960

0.0000, NaN, NaN



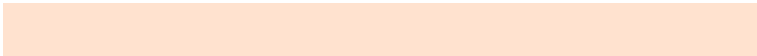
46.2646, -2.4686, 2.5136

Same Dimension

The Same Dimension uses a secret algorithm to generate beautiful new colors.



76.3279, 0.7283, 12.2455



89.4991, 2.1863, 16.2717



81.6527, -8.1534, 17.6405



37.2858, -0.7097, 4.3175



36.3774, 31.8954, 22.9740



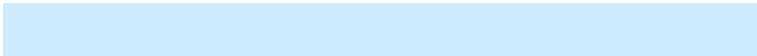
10.1147, 6.0262, 6.3382

Inverse Universe

The Inverse Universe completely reimagines the original color for something new.



76.3634, -7.9344, -4.5842



89.5487, -10.1186, -7.6373



71.0345, 0.9523, -11.5758



37.2959, -3.1208, -0.3658



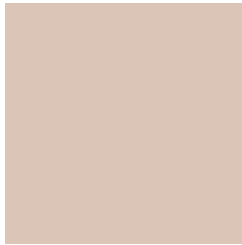
35.9682, -0.7425, -43.3542



10.0253, -1.6005, -9.0758

Previews

White Background



This preview shows how the HunterLab color 76.3262, 0.7306, 12.2443 looks on a white background.

Color Contrast Check

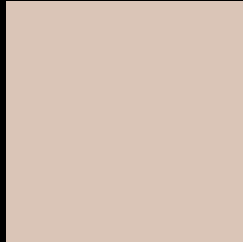
Large Text (above 18pt) WCAG AA × Fail

Any Text WCAG AA × Fail

Large Text (above 18pt) WCAG AAA × Fail

Any Text WCAG AAA × Fail

Black Background



This preview shows how the HunterLab color 76.3262, 0.7306, 12.2443 looks on a black background.

Color Contrast Check

Large Text (above 18pt) WCAG AA ✓ Pass

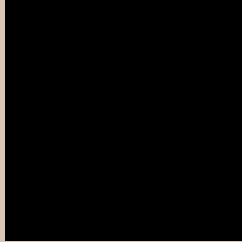
Any Text WCAG AA ✓ Pass

Large Text (above 18pt) WCAG AAA ✓ Pass

Any Text WCAG AAA ✓ Pass

If you want to check with other color combinations, try the [Color Contrast Checker](#).

HunterLab 76.3262, 0.7306, 12.2443 Background



This preview shows how black text looks on a background with the HunterLab color 76.3262, 0.7306, 12.2443.



This preview shows how white text looks on a background with the HunterLab color 76.3262, 0.7306,

Color Blindness Simulation

Color vision deficiency is a very complex topic, and I could not describe the different causes any better than Wikipedia does, so if you want to learn more, you should check out their [article about color blindness](#).

Dichromacy



Original Color

76.3262, 0.7306, 12.2443

Protanopia

76.3028, -3.8739, 11.2845

Deuteranopia

76.4036, 5.5873, 11.9873



Tritanopia

76.2011, 7.8387, 0.6609

Trichromacy



Original Color

76.3262, 0.7306, 12.2443

Protanomaly

76.3574, -2.1853, 11.8015

Deuteranomaly

76.3794, 4.0033, 11.9336

Tritanomaly

76.1070, 5.4619, 4.8989

Monochromacy



Original Color

76.3262, 0.7306, 12.2443

Achromatopsia

76.8517, -4.1006, 4.1755

Achromatomaly

76.5889, -2.3105, 7.1850

CSS Examples

Text

The CSS property to change the color of the text to HunterLab 76.3262, 0.7306, 12.2443 is called "color". The color property can be set on classes, ids or directly on the HTML element.

This example shows how text in the color `rgb(218, 197, 183)` looks like.

```
.text, #text, p{  
    color:rgb(218, 197, 183)  
}
```

If you want to add a text shadow in that color use the text-shadow property, you can generate a text shadow directly with our [CSS Text Shadow Generator](#).

Here you see how black text with a 4 pixel rgb(218, 197, 183) colored shadow looks like.

```
.shadow{ text-shadow: 4px 4px 2px rgb(218, 197, 183) }
```

Border

The CSS property to change the border of an element to HunterLab 76.3262, 0.7306, 12.2443 is called "border". The border property can be set on classes, ids or directly on the HTML element.

This example shows the color as border, it can be applied via the CSS property "border" or "border-color".

```
.border, #border, table{ border:4px solid rgb(218, 197, 183) }
```


If only the border color should be changed use the property `border-color`.

```
.border{ border-color:rgb(218, 197, 183) }
```

If you want to add a box shadow in that color use:

Here you see how a box with a 4 pixel `rgb(218, 197, 183)` colored shadow looks like.

```
.boxshadow{ -moz-box-shadow:4px 4px 4px  
4px rgb(218, 197, 183); -webkit-box-  
shadow:4px 4px 4px 4px rgb(218, 197, 183);  
box-shadow:4px 4px 4px 4px rgb(218, 197,  
183) }
```

Background

The CSS property to change the background color of an element to HunterLab 76.3262, 0.7306, 12.2443 is called "background". The background property can be set on classes, ids or directly on the HTML element.

```
.background, #background, body{  
background: rgb(218, 197, 183) }
```

If only the background color should be changed can be used:

```
.background{ background-color: rgb(218,  
197, 183) }
```

This example shows the color as background, it is applied via the CSS property "background".

To optimize and compress your CSS code, you can use our [online CSS compressor and optimizer](#) based on csstidy. If you want to create a linear or radial gradient as background or border, check our [CSS Gradient Generator](#).

Hey! You found this booklet interesting? Support Converting Colors with the new Membership Option!

The pro membership hides all ads, plus gives you double the colors in the color bucket, and more awesome pro features!

[Learn more, Memberships starting at \\$2.50/m!](#)

**Follow me
on Twitter!**

@ConvertingColor