

Converting Colors

HunterLab(76.3417, 2.0763,
11.4775)

Have a look what the booklet for
HunterLab(76.3417, 2.0763,
11.4775) contains.

HunterLab(76.2878, 2.2344, 11.3752)	3
<i>Conversions</i>	4
<i>Details</i>	6
<i>Harmonies</i>	12
<i>Previews</i>	24
<i>Color Blindness Simulation</i>	28
<i>CSS Examples</i>	31

Color

**HunterLab(76.2878, 2.2344,
11.3752)**

Conversions

Conversions Part 1

Format	Color
Hex	DCC4B9
RGB	220, 196, 185
RGB Percent	86%, 77%, 73%
CMY	0.1373, 0.2314, 0.2745
CMYK	0.00, 0.11, 0.16, 0.14
HSL	19°, 33%, 79%
HSV	19°, 16%, 86%
XYZ	58.0121, 58.1983, 54.0747
YIQ	201.9220, 17.8350, 1.6670

Conversions

Conversions Part 2

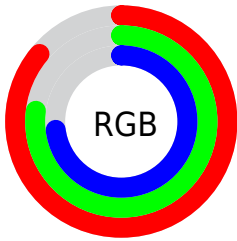
Format	Color
R _Y B	220, 201, 185
Decimal	14468281
CIE Lab	80.85, 6.67, 8.60
CIE LCh	81, 10.885, 52.188
Yxy	58.2009, 0.3407, 0.3418
Android (android.graphics.Color)	4292658361 (0xFFDCC4B9)
YUV	201.9220, -8.3425, 15.8544
Hunter-Lab	76.2878, 2.2344, 11.3752

Details

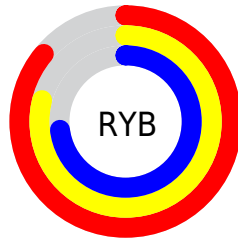
The HunterLab color $76.2878, 2.2344, 11.3752$ is a light color, and the websafe version is hex `CCCCCC`. A complement of this color would be $78.1544, -9.4955, -3.3749$, and the grayscale version is $76.8490, -4.1005, 4.1754$.

A 20% lighter version of the original color is $98.9249, -6.6765, 10.9634$, and $53.8621, 3.0240, 9.2129$ is the 20% darker color. If you saturate the color by 10%, you get $71.3276, 6.8964, 15.2694$, and if you desaturate by 10%, it is $81.4576, -2.0992, 7.1895$.

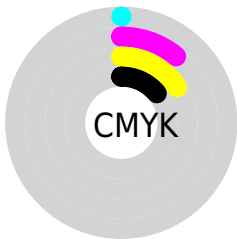
Distribution



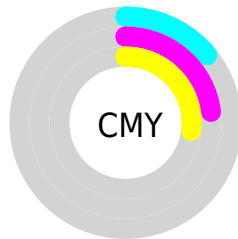
- Red (86%)
- Green (77%)
- Blue (73%)



- Red (86%)
- Yellow (79%)
- Blue (73%)



- Cyan (0%)
- Magenta (11%)
- Yellow (16%)
- Black (14%)



- Cyan (14%)
- Magenta (23%)
- Yellow (27%)

Brightness & Saturation Gradients

These gradients show how the HunterLab color 76.2878, 2.2344, 11.3752 changes by changing the brightness by 10 percent. The first figure shows a shift by +10% for each color and the second figure -10%.

Similar to the brightness gradients but the following saturation gradients show a change of the HunterLab color 76.2878, 2.2344, 11.3752 by changing the saturation by 10% instead.

■ 76.2878, 2.2344,
11.3752

■ 76.2878, 2.2344,
11.3752

204.4344, -2.2259,
21.4169

■ 64.7844, 2.5231,
10.3259

■ 101.1016, 1.5087,
13.5092

■ 53.9240, 2.7611,
9.2827

114.3538, 1.0829,
14.5946

■ 43.7490, 2.9405,
8.2430

128.1392, 0.6181,
15.6940

■ 34.3094, 3.0537,
7.2006

142.4379, 0.1163,
16.8079

■ 25.6674, 3.0904,
6.1458

157.2321, -0.4206,
17.9370

■ 17.9050, 3.0355,
5.0615

172.5058, -0.9909,

■ 11.1362, 2.8655,

19.0813

4.0329

188.2443, -1.5931,
20.2412

3.0682, 9.3135,
2.1477

0.0000, NaN, NaN

76.2878, 2.2344,
11.3752

76.2878, 2.2344,
11.3752

71.3276, 6.8964,
15.2694

81.4576, -2.0992,
7.1895

66.5979, 11.9192,
18.8114

86.8096, -6.1274,
2.7545

62.1309, 17.3157,
21.9328

92.3268, -9.8832,
-1.8918

57.9613, 23.0815,
24.5508

96.9308, -16.1834,
1.5759

■ 54.1286, 29.1800,
26.5730

■ 50.6749, 35.5255,
27.9067

■ 47.6431, 41.9663,
28.4789

■ 45.0710, 48.2710,
28.2776

■ 44.1507, 50.7123,
28.0933

Harmonies

Analogous

The Analogous color harmony consists of three colors that are next to each other on the color wheel.



76.2895, 5.5282, 7.7010



76.2878, 2.2344, 11.3752



76.2895, -2.6937, 13.0915

Triad

The Triadic color harmony groups three colors that are evenly spaced from another and form a triangle on the color wheel.



76.2895, 2.2321, 11.3764



76.2895, -13.8483, 5.4502



76.2895, -0.2135, -5.3144

Complementary

The Complementary color scheme is a pair of colors which are on the opposite of each other on the color wheel.



76.2878, 2.2344, 11.3752



78.1544, -9.4955, -3.3749

Split Complementary

Split-complementary colors differ from the complementary color scheme. The scheme consists of three colors, the original color and two neighbors of the complement color.



76.2895, -5.4460, -6.0186



76.2878, 2.2344, 11.3752



76.2895, -13.2249, 0.4252

Square

The Square scheme is like the rectangle color scheme, but the four colors are evenly spaced on the color wheel.



76.2895, 2.2321, 11.3764



76.2895, -11.9097, 9.8244



76.2895, -10.1831, -3.8548



76.2895, 4.0898, -1.9911

Rectangle

The Rectangle color scheme consists of four colors that form a rectangle on the color wheel.



76.2878, 2.2344, 11.3752



76.2895, -6.2004, 12.9796



76.2895, -10.1831, -3.8548



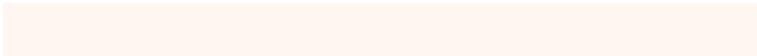
76.2895, -1.9254, -5.8740

Sweetspot

The Sweet Spot groups the original color and five complimentary colors.



76.2895, 2.2321, 11.3764



96.8271, -2.9080, 8.0546



73.8529, 11.9938, -2.9705



44.5923, -1.1842, 3.8942

0.0000, NaN, NaN



46.2646, -2.4686, 2.5136

Same Dimension

The Same Dimension uses a secret algorithm to generate beautiful new colors.



76.2895, 2.2321, 11.3764



88.2442, 4.3849, 14.9835



81.4294, -6.4456, 16.6433



37.0354, -0.2836, 4.0446



34.0833, 38.1090, 21.6691



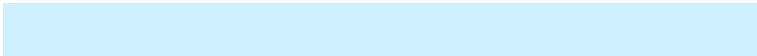
9.5096, 7.4805, 5.9907

Inverse Universe

The Inverse Universe completely reimagines the original color for something new.



78.1544, -9.4955, -3.3749



90.8866, -12.2474, -5.9280



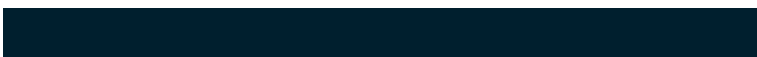
72.9257, -0.8877, -10.1291



37.5539, -3.5403, -0.0541



40.2471, -7.6117, -33.8739



10.9595, -2.9979, -7.2268

Previews

White Background



This preview shows how the HunterLab color 76.2878, 2.2344, 11.3752 looks on a white background.

Color Contrast Check

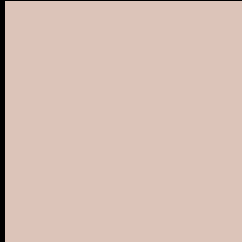
Large Text (above 18pt) WCAG AA × Fail

Any Text WCAG AA × Fail

Large Text (above 18pt) WCAG AAA × Fail

Any Text WCAG AAA × Fail

Black Background



This preview shows how the HunterLab color 76.2878, 2.2344, 11.3752 looks on a black background.

Color Contrast Check

Large Text (above 18pt) WCAG AA ✓ Pass

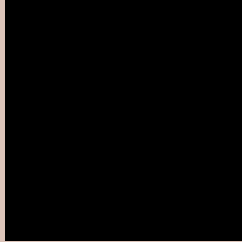
Any Text WCAG AA ✓ Pass

Large Text (above 18pt) WCAG AAA ✓ Pass

Any Text WCAG AAA ✓ Pass

If you want to check with other color combinations, try the [Color Contrast Checker](#).

HunterLab 76.2878, 2.2344, 11.3752 Background



This preview shows how black text looks on a background with the HunterLab color 76.2878, 2.2344, 11.3752.



This preview shows how white text looks on a background with the HunterLab color 76.2878, 2.2344,

Color Blindness Simulation

Color vision deficiency is a very complex topic, and I could not describe the different causes any better than Wikipedia does, so if you want to learn more, you should check out their [article about color blindness](#).

Dichromacy



Original Color

76.2878, 2.2344, 11.3752

Protanopia

76.3586, -3.5689, 10.4847

Deuteranopia

76.3250, 5.3788, 11.4706



Tritanopia

76.4081, 8.5253, 0.9262

Trichromacy



Original Color

76.2878, 2.2344, 11.3752

Protanomaly

76.4127, -1.8839, 11.0074

Deuteranomaly

76.4070, 4.1513, 11.5378

Tritanomaly

76.3435, 6.3148, 4.7157

Monochromacy



Original Color

76.2878, 2.2344, 11.3752

Achromatopsia

76.8517, -4.1006, 4.1755

Achromatomaly

76.7134, -1.8217, 6.8754

CSS Examples

Text

The CSS property to change the color of the text to HunterLab 76.2878, 2.2344, 11.3752 is called "color". The color property can be set on classes, ids or directly on the HTML element.

This example shows how text in the color `rgb(220, 196, 185)` looks like.

```
.text, #text, p{  
    color:rgb(220, 196, 185)  
}
```

If you want to add a text shadow in that color use the text-shadow property, you can generate a text shadow directly with our [CSS Text Shadow Generator](#).

Here you see how black text with a 4 pixel rgb(220, 196, 185) colored shadow looks like.

```
.shadow{ text-shadow: 4px 4px 2px rgb(220, 196, 185) }
```

Border

The CSS property to change the border of an element to HunterLab 76.2878, 2.2344, 11.3752 is called "border". The border property can be set on classes, ids or directly on the HTML element.

This example shows the color as border, it can be applied via the CSS property "border" or "border-color".

```
.border, #border, table{ border:4px solid rgb(220, 196, 185) }
```


If only the border color should be changed use the property `border-color`.

```
.border{ border-color:rgb(220, 196, 185) }
```

If you want to add a box shadow in that color use:

Here you see how a box with a 4 pixel `rgb(220, 196, 185)` colored shadow looks like.

```
.boxshadow{ -moz-box-shadow:4px 4px 4px  
4px rgb(220, 196, 185); -webkit-box-  
shadow:4px 4px 4px 4px rgb(220, 196, 185);  
box-shadow:4px 4px 4px 4px rgb(220, 196,  
185) }
```

Background

The CSS property to change the background color of an element to HunterLab 76.2878, 2.2344, 11.3752 is called "background". The background property can be set on classes, ids or directly on the HTML element.

```
.background, #background, body{  
background: rgb(220, 196, 185) }
```

If only the background color should be changed can be used:

```
.background{ background-color: rgb(220,  
196, 185) }
```

This example shows the color as background, it is applied via the CSS property "background".

To optimize and compress your CSS code, you can use our [online CSS compressor and optimizer](#) based on csstidy. If you want to create a linear or radial gradient as background or border, check our [CSS Gradient Generator](#).

Hey! You found this booklet interesting? Support Converting Colors with the new Membership Option!

The pro membership hides all ads, plus gives you double the colors in the color bucket, and more awesome pro features!

[Learn more, Memberships starting at \\$2.50/m!](#)

**Follow me
on Twitter!**

@ConvertingColor