

Converting Colors

HunterLab(76.3827, -0.5690,
8.7961)

Have a look what the booklet for
HunterLab(76.3827, -0.5690, 8.7961)
contains.

HunterLab(76.3517, -0.2670, 8.7672)	3
<i>Conversions</i>	4
<i>Details</i>	6
<i>Harmonies</i>	12
<i>Previews</i>	24
<i>Color Blindness Simulation</i>	28
<i>CSS Examples</i>	31

Color

**HunterLab(76.3517, -0.2670,
8.7672)**

Conversions

Conversions Part 1

Format	Color
Hex	D5C6BF
RGB	213, 198, 191
RGB Percent	84%, 78%, 75%
CMY	0.1647, 0.2235, 0.2510
CMYK	0.00, 0.07, 0.10, 0.16
HSL	19°, 21%, 79%
HSV	19°, 10%, 84%
XYZ	57.0386, 58.2958, 57.5361
YIQ	201.6870, 11.1870, 1.0030

Conversions

Conversions Part 2

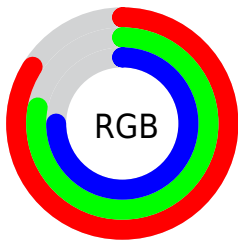
Format	Color
R _Y B	213, 201, 191
Decimal	14010047
CIE Lab	80.90, 4.05, 5.38
CIE LCh	81, 6.739, 53.012
Yxy	58.2984, 0.3299, 0.3372
Android (android.graphics.Color)	4292200127 (0xFFD5C6BF)
YUV	201.6870, -5.2687, 9.9215
Hunter-Lab	76.3517, -0.2670, 8.7672

Details

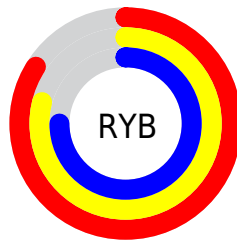
The HunterLab color $76.3517, -0.2670, 8.7672$ is a light color, and the websafe version is hex `CCCCCC`. A complement of this color would be $77.4738, -7.5522, -0.5693$, and the grayscale version is $76.7379, -4.0945, 4.1693$.

A 20% lighter version of the original color is $99.7474, -6.7215, 9.0414$, and $53.8986, 0.5970, 6.7726$ is the 20% darker color. If you saturate the color by 10%, you get $71.4878, 3.9930, 12.7019$, and if you desaturate by 10%, it is $81.4029, -4.2273, 4.5736$.

Distribution



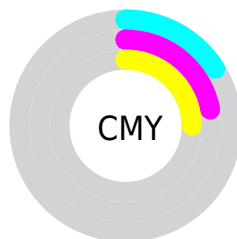
- Red (84%)
- Green (78%)
- Blue (75%)



- Red (84%)
- Yellow (79%)
- Blue (75%)



- Cyan (0%)
- Magenta (7%)
- Yellow (10%)
- Black (16%)



- Cyan (16%)
- Magenta (22%)
- Yellow (25%)

Brightness & Saturation Gradients

These gradients show how the HunterLab color 76.3517, -0.2670, 8.7672 changes by changing the brightness by 10 percent. The first figure shows a shift by +10% for each color and the second figure -10%.

Similar to the brightness gradients but the following saturation gradients show a change of the HunterLab color 76.3517, -0.2670, 8.7672 by changing the saturation by 10% instead.

■ 76.3517, -0.2670,
8.7672

■ 76.3517, -0.2670,
8.7672

204.5231, -5.6585,
17.6392

■ 64.8449, 0.1477,
7.8811

■ 101.1718, -1.2270,
10.6013

■ 53.9809, 0.5186,
7.0125

114.4269, -1.7627,
11.5474

■ 43.8021, 0.8392,
6.1610

128.2151, -2.3335,
12.5136

■ 34.3583, 1.1036,
5.3243

142.5165, -2.9376,
13.4996

■ 25.7119, 1.3041,
4.4983

157.3134, -3.5734,
14.5053

■ 17.9445, 1.4293,
3.6751

172.5896, -4.2396,

■ 11.1699, 1.4614,

15.5307

2.8395

188.3306, -4.9350,
16.5754

3.1642, 5.4144,
2.2150

0.0000, NaN, NaN

76.3517, -0.2670,
8.7672

76.3517, -0.2670,
8.7672

71.4878, 3.9930,
12.7019

81.4029, -4.2273,
4.5736

66.8287, 8.5865,
16.3254

86.6173, -7.9109,
0.1568

62.4024, 13.5324,
19.5789

91.9803, -11.3488,
-4.4509

58.2393, 18.8390,
22.3901

96.3775, -18.1767,
0.8679

■ 54.3741, 24.4917,
24.6755

■ 50.8453, 30.4395,
26.3455

■ 47.6933, 36.5784,
27.3172

■ 44.9570, 42.7366,
27.5402

■ 42.7289, 48.4458,
27.1775

Harmonies

Analogous

The Analogous color harmony consists of three colors that are next to each other on the color wheel.



76.3534, 1.7790, 6.4512



76.3517, -0.2670, 8.7672



76.3534, -3.3138, 9.8423

Triad

The Triadic color harmony groups three colors that are evenly spaced from another and form a triangle on the color wheel.



76.3534, -0.2691, 8.7684



76.3534, -10.2023, 4.8782



76.3534, -1.6116, -1.5400

Complementary

The Complementary color scheme is a pair of colors which are on the opposite of each other on the color wheel.



76.3517, -0.2670, 8.7672



77.4738, -7.5522, -0.5693

Split Complementary

Split-complementary colors differ from the complementary color scheme. The scheme consists of three colors, the original color and two neighbors of the complement color.



76.3534, -4.8394, -2.0041



76.3517, -0.2670, 8.7672



76.3534, -9.7638, 1.7875

Square

The Square scheme is like the rectangle color scheme, but the four colors are evenly spaced on the color wheel.



76.3534, -0.2691, 8.7684



76.3534, -9.0220, 7.6582



76.3534, -7.8139, -0.7631



76.3534, 0.9948, 0.4799

Rectangle

The Rectangle color scheme consists of four colors that form a rectangle on the color wheel.



76.3517, -0.2670, 8.7672



76.3534, -5.4847, 9.7420



76.3534, -7.8139, -0.7631



76.3534, -2.6613, -1.8865

Sweetspot

The Sweet Spot groups the original color and five complimentary colors.



76.3534, -0.2691, 8.7684



98.0994, -3.9057, 7.0253



74.7438, 5.8408, -0.1778



45.1518, -1.6276, 3.4451

0.0000, NaN, NaN



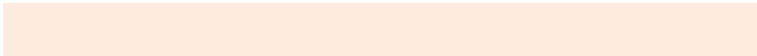
46.2646, -2.4686, 2.5136

Same Dimension

The Same Dimension uses a secret algorithm to generate beautiful new colors.



76.3534, -0.2691, 8.7684



92.5148, 0.5795, 11.6400



79.6824, -5.8480, 12.3212



36.1382, -0.3007, 3.9521



33.6393, 37.1720, 21.3791



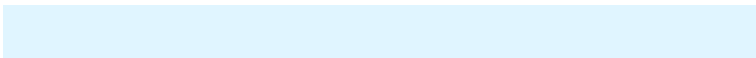
9.1101, 6.8913, 5.7342

Inverse Universe

The Inverse Universe completely reimagines the original color for something new.



77.4738, -7.5522, -0.5693



94.1236, -9.8808, -1.7695



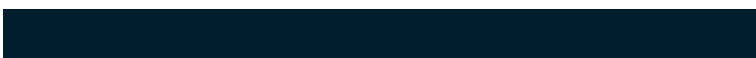
74.1123, -1.9991, -4.7285



36.6197, -3.4306, -0.0610



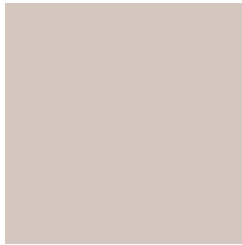
39.4098, -7.2107, -33.6929



10.4062, -2.8511, -6.8521

Previews

White Background



This preview shows how the HunterLab color 76.3517, -0.2670, 8.7672 looks on a white background.

Color Contrast Check

Large Text (above 18pt) WCAG AA × Fail

Any Text WCAG AA × Fail

Large Text (above 18pt) WCAG AAA × Fail

Any Text WCAG AAA × Fail

Black Background



This preview shows how the HunterLab color 76.3517, -0.2670, 8.7672 looks on a black background.

Color Contrast Check

Large Text (above 18pt) WCAG AA ✓ Pass

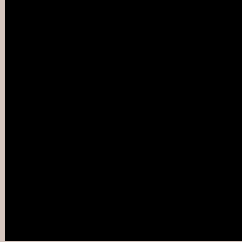
Any Text WCAG AA ✓ Pass

Large Text (above 18pt) WCAG AAA ✓ Pass

Any Text WCAG AAA ✓ Pass

If you want to check with other color combinations, try the [Color Contrast Checker](#).

HunterLab 76.3517, -0.2670, 8.7672 Background



This preview shows how black text looks on a background with the HunterLab color 76.3517, -0.2670, 8.7672.



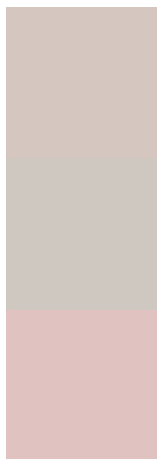
This preview shows how white text looks on a background with the HunterLab color 76.3517, -0.2670,

8.7672.

Color Blindness Simulation

Color vision deficiency is a very complex topic, and I could not describe the different causes any better than Wikipedia does, so if you want to learn more, you should check out their [article about color blindness](#).

Dichromacy



Original Color

76.3517, -0.2670, 8.7672

Protanopia

76.4066, -3.1169, 8.3294

Deuteranopia

76.3129, 5.7352, 8.3791



Tritanopia

76.3428, 5.4417, -0.2158

Trichromacy



Original Color

76.3517, -0.2670, 8.7672

Protanomaly

76.2941, -1.9518, 8.2234

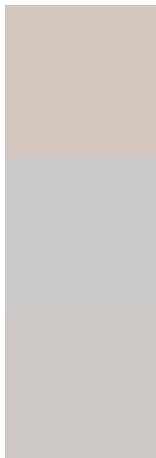
Deuteranomaly

76.1916, 3.8219, 8.2092

Tritanomaly

76.3143, 3.3845, 3.1879

Monochromacy



Original Color

76.3517, -0.2670, 8.7672

Achromatopsia

76.8517, -4.1006, 4.1755

Achromatomaly

76.7934, -2.9816, 6.0188

CSS Examples

Text

The CSS property to change the color of the text to HunterLab 76.3517, -0.2670, 8.7672 is called "color". The color property can be set on classes, ids or directly on the HTML element.

This example shows how text in the color `rgb(213, 198, 191)` looks like.

```
.text, #text, p{  
    color:rgb(213, 198, 191)  
}
```

If you want to add a text shadow in that color use the text-shadow property, you can generate a text shadow directly with our [CSS Text Shadow Generator](#).

Here you see how black text with a 4 pixel rgb(213, 198, 191) colored shadow looks like.

```
.shadow{ text-shadow: 4px 4px 2px rgb(213, 198, 191) }
```

Border

The CSS property to change the border of an element to HunterLab 76.3517, -0.2670, 8.7672 is called "border". The border property can be set on classes, ids or directly on the HTML element.

This example shows the color as border, it can be applied via the CSS property "border" or "border-color".

```
.border, #border, table{ border:4px solid rgb(213, 198, 191) }
```


If only the border color should be changed use the property `border-color`.

```
.border{ border-color:rgb(213, 198, 191) }
```

If you want to add a box shadow in that color use:

Here you see how a box with a 4 pixel `rgb(213, 198, 191)` colored shadow looks like.

```
.boxshadow{ -moz-box-shadow:4px 4px 4px  
4px rgb(213, 198, 191); -webkit-box-  
shadow:4px 4px 4px 4px rgb(213, 198, 191);  
box-shadow:4px 4px 4px 4px rgb(213, 198,  
191) }
```

Background

The CSS property to change the background color of an element to HunterLab 76.3517, -0.2670, 8.7672 is called "background". The background property can be set on classes, ids or directly on the HTML element.

```
.background, #background, body{  
background: rgb(213, 198, 191) }
```

If only the background color should be changed can be used:

```
.background{ background-color: rgb(213,  
198, 191) }
```

This example shows the color as background, it is applied via the CSS property "background".

To optimize and compress your CSS code, you can use our [online CSS compressor and optimizer](#) based on csstidy. If you want to create a linear or radial gradient as background or border, check our [CSS Gradient Generator](#).

Hey! You found this booklet interesting? Support Converting Colors with the new Membership Option!

The pro membership hides all ads, plus gives you double the colors in the color bucket, and more awesome pro features!

[Learn more, Memberships starting at \\$2.50/m!](#)

**Follow me
on Twitter!**

@ConvertingColor