

Converting Colors

HunterLab(76.4648, 2.8122,
7.6622)

Have a look what the booklet for
HunterLab(76.4648, 2.8122, 7.6622)
contains.

HunterLab(76.3416, 2.9307, 7.4537)	3
<i>Conversions</i>	4
<i>Details</i>	6
<i>Harmonies</i>	12
<i>Previews</i>	24
<i>Color Blindness Simulation</i>	28
<i>CSS Examples</i>	31

Color

**HunterLab(76.3416, 2.9307,
7.4537)**

Conversions

Conversions Part 1

Format	Color
Hex	DAC4C2
RGB	218, 196, 194
RGB Percent	85%, 77%, 76%
CMY	0.1451, 0.2314, 0.2392
CMYK	0.00, 0.10, 0.11, 0.15
HSL	5°, 24%, 81%
HSV	5°, 11%, 85%
XYZ	58.3911, 58.2804, 59.2107
YIQ	202.3500, 13.7540, 4.0420

Conversions

Conversions Part 2

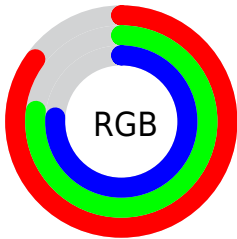
Format	Color
R _Y B	218, 196, 194
Decimal	14337218
CIE Lab	80.90, 7.40, 3.81
CIE LCh	81, 8.324, 27.274
Yxy	58.2830, 0.3320, 0.3314
Android (android.graphics.Color)	4292527298 (0xFFDAC4C2)
YUV	202.3500, -4.1165, 13.7251
Hunter-Lab	76.3416, 2.9307, 7.4537

Details

The HunterLab color **76.3416, 2.9307, 7.4537** is a light color, and the websafe version is hex **CCCCCC**. A complement of this color would be **81.0197, -10.7868, 1.1946**, and the grayscale version is **77.0155, -4.1094, 4.1844**.

A 20% lighter version of the original color is **99.2032, -5.1505, 6.9843**, and **53.8758, 3.4922, 5.9548** is the 20% darker color. If you saturate the color by 10%, you get **69.9661, 9.9936, 10.1276**, and if you desaturate by 10%, it is **83.0406, -3.8055, 4.8138**.

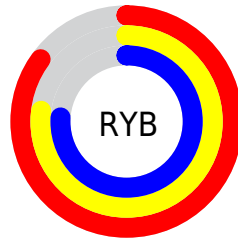
Distribution



Red (85%)

Green (77%)

Blue (76%)



Red (85%)

Yellow (77%)

Blue (76%)

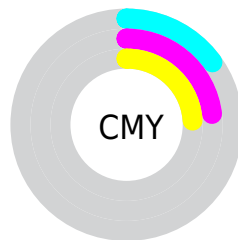


Cyan (0%)

Magenta (10%)

Yellow (11%)

Black (15%)



Cyan (15%)


Magenta (23%)


Yellow (24%)

Brightness & Saturation Gradients


These gradients show how the HunterLab color 76.3416, 2.9307, 7.4537 changes by changing the brightness by 10 percent. The first figure shows a shift by +10% for each color and the second figure -10%.


Similar to the brightness gradients but the following saturation gradients show a change of the HunterLab color 76.3416, 2.9307, 7.4537 by changing the saturation by 10% instead.


 76.3416, 2.9307,
7.4537

 76.3416, 2.9307,
7.4537

204.5091, -1.2751,
15.7652

 64.8353, 3.1853,
6.6454


 101.1607, 2.2690,
9.1446

 53.9719, 3.3872,
5.8595


114.4153, 1.8733,
10.0242

 43.7937, 3.5284,
5.0971

128.2031, 1.4373,
10.9265

 34.3506, 3.6007,
4.3574

142.5041, 0.9635,
11.8512

 25.7048, 3.5932,
3.6387

157.3006, 0.4537,
12.7977

 17.9382, 3.4901,
2.9372

172.5764, -0.0904,

 11.1645, 3.2666,

13.7658

2.2440

188.3170, -0.6671,
14.7551

■ 3.1492, 10.0690,
2.2045

0.0000, NaN, NaN

■ 76.3416, 2.9307,
7.4537

■ 76.3416, 2.9307,
7.4537

■ 69.9661, 9.9936,
10.1276

■ 83.0406, -3.8055,
4.8138

■ 63.9631, 17.4046,
12.8151

■ 90.0145, -10.2403,
2.2098

■ 58.4011, 25.1396,
15.4824

■ 96.7707, -16.7591,
1.3714

■ 53.3606, 33.1078,
18.0655

■ 48.9352, 41.1057,
20.4602

■ 45.2250, 48.7753,
22.5175

■ 42.3214, 55.5999,
24.0611

■ 40.2822, 60.9919,
24.9426

■ 39.1724, 64.2025,
25.2618

Harmonies

Analogous

The Analogous color harmony consists of three colors that are next to each other on the color wheel.



76.3433, 3.8131, 3.8043



76.3416, 2.9307, 7.4537



76.3433, 0.1545, 10.0970

Triad

The Triadic color harmony groups three colors that are evenly spaced from another and form a triangle on the color wheel.



76.3433, 2.9285, 7.4549



76.3433, -10.4840, 8.0321



76.3433, -4.4456, -3.5754

Complementary

The Complementary color scheme is a pair of colors which are on the opposite of each other on the color wheel.



76.3416, 2.9307, 7.4537



81.0197, -10.7868, 1.1946

Split Complementary

Split-complementary colors differ from the complementary color scheme. The scheme consists of three colors, the original color and two neighbors of the complement color.



76.3433, -8.2195, -2.3054



76.3416, 2.9307, 7.4537



76.3433, -11.6602, 4.5052

Square

The Square scheme is like the rectangle color scheme, but the four colors are evenly spaced on the color wheel.



76.3433, 2.9285, 7.4549



76.3433, -7.5940, 10.4179



76.3433, -10.8398, 0.7020



76.3433, -0.4963, -2.6867

Rectangle

The Rectangle color scheme consists of four colors that form a rectangle on the color wheel.



76.3416, 2.9307, 7.4537



76.3433, -2.3640, 10.9980



76.3433, -10.8398, 0.7020



76.3433, -5.7762, -3.3854

Sweetspot

The Sweet Spot groups the original color and five complimentary colors.



76.3433, 2.9285, 7.4549



97.5320, -2.9524, 6.3819



76.4511, 7.7026, -3.1397



44.8200, -1.0686, 3.0702

0.0000, NaN, NaN



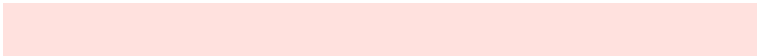
46.2646, -2.4686, 2.5136

Same Dimension

The Same Dimension uses a secret algorithm to generate beautiful new colors.



76.3433, 2.9285, 7.4549



89.5377, 5.2406, 9.5728



79.9457, -3.2423, 11.3528



36.3666, 0.8687, 3.3075



30.4253, 49.3413, 19.6117



8.1346, 11.3023, 5.2104

Inverse Universe

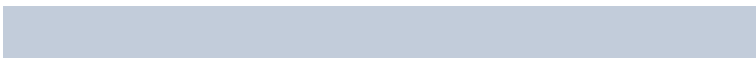
The Inverse Universe completely reimagines the original color for something new.



81.0197, -10.7868, 1.1946



96.1731, -14.2309, 0.6873



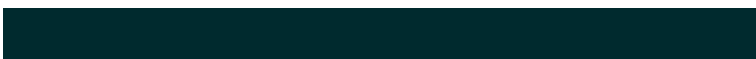
77.2774, -4.7358, -3.3561



38.2542, -4.6654, 0.7811



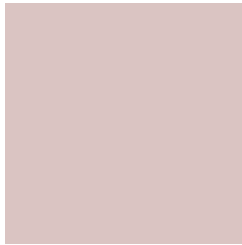
52.7276, -24.6810, -12.6258



13.6279, -6.5391, -2.9175

Previews

White Background



This preview shows how the HunterLab color 76.3416, 2.9307, 7.4537 looks on a white background.

Color Contrast Check

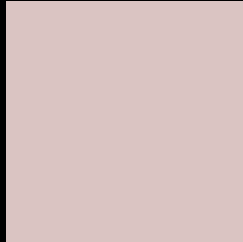
Large Text (above 18pt) WCAG AA × Fail

Any Text WCAG AA × Fail

Large Text (above 18pt) WCAG AAA × Fail

Any Text WCAG AAA × Fail

Black Background



This preview shows how the HunterLab color 76.3416, 2.9307, 7.4537 looks on a black background.

Color Contrast Check

Large Text (above 18pt) WCAG AA ✓ Pass

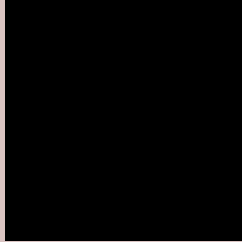
Any Text WCAG AA ✓ Pass

Large Text (above 18pt) WCAG AAA ✓ Pass

Any Text WCAG AAA ✓ Pass

If you want to check with other color combinations, try the [Color Contrast Checker](#).

HunterLab 76.3416, 2.9307, 7.4537 Background



This preview shows how black text looks on a background with the HunterLab color 76.3416, 2.9307, 7.4537.



This preview shows how white text looks on a background with the HunterLab color 76.3416, 2.9307,

7.4537.

Color Blindness Simulation

Color vision deficiency is a very complex topic, and I could not describe the different causes any better than Wikipedia does, so if you want to learn more, you should check out their [article about color blindness](#).

Dichromacy



Original Color

76.3416, 2.9307, 7.4537

Protanopia

76.4303, -2.7997, 6.5343

Deuteranopia

76.2670, 5.6984, 7.4175



Tritanopia

76.4216, 7.1429, 0.4166

Trichromacy



Original Color

76.3416, 2.9307, 7.4537

Protanomaly

76.4779, -1.1429, 7.0789

Deuteranomaly

76.3527, 4.4821, 7.4935

Tritanomaly

76.4525, 5.4255, 2.9021

Monochromacy



Original Color

76.3416, 2.9307, 7.4537

Achromatopsia

76.8517, -4.1006, 4.1755

Achromatomaly

76.7085, -1.6585, 5.4750

CSS Examples

Text

The CSS property to change the color of the text to HunterLab 76.3416, 2.9307, 7.4537 is called "color". The color property can be set on classes, ids or directly on the HTML element.

This example shows how text in the color `rgb(218, 196, 194)` looks like.

```
.text, #text, p{  
    color:rgb(218, 196, 194)  
}
```

If you want to add a text shadow in that color use the text-shadow property, you can generate a text shadow directly with our [CSS Text Shadow Generator](#).

Here you see how black text with a 4 pixel rgb(218, 196, 194) colored shadow looks like.

```
.shadow{ text-shadow: 4px 4px 2px rgb(218, 196, 194) }
```

Border

The CSS property to change the border of an element to HunterLab 76.3416, 2.9307, 7.4537 is called "border".

The border property can be set on classes, ids or directly on the HTML element.

This example shows the color as border, it can be applied via the CSS property "border" or "border-color".

```
.border, #border, table{ border:4px solid rgb(218, 196, 194) }
```


If only the border color should be changed use the property `border-color`.

```
.border{ border-color:rgb(218, 196, 194) }
```

If you want to add a box shadow in that color use:

Here you see how a box with a 4 pixel `rgb(218, 196, 194)` colored shadow looks like.

```
.boxshadow{ -moz-box-shadow:4px 4px 4px  
4px rgb(218, 196, 194); -webkit-box-  
shadow:4px 4px 4px 4px rgb(218, 196, 194);  
box-shadow:4px 4px 4px 4px rgb(218, 196,  
194) }
```

Background

The CSS property to change the background color of an element to HunterLab 76.3416, 2.9307, 7.4537 is called "background". The background property can be set on classes, ids or directly on the HTML element.

```
.background, #background, body{  
background: rgb(218, 196, 194) }
```

If only the background color should be changed can be used:

```
.background{ background-color: rgb(218,  
196, 194) }
```

This example shows the color as background, it is applied via the CSS property "background".

To optimize and compress your CSS code, you can use our [online CSS compressor and optimizer](#) based on csstidy. If you want to create a linear or radial gradient as background or border, check our [CSS Gradient Generator](#).

Hey! You found this booklet interesting? Support Converting Colors with the new Membership Option!

The pro membership hides all ads, plus gives you double the colors in the color bucket, and more awesome pro features!

[Learn more, Memberships starting at \\$2.50/m!](#)

**Follow me
on Twitter!**

@ConvertingColor