

Converting Colors

HunterLab(76.4664, 2.2051,
6.2657)

Have a look what the booklet for
HunterLab(76.4664, 2.2051, 6.2657)
contains.

HunterLab(76.5262, 2.2132, 6.2681)	3
<i>Conversions</i>	4
<i>Details</i>	6
<i>Harmonies</i>	12
<i>Previews</i>	24
<i>Color Blindness Simulation</i>	28
<i>CSS Examples</i>	31

Color

**HunterLab(76.5262, 2.2132,
6.2681)**

Conversions

Conversions Part 1

Format	Color
Hex	D8C5C5
RGB	216, 197, 197
RGB Percent	85%, 77%, 77%
CMY	0.1529, 0.2274, 0.2274
CMYK	0.00, 0.09, 0.09, 0.15
HSL	0°, 20%, 81%
HSV	0°, 9%, 85%
XYZ	58.3631, 58.5626, 61.0509
YIQ	202.6810, 11.3240, 4.0280

Conversions

Conversions Part 2

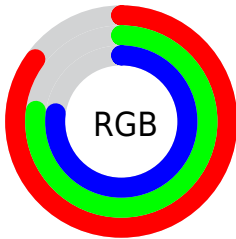
Format	Color
R _Y B	216, 197, 197
Decimal	14206405
CIE Lab	81.05, 6.66, 2.41
CIE LCh	81, 7.081, 19.896
Yxy	58.5652, 0.3279, 0.3291
Android (android.graphics.Color)	4292396485 (0xFFD8C5C5)
YUV	202.6810, -2.8007, 11.6808
Hunter-Lab	76.5262, 2.2132, 6.2681

Details

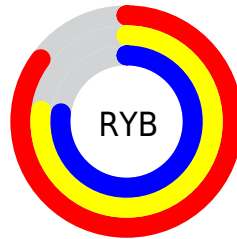
The HunterLab color $76.5262, 2.2132, 6.2681$ is a light color, and the websafe version is hex `CCCCCC`. A complement of this color would be $81.2026, -10.2646, 2.4219$, and the grayscale version is $77.1521, -4.1166, 4.1918$.

A 20% lighter version of the original color is $99.6491, -4.9818, 5.5265$, and $54.0418, 2.7937, 4.8390$ is the 20% darker color. If you saturate the color by 10%, you get $69.6631, 10.0656, 8.4080$, and if you desaturate by 10%, it is $83.7542, -5.3104, 4.2682$.

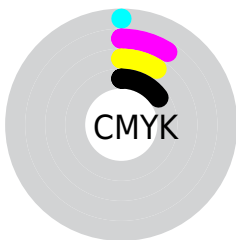
Distribution



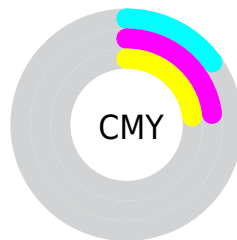
- Red (85%)
- Green (77%)
- Blue (77%)



- Red (85%)
- Yellow (77%)
- Blue (77%)



- Cyan (0%)
- Magenta (9%)
- Yellow (9%)
- Black (15%)



- Cyan (15%)
- Magenta (23%)
- Yellow (23%)

Brightness & Saturation Gradients

These gradients show how the HunterLab color 76.5262, 2.2132, 6.2681 changes by changing the brightness by 10 percent. The first figure shows a shift by +10% for each color and the second figure -10%.

Similar to the brightness gradients but the following saturation gradients show a change of the HunterLab color 76.5262, 2.2132, 6.2681 by changing the saturation by 10% instead.

■ 76.5262, 2.2132,
6.2681

■ 76.5262, 2.2132,
6.2681

204.7654, -2.2590,
14.0869

■ 65.0101, 2.5038,
5.5278

101.3634, 1.4845,
7.8335

■ 54.1363, 2.7437,
4.8142

114.6266, 1.0573,
8.6547

■ 43.9471, 2.9252,
4.1295

128.4225, 0.5911,
9.5009

■ 34.4921, 3.0407,
3.4741

142.7314, 0.0879,
10.3716

■ 25.8333, 3.0800,
2.8486

157.5354, -0.4502,
11.2660

■ 18.0522, 3.0282,
2.2523

172.8186, -1.0217,

■ 11.2619, 2.8619,

12.1838

1.6826

188.5664, -1.6250,
13.1242

■ 3.4127, 8.3191,
2.3889

0.0000, NaN, NaN

■ 76.5262, 2.2132,
6.2681

■ 76.5262, 2.2132,
6.2681

■ 69.6631, 10.0656,
8.4080

■ 83.7542, -5.3104,
4.2682

■ 63.2260, 18.2627,
10.6920

■ 91.2898, -12.5315,
2.3900

■ 57.2994, 26.7604,
13.1132

■ 96.6122, -17.3299,
1.1687

■ 51.9852, 35.4187,
15.6320

■ 47.4020, 43.9380,
18.1564

■ 43.6747, 51.8088,
20.5245

■ 40.9095, 58.3426,
22.5133

■ 39.1523, 62.8670,
23.9008

■ 38.2912, 65.2046,
24.6207

Harmonies

Analogous

The Analogous color harmony consists of three colors that are next to each other on the color wheel.



76.5279, 2.5119, 3.0572



76.5262, 2.2132, 6.2681



76.5279, 0.2060, 8.8090

Triad

The Triadic color harmony groups three colors that are evenly spaced from another and form a triangle on the color wheel.



76.5279, 2.2111, 6.2693



76.5279, -9.0651, 8.0965



76.5279, -5.2406, -2.2695

Complementary

The Complementary color scheme is a pair of colors which are on the opposite of each other on the color wheel.



76.5262, 2.2132, 6.2681



81.2026, -10.2646, 2.4219

Split Complementary

Split-complementary colors differ from the complementary color scheme. The scheme consists of three colors, the original color and two neighbors of the complement color.



76.5279, -8.2882, -0.7883



76.5262, 2.2132, 6.2681



76.5279, -10.4705, 5.2577

Square

The Square scheme is like the rectangle color scheme, but the four colors are evenly spaced on the color wheel.



76.5279, 2.2111, 6.2693



76.5279, -6.3182, 9.8313



76.5279, -10.1886, 2.0004



76.5279, -1.8308, -1.9694

Rectangle

The Rectangle color scheme consists of four colors that form a rectangle on the color wheel.



76.5262, 2.2132, 6.2681



76.5279, -1.8081, 9.8242



76.5279, -10.1886, 2.0004



76.5279, -6.3404, -1.9610

Sweetspot

The Sweet Spot groups the original color and five complimentary colors.



76.5279, 2.2111, 6.2693



97.3313, -2.6139, 6.1535



77.1298, 5.4546, -2.3174



44.7027, -0.8700, 2.9371

0.0000, NaN, NaN



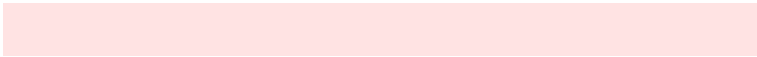
46.2646, -2.4686, 2.5136

Same Dimension

The Same Dimension uses a secret algorithm to generate beautiful new colors.



76.5279, 2.2111, 6.2693



90.3976, 4.8186, 8.1458



79.3818, -2.6748, 9.4137



35.2437, 1.2451, 2.9633



29.3970, 50.3368, 18.9955



7.2206, 12.3589, 4.6657

Inverse Universe

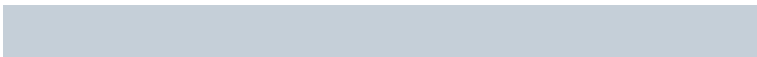
The Inverse Universe completely reimagines the original color for something new.



81.2026, -10.2646, 2.4219



97.4983, -14.1416, 2.2982



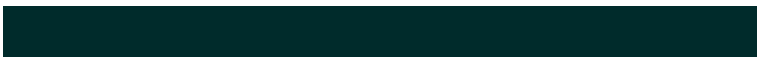
78.2385, -5.4738, -1.1178



37.5599, -4.9369, 1.0568



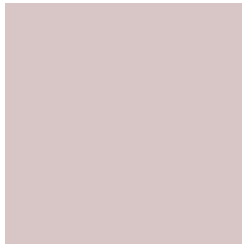
56.5604, -29.9781, -5.9814



13.8913, -7.3630, -1.4683

Previews

White Background



This preview shows how the HunterLab color 76.5262, 2.2132, 6.2681 looks on a white background.

Color Contrast Check

Large Text (above 18pt) WCAG AA × Fail

Any Text WCAG AA × Fail

Large Text (above 18pt) WCAG AAA × Fail

Any Text WCAG AAA × Fail

Black Background



This preview shows how the HunterLab color 76.5262, 2.2132, 6.2681 looks on a black background.

Color Contrast Check

Large Text (above 18pt) WCAG AA ✓ Pass

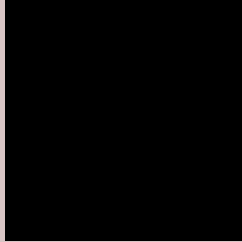
Any Text WCAG AA ✓ Pass

Large Text (above 18pt) WCAG AAA ✓ Pass

Any Text WCAG AAA ✓ Pass

If you want to check with other color combinations, try the [Color Contrast Checker](#).

HunterLab 76.5262, 2.2132, 6.2681 Background



This preview shows how black text looks on a background with the HunterLab color 76.5262, 2.2132, 6.2681.



This preview shows how white text looks on a background with the HunterLab color 76.5262, 2.2132,

Color Blindness Simulation

Color vision deficiency is a very complex topic, and I could not describe the different causes any better than Wikipedia does, so if you want to learn more, you should check out their [article about color blindness](#).

Dichromacy



Original Color

76.5262, 2.2132, 6.2681

Protanopia

76.4272, -2.6298, 5.1310

Deuteranopia

76.5448, 5.3056, 6.3436



Tritanopia

76.5433, 6.1132, 0.0435

Trichromacy



Original Color

76.5262, 2.2132, 6.2681

Protanomaly

76.4718, -0.9845, 5.6821

Deuteranomaly

76.6334, 4.0948, 6.4242

Tritanomaly

76.5763, 4.3942, 2.5435

Monochromacy



Original Color

76.5262, 2.2132, 6.2681

Achromatopsia

77.2788, -4.1234, 4.1987

Achromatomaly

77.0715, -1.8386, 4.9495

CSS Examples

Text

The CSS property to change the color of the text to HunterLab 76.5262, 2.2132, 6.2681 is called "color". The color property can be set on classes, ids or directly on the HTML element.

This example shows how text in the color `rgb(216, 197, 197)` looks like.

```
.text, #text, p{  
    color:rgb(216, 197, 197)  
}
```

If you want to add a text shadow in that color use the text-shadow property, you can generate a text shadow directly with our [CSS Text Shadow Generator](#).

Here you see how black text with a 4 pixel rgb(216, 197, 197) colored shadow looks like.

```
.shadow{ text-shadow: 4px 4px 2px rgb(216, 197, 197) }
```

Border

The CSS property to change the border of an element to HunterLab 76.5262, 2.2132, 6.2681 is called "border". The border property can be set on classes, ids or directly on the HTML element.

This example shows the color as border, it can be applied via the CSS property "border" or "border-color".

```
.border, #border, table{ border:4px solid rgb(216, 197, 197) }
```


If only the border color should be changed use the property `border-color`.

```
.border{ border-color:rgb(216, 197, 197) }
```

If you want to add a box shadow in that color use:

Here you see how a box with a 4 pixel `rgb(216, 197, 197)` colored shadow looks like.

```
.boxshadow{ -moz-box-shadow:4px 4px 4px  
4px rgb(216, 197, 197); -webkit-box-  
shadow:4px 4px 4px 4px rgb(216, 197, 197);  
box-shadow:4px 4px 4px 4px rgb(216, 197,  
197) }
```

Background

The CSS property to change the background color of an element to HunterLab 76.5262, 2.2132, 6.2681 is called "background". The background property can be set on classes, ids or directly on the HTML element.

```
.background, #background, body{  
background: rgb(216, 197, 197) }
```

If only the background color should be changed can be used:

```
.background{ background-color: rgb(216,  
197, 197) }
```

This example shows the color as background, it is applied via the CSS property "background".

To optimize and compress your CSS code, you can use our [online CSS compressor and optimizer](#) based on csstidy. If you want to create a linear or radial gradient as background or border, check our [CSS Gradient Generator](#).

Hey! You found this booklet interesting? Support Converting Colors with the new Membership Option!

The pro membership hides all ads, plus gives you double the colors in the color bucket, and more awesome pro features!

[Learn more, Memberships starting at \\$2.50/m!](#)

**Follow me
on Twitter!**

@ConvertingColor