

Converting Colors

HunterLab(76.4911, 0.5901,
16.3555)

Have a look what the booklet for
HunterLab(76.4911, 0.5901,
16.3555) contains.

HunterLab(76.4717, 0.7019, 16.4814)	3
<i>Conversions</i>	4
<i>Details</i>	6
<i>Harmonies</i>	12
<i>Previews</i>	24
<i>Color Blindness Simulation</i>	28
<i>CSS Examples</i>	31

Color

**HunterLab(76.4717, 0.7019,
16.4814)**

Conversions

Conversions Part 1

Format	Color
Hex	DEC5AD
RGB	222, 197, 173
RGB Percent	87%, 77%, 68%
CMY	0.1294, 0.2274, 0.3216
CMYK	0.00, 0.11, 0.22, 0.13
HSL	29°, 43%, 77%
HSV	29°, 22%, 87%
XYZ	57.6333, 58.4792, 47.7852
YIQ	201.7390, 22.6040, -2.1640

Conversions

Conversions Part 2

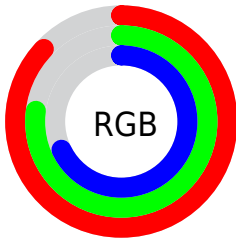
Format	Color
R _Y B	222, 220, 173
Decimal	14599597
CIE Lab	81.01, 5.08, 15.26
CIE LCh	81, 16.085, 71.600
Yxy	58.4819, 0.3516, 0.3568
Android (android.graphics.Color)	4292789677 (0xFFDEC5AD)
YUV	201.7390, -14.1683, 17.7689
Hunter-Lab	76.4717, 0.7019, 16.4814

Details

The HunterLab color $76.4717, 0.7019, 16.4814$ is a light color, and the websafe version is hex `CCCCCC`. A complement of this color would be $73.8546, -6.9205, -10.0915$, and the grayscale version is $76.7935, -4.0975, 4.1723$.

A 20% lighter version of the original color is $98.8661, -9.2857, 16.7410$, and $53.9744, 1.4497, 13.4135$ is the 20% darker color. If you saturate the color by 10%, you get $72.6231, 3.6351, 20.9797$, and if you desaturate by 10%, it is $80.4685, -1.8816, 11.4219$.

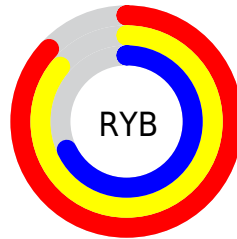
Distribution



Red (87%)

Green (77%)

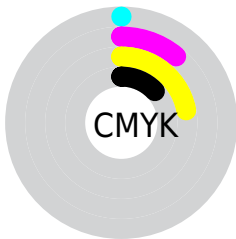
Blue (68%)



Red (87%)

Yellow (86%)

Blue (68%)

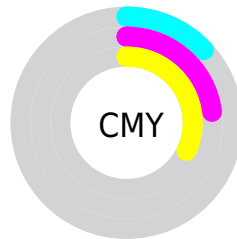


Cyan (0%)

Magenta (11%)

Yellow (22%)

Black (13%)



Cyan (13%)

Magenta (23%)

Yellow (32%)

Brightness & Saturation Gradients

These gradients show how the HunterLab color 76.4717, 0.7019, 16.4814 changes by changing the brightness by 10 percent. The first figure shows a shift by +10% for each color and the second figure -10%.

Similar to the brightness gradients but the following saturation gradients show a change of the HunterLab color 76.4717, 0.7019, 16.4814 by changing the saturation by 10% instead.

■ 76.4717, 0.7019,
16.4814

■ 76.4717, 0.7019,
16.4814

204.6898, -4.3290,
29.0333

■ 64.9586, 1.0675,
15.0778

■ 101.3036, -0.1675,
19.2633

■ 54.0878, 1.3869,
13.6550

114.5642, -0.6606,
20.6482

■ 43.9019, 1.6527,
12.2040

128.3578, -1.1904,
22.0337

■ 34.4503, 1.8585,
10.7105

142.6643, -1.7548,
23.4220

■ 25.7954, 1.9954,
9.1519

157.4661, -2.3523,
24.8149

■ 18.0186, 2.0507,
7.4910

172.7472, -2.9813,

■ 11.2332, 2.0042,

26.2137

6.4931

188.4928, -3.6406,
27.6195

■ 3.3371, 6.4514,
2.3360

0.0000, NaN, NaN

■ 76.4717, 0.7019,
16.4814

■ 76.4717, 0.7019,
16.4814

■ 72.6231, 3.6351,
20.9797

■ 80.4685, -1.8816,
11.4219

■ 68.9304, 6.9476,
24.8513

■ 84.5965, -4.1328,
5.8552

■ 65.4097, 10.6544,
28.0323

■ 88.8467, -6.0798,
-0.1660

■ 62.0762, 14.7638,
30.4589

■ 92.9703, -9.0682,
-3.2051

■ 58.9455, 19.2703,
32.0750

■ 96.6424, -14.9016,
1.2480

■ 56.0334, 24.1474,
32.8448

■ 97.0926, -15.6028,
1.7822

■ 53.3538, 29.3384,
32.7729

■ 51.3953, 33.5849,
32.2575

Harmonies

Analogous

The Analogous color harmony consists of three colors that are next to each other on the color wheel.



76.4734, 7.4379, 13.0286



76.4717, 0.7019, 16.4814



76.4734, -7.0722, 16.8424

Triad

The Triadic color harmony groups three colors that are evenly spaced from another and form a triangle on the color wheel.



76.4734, 0.6995, 16.4825



76.4734, -18.2065, 1.2427



76.4734, 6.1129, -7.2733

Complementary

The Complementary color scheme is a pair of colors which are on the opposite of each other on the color wheel.



76.4717, 0.7019, 16.4814



73.8546, -6.9205, -10.0915

Split Complementary

Split-complementary colors differ from the complementary color scheme. The scheme consists of three colors, the original color and two neighbors of the complement color.



76.4734, -1.0503, -11.1461



76.4717, 0.7019, 16.4814



76.4734, -14.9627, -5.9110

Square

The Square scheme is like the rectangle color scheme, but the four colors are evenly spaced on the color wheel.



76.4734, 0.6995, 16.4825



76.4734, -17.7803, 8.5236



76.4734, -8.7537, -10.6240



76.4734, 10.6485, -0.4713

Rectangle

The Rectangle color scheme consists of four colors that form a rectangle on the color wheel.



76.4717, 0.7019, 16.4814



76.4734, -11.7734, 15.3279



76.4734, -8.7537, -10.6240



76.4734, 3.9206, -8.9902

Sweetspot

The Sweet Spot groups the original color and five complimentary colors.



76.4734, 0.6995, 16.4825



96.5560, -3.5695, 10.1663



70.3629, 17.1476, -1.5231



44.5354, -1.5770, 4.8863

0.0000, NaN, NaN



46.2646, -2.4686, 2.5136

Same Dimension

The Same Dimension uses a secret algorithm to generate beautiful new colors.



76.4734, 0.6995, 16.4825



87.5950, 2.1851, 21.5423



83.8790, -11.5022, 23.5384



38.4755, -1.1809, 4.7232



39.8888, 25.2274, 25.0209



11.3215, 4.8059, 7.0604

Inverse Universe

The Inverse Universe completely reimagines the original color for something new.



73.8546, -6.9205, -10.0915



83.9762, -8.3229, -15.1962



66.6035, 5.4386, -20.3831



37.9388, -2.7481, -0.7180



32.2546, 7.0140, -55.4567



9.4883, 0.0336, -11.9321

Previews

White Background



This preview shows how the HunterLab color 76.4717, 0.7019, 16.4814 looks on a white background.

Color Contrast Check

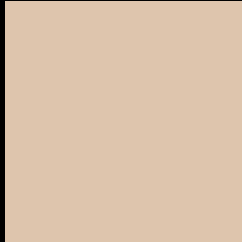
Large Text (above 18pt) WCAG AA × Fail

Any Text WCAG AA × Fail

Large Text (above 18pt) WCAG AAA × Fail

Any Text WCAG AAA × Fail

Black Background



This preview shows how the HunterLab color 76.4717, 0.7019, 16.4814 looks on a black background.

Color Contrast Check

Large Text (above 18pt) WCAG AA ✓ Pass

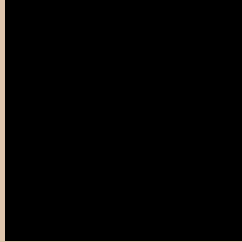
Any Text WCAG AA ✓ Pass

Large Text (above 18pt) WCAG AAA ✓ Pass

Any Text WCAG AAA ✓ Pass

If you want to check with other color combinations, try the [Color Contrast Checker](#).

HunterLab 76.4717, 0.7019, 16.4814 Background



This preview shows how black text looks on a background with the HunterLab color 76.4717, 0.7019, 16.4814.



This preview shows how white text looks on a background with the HunterLab color 76.4717, 0.7019,

Color Blindness Simulation

Color vision deficiency is a very complex topic, and I could not describe the different causes any better than Wikipedia does, so if you want to learn more, you should check out their [article about color blindness](#).

Dichromacy



Original Color

76.4717, 0.7019, 16.4814

Protanopia

76.6272, -4.8395, 15.7515

Deuteranopia

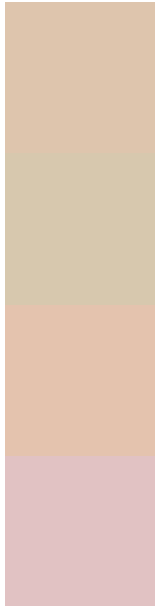
76.5692, 5.6132, 16.2722



Tritanopia

76.4022, 9.9240, 1.4426

Trichromacy



Original Color

76.4717, 0.7019, 16.4814

Protanomaly

76.6887, -3.1186, 16.2413

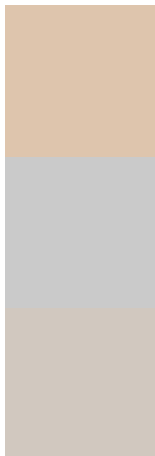
Deuteranomaly

76.5377, 4.0077, 16.2119

Tritanomaly

76.5057, 6.5559, 7.2455

Monochromacy



Original Color

76.4717, 0.7019, 16.4814

Achromatopsia

76.8517, -4.1006, 4.1755

Achromatomaly

76.5673, -2.6185, 8.9666

CSS Examples

Text

The CSS property to change the color of the text to HunterLab 76.4717, 0.7019, 16.4814 is called "color". The color property can be set on classes, ids or directly on the HTML element.

This example shows how text in the color `rgb(222, 197, 173)` looks like.

```
.text, #text, p{  
    color:rgb(222, 197, 173)  
}
```

If you want to add a text shadow in that color use the text-shadow property, you can generate a text shadow directly with our [CSS Text Shadow Generator](#).

Here you see how black text with a 4 pixel rgb(222, 197, 173) colored shadow looks like.

```
.shadow{ text-shadow: 4px 4px 2px rgb(222, 197, 173) }
```

Border

The CSS property to change the border of an element to HunterLab 76.4717, 0.7019, 16.4814 is called "border". The border property can be set on classes, ids or directly on the HTML element.

This example shows the color as border, it can be applied via the CSS property "border" or "border-color".

```
.border, #border, table{ border:4px solid rgb(222, 197, 173) }
```


If only the border color should be changed use the property `border-color`.

```
.border{ border-color:rgb(222, 197, 173) }
```

If you want to add a box shadow in that color use:

Here you see how a box with a 4 pixel `rgb(222, 197, 173)` colored shadow looks like.

```
.boxshadow{ -moz-box-shadow:4px 4px 4px  
4px rgb(222, 197, 173); -webkit-box-  
shadow:4px 4px 4px 4px rgb(222, 197, 173);  
box-shadow:4px 4px 4px 4px rgb(222, 197,  
173) }
```

Background

The CSS property to change the background color of an element to HunterLab 76.4717, 0.7019, 16.4814 is called "background". The background property can be set on classes, ids or directly on the HTML element.

```
.background, #background, body{  
background: rgb(222, 197, 173) }
```

If only the background color should be changed can be used:

```
.background{ background-color: rgb(222,  
197, 173) }
```

This example shows the color as background, it is applied via the CSS property "background".

To optimize and compress your CSS code, you can use our [online CSS compressor and optimizer](#) based on csstidy. If you want to create a linear or radial gradient as background or border, check our [CSS Gradient Generator](#).

Hey! You found this booklet interesting? Support Converting Colors with the new Membership Option!

The pro membership hides all ads, plus gives you double the colors in the color bucket, and more awesome pro features!

[Learn more, Memberships starting at \\$2.50/m!](#)

**Follow me
on Twitter!**

@ConvertingColor