

Converting Colors

HunterLab(76.5027, 3.1004,
11.1768)

Have a look what the booklet for
HunterLab(76.5027, 3.1004,
11.1768) contains.

HunterLab(76.5210, 3.0805, 11.2120)	3
<i>Conversions</i>	4
<i>Details</i>	6
<i>Harmonies</i>	12
<i>Previews</i>	24
<i>Color Blindness Simulation</i>	28
<i>CSS Examples</i>	31

Color

**HunterLab(76.5210, 3.0805,
11.2120)**

Conversions

Conversions Part 1

Format	Color
Hex	DEC4BA
RGB	222, 196, 186
RGB Percent	87%, 77%, 73%
CMY	0.1294, 0.2314, 0.2706
CMYK	0.00, 0.12, 0.16, 0.13
HSL	17°, 35%, 80%
HSV	17°, 16%, 87%
XYZ	58.7271, 58.5546, 54.6613
YIQ	202.6340, 18.7060, 2.4020

Conversions

Conversions Part 2

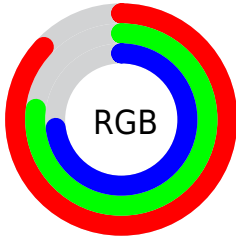
Format	Color
R_{YB}	222, 200, 186
Decimal	14599354
CIE Lab	81.05, 7.56, 8.37
CIE LCh	81, 11.277, 47.913
Yxy	58.5573, 0.3415, 0.3406
Android (android.graphics.Color)	4292789434 (0xFFDEC4BA)
YUV	202.6340, -8.2006, 16.9840
Hunter-Lab	76.5210, 3.0805, 11.2120

Details

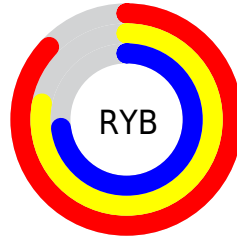
The HunterLab color $76.5210, 3.0805, 11.2120$ is a light color, and the websafe version is hex `CCCCCC`. A complement of this color would be $79.2456, -10.3381, -3.0553$, and the grayscale version is $77.1522, -4.1166, 4.1918$.

A 20% lighter version of the original color is $98.9552, -6.5102, 10.5297$, and $54.0878, 3.8337, 9.0712$ is the 20% darker color. If you saturate the color by 10%, you get $71.2988, 8.2245, 14.9496$, and if you desaturate by 10%, it is $81.9749, -1.7294, 7.2273$.

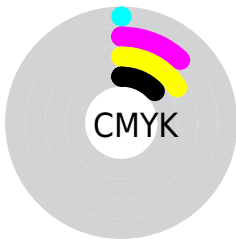
Distribution



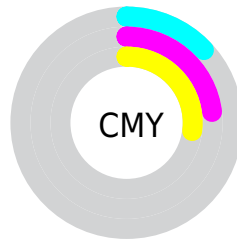
- Red (87%)
- Green (77%)
- Blue (73%)



- Red (87%)
- Yellow (78%)
- Blue (73%)



- Cyan (0%)
- Magenta (12%)
- Yellow (16%)
- Black (13%)





- Cyan (13%)
- Magenta (23%)
- Yellow (27%)

Brightness & Saturation Gradients

These gradients show how the HunterLab color 76.5210, 3.0805, 11.2120 changes by changing the brightness by 10 percent. The first figure shows a shift by +10% for each color and the second figure -10%.

Similar to the brightness gradients but the following saturation gradients show a change of the HunterLab color 76.5210, 3.0805, 11.2120 by changing the saturation by 10% instead.


 76.5210, 3.0805,
11.2120

 76.5210, 3.0805,
11.2120


204.7582, -1.0744,
21.1715

 65.0052, 3.3281,
10.1744


 101.3577, 2.4313,
13.3247

 54.1317, 3.5230,
9.1438

114.6206, 2.0416,
14.4003

 43.9428, 3.6567,
8.1178


128.4163, 1.6115,
15.4903

 34.4881, 3.7211,
7.0906

142.7250, 1.1432,
16.5953

 25.8297, 3.7052,
6.0529

157.5288, 0.6389,
17.7157

 18.0490, 3.5931,
4.9884

172.8118, 0.1001,

 11.2592, 3.3599,

18.8517

3.9499

188.5594, -0.4714,
20.0036

■ 3.4056, 9.4891,
2.3839

0.0000, NaN, NaN

■ 76.5210, 3.0805,
11.2120

■ 76.5210, 3.0805,
11.2120

■ 71.2988, 8.2245,
14.9496

■ 81.9749, -1.7294,
7.2273

■ 66.3336, 13.7337,
18.3811

■ 87.6295, -6.2288,
3.0353

■ 61.6634, 19.6160,
21.4374

■ 93.4647, -10.4521,
-1.3295

■ 57.3298, 25.8555,
24.0321

■ 97.0926, -15.6027,
1.7822

■ 53.3800, 32.3936,
26.0658

■ 49.8646, 39.1086,
27.4347

■ 46.8343, 45.7969,
28.0545

■ 44.3320, 52.1631,
27.9077

■ 43.5219, 54.3851,
27.7701

Harmonies

Analogous

The Analogous color harmony consists of three colors that are next to each other on the color wheel.



76.5227, 6.1619, 7.1742



76.5210, 3.0805, 11.2120



76.5227, -1.8762, 13.3024

Triad

The Triadic color harmony groups three colors that are evenly spaced from another and form a triangle on the color wheel.



76.5227, 3.0782, 11.2132



76.5227, -14.0858, 6.2274



76.5227, -0.8309, -5.9609

Complementary

The Complementary color scheme is a pair of colors which are on the opposite of each other on the color wheel.



76.5210, 3.0805, 11.2120



79.2456, -10.3381, -3.0553

Split Complementary

Split-complementary colors differ from the complementary color scheme. The scheme consists of three colors, the original color and two neighbors of the complement color.



76.5227, -6.2733, -6.2590



76.5210, 3.0805, 11.2120



76.5227, -13.8237, 1.0291

Square

The Square scheme is like the rectangle color scheme, but the four colors are evenly spaced on the color wheel.



76.5227, 3.0782, 11.2132



76.5227, -11.7244, 10.5620



76.5227, -10.9982, -3.6240



76.5227, 3.8619, -2.8361

Rectangle

The Rectangle color scheme consists of four colors that form a rectangle on the color wheel.



76.5210, 3.0805, 11.2120



76.5227, -5.5273, 13.4125



76.5227, -10.9982, -3.6240



76.5227, -2.6362, -6.4026

Sweetspot

The Sweet Spot groups the original color and five complimentary colors.



76.5227, 3.0782, 11.2132



96.6807, -2.6611, 7.8906



74.4459, 12.6666, -3.7232



44.5153, -1.0539, 3.8082

0.0000, NaN, NaN



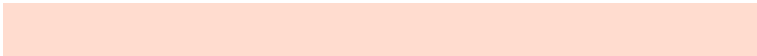
46.2646, -2.4686, 2.5136

Same Dimension

The Same Dimension uses a secret algorithm to generate beautiful new colors.



76.5227, 3.0782, 11.2132



87.7136, 5.3242, 14.4342



81.8330, -5.9332, 16.6633



37.8384, -0.0989, 4.0303



33.7818, 41.2079, 21.5376



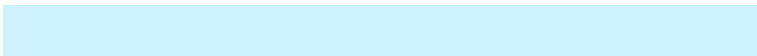
9.6914, 8.6451, 6.1231

Inverse Universe

The Inverse Universe completely reimagines the original color for something new.



79.2456, -10.3381, -3.0553



91.4599, -13.1507, -5.2037



73.8077, -1.4302, -10.0596



38.5936, -3.8150, 0.0748



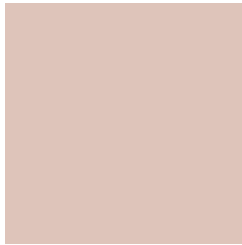
42.8084, -10.5838, -30.6594



11.9096, -3.7037, -6.8908

Previews

White Background



This preview shows how the HunterLab color 76.5210, 3.0805, 11.2120 looks on a white background.

Color Contrast Check

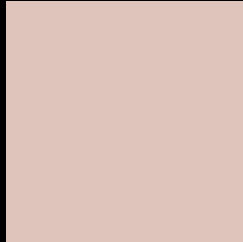
Large Text (above 18pt) WCAG AA × Fail

Any Text WCAG AA × Fail

Large Text (above 18pt) WCAG AAA × Fail

Any Text WCAG AAA × Fail

Black Background



This preview shows how the HunterLab color 76.5210, 3.0805, 11.2120 looks on a black background.

Color Contrast Check

Large Text (above 18pt) WCAG AA ✓ Pass

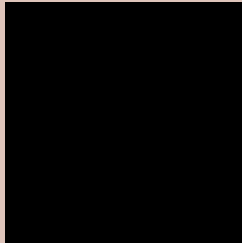
Any Text WCAG AA ✓ Pass

Large Text (above 18pt) WCAG AAA ✓ Pass

Any Text WCAG AAA ✓ Pass

If you want to check with other color combinations, try the [Color Contrast Checker](#).

HunterLab 76.5210, 3.0805, 11.2120 Background



This preview shows how black text looks on a background with the HunterLab color 76.5210, 3.0805, 11.2120.



This preview shows how white text looks on a background with the HunterLab color 76.5210, 3.0805,

Color Blindness Simulation

Color vision deficiency is a very complex topic, and I could not describe the different causes any better than Wikipedia does, so if you want to learn more, you should check out their [article about color blindness](#).

Dichromacy



Original Color

76.5210, 3.0805, 11.2120

Protanopia

76.6903, -3.9211, 10.4054

Deuteranopia

76.3528, 5.5274, 11.0719



Tritanopia

76.6169, 9.2164, 1.1932

Trichromacy



Original Color

76.5210, 3.0805, 11.2120

Protanomaly

76.5381, -1.3959, 10.7190

Deuteranomaly

76.5395, 4.6529, 11.2596

Tritanomaly

76.5513, 7.0084, 4.9711

Monochromacy



Original Color

76.5210, 3.0805, 11.2120

Achromatopsia

77.2788, -4.1234, 4.1987

Achromatomaly

76.8384, -1.3313, 6.5647

CSS Examples

Text

The CSS property to change the color of the text to HunterLab 76.5210, 3.0805, 11.2120 is called "color". The color property can be set on classes, ids or directly on the HTML element.

This example shows how text in the color `rgb(222, 196, 186)` looks like.

```
.text, #text, p{  
  color:rgb(222, 196, 186)  
}
```

If you want to add a text shadow in that color use the text-shadow property, you can generate a text shadow directly with our [CSS Text Shadow Generator](#).

Here you see how black text with a 4 pixel rgb(222, 196, 186) colored shadow looks like.

```
.shadow{ text-shadow: 4px 4px 2px rgb(222, 196, 186) }
```

Border

The CSS property to change the border of an element to HunterLab 76.5210, 3.0805, 11.2120 is called "border". The border property can be set on classes, ids or directly on the HTML element.

This example shows the color as border, it can be applied via the CSS property "border" or "border-color".

```
.border, #border, table{ border:4px solid rgb(222, 196, 186) }
```


If only the border color should be changed use the property `border-color`.

```
.border{ border-color:rgb(222, 196, 186) }
```

If you want to add a box shadow in that color use:

Here you see how a box with a 4 pixel `rgb(222, 196, 186)` colored shadow looks like.

```
.boxshadow{ -moz-box-shadow:4px 4px 4px  
4px rgb(222, 196, 186); -webkit-box-  
shadow:4px 4px 4px 4px rgb(222, 196, 186);  
box-shadow:4px 4px 4px 4px rgb(222, 196,  
186) }
```

Background

The CSS property to change the background color of an element to HunterLab 76.5210, 3.0805, 11.2120 is called "background". The background property can be set on classes, ids or directly on the HTML element.

```
.background, #background, body{  
background: rgb(222, 196, 186) }
```

If only the background color should be changed can be used:

```
.background{ background-color: rgb(222,  
196, 186) }
```

This example shows the color as background, it is applied via the CSS property "background".

To optimize and compress your CSS code, you can use our [online CSS compressor and optimizer](#) based on csstidy. If you want to create a linear or radial gradient as background or border, check our [CSS Gradient Generator](#).

Hey! You found this booklet interesting? Support Converting Colors with the new Membership Option!

The pro membership hides all ads, plus gives you double the colors in the color bucket, and more awesome pro features!

[Learn more, Memberships starting at \\$2.50/m!](#)

**Follow me
on Twitter!**

@ConvertingColor