

Converting Colors

HunterLab(76.7008, 3.9307,
17.1107)

Have a look what the booklet for
HunterLab(76.7008, 3.9307,
17.1107) contains.

HunterLab(76.5942, 4.0973, 17.0567)	3
<i>Conversions</i>	4
<i>Details</i>	6
<i>Harmonies</i>	12
<i>Previews</i>	24
<i>Color Blindness Simulation</i>	28
<i>CSS Examples</i>	31

Color

**HunterLab(76.5942, 4.0973,
17.0567)**

Conversions

Conversions Part 1

Format	Color
Hex	E5C3AC
RGB	229, 195, 172
RGB Percent	90%, 76%, 67%
CMY	0.1020, 0.2353, 0.3255
CMYK	0.00, 0.15, 0.25, 0.10
HSL	24°, 52%, 79%
HSV	24°, 25%, 90%
XYZ	59.2745, 58.6667, 47.2293
YIQ	202.5440, 27.6470, 0.0550

Conversions

Conversions Part 2

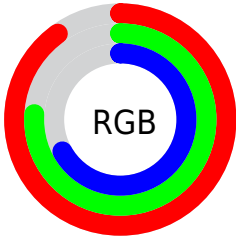
Format	Color
R _Y B	229, 211, 172
Decimal	15057836
CIE Lab	81.11, 8.61, 16.03
CIE LCh	81, 18.199, 61.762
Yxy	58.6694, 0.3589, 0.3552
Android (android.graphics.Color)	4293247916 (0xFFE5C3AC)
YUV	202.5440, -15.0582, 23.2019
Hunter-Lab	76.5942, 4.0973, 17.0567

Details

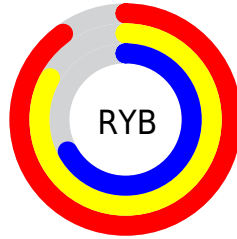
The HunterLab color $76.5942, 4.0973, 17.0567$ is a light color, and the websafe version is hex `FFCCCC`. A complement of this color would be $76.5302, -9.7809, -10.4434$, and the grayscale version is $77.1394, -4.1160, 4.1911$.

A 20% lighter version of the original color is $98.1972, -8.3992, 16.4827$, and $54.1203, 4.7259, 13.9647$ is the 20% darker color. If you saturate the color by 10%, you get $72.1253, 8.2666, 21.1794$, and if you desaturate by 10%, it is $81.2586, 0.2974, 12.4476$.

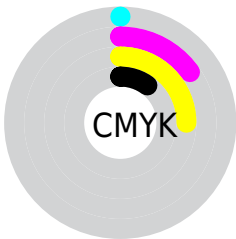
Distribution



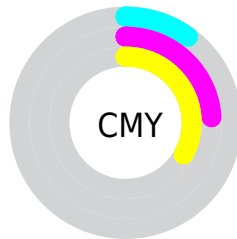
- Red (90%)
- Green (76%)
- Blue (67%)



- Red (90%)
- Yellow (83%)
- Blue (67%)



- Cyan (0%)
- Magenta (15%)
- Yellow (25%)
- Black (10%)



- Cyan (10%)
- Magenta (24%)
- Yellow (33%)

Brightness & Saturation Gradients

These gradients show how the HunterLab color 76.5942, 4.0973, 17.0567 changes by changing the brightness by 10 percent. The first figure shows a shift by +10% for each color and the second figure -10%.

Similar to the brightness gradients but the following saturation gradients show a change of the HunterLab color 76.5942, 4.0973, 17.0567 by changing the saturation by 10% instead.


 76.5942, 4.0973,
17.0567

 76.5942, 4.0973,
17.0567

204.8599, 0.3095,
29.9056

 65.0746, 4.2954,
15.6111

 101.4382, 3.5400,
19.9154

 54.1970, 4.4383,
14.1432


114.7044, 3.1937,
21.3358

 44.0037, 4.5169,
12.6435


128.5034, 2.8053,
22.7552

 34.5443, 4.5227,
11.0965

142.8151, 2.3774,
24.1759

 25.8807, 4.4436,
9.4783

157.6220, 1.9121,
25.6000

 18.0943, 4.2628,
7.7496

172.9079, 1.4113,

 11.2979, 3.9537,

27.0288

6.7633

188.6583, 0.8766,
28.4637

■ 3.5047, 10.5183,
2.4533

0.0000, NaN, NaN

■ 76.5942, 4.0973,
17.0567

■ 76.5942, 4.0973,
17.0567

■ 72.1253, 8.2666,
21.1794

■ 81.2586, 0.2974,
12.4476

■ 67.8679, 12.8354,
24.7412

■ 86.0947, -3.1531,
7.4111

■ 63.8477, 17.8130,
27.6648

■ 91.0878, -6.2862,
2.0018

■ 60.0907, 23.1937,
29.8685

■ 95.9290, -10.7613,
0.4492

■ 56.6252, 28.9435,
31.2769

■ 97.6719, -13.5317,
2.5182

■ 53.4794, 34.9886,
31.8376

■ 50.6791, 41.2006,
31.5537

■ 49.3819, 44.3502,
31.2053

Harmonies

Analogous

The Analogous color harmony consists of three colors that are next to each other on the color wheel.



76.5959, 10.8600, 12.1807



76.5942, 4.0973, 17.0567



76.5959, -4.6116, 18.5984

Triad

The Triadic color harmony groups three colors that are evenly spaced from another and form a triangle on the color wheel.



76.5959, 4.0947, 17.0578



76.5959, -20.3077, 3.6718



76.5959, 5.0372, -10.8462

Complementary

The Complementary color scheme is a pair of colors which are on the opposite of each other on the color wheel.



76.5942, 4.0973, 17.0567



76.5302, -9.7809, -10.4434

Split Complementary

Split-complementary colors differ from the complementary color scheme. The scheme consists of three colors, the original color and two neighbors of the complement color.



76.5959, -3.5691, -13.7617



76.5942, 4.0973, 17.0567



76.5959, -17.9766, -4.8134

Square

The Square scheme is like the rectangle color scheme, but the four colors are evenly spaced on the color wheel.



76.5959, 4.0947, 17.0578



76.5959, -18.4594, 11.4126



76.5959, -11.9469, -11.4398



76.5959, 11.4213, -3.8586

Rectangle

The Rectangle color scheme consists of four colors that form a rectangle on the color wheel.



76.5942, 4.0973, 17.0567



76.5959, -10.2747, 17.6836



76.5959, -11.9469, -11.4398



76.5959, 2.2952, -12.3684

Sweetspot

The Sweet Spot groups the original color and five complimentary colors.



76.5959, 4.0947, 17.0578



96.0718, -2.7550, 9.6339



71.1545, 21.5594, -4.5401



44.2924, -1.1678, 4.6201

0.0000, NaN, NaN



46.2646, -2.4686, 2.5136

Same Dimension

The Same Dimension uses a secret algorithm to generate beautiful new colors.



76.5959, 4.0947, 17.0578



83.8329, 7.0632, 21.8060



85.1896, -10.3131, 25.1487



39.1383, -0.7554, 4.5549



37.6354, 32.7663, 23.7644



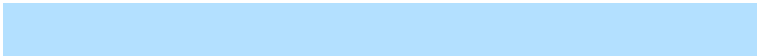
11.0677, 6.8525, 6.9398

Inverse Universe

The Inverse Universe completely reimagines the original color for something new.



76.5302, -9.7809, -10.4434



83.7394, -11.7955, -15.5917



67.9338, 4.6570, -22.7549



39.1273, -3.2629, -0.4108



36.9289, -0.3981, -45.2985



10.9032, -1.5235, -10.3393

Previews

White Background



This preview shows how the HunterLab color 76.5942, 4.0973, 17.0567 looks on a white background.

Color Contrast Check

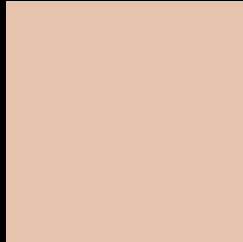
Large Text (above 18pt) WCAG AA × Fail

Any Text WCAG AA × Fail

Large Text (above 18pt) WCAG AAA × Fail

Any Text WCAG AAA × Fail

Black Background



This preview shows how the HunterLab color 76.5942, 4.0973, 17.0567 looks on a black background.

Color Contrast Check

Large Text (above 18pt) WCAG AA ✓ Pass

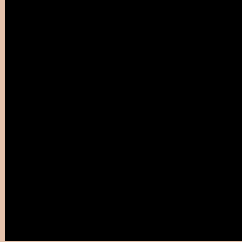
Any Text WCAG AA ✓ Pass

Large Text (above 18pt) WCAG AAA ✓ Pass

Any Text WCAG AAA ✓ Pass

If you want to check with other color combinations, try the [Color Contrast Checker](#).

HunterLab 76.5942, 4.0973, 17.0567 Background



This preview shows how black text looks on a background with the HunterLab color 76.5942, 4.0973, 17.0567.



This preview shows how white text looks on a background with the HunterLab color 76.5942, 4.0973,

Color Blindness Simulation

Color vision deficiency is a very complex topic, and I could not describe the different causes any better than Wikipedia does, so if you want to learn more, you should check out their [article about color blindness](#).

Dichromacy



Original Color

76.5942, 4.0973, 17.0567

Protanopia

76.6272, -4.8395, 15.7515

Deuteranopia

76.6276, 5.7078, 17.1186



Tritanopia

76.5234, 13.1258, 2.6328

Trichromacy



Original Color

76.5942, 4.0973, 17.0567

Protanomaly

76.6865, -1.5789, 16.2660

Deuteranomaly

76.5187, 5.3425, 17.0020

Tritanomaly

76.6194, 9.7841, 8.3427

Monochromacy



Original Color

76.5942, 4.0973, 17.0567

Achromatopsia

77.2788, -4.1234, 4.1987

Achromatomaly

76.8839, -1.4679, 8.8926

CSS Examples

Text

The CSS property to change the color of the text to HunterLab 76.5942, 4.0973, 17.0567 is called "color". The color property can be set on classes, ids or directly on the HTML element.

This example shows how text in the color `rgb(229, 195, 172)` looks like.

```
.text, #text, p{  
    color:rgb(229, 195, 172)  
}
```

If you want to add a text shadow in that color use the text-shadow property, you can generate a text shadow directly with our [CSS Text Shadow Generator](#).

Here you see how black text with a 4 pixel rgb(229, 195, 172) colored shadow looks like.

```
.shadow{ text-shadow: 4px 4px 2px rgb(229, 195, 172) }
```

Border

The CSS property to change the border of an element to HunterLab 76.5942, 4.0973, 17.0567 is called "border". The border property can be set on classes, ids or directly on the HTML element.

This example shows the color as border, it can be applied via the CSS property "border" or "border-color".

```
.border, #border, table{ border:4px solid rgb(229, 195, 172) }
```


If only the border color should be changed use the property `border-color`.

```
.border{ border-color:rgb(229, 195, 172) }
```

If you want to add a box shadow in that color use:

Here you see how a box with a 4 pixel `rgb(229, 195, 172)` colored shadow looks like.

```
.boxshadow{ -moz-box-shadow:4px 4px 4px 4px rgb(229, 195, 172); -webkit-box-shadow:4px 4px 4px 4px rgb(229, 195, 172); box-shadow:4px 4px 4px 4px rgb(229, 195, 172) }
```

Background

The CSS property to change the background color of an element to HunterLab 76.5942, 4.0973, 17.0567 is called "background". The background property can be set on classes, ids or directly on the HTML element.

```
.background, #background, body{  
background: rgb(229, 195, 172) }
```

If only the background color should be changed can be used:

```
.background{ background-color: rgb(229,  
195, 172) }
```

This example shows the color as background, it is applied via the CSS property "background".

To optimize and compress your CSS code, you can use our [online CSS compressor and optimizer](#) based on csstidy. If you want to create a linear or radial gradient as background or border, check our [CSS Gradient Generator](#).

Hey! You found this booklet interesting? Support Converting Colors with the new Membership Option!

The pro membership hides all ads, plus gives you double the colors in the color bucket, and more awesome pro features!

[Learn more, Memberships starting at \\$2.50/m!](#)

**Follow me
on Twitter!**

@ConvertingColor