

Converting Colors

HunterLab(76.7011, 0.9961,
8.9327)

Have a look what the booklet for
HunterLab(76.7011, 0.9961, 8.9327)
contains.

HunterLab(76.6765, 0.9017, 8.7022)	3
<i>Conversions</i>	4
<i>Details</i>	6
<i>Harmonies</i>	12
<i>Previews</i>	24
<i>Color Blindness Simulation</i>	28
<i>CSS Examples</i>	31

Color

**HunterLab(76.6765, 0.9017,
8.7022)**

Conversions

Conversions Part 1

Format	Color
Hex	D8C6C0
RGB	216, 198, 192
RGB Percent	85%, 78%, 75%
CMY	0.1529, 0.2235, 0.2471
CMYK	0.00, 0.08, 0.11, 0.15
HSL	15°, 24%, 80%
HSV	15°, 11%, 85%
XYZ	58.0274, 58.7929, 58.1590
YIQ	202.6980, 12.6540, 1.9500

Conversions

Conversions Part 2

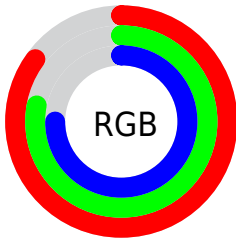
Format	Color
R _Y B	216, 200, 192
Decimal	14206656
CIE Lab	81.18, 5.29, 5.27
CIE LCh	81, 7.473, 44.897
Yxy	58.7955, 0.3316, 0.3360
Android (android.graphics.Color)	4292396736 (0xFFD8C6C0)
YUV	202.6980, -5.2741, 11.6659
Hunter-Lab	76.6765, 0.9017, 8.7022

Details

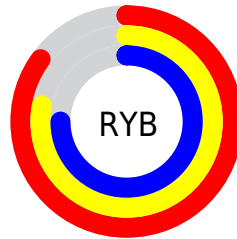
The HunterLab color $76.6765, 0.9017, 8.7022$ is a light color, and the websafe version is hex `CCCCCC`. A complement of this color would be $78.9027, -8.7241, -0.3510$, and the grayscale version is $77.1692, -4.1176, 4.1928$.

A 20% lighter version of the original color is $99.7784, -6.5511, 8.5977$, and $54.2104, 1.7121, 6.7193$ is the 20% darker color. If you saturate the color by 10%, you get $71.3401, 6.0187, 12.2926$, and if you desaturate by 10%, it is $82.2369, -3.9058, 4.9311$.

Distribution



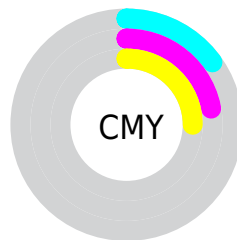
- Red (85%)
- Green (78%)
- Blue (75%)



- Red (85%)
- Yellow (78%)
- Blue (75%)



- Cyan (0%)
- Magenta (8%)
- Yellow (11%)
- Black (15%)



- Cyan (15%)
- Magenta (22%)
- Yellow (25%)

Brightness & Saturation Gradients

These gradients show how the HunterLab color 76.6765, 0.9017, 8.7022 changes by changing the brightness by 10 percent. The first figure shows a shift by +10% for each color and the second figure -10%.

Similar to the brightness gradients but the following saturation gradients show a change of the HunterLab color 76.6765, 0.9017, 8.7022 by changing the saturation by 10% instead.

■ 76.6765, 0.9017,
8.7022

■ 76.6765, 0.9017,
8.7022

204.9740, -4.0574,
17.5404

■ 65.1525, 1.2580,
7.8210

■ 101.5285, 0.0505,
10.5275

■ 54.2703, 1.5673,
6.9576

114.7985, -0.4342,
11.4696

■ 44.0721, 1.8225,
6.1118

128.6011, -0.9558,
12.4319

■ 34.6073, 2.0169,
5.2815

142.9164, -1.5124,
13.4142

■ 25.9380, 2.1416,
4.4628

157.7266, -2.1023,
14.4164

■ 18.1451, 2.1836,
3.6480

173.0158, -2.7239,

■ 11.3413, 2.1224,

15.4383

2.8220

188.7694, -3.3760,
16.4797

■ 3.6128, 6.1920,
2.5290

0.0000, NaN, NaN

■ 76.6765, 0.9017,
8.7022

■ 76.6765, 0.9017,
8.7022

■ 71.3401, 6.0187,
12.2926

■ 82.2369, -3.9058,
4.9311

■ 66.2528, 11.4783,
15.6544

■ 87.9912, -8.4286,
1.0090

■ 61.4518, 17.2934,
18.7303

■ 93.8579, -13.0456,
-2.1573

■ 56.9794, 23.4565,
21.4454

■ 96.6121, -17.3299,
1.1686

■ 52.8838, 29.9212,
23.7068

■ 49.2188, 36.5807,
25.4091

■ 46.0397, 43.2464,
26.4484

■ 43.3977, 49.6352,
26.7563

■ 41.5219, 54.7569,
26.5442

Harmonies

Analogous

The Analogous color harmony consists of three colors that are next to each other on the color wheel.



76.6782, 2.7502, 5.8572



76.6765, 0.9017, 8.7022



76.6782, -2.2728, 10.2973

Triad

The Triadic color harmony groups three colors that are evenly spaced from another and form a triangle on the color wheel.



76.6782, 0.8995, 8.7034



76.6782, -10.7028, 5.8796



76.6782, -2.2972, -2.5071

Complementary

The Complementary color scheme is a pair of colors which are on the opposite of each other on the color wheel.



76.6765, 0.9017, 8.7022



78.9027, -8.7241, -0.3510

Split Complementary

Split-complementary colors differ from the complementary color scheme. The scheme consists of three colors, the original color and two neighbors of the complement color.



76.6782, -5.9013, -2.5005



76.6765, 0.9017, 8.7022



76.6782, -10.7091, 2.4513

Square

The Square scheme is like the rectangle color scheme, but the four colors are evenly spaced on the color wheel.



76.6782, 0.8995, 8.7034



76.6782, -8.9486, 8.7192



76.6782, -8.9658, -0.6502



76.6782, 0.8814, -0.6681

Rectangle

The Rectangle color scheme consists of four colors that form a rectangle on the color wheel.



76.6765, 0.9017, 8.7022



76.6782, -4.6890, 10.4844



76.6782, -8.9658, -0.6502



76.6782, -3.5001, -2.7233

Sweetspot

The Sweet Spot groups the original color and five complimentary colors.



76.6782, 0.8995, 8.7034



97.9344, -3.6291, 6.8386



75.4667, 7.0169, -1.2784



45.0553, -1.4655, 3.3363

0.0000, NaN, NaN



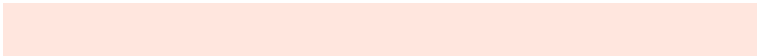
46.2646, -2.4686, 2.5136

Same Dimension

The Same Dimension uses a secret algorithm to generate beautiful new colors.



76.6782, 0.8995, 8.7034



91.2135, 2.2966, 11.3934



80.3110, -5.2305, 12.5789



35.9452, 0.0296, 3.7406



32.1715, 41.4427, 20.5494



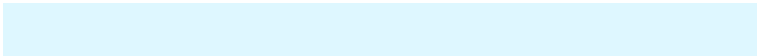
8.7005, 7.9347, 5.5001

Inverse Universe

The Inverse Universe completely reimagines the original color for something new.



78.9027, -8.7241, -0.3510



94.3761, -11.3907, -1.4809



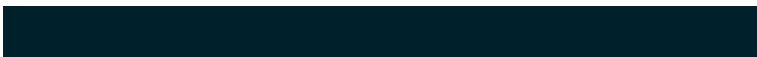
75.2020, -2.6506, -4.9274



36.8201, -3.7546, 0.1796



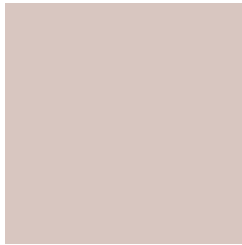
42.8970, -12.3620, -26.9315



11.1241, -3.8586, -5.5745

Previews

White Background



This preview shows how the HunterLab color 76.6765, 0.9017, 8.7022 looks on a white background.

Color Contrast Check

Large Text (above 18pt) WCAG AA × Fail

Any Text WCAG AA × Fail

Large Text (above 18pt) WCAG AAA × Fail

Any Text WCAG AAA × Fail

Black Background



This preview shows how the HunterLab color 76.6765, 0.9017, 8.7022 looks on a black background.

Color Contrast Check

Large Text (above 18pt) WCAG AA ✓ Pass

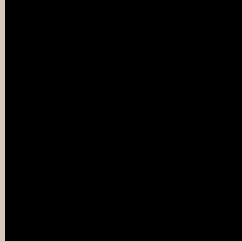
Any Text WCAG AA ✓ Pass

Large Text (above 18pt) WCAG AAA ✓ Pass

Any Text WCAG AAA ✓ Pass

If you want to check with other color combinations, try the [Color Contrast Checker](#).

HunterLab 76.6765, 0.9017, 8.7022 Background



This preview shows how black text looks on a background with the HunterLab color 76.6765, 0.9017, 8.7022.



This preview shows how white text looks on a background with the HunterLab color 76.6765, 0.9017,

Color Blindness Simulation

Color vision deficiency is a very complex topic, and I could not describe the different causes any better than Wikipedia does, so if you want to learn more, you should check out their [article about color blindness](#).

Dichromacy



Original Color

76.6765, 0.9017, 8.7022

Protanopia

76.7683, -3.3059, 7.8278

Deuteranopia

76.7385, 5.7192, 8.4056



Tritanopia

76.6443, 6.4507, 0.1738

Trichromacy



Original Color

76.6765, 0.9017, 8.7022

Protanomaly

76.7206, -1.9731, 8.2507

Deuteranomaly

76.7201, 4.1511, 8.3574

Tritanomaly

76.6140, 4.3958, 3.5620

Monochromacy



Original Color

76.6765, 0.9017, 8.7022

Achromatopsia

77.2788, -4.1234, 4.1987

Achromatomaly

77.0108, -2.1694, 5.8163

CSS Examples

Text

The CSS property to change the color of the text to HunterLab 76.6765, 0.9017, 8.7022 is called "color". The color property can be set on classes, ids or directly on the HTML element.

This example shows how text in the color `rgb(216, 198, 192)` looks like.

```
.text, #text, p{  
    color:rgb(216, 198, 192)  
}
```

If you want to add a text shadow in that color use the text-shadow property, you can generate a text shadow directly with our [CSS Text Shadow Generator](#).

Here you see how black text with a 4 pixel rgb(216, 198, 192) colored shadow looks like.

```
.shadow{ text-shadow: 4px 4px 2px rgb(216, 198, 192) }
```

Border

The CSS property to change the border of an element to HunterLab 76.6765, 0.9017, 8.7022 is called "border". The border property can be set on classes, ids or directly on the HTML element.

This example shows the color as border, it can be applied via the CSS property "border" or "border-color".

```
.border, #border, table{ border:4px solid rgb(216, 198, 192) }
```


If only the border color should be changed use the property `border-color`.

```
.border{ border-color:rgb(216, 198, 192) }
```

If you want to add a box shadow in that color use:

Here you see how a box with a 4 pixel `rgb(216, 198, 192)` colored shadow looks like.

```
.boxshadow{ -moz-box-shadow:4px 4px 4px  
4px rgb(216, 198, 192); -webkit-box-  
shadow:4px 4px 4px 4px rgb(216, 198, 192);  
box-shadow:4px 4px 4px 4px rgb(216, 198,  
192) }
```

Background

The CSS property to change the background color of an element to HunterLab 76.6765, 0.9017, 8.7022 is called "background". The background property can be set on classes, ids or directly on the HTML element.

```
.background, #background, body{  
background: rgb(216, 198, 192) }
```

If only the background color should be changed can be used:

```
.background{ background-color: rgb(216,  
198, 192) }
```

This example shows the color as background, it is applied via the CSS property "background".

To optimize and compress your CSS code, you can use our [online CSS compressor and optimizer](#) based on csstidy. If you want to create a linear or radial gradient as background or border, check our [CSS Gradient Generator](#).

Hey! You found this booklet interesting? Support Converting Colors with the new Membership Option!

The pro membership hides all ads, plus gives you double the colors in the color bucket, and more awesome pro features!

[Learn more, Memberships starting at \\$2.50/m!](#)

**Follow me
on Twitter!**

@ConvertingColor