

Converting Colors

HunterLab(76.7436, 5.2468,
7.7736)

Have a look what the booklet for
HunterLab(76.7436, 5.2468, 7.7736)
contains.

HunterLab(76.6633, 5.5253, 7.8637)	3
<i>Conversions</i>	4
<i>Details</i>	6
<i>Harmonies</i>	12
<i>Previews</i>	24
<i>Color Blindness Simulation</i>	28
<i>CSS Examples</i>	31

Color

**HunterLab(76.6633, 5.5253,
7.8637)**

Conversions

Conversions Part 1

Format	Color
Hex	E0C3C2
RGB	224, 195, 194
RGB Percent	88%, 76%, 76%
CMY	0.1216, 0.2353, 0.2392
CMYK	0.00, 0.13, 0.13, 0.12
HSL	2°, 33%, 82%
HSV	2°, 13%, 88%
XYZ	59.9933, 58.7726, 59.2212
YIQ	203.5570, 17.6050, 5.8370

Conversions

Conversions Part 2

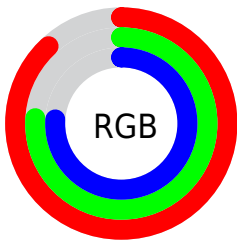
Format	Color
R _Y B	224, 195, 194
Decimal	14730178
CIE Lab	81.17, 10.08, 4.27
CIE LCh	81, 10.947, 22.979
Yxy	58.7752, 0.3371, 0.3302
Android (android.graphics.Color)	4292920258 (0xFFE0C3C2)
YUV	203.5570, -4.7116, 17.9285
Hunter-Lab	76.6633, 5.5253, 7.8637

Details

The HunterLab color **76.6633, 5.5253, 7.8637** is a light color, and the websafe version is hex **FFCCCC**. A complement of this color would be **83.4417, -13.1987, 1.0756**, and the grayscale version is **77.5326, -4.1369, 4.2125**.

A 20% lighter version of the original color is **98.8853, -4.6209, 6.6239**, and **54.2017, 5.9888, 6.3635** is the 20% darker color. If you saturate the color by 10%, you get **69.8815, 13.4970, 10.3528**, and if you desaturate by 10%, it is **83.8299, -2.0973, 5.4782**.

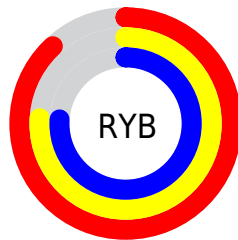
Distribution



Red (88%)

Green (76%)

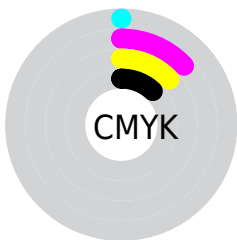
Blue (76%)



Red (88%)

Yellow (76%)

Blue (76%)

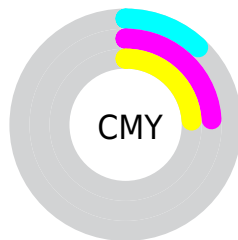


Cyan (0%)

Magenta (13%)

Yellow (13%)

Black (12%)



Cyan (12%)


Magenta (24%)

Yellow (24%)

Brightness & Saturation Gradients


These gradients show how the HunterLab color 76.6633, 5.5253, 7.8637 changes by changing the brightness by 10 percent. The first figure shows a shift by +10% for each color and the second figure -10%.


Similar to the brightness gradients but the following saturation gradients show a change of the HunterLab color 76.6633, 5.5253, 7.8637 by changing the saturation by 10% instead.


 76.6633, 5.5253,
7.8637

 76.6633, 5.5253,
7.8637


204.9557, 2.2488,
16.3438

 65.1400, 5.6552,
7.0322


 101.5140, 5.0963,
9.5976

 54.2585, 5.7261,
6.2216


114.7834, 4.8102,
10.4972

 44.0611, 5.7286,
5.4327


128.5854, 4.4799,
11.4187

 34.5972, 5.6532,
4.6643

142.9001, 4.1082,
12.3618

 25.9288, 5.4870,
3.9141

157.7098, 3.6973,
13.3262

 18.1370, 5.2118,
3.1771

172.9985, 3.2493,

 11.3344, 4.7993,

14.3115

2.4426

188.7516, 2.7660,
15.3175

■ 3.5957, 12.0218,
2.5170

0.0000, NaN, NaN

■ 76.6633, 5.5253,
7.8637

■ 76.6633, 5.5253,
7.8637

■ 69.8815, 13.4970,
10.3528

■ 83.8299, -2.0973,
5.4782

■ 63.5488, 21.8230,
12.9337

■ 91.3210, -9.3917,
3.1884

■ 57.7532, 30.4381,
15.5768

■ 97.2561, -15.0170,
1.9903

■ 52.5981, 39.1695,
18.2128

■ 48.2009, 47.6772,
20.7164

■ 44.6788, 55.4195,
22.9012

■ 42.1226, 61.7128,
24.5492

■ 40.5557, 65.9479,
25.4949

■ 40.0128, 67.4777,
25.8370

Harmonies

Analogous

The Analogous color harmony consists of three colors that are next to each other on the color wheel.



76.6650, 6.2929, 2.9776



76.6633, 5.5253, 7.8637



76.6650, 2.1435, 11.5224

Triad

The Triadic color harmony groups three colors that are evenly spaced from another and form a triangle on the color wheel.



76.6650, 5.5230, 7.8650



76.6650, -12.0692, 9.7881



76.6650, -5.3375, -6.0945

Complementary

The Complementary color scheme is a pair of colors which are on the opposite of each other on the color wheel.



76.6633, 5.5253, 7.8637



83.4417, -13.1987, 1.0756

Split Complementary

Split-complementary colors differ from the complementary color scheme. The scheme consists of three colors, the original color and two neighbors of the complement color.



76.6650, -10.1397, -3.9845



76.6633, 5.5253, 7.8637



76.6650, -13.9572, 5.3496

Square

The Square scheme is like the rectangle color scheme, but the four colors are evenly spaced on the color wheel.



76.6650, 5.5230, 7.8650



76.6650, -8.0360, 12.5789



76.6650, -13.2606, 0.2880



76.6650, -0.0723, -5.3075

Rectangle

The Rectangle color scheme consists of four colors that form a rectangle on the color wheel.



76.6633, 5.5253, 7.8637



76.6650, -1.0863, 12.8828



76.6650, -13.2606, 0.2880



76.6650, -7.0576, -5.6960

Sweetspot

The Sweet Spot groups the original color and five complimentary colors.



76.6650, 5.5230, 7.8650



96.5561, -1.8794, 6.5175



77.3042, 11.0018, -5.7172



44.3748, -0.5656, 3.1106

0.0000, NaN, NaN



46.2646, -2.4686, 2.5136

Same Dimension

The Same Dimension uses a secret algorithm to generate beautiful new colors.



76.6650, 5.5230, 7.8650



86.6110, 8.8704, 9.8826



81.1396, -2.2439, 12.6630



37.1128, 1.1556, 3.2282



30.5812, 51.2969, 19.7421



8.2133, 12.9640, 5.2879

Inverse Universe

The Inverse Universe completely reimagines the original color for something new.



83.4417, -13.1987, 1.0756



96.0198, -17.1481, 0.4487



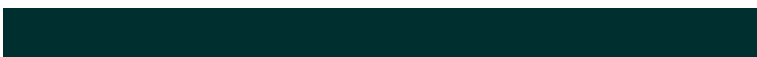
78.7171, -5.6450, -4.7110



39.3567, -5.0370, 0.9820



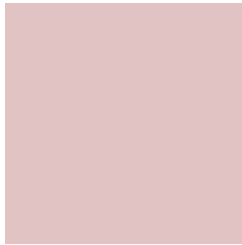
56.4845, -28.6363, -8.7831



14.9548, -7.6404, -2.1989

Previews

White Background



This preview shows how the HunterLab color 76.6633, 5.5253, 7.8637 looks on a white background.

Color Contrast Check

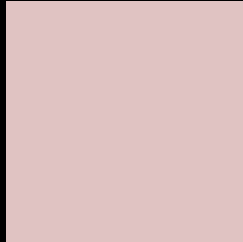
Large Text (above 18pt) WCAG AA × Fail

Any Text WCAG AA × Fail

Large Text (above 18pt) WCAG AAA × Fail

Any Text WCAG AAA × Fail

Black Background



This preview shows how the HunterLab color 76.6633, 5.5253, 7.8637 looks on a black background.

Color Contrast Check

Large Text (above 18pt) WCAG AA ✓ Pass

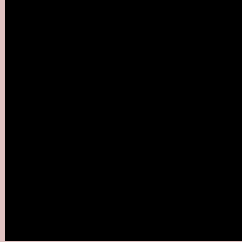
Any Text WCAG AA ✓ Pass

Large Text (above 18pt) WCAG AAA ✓ Pass

Any Text WCAG AAA ✓ Pass

If you want to check with other color combinations, try the [Color Contrast Checker](#).

HunterLab 76.6633, 5.5253, 7.8637 Background



This preview shows how black text looks on a background with the HunterLab color 76.6633, 5.5253, 7.8637.



This preview shows how white text looks on a background with the HunterLab color 76.6633, 5.5253,

7.8637.

Color Blindness Simulation

Color vision deficiency is a very complex topic, and I could not describe the different causes any better than Wikipedia does, so if you want to learn more, you should check out their [article about color blindness](#).

Dichromacy



Original Color

76.6633, 5.5253, 7.8637

Protanopia

76.7635, -3.1453, 6.4470

Deuteranopia

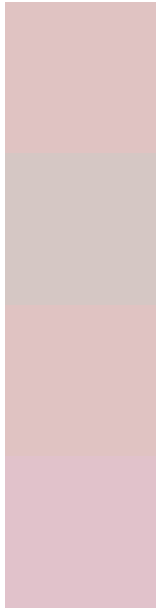
76.6633, 5.5253, 7.8637



Tritanopia

76.7221, 9.5636, 1.3274

Trichromacy



Original Color

76.6633, 5.5253, 7.8637

Protanomaly

76.7975, 0.0133, 7.0035

Deuteranomaly

76.6633, 5.5253, 7.8637

Tritanomaly

76.7482, 7.8487, 3.7817

Monochromacy



Original Color

76.6633, 5.5253, 7.8637

Achromatopsia

77.7063, -4.1462, 4.2219

Achromatomaly

77.3255, -1.0249, 5.7312

CSS Examples

Text

The CSS property to change the color of the text to HunterLab 76.6633, 5.5253, 7.8637 is called "color". The color property can be set on classes, ids or directly on the HTML element.

This example shows how text in the color `rgb(224, 195, 194)` looks like.

```
.text, #text, p{  
    color:rgb(224, 195, 194)  
}
```

If you want to add a text shadow in that color use the text-shadow property, you can generate a text shadow directly with our [CSS Text Shadow Generator](#).

Here you see how black text with a 4 pixel rgb(224, 195, 194) colored shadow looks like.

```
.shadow{ text-shadow: 4px 4px 2px rgb(224, 195, 194) }
```

Border

The CSS property to change the border of an element to HunterLab 76.6633, 5.5253, 7.8637 is called "border".

The border property can be set on classes, ids or directly on the HTML element.

This example shows the color as border, it can be applied via the CSS property "border" or "border-color".

```
.border, #border, table{ border:4px solid rgb(224, 195, 194) }
```


If only the border color should be changed use the property `border-color`.

```
.border{ border-color:rgb(224, 195, 194) }
```

If you want to add a box shadow in that color use:

Here you see how a box with a 4 pixel `rgb(224, 195, 194)` colored shadow looks like.

```
.boxshadow{ -moz-box-shadow:4px 4px 4px  
4px rgb(224, 195, 194); -webkit-box-  
shadow:4px 4px 4px 4px rgb(224, 195, 194);  
box-shadow:4px 4px 4px 4px rgb(224, 195,  
194) }
```

Background

The CSS property to change the background color of an element to HunterLab 76.6633, 5.5253, 7.8637 is called "background". The background property can be set on classes, ids or directly on the HTML element.

```
.background, #background, body{  
background: rgb(224, 195, 194) }
```

If only the background color should be changed can be used:

```
.background{ background-color: rgb(224,  
195, 194) }
```

This example shows the color as background, it is applied via the CSS property "background".

To optimize and compress your CSS code, you can use our [online CSS compressor and optimizer](#) based on csstidy. If you want to create a linear or radial gradient as background or border, check our [CSS Gradient Generator](#).

Hey! You found this booklet interesting? Support Converting Colors with the new Membership Option!

The pro membership hides all ads, plus gives you double the colors in the color bucket, and more awesome pro features!

[Learn more, Memberships starting at \\$2.50/m!](#)

**Follow me
on Twitter!**

@ConvertingColor