

Converting Colors

HunterLab(76.7641, 4.6706,
6.4939)

Have a look what the booklet for
HunterLab(76.7641, 4.6706, 6.4939)
contains.

HunterLab(76.7354, 4.4386, 6.5475)	3
<i>Conversions</i>	4
<i>Details</i>	6
<i>Harmonies</i>	12
<i>Previews</i>	24
<i>Color Blindness Simulation</i>	28
<i>CSS Examples</i>	31

Color

**HunterLab(76.7354, 4.4386,
6.5475)**

Conversions

Conversions Part 1

Format	Color
Hex	DDC4C5
RGB	221, 196, 197
RGB Percent	87%, 77%, 77%
CMY	0.1333, 0.2314, 0.2274
CMYK	0.00, 0.11, 0.11, 0.13
HSL	358°, 27%, 82%
HSV	358°, 11%, 87%
XYZ	59.6368, 58.8832, 61.0457
YIQ	203.5890, 14.5790, 5.6110

Conversions

Conversions Part 2

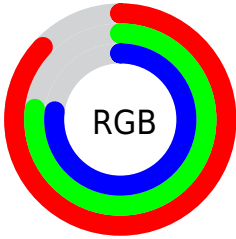
Format	Color
R _Y B	221, 196, 197
Decimal	14533829
CIE Lab	81.23, 8.96, 2.72
CIE LCh	81, 9.368, 16.873
Yxy	58.8858, 0.3321, 0.3279
Android (android.graphics.Color)	4292723909 (0xFFDDC4C5)
YUV	203.5890, -3.2484, 15.2694
Hunter-Lab	76.7354, 4.4386, 6.5475

Details

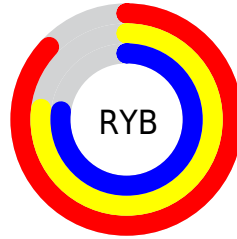
The HunterLab color $76.7354, 4.4386, 6.5475$ is a light color, and the websafe version is hex `CCCCCC`. A complement of this color would be $82.8356, -12.3475, 2.3605$, and the grayscale version is $77.5411, -4.1374, 4.2130$.

A 20% lighter version of the original color is $99.3309, -4.4512, 5.1610$, and $54.2551, 4.9279, 5.1198$ is the 20% darker color. If you saturate the color by 10%, you get $69.8096, 12.7171, 8.4501$, and if you desaturate by 10%, it is $84.0496, -3.5180, 4.8324$.

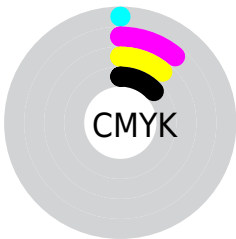
Distribution



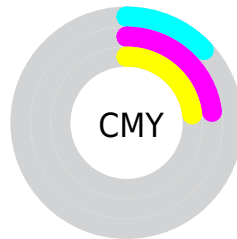
- Red (87%)
- Green (77%)
- Blue (77%)



- Red (87%)
- Yellow (77%)
- Blue (77%)



- Cyan (0%)
- Magenta (11%)
- Yellow (11%)
- Black (13%)



- Cyan (13%)
- Magenta (23%)
- Yellow (23%)

Brightness & Saturation Gradients

These gradients show how the HunterLab color 76.7354, 4.4386, 6.5475 changes by changing the brightness by 10 percent. The first figure shows a shift by +10% for each color and the second figure -10%.


Similar to the brightness gradients but the following saturation gradients show a change of the HunterLab color 76.7354, 4.4386, 6.5475 by changing the saturation by 10% instead.

 76.7354, 4.4386,
6.5475

 76.7354, 4.4386,
6.5475


205.0558, 0.7711,
14.4788

 65.2083, 4.6210,
5.7917


 101.5932, 3.9117,
8.1415

 54.3228, 4.7472,
5.0618


114.8659, 3.5794,
8.9760

 44.1211, 4.8081,
4.3595


128.6711, 3.2047,
9.8350

 34.6525, 4.7949,
3.6852

142.9888, 2.7900,
10.7180

 25.9791, 4.6957,
3.0387

157.8015, 2.3375,
11.6244

 18.1816, 4.4931,
2.4191

173.0930, 1.8491,

 11.3725, 4.1603,

12.5537

1.8223

188.8489, 1.3264,
13.5053

■ 3.6883, 10.3946,
2.5818

0.0000, NaN, NaN

■ 76.7354, 4.4386,
6.5475

■ 76.7354, 4.4386,
6.5475

■ 69.8096, 12.7171,
8.4501

■ 84.0496, -3.5180,
4.8324

■ 63.3383, 21.3185,
10.5537

■ 91.6906, -11.1711,
3.2782

■ 57.4127, 30.1707,
12.8611

■ 97.0115, -15.8936,
1.6789

■ 52.1410, 39.0877,
15.3413

■ 47.6474, 47.7052,
17.9062

■ 44.0574, 55.4441,
20.3909

■ 41.4688, 61.5809,
22.5605

■ 39.9065, 65.4980,
24.1740

■ 39.2321, 67.2354,
24.9695

Harmonies

Analogous

The Analogous color harmony consists of three colors that are next to each other on the color wheel.



76.7371, 4.5905, 2.2667



76.7354, 4.4386, 6.5475



76.7371, 1.9616, 9.9948

Triad

The Triadic color harmony groups three colors that are evenly spaced from another and form a triangle on the color wheel.



76.7371, 4.4364, 6.5488



76.7371, -10.3673, 9.6406



76.7371, -6.0714, -4.3596

Complementary

The Complementary color scheme is a pair of colors which are on the opposite of each other on the color wheel.



76.7354, 4.4386, 6.5475



82.8356, -12.3475, 2.3605

Split Complementary

Split-complementary colors differ from the complementary color scheme. The scheme consists of three colors, the original color and two neighbors of the complement color.



76.7371, -9.9764, -2.1352



76.7354, 4.4386, 6.5475



76.7371, -12.4175, 6.0394

Square

The Square scheme is like the rectangle color scheme, but the four colors are evenly spaced on the color wheel.



76.7371, 4.4364, 6.5488



76.7371, -6.6163, 11.7074



76.7371, -12.2761, 1.7270



76.7371, -1.5480, -4.2035

Rectangle

The Rectangle color scheme consists of four colors that form a rectangle on the color wheel.



76.7354, 4.4386, 6.5475



76.7371, -0.6392, 11.4291



76.7371, -12.2761, 1.7270



76.7371, -7.4978, -3.8602

Sweetspot

The Sweet Spot groups the original color and five complimentary colors.



76.7371, 4.4364, 6.5488



97.3405, -2.5602, 6.0146



77.3819, 8.1355, -4.5888



44.7081, -0.8387, 2.8559

0.0000, NaN, NaN



46.2646, -2.4686, 2.5136

Same Dimension

The Same Dimension uses a secret algorithm to generate beautiful new colors.



76.7371, 4.4364, 6.5488



87.9121, 7.9067, 8.3050



80.0666, -1.5424, 10.6346



36.1385, 1.3492, 2.8751



29.9083, 51.2695, 18.9335



7.6324, 13.1232, 4.5248

Inverse Universe

The Inverse Universe completely reimagines the original color for something new.



76.7371, 4.4364, 6.5488



87.9121, 7.9067, 8.3050



79.3273, -6.5055, -2.3610



36.1385, 1.3492, 2.8751



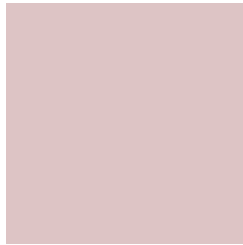
29.9083, 51.2695, 18.9335



7.6324, 13.1232, 4.5248

Previews

White Background



This preview shows how the HunterLab color 76.7354, 4.4386, 6.5475 looks on a white background.

Color Contrast Check

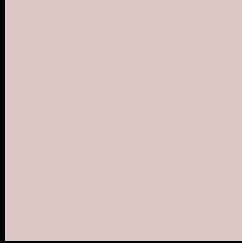
Large Text (above 18pt) WCAG AA × Fail

Any Text WCAG AA × Fail

Large Text (above 18pt) WCAG AAA × Fail

Any Text WCAG AAA × Fail

Black Background



This preview shows how the HunterLab color 76.7354, 4.4386, 6.5475 looks on a black background.

Color Contrast Check

Large Text (above 18pt) WCAG AA ✓ Pass

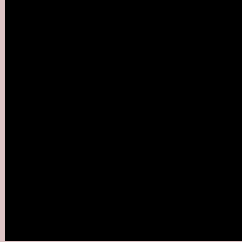
Any Text WCAG AA ✓ Pass

Large Text (above 18pt) WCAG AAA ✓ Pass

Any Text WCAG AAA ✓ Pass

If you want to check with other color combinations, try the [Color Contrast Checker](#).

HunterLab 76.7354, 4.4386, 6.5475 Background



This preview shows how black text looks on a background with the HunterLab color 76.7354, 4.4386, 6.5475.



This preview shows how white text looks on a background with the HunterLab color 76.7354, 4.4386,

6.5475.

Color Blindness Simulation

Color vision deficiency is a very complex topic, and I could not describe the different causes any better than Wikipedia does, so if you want to learn more, you should check out their [article about color blindness](#).

Dichromacy



Original Color

76.7354, 4.4386, 6.5475

Protanopia

76.8539, -2.6513, 5.1551

Deuteranopia

76.6482, 5.6523, 6.4685



Tritanopia

76.7300, 8.1684, 0.8126

Trichromacy



Original Color

76.7354, 4.4386, 6.5475

Protanomaly

76.6937, -0.1623, 5.4840

Deuteranomaly

76.5448, 5.3056, 6.3436

Tritanomaly

76.7904, 6.6188, 2.8390

Monochromacy



Original Color

76.7354, 4.4386, 6.5475

Achromatopsia

77.7063, -4.1462, 4.2219

Achromatomaly

77.2606, -1.1874, 5.1814

CSS Examples

Text

The CSS property to change the color of the text to HunterLab 76.7354, 4.4386, 6.5475 is called "color". The color property can be set on classes, ids or directly on the HTML element.

This example shows how text in the color `rgb(221, 196, 197)` looks like.

```
.text, #text, p{  
    color:rgb(221, 196, 197)  
}
```

If you want to add a text shadow in that color use the text-shadow property, you can generate a text shadow directly with our [CSS Text Shadow Generator](#).

Here you see how black text with a 4 pixel rgb(221, 196, 197) colored shadow looks like.

```
.shadow{ text-shadow: 4px 4px 2px rgb(221, 196, 197) }
```

Border

The CSS property to change the border of an element to HunterLab 76.7354, 4.4386, 6.5475 is called "border".

The border property can be set on classes, ids or directly on the HTML element.

This example shows the color as border, it can be applied via the CSS property "border" or "border-color".

```
.border, #border, table{ border:4px solid rgb(221, 196, 197) }
```


If only the border color should be changed use the property `border-color`.

```
.border{ border-color:rgb(221, 196, 197) }
```

If you want to add a box shadow in that color use:

Here you see how a box with a 4 pixel `rgb(221, 196, 197)` colored shadow looks like.

```
.boxshadow{ -moz-box-shadow:4px 4px 4px 4px rgb(221, 196, 197); -webkit-box-shadow:4px 4px 4px 4px rgb(221, 196, 197); box-shadow:4px 4px 4px 4px rgb(221, 196, 197) }
```

Background

The CSS property to change the background color of an element to HunterLab 76.7354, 4.4386, 6.5475 is called "background". The background property can be set on classes, ids or directly on the HTML element.

```
.background, #background, body{  
background: rgb(221, 196, 197) }
```

If only the background color should be changed can be used:

```
.background{ background-color: rgb(221,  
196, 197) }
```

This example shows the color as background, it is applied via the CSS property "background".

To optimize and compress your CSS code, you can use our [online CSS compressor and optimizer](#) based on csstidy. If you want to create a linear or radial gradient as background or border, check our [CSS Gradient Generator](#).

Hey! You found this booklet interesting? Support Converting Colors with the new Membership Option!

The pro membership hides all ads, plus gives you double the colors in the color bucket, and more awesome pro features!

[Learn more, Memberships starting at \\$2.50/m!](#)

**Follow me
on Twitter!**

@ConvertingColor