

Converting Colors

HunterLab(76.8381, 4.3684,
8.4933)

Have a look what the booklet for
HunterLab(76.8381, 4.3684, 8.4933)
contains.

HunterLab(76.8232, 4.4986, 8.4794)	3
<i>Conversions</i>	4
<i>Details</i>	6
<i>Harmonies</i>	12
<i>Previews</i>	24
<i>Color Blindness Simulation</i>	28
<i>CSS Examples</i>	31

Color

**HunterLab(76.8232, 4.4986,
8.4794)**

Conversions

Conversions Part 1

Format	Color
Hex	DFC4C1
RGB	223, 196, 193
RGB Percent	87%, 77%, 76%
CMY	0.1255, 0.2314, 0.2431
CMYK	0.00, 0.12, 0.13, 0.13
HSL	6°, 32%, 82%
HSV	6°, 13%, 87%
XYZ	59.7969, 59.0180, 58.6920
YIQ	203.7310, 17.0550, 4.7910

Conversions

Conversions Part 2

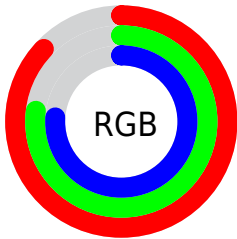
Format	Color
R_{YB}	223, 196, 193
Decimal	14664897
CIE Lab	81.30, 9.03, 4.99
CIE LCh	81, 10.318, 28.951
Yxy	59.0207, 0.3369, 0.3325
Android (android.graphics.Color)	4292854977 (0xFFDFC4C1)
YUV	203.7310, -5.2904, 16.8989
Hunter-Lab	76.8232, 4.4986, 8.4794

Details

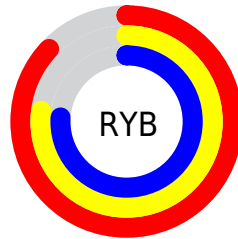
The HunterLab color **76.8232, 4.4986, 8.4794** is a light color, and the websafe version is hex **CCCCCC**. A complement of this color would be **82.3712, -12.1685, 0.2932**, and the grayscale version is **77.6095, -4.1410, 4.2167**.

A 20% lighter version of the original color is **99.1716, -5.3233, 7.4348**, and **54.3730, 5.1557, 6.5401** is the 20% darker color. If you saturate the color by 10%, you get **70.4581, 11.6463, 11.3243**, and if you desaturate by 10%, it is **83.5217, -2.3088, 5.6431**.

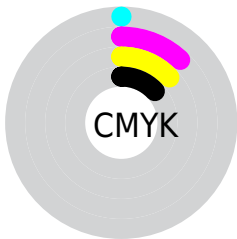
Distribution



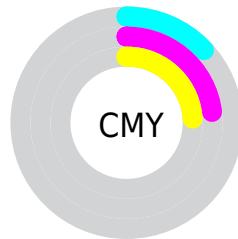
- Red (87%)
- Green (77%)
- Blue (76%)



- Red (87%)
- Yellow (77%)
- Blue (76%)



- Cyan (0%)
- Magenta (12%)
- Yellow (13%)
- Black (13%)




- Cyan (13%)
- Magenta (23%)
- Yellow (24%)

Brightness & Saturation Gradients


These gradients show how the HunterLab color 76.8232, 4.4986, 8.4794 changes by changing the brightness by 10 percent. The first figure shows a shift by +10% for each color and the second figure -10%.


Similar to the brightness gradients but the following saturation gradients show a change of the HunterLab color 76.8232, 4.4986, 8.4794 by changing the saturation by 10% instead.


 76.8232, 4.4986,
8.4794

 76.8232, 4.4986,
8.4794


205.1776, 0.8504,
17.2193

 65.2915, 4.6784,
7.6120


 101.6896, 3.9764,
10.2795

 54.4010, 4.8019,
6.7631


114.9664, 3.6464,
11.2099

 44.1941, 4.8600,
5.9332


128.7754, 3.2739,
12.1610

 34.7199, 4.8439,
5.1201

143.0969, 2.8613,
13.1326

 26.0403, 4.7416,
4.3205

157.9132, 2.4109,
14.1244

 18.2359, 4.5357,
3.5277

173.2082, 1.9246,

 11.4190, 4.1996,

15.1363

2.7278

188.9674, 1.4039,
16.1680

■ 3.7980, 10.1554,
2.6586

0.0000, NaN, NaN

■ 76.8232, 4.4986,
8.4794

■ 76.8232, 4.4986,
8.4794

■ 70.4581, 11.6463,
11.3243

■ 83.5217, -2.3088,
5.6431

■ 64.4769, 19.1523,
14.1492

■ 90.5036, -8.7994,
2.8234

■ 58.9494, 26.9851,
16.9096

■ 97.1741, -15.3105,
1.8861

■ 53.9572, 35.0417,
19.5287

■ 49.5937, 43.1025,
21.8893

■ 45.9568, 50.7932,
23.8342

■ 43.1331, 57.5893,
25.1919

■ 41.1720, 62.9123,
25.8418

■ 40.3418, 65.3500,
26.0025

Harmonies

Analogous

The Analogous color harmony consists of three colors that are next to each other on the color wheel.



76.8249, 5.7528, 4.0141



76.8232, 4.4986, 8.4794



76.8249, 0.9212, 11.6155

Triad

The Triadic color harmony groups three colors that are evenly spaced from another and form a triangle on the color wheel.



76.8249, 4.4963, 8.4806



76.8249, -12.1719, 8.7532



76.8249, -4.2793, -5.5413

Complementary

The Complementary color scheme is a pair of colors which are on the opposite of each other on the color wheel.



76.8232, 4.4986, 8.4794



82.3712, -12.1685, 0.2932

Split Complementary

Split-complementary colors differ from the complementary color scheme. The scheme consists of three colors, the original color and two neighbors of the complement color.



76.8249, -9.0019, -4.0780



76.8232, 4.4986, 8.4794



76.8249, -13.4863, 4.3491

Square

The Square scheme is like the rectangle color scheme, but the four colors are evenly spaced on the color wheel.



76.8249, 4.4963, 8.4806



76.8249, -8.7044, 11.7656



76.8249, -12.3405, -0.3808



76.8249, 0.6087, -4.2638

Rectangle

The Rectangle color scheme consists of four colors that form a rectangle on the color wheel.



76.8232, 4.4986, 8.4794



76.8249, -2.2511, 12.6315



76.8249, -12.3405, -0.3808



76.8249, -5.9381, -5.3521

Sweetspot

The Sweet Spot groups the original color and five complimentary colors.



76.8249, 4.4963, 8.4806



96.7695, -2.2408, 6.7594



76.8088, 10.6463, -4.7514



44.4917, -0.7643, 3.2428

0.0000, NaN, NaN



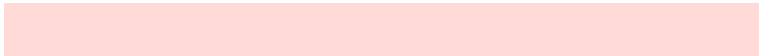
46.2646, -2.4686, 2.5136

Same Dimension

The Same Dimension uses a secret algorithm to generate beautiful new colors.



76.8249, 4.4963, 8.4806



87.4164, 7.4138, 10.7555



81.3188, -3.2462, 13.2660



37.3098, 0.8127, 3.4473



31.0558, 49.7053, 20.0066



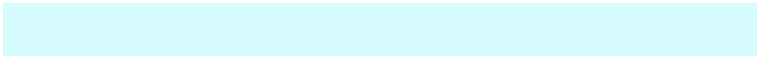
8.6296, 11.6418, 5.5213

Inverse Universe

The Inverse Universe completely reimagines the original color for something new.



82.3712, -12.1685, 0.2932



95.1247, -15.7671, -0.6284



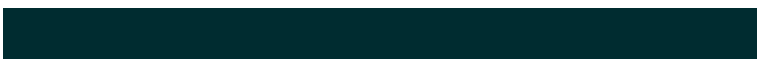
77.6715, -4.6009, -5.5107



39.1477, -4.7045, 0.7353



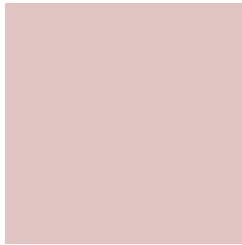
52.6302, -23.8814, -14.2301



14.1022, -6.5958, -3.3880

Previews

White Background



This preview shows how the HunterLab color 76.8232, 4.4986, 8.4794 looks on a white background.

Color Contrast Check

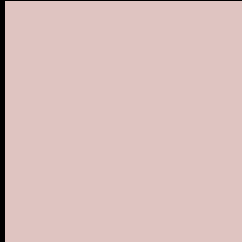
Large Text (above 18pt) WCAG AA × Fail

Any Text WCAG AA × Fail

Large Text (above 18pt) WCAG AAA × Fail

Any Text WCAG AAA × Fail

Black Background



This preview shows how the HunterLab color 76.8232, 4.4986, 8.4794 looks on a black background.

Color Contrast Check

Large Text (above 18pt) WCAG AA ✓ Pass

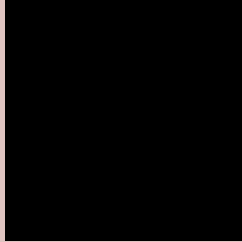
Any Text WCAG AA ✓ Pass

Large Text (above 18pt) WCAG AAA ✓ Pass

Any Text WCAG AAA ✓ Pass

If you want to check with other color combinations, try the [Color Contrast Checker](#).

HunterLab 76.8232, 4.4986, 8.4794 Background



This preview shows how black text looks on a background with the HunterLab color 76.8232, 4.4986, 8.4794.



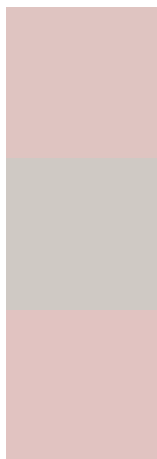
This preview shows how white text looks on a background with the HunterLab color 76.8232, 4.4986,

8.4794.

Color Blindness Simulation

Color vision deficiency is a very complex topic, and I could not describe the different causes any better than Wikipedia does, so if you want to learn more, you should check out their [article about color blindness](#).

Dichromacy



Original Color

76.8232, 4.4986, 8.4794

Protanopia

76.8272, -2.9839, 6.9850

Deuteranopia

76.7385, 5.7192, 8.4056



Tritanopia

76.9380, 8.8576, 1.0789

Trichromacy



Original Color

76.8232, 4.4986, 8.4794

Protanomaly

76.7679, -0.1470, 7.4263

Deuteranomaly

76.6340, 5.3689, 8.2819

Tritanomaly

76.9346, 6.9752, 3.9869

Monochromacy



Original Color

76.8232, 4.4986, 8.4794

Achromatopsia

77.7063, -4.1462, 4.2219

Achromatomaly

77.3255, -1.0249, 5.7312

CSS Examples

Text

The CSS property to change the color of the text to HunterLab 76.8232, 4.4986, 8.4794 is called "color". The color property can be set on classes, ids or directly on the HTML element.

This example shows how text in the color `rgb(223, 196, 193)` looks like.

```
.text, #text, p{  
    color:rgb(223, 196, 193)  
}
```

If you want to add a text shadow in that color use the text-shadow property, you can generate a text shadow directly with our [CSS Text Shadow Generator](#).

Here you see how black text with a 4 pixel rgb(223, 196, 193) colored shadow looks like.

```
.shadow{ text-shadow: 4px 4px 2px rgb(223, 196, 193) }
```

Border

The CSS property to change the border of an element to HunterLab 76.8232, 4.4986, 8.4794 is called "border". The border property can be set on classes, ids or directly on the HTML element.

This example shows the color as border, it can be applied via the CSS property "border" or "border-color".

```
.border, #border, table{ border:4px solid rgb(223, 196, 193) }
```


If only the border color should be changed use the property `border-color`.

```
.border{ border-color:rgb(223, 196, 193) }
```

If you want to add a box shadow in that color use:

Here you see how a box with a 4 pixel `rgb(223, 196, 193)` colored shadow looks like.

```
.boxshadow{ -moz-box-shadow:4px 4px 4px  
4px rgb(223, 196, 193); -webkit-box-  
shadow:4px 4px 4px 4px rgb(223, 196, 193);  
box-shadow:4px 4px 4px 4px rgb(223, 196,  
193) }
```

Background

The CSS property to change the background color of an element to HunterLab 76.8232, 4.4986, 8.4794 is called "background". The background property can be set on classes, ids or directly on the HTML element.

```
.background, #background, body{  
background: rgb(223, 196, 193) }
```

If only the background color should be changed can be used:

```
.background{ background-color: rgb(223,  
196, 193) }
```

This example shows the color as background, it is applied via the CSS property "background".

To optimize and compress your CSS code, you can use our [online CSS compressor and optimizer](#) based on csstidy. If you want to create a linear or radial gradient as background or border, check our [CSS Gradient Generator](#).

Hey! You found this booklet interesting? Support Converting Colors with the new Membership Option!

The pro membership hides all ads, plus gives you double the colors in the color bucket, and more awesome pro features!

[Learn more, Memberships starting at \\$2.50/m!](#)

**Follow me
on Twitter!**

@ConvertingColor