

Converting Colors

HunterLab(76.8880, 5.7070,
8.7699)

Have a look what the booklet for
HunterLab(76.8880, 5.7070, 8.7699)
contains.

HunterLab(76.8435, 6.0706, 8.5297)	3
<i>Conversions</i>	4
<i>Details</i>	6
<i>Harmonies</i>	12
<i>Previews</i>	24
<i>Color Blindness Simulation</i>	28
<i>CSS Examples</i>	31

Color

**HunterLab(76.8435, 6.0706,
8.5297)**

Conversions

Conversions Part 1

Format	Color
Hex	E2C3C1
RGB	226, 195, 193
RGB Percent	89%, 76%, 76%
CMY	0.1137, 0.2353, 0.2431
CMYK	0.00, 0.14, 0.15, 0.11
HSL	4°, 36%, 82%
HSV	4°, 15%, 89%
XYZ	60.5048, 59.0492, 58.6607
YIQ	204.0410, 19.1180, 5.9500

Conversions

Conversions Part 2

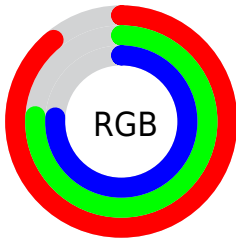
Format	Color
R _Y B	226, 195, 193
Decimal	14861249
CIE Lab	81.32, 10.64, 5.05
CIE LCh	81, 11.777, 25.406
Yxy	59.0519, 0.3395, 0.3313
Android (android.graphics.Color)	4293051329 (0xFFE2C3C1)
YUV	204.0410, -5.4432, 19.2580
Hunter-Lab	76.8435, 6.0706, 8.5297

Details

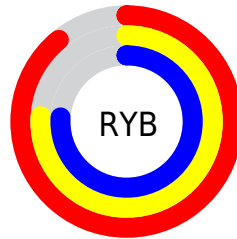
The HunterLab color **76.8435, 6.0706, 8.5297** is a light color, and the websafe version is hex **FFCCCC**. A complement of this color would be **83.7485, -13.6151, 0.4284**, and the grayscale version is **77.7421, -4.1481, 4.2239**.

A 20% lighter version of the original color is **98.8536, -4.7941, 7.0758**, and **54.3040, 6.3277, 6.4837** is the 20% darker color. If you saturate the color by 10%, you get **70.1946, 13.8452, 11.2053**, and if you desaturate by 10%, it is **83.8674, -1.3518, 5.9183**.

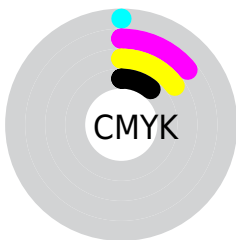
Distribution



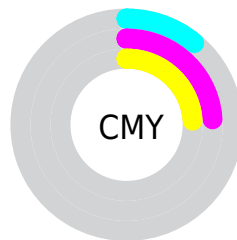
- Red (89%)
- Green (76%)
- Blue (76%)



- Red (89%)
- Yellow (76%)
- Blue (76%)



- Cyan (0%)
- Magenta (14%)
- Yellow (15%)
- Black (11%)




- Cyan (11%)
- Magenta (24%)
- Yellow (24%)

Brightness & Saturation Gradients


These gradients show how the HunterLab color 76.8435, 6.0706, 8.5297 changes by changing the brightness by 10 percent. The first figure shows a shift by +10% for each color and the second figure -10%.


Similar to the brightness gradients but the following saturation gradients show a change of the HunterLab color 76.8435, 6.0706, 8.5297 by changing the saturation by 10% instead.


 76.8435, 6.0706,
8.5297

 76.8435, 6.0706,
8.5297


205.2058, 2.9831,
17.2908

 65.3107, 6.1753,
7.6593


 101.7119, 5.6887,
10.3352

 54.4191, 6.2198,
6.8074

114.9896, 5.4249,
11.2682

 44.2110, 6.1945,
5.9741


128.7995, 5.1161,
12.2217

 34.7355, 6.0895,
5.1574

143.1219, 4.7651,
13.1956

 26.0544, 5.8919,
4.3537

157.9390, 4.3744,
14.1897

 18.2485, 5.5829,
3.5564

173.2348, 3.9460,

 11.4297, 5.1340,

15.2037

2.7511

188.9949, 3.4817,
16.2375

■ 3.8229, 11.9217,
2.6760

0.0000, NaN, NaN

■ 76.8435, 6.0706,
8.5297

■ 76.8435, 6.0706,
8.5297

■ 70.1946, 13.8452,
11.2053

■ 83.8674, -1.3518,
5.9183

■ 63.9815, 21.9786,
13.9237

■ 91.2081, -8.4423,
3.3712

■ 58.2874, 30.4114,
16.6445

■ 97.4212, -14.4265,
2.2002

■ 53.2096, 38.9852,
19.2885

■ 48.8579, 47.3884,
21.7255

■ 45.3423, 55.1228,
23.7743

■ 42.7498, 61.5495,
25.2359

■ 41.1086, 66.0690,
25.9766

■ 40.5902, 67.5697,
26.1944

Harmonies

Analogous

The Analogous color harmony consists of three colors that are next to each other on the color wheel.



76.8452, 7.1505, 3.3416



76.8435, 6.0706, 8.5297



76.8452, 2.2300, 12.2947

Triad

The Triadic color harmony groups three colors that are evenly spaced from another and form a triangle on the color wheel.



76.8452, 6.0682, 8.5310



76.8452, -12.9366, 9.8804



76.8452, -4.9818, -6.9749

Complementary

The Complementary color scheme is a pair of colors which are on the opposite of each other on the color wheel.



76.8435, 6.0706, 8.5297



83.7485, -13.6151, 0.4284

Split Complementary

Split-complementary colors differ from the complementary color scheme. The scheme consists of three colors, the original color and two neighbors of the complement color.



76.8452, -10.2400, -4.9226



76.8435, 6.0706, 8.5297



76.8452, -14.7466, 5.0148

Square

The Square scheme is like the rectangle color scheme, but the four colors are evenly spaced on the color wheel.



76.8452, 6.0682, 8.5310



76.8452, -8.7591, 13.0329



76.8452, -13.7739, -0.4351



76.8452, 0.6638, -5.8636

Rectangle

The Rectangle color scheme consists of four colors that form a rectangle on the color wheel.



76.8435, 6.0706, 8.5297



76.8452, -1.3180, 13.6207



76.8452, -13.7739, -0.4351



76.8452, -6.8516, -6.6282

Sweetspot

The Sweet Spot groups the original color and five complimentary colors.



76.8452, 6.0682, 8.5310



96.6433, -2.0272, 6.6165



77.2724, 12.4677, -6.4682



44.4225, -0.6469, 3.1647

0.0000, NaN, NaN



46.2646, -2.4686, 2.5136

Same Dimension

The Same Dimension uses a secret algorithm to generate beautiful new colors.



76.8452, 6.0682, 8.5310



85.3810, 10.0488, 10.8539



81.6595, -2.3027, 13.6459



37.1933, 1.0153, 3.3178



30.7514, 50.7221, 19.8368



8.3860, 12.4037, 5.3846

Inverse Universe

The Inverse Universe completely reimagines the original color for something new.



83.7485, -13.6151, 0.4284



95.1547, -17.8563, -0.6279



78.6561, -5.4803, -5.8650



39.2712, -4.9011, 0.8812



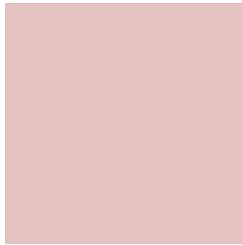
54.8982, -26.7041, -10.9716



14.6043, -7.2154, -2.6782

Previews

White Background



This preview shows how the HunterLab color 76.8435, 6.0706, 8.5297 looks on a white background.

Color Contrast Check

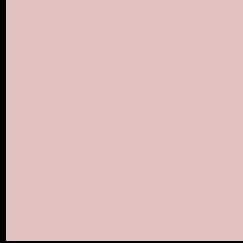
Large Text (above 18pt) WCAG AA × Fail

Any Text WCAG AA × Fail

Large Text (above 18pt) WCAG AAA × Fail

Any Text WCAG AAA × Fail

Black Background



This preview shows how the HunterLab color 76.8435, 6.0706, 8.5297 looks on a black background.

Color Contrast Check

Large Text (above 18pt) WCAG AA ✓ Pass

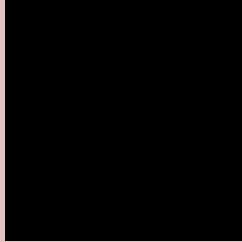
Any Text WCAG AA ✓ Pass

Large Text (above 18pt) WCAG AAA ✓ Pass

Any Text WCAG AAA ✓ Pass

If you want to check with other color combinations, try the [Color Contrast Checker](#).

HunterLab 76.8435, 6.0706, 8.5297 Background



This preview shows how black text looks on a background with the HunterLab color 76.8435, 6.0706, 8.5297.



This preview shows how white text looks on a background with the HunterLab color 76.8435, 6.0706,

8.5297.

Color Blindness Simulation

Color vision deficiency is a very complex topic, and I could not describe the different causes any better than Wikipedia does, so if you want to learn more, you should check out their [article about color blindness](#).

Dichromacy



Original Color

76.8435, 6.0706, 8.5297

Protanopia

76.8272, -2.9839, 6.9850

Deuteranopia

76.7385, 5.7192, 8.4056



Tritanopia

76.9337, 10.2613, 1.5969

Trichromacy



Original Color

76.8435, 6.0706, 8.5297

Protanomaly

76.8655, 0.1874, 7.5430

Deuteranomaly

76.7385, 5.7192, 8.4056

Tritanomaly

76.9586, 8.5468, 4.0428

Monochromacy



Original Color

76.8435, 6.0706, 8.5297

Achromatopsia

77.7063, -4.1462, 4.2219

Achromatomaly

77.4212, -0.6959, 5.8478

CSS Examples

Text

The CSS property to change the color of the text to HunterLab 76.8435, 6.0706, 8.5297 is called "color". The color property can be set on classes, ids or directly on the HTML element.

This example shows how text in the color `rgb(226, 195, 193)` looks like.

```
.text, #text, p{  
    color:rgb(226, 195, 193)  
}
```

If you want to add a text shadow in that color use the text-shadow property, you can generate a text shadow directly with our [CSS Text Shadow Generator](#).

Here you see how black text with a 4 pixel rgb(226, 195, 193) colored shadow looks like.

```
.shadow{ text-shadow: 4px 4px 2px rgb(226, 195, 193) }
```

Border

The CSS property to change the border of an element to HunterLab 76.8435, 6.0706, 8.5297 is called "border". The border property can be set on classes, ids or directly on the HTML element.

This example shows the color as border, it can be applied via the CSS property "border" or "border-color".

```
.border, #border, table{ border:4px solid rgb(226, 195, 193) }
```


If only the border color should be changed use the property `border-color`.

```
.border{ border-color:rgb(226, 195, 193) }
```

If you want to add a box shadow in that color use:

Here you see how a box with a 4 pixel `rgb(226, 195, 193)` colored shadow looks like.

```
.boxshadow{ -moz-box-shadow:4px 4px 4px  
4px rgb(226, 195, 193); -webkit-box-  
shadow:4px 4px 4px 4px rgb(226, 195, 193);  
box-shadow:4px 4px 4px 4px rgb(226, 195,  
193) }
```

Background

The CSS property to change the background color of an element to HunterLab 76.8435, 6.0706, 8.5297 is called "background". The background property can be set on classes, ids or directly on the HTML element.

```
.background, #background, body{  
background: rgb(226, 195, 193) }
```

If only the background color should be changed can be used:

```
.background{ background-color: rgb(226,  
195, 193) }
```

This example shows the color as background, it is applied via the CSS property "background".

To optimize and compress your CSS code, you can use our [online CSS compressor and optimizer](#) based on csstidy. If you want to create a linear or radial gradient as background or border, check our [CSS Gradient Generator](#).

Hey! You found this booklet interesting? Support Converting Colors with the new Membership Option!

The pro membership hides all ads, plus gives you double the colors in the color bucket, and more awesome pro features!

[Learn more, Memberships starting at \\$2.50/m!](#)

**Follow me
on Twitter!**

@ConvertingColor