

Converting Colors

HunterLab(76.8954, 1.8802,
8.2428)

Have a look what the booklet for
HunterLab(76.8954, 1.8802, 8.2428)
contains.

HunterLab(76.9342, 1.8957, 8.1060)	3
<i>Conversions</i>	4
<i>Details</i>	6
<i>Harmonies</i>	12
<i>Previews</i>	24
<i>Color Blindness Simulation</i>	28
<i>CSS Examples</i>	31

Color

**HunterLab(76.9342, 1.8957,
8.1060)**

Conversions

Conversions Part 1

Format	Color
Hex	DAC6C2
RGB	218, 198, 194
RGB Percent	85%, 78%, 76%
CMY	0.1451, 0.2235, 0.2392
CMYK	0.00, 0.09, 0.11, 0.15
HSL	10°, 24%, 81%
HSV	10°, 11%, 85%
XYZ	58.8452, 59.1887, 59.3621
YIQ	203.5240, 13.2040, 2.9960

Conversions

Conversions Part 2

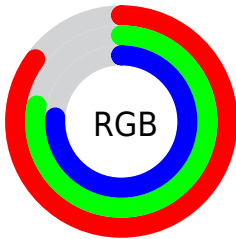
Format	Color
R _Y B	218, 199, 194
Decimal	14337730
CIE Lab	81.40, 6.34, 4.54
CIE LCh	81, 7.797, 35.602
Yxy	59.1913, 0.3317, 0.3337
Android (android.graphics.Color)	4292527810 (0xFFDAC6C2)
YUV	203.5240, -4.6953, 12.6955
Hunter-Lab	76.9342, 1.8957, 8.1060

Details

The HunterLab color $76.9342, 1.8957, 8.1060$ is a light color, and the websafe version is hex `CCCCCC`. A complement of this color would be $80.3886, -9.7850, 0.4423$, and the grayscale version is $77.5197, -4.1363, 4.2118$.

A 20% lighter version of the original color is $99.8409, -6.2079, 7.7041$, and $54.4302, 2.5106, 6.5574$ is the 20% darker color. If you saturate the color by 10%, you get $71.0427, 8.0097, 11.2587$, and if you desaturate by 10%, it is $83.0972, -3.9000, 4.8784$.

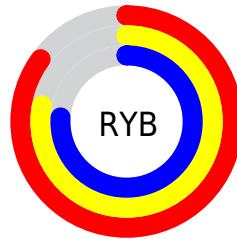
Distribution



Red (85%)

Green (78%)

Blue (76%)



Red (85%)

Yellow (78%)

Blue (76%)

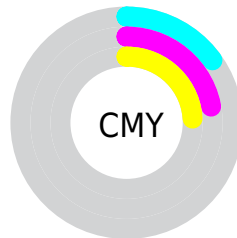


Cyan (0%)

Magenta (9%)

Yellow (11%)

Black (15%)



Cyan (15%)

Magenta (22%)

Yellow (24%)

Brightness & Saturation Gradients

These gradients show how the HunterLab color 76.9342, 1.8957, 8.1060 changes by changing the brightness by 10 percent. The first figure shows a shift by +10% for each color and the second figure -10%.

Similar to the brightness gradients but the following saturation gradients show a change of the HunterLab color 76.9342, 1.8957, 8.1060 by changing the saturation by 10% instead.

■ 76.9342, 1.8957,
8.1060

■ 76.9342, 1.8957,
8.1060

205.3316, -2.7005,
16.6849

■ 65.3966, 2.2031,
7.2609

■ 101.8114, 1.1356,
9.8649

■ 54.5000, 2.4610,
6.4359

115.0933, 0.6937,
10.7763

■ 44.2864, 2.6615,
5.6316

128.9072, 0.2134,
11.7090

■ 34.8051, 2.7975,
4.8465

143.2334, -0.3033,
12.6629

■ 26.1177, 2.8592,
4.0779

158.0543, -0.8546,
13.6378

■ 18.3047, 2.8323,
3.3203

173.3537, -1.4388,

■ 11.4778, 2.6944,

14.6333

2.5620

189.1172, -2.0545,
15.6491

■ 3.9321, 6.8150,
2.7525

0.0000, NaN, NaN

■ 76.9342, 1.8957,
8.1060

■ 76.9342, 1.8957,
8.1060

■ 71.0427, 8.0097,
11.2587

■ 83.0972, -3.9000,
4.8784

■ 65.4586, 14.4715,
14.2998

■ 89.4930, -9.4031,
1.5939

■ 60.2330, 21.2811,
17.1806

■ 95.9467, -15.4839,
0.3883

■ 55.4252, 28.3996,
19.8287

■ 96.7706, -16.7591,
1.3714

■ 51.1042, 35.7203,
22.1443

■ 47.3453, 43.0359,
24.0014

■ 44.2239, 50.0155,
25.2642

■ 41.8014, 56.2170,
25.8295

■ 40.2365, 60.7038,
25.8563

Harmonies

Analogous

The Analogous color harmony consists of three colors that are next to each other on the color wheel.



76.9359, 3.2630, 4.8600



76.9342, 1.8957, 8.1060



76.9359, -1.0821, 10.2254

Triad

The Triadic color harmony groups three colors that are evenly spaced from another and form a triangle on the color wheel.



76.9359, 1.8935, 8.1072



76.9359, -10.6207, 6.9910



76.9359, -3.3981, -3.0201

Complementary

The Complementary color scheme is a pair of colors which are on the opposite of each other on the color wheel.



76.9342, 1.8957, 8.1060



80.3886, -9.7850, 0.4423

Split Complementary

Split-complementary colors differ from the complementary color scheme. The scheme consists of three colors, the original color and two neighbors of the complement color.



76.9359, -7.0903, -2.3825



76.9342, 1.8957, 8.1060



76.9359, -11.2139, 3.5095

Square

The Square scheme is like the rectangle color scheme, but the four colors are evenly spaced on the color wheel.



76.9359, 1.8935, 8.1072



76.9359, -8.2972, 9.6030



76.9359, -9.9334, 0.0507



76.9359, 0.1703, -1.6521

Rectangle

The Rectangle color scheme consists of four colors that form a rectangle on the color wheel.



76.9342, 1.8957, 8.1060



76.9359, -3.5507, 10.7710



76.9359, -9.9334, 0.0507



76.9359, -4.6661, -3.0340

Sweetspot

The Sweet Spot groups the original color and five complimentary colors.



76.9359, 1.8935, 8.1072



97.7331, -3.2909, 6.6103



76.3839, 7.3441, -2.1859



44.9375, -1.2671, 3.2033

0.0000, NaN, NaN



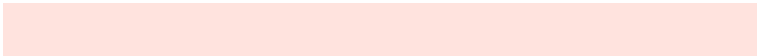
46.2646, -2.4686, 2.5136

Same Dimension

The Same Dimension uses a secret algorithm to generate beautiful new colors.



76.9359, 1.8935, 8.1072



90.3728, 3.7666, 10.4838



80.5571, -4.2624, 11.9990



36.6070, 0.4521, 3.5738



31.3131, 46.4414, 20.1080



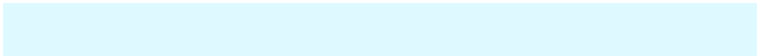
8.6299, 9.8286, 5.4898

Inverse Universe

The Inverse Universe completely reimagines the original color for something new.



80.3886, -9.7850, 0.4423



95.2722, -12.8132, -0.3945



76.6637, -3.7170, -4.1236



38.0006, -4.2603, 0.4804



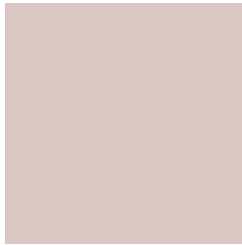
48.0858, -18.7186, -19.6951



12.6422, -5.2927, -4.3763

Previews

White Background



This preview shows how the HunterLab color 76.9342, 1.8957, 8.1060 looks on a white background.

Color Contrast Check

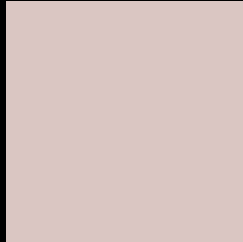
Large Text (above 18pt) WCAG AA × Fail

Any Text WCAG AA × Fail

Large Text (above 18pt) WCAG AAA × Fail

Any Text WCAG AAA × Fail

Black Background



This preview shows how the HunterLab color 76.9342, 1.8957, 8.1060 looks on a black background.

Color Contrast Check

Large Text (above 18pt) WCAG AA ✓ Pass

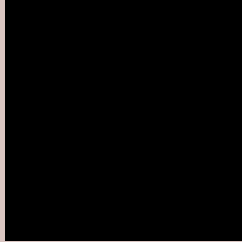
Any Text WCAG AA ✓ Pass

Large Text (above 18pt) WCAG AAA ✓ Pass

Any Text WCAG AAA ✓ Pass

If you want to check with other color combinations, try the [Color Contrast Checker](#).

HunterLab 76.9342, 1.8957, 8.1060 Background



This preview shows how black text looks on a background with the HunterLab color 76.9342, 1.8957, 8.1060.



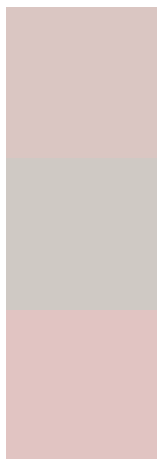
This preview shows how white text looks on a background with the HunterLab color 76.9342, 1.8957,

8.1060.

Color Blindness Simulation

Color vision deficiency is a very complex topic, and I could not describe the different causes any better than Wikipedia does, so if you want to learn more, you should check out their [article about color blindness](#).

Dichromacy



Original Color

76.9342, 1.8957, 8.1060

Protanopia

76.8272, -2.9839, 6.9850

Deuteranopia

77.0600, 5.3526, 8.3083



Tritanopia

76.7783, 6.9631, -0.1583

Trichromacy



Original Color

76.9342, 1.8957, 8.1060

Protanomaly

76.8749, -1.3240, 7.5272

Deuteranomaly

77.0436, 3.7876, 8.2625

Tritanomaly

76.7774, 5.0704, 2.7964

Monochromacy



Original Color

76.9342, 1.8957, 8.1060

Achromatopsia

77.7063, -4.1462, 4.2219

Achromatomaly

77.4380, -2.1906, 5.8411

CSS Examples

Text

The CSS property to change the color of the text to HunterLab 76.9342, 1.8957, 8.1060 is called "color". The color property can be set on classes, ids or directly on the HTML element.

This example shows how text in the color `rgb(218, 198, 194)` looks like.

```
.text, #text, p{  
    color:rgb(218, 198, 194)  
}
```

If you want to add a text shadow in that color use the text-shadow property, you can generate a text shadow directly with our [CSS Text Shadow Generator](#).

Here you see how black text with a 4 pixel rgb(218, 198, 194) colored shadow looks like.

```
.shadow{ text-shadow: 4px 4px 2px rgb(218, 198, 194) }
```

Border

The CSS property to change the border of an element to HunterLab 76.9342, 1.8957, 8.1060 is called "border". The border property can be set on classes, ids or directly on the HTML element.

This example shows the color as border, it can be applied via the CSS property "border" or "border-color".

```
.border, #border, table{ border:4px solid rgb(218, 198, 194) }
```


If only the border color should be changed use the property border-color.

```
.border{ border-color:rgb(218, 198, 194) }
```

If you want to add a box shadow in that color use:

Here you see how a box with a 4 pixel rgb(218, 198, 194) colored shadow looks like.

```
.boxshadow{ -moz-box-shadow:4px 4px 4px  
4px rgb(218, 198, 194); -webkit-box-  
shadow:4px 4px 4px 4px rgb(218, 198, 194);  
box-shadow:4px 4px 4px 4px rgb(218, 198,  
194) }
```

Background

The CSS property to change the background color of an element to HunterLab 76.9342, 1.8957, 8.1060 is called "background". The background property can be set on classes, ids or directly on the HTML element.

```
.background, #background, body{  
background: rgb(218, 198, 194) }
```

If only the background color should be changed can be used:

```
.background{ background-color: rgb(218,  
198, 194) }
```

This example shows the color as background, it is applied via the CSS property "background".

To optimize and compress your CSS code, you can use our [online CSS compressor and optimizer](#) based on csstidy. If you want to create a linear or radial gradient as background or border, check our [CSS Gradient Generator](#).

Hey! You found this booklet interesting? Support Converting Colors with the new Membership Option!

The pro membership hides all ads, plus gives you double the colors in the color bucket, and more awesome pro features!

[Learn more, Memberships starting at \\$2.50/m!](#)

**Follow me
on Twitter!**

@ConvertingColor