

Converting Colors

HunterLab(77.0493, 1.8290,
11.3321)

Have a look what the booklet for
HunterLab(77.0493, 1.8290,
11.3321) contains.

HunterLab(77.0378, 1.8491, 11.3199)	3
<i>Conversions</i>	4
<i>Details</i>	6
<i>Harmonies</i>	12
<i>Previews</i>	24
<i>Color Blindness Simulation</i>	28
<i>CSS Examples</i>	31

Color

**HunterLab(77.0378, 1.8491,
11.3199)**

Conversions

Conversions Part 1

Format	Color
Hex	DDC6BB
RGB	221, 198, 187
RGB Percent	87%, 78%, 73%
CMY	0.1333, 0.2235, 0.2667
CMYK	0.00, 0.10, 0.15, 0.13
HSL	19°, 33%, 80%
HSV	19°, 15%, 87%
XYZ	58.9826, 59.3482, 55.3604
YIQ	203.6230, 17.2390, 1.4550

Conversions

Conversions Part 2

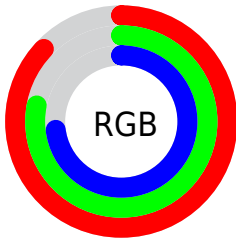
Format	Color
R _Y B	221, 203, 187
Decimal	14534331
CIE Lab	81.48, 6.29, 8.45
CIE LCh	81, 10.534, 53.310
Yxy	59.3509, 0.3396, 0.3417
Android (android.graphics.Color)	4292724411 (0xFFDDC6BB)
YUV	203.6230, -8.1951, 15.2396
Hunter-Lab	77.0378, 1.8491, 11.3199

Details

The HunterLab color $77.0378, 1.8491, 11.3199$ is a light color, and the websafe version is hex `CCCCCC`. A complement of this color would be $78.6620, -9.2422, -3.2513$, and the grayscale version is $77.5753, -4.1392, 4.2148$.

A 20% lighter version of the original color is $99.6248, -7.3950, 10.7952$, and $54.5662, 2.6540, 9.1632$ is the 20% darker color. If you saturate the color by 10%, you get $72.0946, 6.4126, 15.3003$, and if you desaturate by 10%, it is $82.1861, -2.3857, 7.0366$.

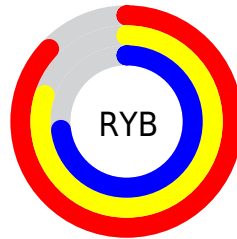
Distribution



Red (87%)

Green (78%)

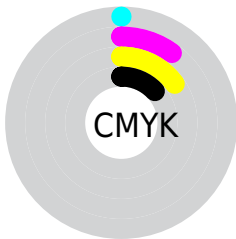
Blue (73%)



Red (87%)

Yellow (80%)

Blue (73%)

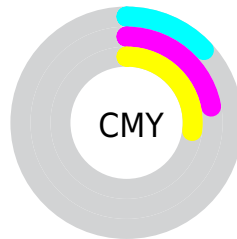


Cyan (0%)

Magenta (10%)

Yellow (15%)

Black (13%)



Cyan (13%)

Magenta (22%)

Yellow (27%)

Brightness & Saturation Gradients

These gradients show how the HunterLab color 77.0378, 1.8491, 11.3199 changes by changing the brightness by 10 percent. The first figure shows a shift by +10% for each color and the second figure -10%.

Similar to the brightness gradients but the following saturation gradients show a change of the HunterLab color 77.0378, 1.8491, 11.3199 by changing the saturation by 10% instead.

■ 77.0378, 1.8491,
11.3199

■ 77.0378, 1.8491,
11.3199

205.4753, -2.7661,
21.3137

■ 65.4948, 2.1590,
10.2778

■ 101.9252, 1.0841,
13.4410

■ 54.5923, 2.4196,
9.2427

115.2118, 0.6400,
14.5206

■ 44.3726, 2.6231,
8.2120

129.0303, 0.1575,
15.6145

■ 34.8847, 2.7623,
7.1799

143.3609, -0.3613,
16.7233

■ 26.1900, 2.8275,
6.1374

158.1860, -0.9146,
17.8473

■ 18.3689, 2.8045,
5.0682

173.4895, -1.5007,

■ 11.5328, 2.6711,

18.9870

3.9922

189.2571, -2.1183,
20.1424

■ 4.0534, 6.5494,
2.8373

0.0000, NaN, NaN

■ 77.0378, 1.8491,
11.3199

■ 77.0378, 1.8491,
11.3199

■ 72.0946, 6.4126,
15.3003

■ 82.1861, -2.3857,
7.0366

■ 67.3763, 11.3378,
18.9170

■ 87.5129, -6.3151,
2.4934

■ 62.9138, 16.6392,
22.1016

■ 93.0018, -9.9720,
-2.2714

■ 58.7406, 22.3159,
24.7722

■ 97.0115, -15.8936,
1.6789

■ 54.8942, 28.3370,
26.8376

■ 51.4154, 34.6262,
28.2064

■ 48.3453, 41.0449,
28.8065

■ 45.7212, 47.3778,
28.6227

■ 44.6611, 50.1633,
28.3981

Harmonies

Analogous

The Analogous color harmony consists of three colors that are next to each other on the color wheel.



77.0395, 5.1221, 7.8025



77.0378, 1.8491, 11.3199



77.0395, -2.9662, 12.9144

Triad

The Triadic color harmony groups three colors that are evenly spaced from another and form a triangle on the color wheel.



77.0395, 1.8468, 11.3211



77.0395, -13.6365, 5.2749



77.0395, -0.1864, -4.8978

Complementary

The Complementary color scheme is a pair of colors which are on the opposite of each other on the color wheel.



77.0378, 1.8491, 11.3199



78.6620, -9.2422, -3.2513

Split Complementary

Split-complementary colors differ from the complementary color scheme. The scheme consists of three colors, the original color and two neighbors of the complement color.



77.0395, -5.2566, -5.6836



77.0378, 1.8491, 11.3199



77.0395, -12.9359, 0.4009

Square

The Square scheme is like the rectangle color scheme, but the four colors are evenly spaced on the color wheel.



77.0395, 1.8468, 11.3211



77.0395, -11.8396, 9.5738



77.0395, -9.9004, -3.6878



77.0395, 3.9269, -1.6053

Rectangle

The Rectangle color scheme consists of four colors that form a rectangle on the color wheel.



77.0378, 1.8491, 11.3199



77.0395, -6.3647, 12.7494



77.0395, -9.9004, -3.6878



77.0395, -1.8387, -5.4723

Sweetspot

The Sweet Spot groups the original color and five complimentary colors.



77.0395, 1.8468, 11.3211



96.8642, -2.9704, 8.0961



74.5509, 11.4046, -2.4756



44.6119, -1.2172, 3.9160

0.0000, NaN, NaN



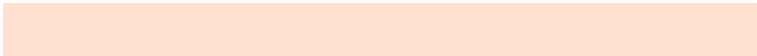
46.2646, -2.4686, 2.5136

Same Dimension

The Same Dimension uses a secret algorithm to generate beautiful new colors.



77.0395, 1.8468, 11.3211



88.9696, 3.6133, 14.6438



82.1236, -6.7168, 16.5439



37.0624, -0.3296, 4.0741



34.3075, 37.4768, 21.7962



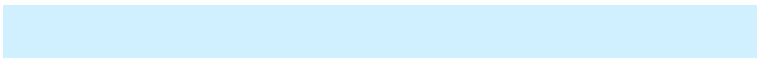
9.5713, 7.3267, 6.0261

Inverse Universe

The Inverse Universe completely reimagines the original color for something new.



78.6620, -9.2422, -3.2513



91.2114, -11.7193, -5.4989



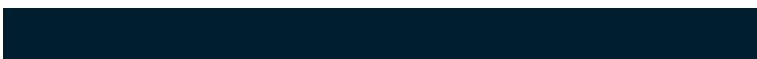
73.5046, -0.7354, -9.8981



37.5261, -3.4951, -0.0877



39.7747, -6.8872, -34.8474



10.8571, -2.8497, -7.4187

Previews

White Background



This preview shows how the HunterLab color 77.0378, 1.8491, 11.3199 looks on a white background.

Color Contrast Check

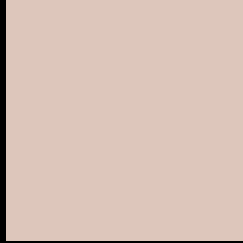
Large Text (above 18pt) WCAG AA × Fail

Any Text WCAG AA × Fail

Large Text (above 18pt) WCAG AAA × Fail

Any Text WCAG AAA × Fail

Black Background



This preview shows how the HunterLab color 77.0378, 1.8491, 11.3199 looks on a black background.

Color Contrast Check

Large Text (above 18pt) WCAG AA ✓ Pass

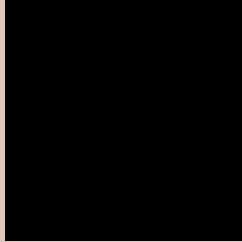
Any Text WCAG AA ✓ Pass

Large Text (above 18pt) WCAG AAA ✓ Pass

Any Text WCAG AAA ✓ Pass

If you want to check with other color combinations, try the [Color Contrast Checker](#).

HunterLab 77.0378, 1.8491, 11.3199 Background



This preview shows how black text looks on a background with the HunterLab color 77.0378, 1.8491, 11.3199.



This preview shows how white text looks on a background with the HunterLab color 77.0378, 1.8491,

Color Blindness Simulation

Color vision deficiency is a very complex topic, and I could not describe the different causes any better than Wikipedia does, so if you want to learn more, you should check out their [article about color blindness](#).

Dichromacy



Original Color

77.0378, 1.8491, 11.3199

Protanopia

77.1171, -3.9443, 10.4355

Deuteranopia

76.8844, 5.8661, 11.2235



Tritanopia

77.1561, 8.1552, 0.8320

Trichromacy



Original Color

77.0378, 1.8491, 11.3199

Protanomaly

77.1688, -2.2629, 10.9573

Deuteranomaly

76.8604, 4.2824, 11.1697

Tritanomaly

77.0922, 5.9396, 4.6339

Monochromacy



Original Color

77.0378, 1.8491, 11.3199

Achromatopsia

77.7063, -4.1462, 4.2219

Achromatomaly

77.4725, -2.1915, 6.8127

CSS Examples

Text

The CSS property to change the color of the text to HunterLab 77.0378, 1.8491, 11.3199 is called "color". The color property can be set on classes, ids or directly on the HTML element.

This example shows how text in the color `rgb(221, 198, 187)` looks like.

```
.text, #text, p{  
    color:rgb(221, 198, 187)  
}
```

If you want to add a text shadow in that color use the text-shadow property, you can generate a text shadow directly with our [CSS Text Shadow Generator](#).

Here you see how black text with a 4 pixel rgb(221, 198, 187) colored shadow looks like.

```
.shadow{ text-shadow: 4px 4px 2px rgb(221, 198, 187) }
```

Border

The CSS property to change the border of an element to HunterLab 77.0378, 1.8491, 11.3199 is called "border". The border property can be set on classes, ids or directly on the HTML element.

This example shows the color as border, it can be applied via the CSS property "border" or "border-color".

```
.border, #border, table{ border:4px solid rgb(221, 198, 187) }
```


If only the border color should be changed use the property `border-color`.

```
.border{ border-color:rgb(221, 198, 187) }
```

If you want to add a box shadow in that color use:

Here you see how a box with a 4 pixel `rgb(221, 198, 187)` colored shadow looks like.

```
.boxshadow{ -moz-box-shadow:4px 4px 4px  
4px rgb(221, 198, 187); -webkit-box-  
shadow:4px 4px 4px 4px rgb(221, 198, 187);  
box-shadow:4px 4px 4px 4px rgb(221, 198,  
187) }
```

Background

The CSS property to change the background color of an element to HunterLab 77.0378, 1.8491, 11.3199 is called "background". The background property can be set on classes, ids or directly on the HTML element.

```
.background, #background, body{  
background: rgb(221, 198, 187) }
```

If only the background color should be changed can be used:

```
.background{ background-color: rgb(221,  
198, 187) }
```

This example shows the color as background, it is applied via the CSS property "background".

To optimize and compress your CSS code, you can use our [online CSS compressor and optimizer](#) based on csstidy. If you want to create a linear or radial gradient as background or border, check our [CSS Gradient Generator](#).

Hey! You found this booklet interesting? Support Converting Colors with the new Membership Option!

The pro membership hides all ads, plus gives you double the colors in the color bucket, and more awesome pro features!

[Learn more, Memberships starting at \\$2.50/m!](#)

**Follow me
on Twitter!**

@ConvertingColor