

Converting Colors

HunterLab(77.0839, 1.0873,
18.6343)

Have a look what the booklet for
HunterLab(77.0839, 1.0873,
18.6343) contains.

HunterLab(77.0853, 1.0726, 18.6476)	3
<i>Conversions</i>	4
<i>Details</i>	6
<i>Harmonies</i>	12
<i>Previews</i>	24
<i>Color Blindness Simulation</i>	28
<i>CSS Examples</i>	31

Color

**HunterLab(77.0853, 1.0726,
18.6476)**

Conversions

Conversions Part 1

Format	Color
Hex	E2C6A9
RGB	226, 198, 169
RGB Percent	89%, 78%, 66%
CMY	0.1137, 0.2235, 0.3372
CMYK	0.00, 0.12, 0.25, 0.11
HSL	31°, 50%, 77%
HSV	31°, 25%, 89%
XYZ	58.7195, 59.4214, 45.9107
YIQ	203.0660, 25.9970, -3.0830

Conversions

Conversions Part 2

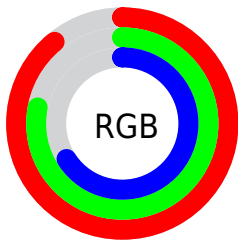
Format	Color
RYB	224, 226, 169
Decimal	14861993
CIELab	81.52, 5.49, 18.17
CIElCh	82, 18.980, 73.201
Yxy	59.4241, 0.3579, 0.3622
Android (android.graphics.Color)	4293052073 (0xFFE2C6A9)
YUV	203.0660, -16.7945, 20.1131
Hunter-Lab	77.0853, 1.0726, 18.6476

Details

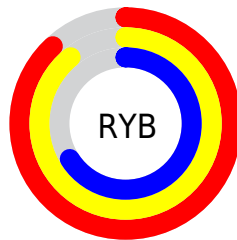
The HunterLab color $77.0853, 1.0726, 18.6476$ is a light color, and the websafe version is hex `CCCC99`. A complement of this color would be $73.3874, -6.6780, -13.0262$, and the grayscale version is $77.3701, -4.1283, 4.2037$.

A 20% lighter version of the original color is $99.0766, -10.4180, 18.6666$, and $54.5682, 1.8601, 15.3714$ is the 20% darker color. If you saturate the color by 10%, you get $73.3193, 3.9704, 23.1253$, and if you desaturate by 10%, it is $80.9998, -1.4596, 13.5522$.

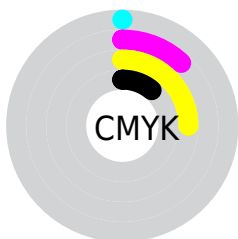
Distribution



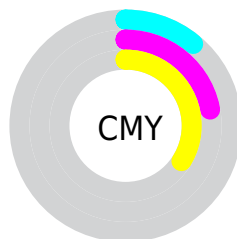
- Red (89%)
- Green (78%)
- Blue (66%)



- Red (88%)
- Yellow (89%)
- Blue (66%)



- Cyan (0%)
- Magenta (12%)
- Yellow (25%)
- Black (11%)



- Cyan (11%)
- Magenta (22%)
- Yellow (34%)

Brightness & Saturation Gradients

These gradients show how the HunterLab color 77.0853, 1.0726, 18.6476 changes by changing the brightness by 10 percent. The first figure shows a shift by +10% for each color and the second figure -10%.

Similar to the brightness gradients but the following saturation gradients show a change of the HunterLab color 77.0853, 1.0726, 18.6476 by changing the saturation by 10% instead.

■ 77.0853, 1.0726,
18.6476

■ 77.0853, 1.0726,
18.6476

205.5412, -3.8298,
32.3259

■ 65.5398, 1.4210,
17.0848

■ 101.9774, 0.2352,
21.7206

■ 54.6347, 1.7224,
15.4913

115.2662, -0.2428,
23.2402

■ 44.4122, 1.9692,
13.8557

129.0867, -0.7579,
24.7541

■ 34.9212, 2.1549,
12.1600

143.4194, -1.3082,
26.2655

■ 26.2232, 2.2703,
10.3767

158.2464, -1.8920,
27.7766

■ 18.3984, 2.3023,
8.4614

173.5519, -2.5077,

■ 11.5580, 2.2305,

29.2894

7.4813

189.3212, -3.1540,
30.8054

■ 4.1077, 5.5999,
2.8754

0.0000, NaN, NaN

■ 77.0853, 1.0726,
18.6476

■ 77.0853, 1.0726,
18.6476

■ 73.3193, 3.9704,
23.1253

■ 80.9998, -1.4596,
13.5522

■ 69.7091, 7.2626,
26.9188

■ 85.0461, -3.6428,
7.8955

■ 66.2696, 10.9618,
29.9654

■ 89.2158, -5.5045,
1.7332

■ 63.0149, 15.0737,
32.2049

■ 93.3459, -7.9149,
-2.7107

■ 59.9593, 19.5892,
33.5898

■ 96.9324, -13.6590,
1.6220

■ 57.1163, 24.4772,
34.0989

■ 97.4212, -14.4266,
2.2001

■ 54.4969, 29.6750,
33.7623

■ 53.3202, 32.2114,
33.4196

Harmonies

Analogous

The Analogous color harmony consists of three colors that are next to each other on the color wheel.



77.0871, 9.2265, 14.8640



77.0853, 1.0726, 18.6476



77.0871, -8.1213, 18.8662

Triad

The Triadic color harmony groups three colors that are evenly spaced from another and form a triangle on the color wheel.



77.0871, 1.0701, 18.6487



77.0871, -20.6178, 0.2476



77.0871, 8.3888, -9.1273

Complementary

The Complementary color scheme is a pair of colors which are on the opposite of each other on the color wheel.



77.0853, 1.0726, 18.6476



73.3874, -6.6780, -13.0262

Split Complementary

Split-complementary colors differ from the complementary color scheme. The scheme consists of three colors, the original color and two neighbors of the complement color.



77.0871, -0.0299, -14.0803



77.0853, 1.0726, 18.6476



77.0871, -16.6110, -8.2548

Square

The Square scheme is like the rectangle color scheme, but the four colors are evenly spaced on the color wheel.



77.0871, 1.0701, 18.6487



77.0871, -20.3544, 8.9096



77.0871, -9.1710, -13.7434



77.0871, 13.5860, -0.8353

Rectangle

The Rectangle color scheme consists of four colors that form a rectangle on the color wheel.



77.0853, 1.0726, 18.6476



77.0871, -13.5800, 17.0075



77.0871, -9.1710, -13.7434



77.0871, 5.8251, -11.2793

Sweetspot

The Sweet Spot groups the original color and five complimentary colors.



77.0871, 1.0701, 18.6487



96.1915, -3.5066, 10.9526



69.7134, 20.5898, -1.8642



44.1760, -1.4508, 5.5278

0.0000, NaN, NaN



46.2646, -2.4686, 2.5136

Same Dimension

The Same Dimension uses a secret algorithm to generate beautiful new colors.



77.0871, 1.0701, 18.6487



86.2211, 2.8285, 24.0337



85.6892, -13.0495, 26.6004



38.5328, -1.2774, 4.7851



40.5685, 23.6488, 25.4121



11.4888, 4.4511, 7.1573

Inverse Universe

The Inverse Universe completely reimagines the original color for something new.



73.3874, -6.6780, -13.0262



81.1747, -7.7001, -19.2169



65.0405, 7.6983, -25.3778



37.8805, -2.6524, -0.7892



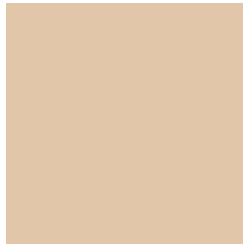
31.3927, 8.7050, -58.0297



9.2845, 0.3876, -12.4415

Previews

White Background



This preview shows how the HunterLab color 77.0853, 1.0726, 18.6476 looks on a white background.

Color Contrast Check

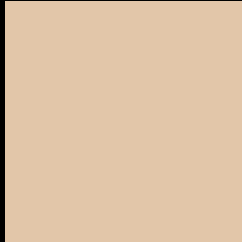
Large Text (above 18pt) WCAG AA × Fail

Any Text WCAG AA × Fail

Large Text (above 18pt) WCAG AAA × Fail

Any Text WCAG AAA × Fail

Black Background



This preview shows how the HunterLab color 77.0853, 1.0726, 18.6476 looks on a black background.

Color Contrast Check

Large Text (above 18pt) WCAG AA ✓ Pass

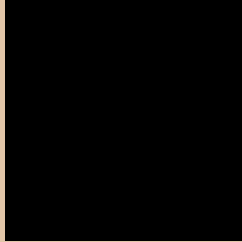
Any Text WCAG AA ✓ Pass

Large Text (above 18pt) WCAG AAA ✓ Pass

Any Text WCAG AAA ✓ Pass

If you want to check with other color combinations, try the [Color Contrast Checker](#).

HunterLab 77.0853, 1.0726, 18.6476 Background



This preview shows how black text looks on a background with the HunterLab color 77.0853, 1.0726, 18.6476.



This preview shows how white text looks on a background with the HunterLab color 77.0853, 1.0726,

Color Blindness Simulation

Color vision deficiency is a very complex topic, and I could not describe the different causes any better than Wikipedia does, so if you want to learn more, you should check out their [article about color blindness](#).

Dichromacy



Original Color

77.0853, 1.0726, 18.6476

Protanopia

77.1216, -4.8801, 17.8167

Deuteranopia

77.0876, 5.6563, 18.3500



Tritanopia

77.2547, 11.3158, 2.0042

Trichromacy



Original Color

77.0853, 1.0726, 18.6476

Protanomaly

77.1887, -3.1380, 18.2967

Deuteranomaly

77.0526, 4.0395, 18.2869

Tritanomaly

77.1902, 7.2862, 8.4887

Monochromacy



Original Color

77.0853, 1.0726, 18.6476

Achromatopsia

77.2788, -4.1234, 4.1987

Achromatomaly

77.0609, -2.4664, 9.5179

CSS Examples

Text

The CSS property to change the color of the text to HunterLab 77.0853, 1.0726, 18.6476 is called "color". The color property can be set on classes, ids or directly on the HTML element.

This example shows how text in the color `rgb(226, 198, 169)` looks like.

```
.text, #text, p{  
    color:rgb(226, 198, 169)  
}
```

If you want to add a text shadow in that color use the text-shadow property, you can generate a text shadow directly with our [CSS Text Shadow Generator](#).

Here you see how black text with a 4 pixel rgb(226, 198, 169) colored shadow looks like.

```
.shadow{ text-shadow: 4px 4px 2px rgb(226, 198, 169) }
```

Border

The CSS property to change the border of an element to HunterLab 77.0853, 1.0726, 18.6476 is called "border". The border property can be set on classes, ids or directly on the HTML element.

This example shows the color as border, it can be applied via the CSS property "border" or "border-color".

```
.border, #border, table{ border:4px solid rgb(226, 198, 169) }
```


If only the border color should be changed use the property `border-color`.

```
.border{ border-color:rgb(226, 198, 169) }
```

If you want to add a box shadow in that color use:

Here you see how a box with a 4 pixel `rgb(226, 198, 169)` colored shadow looks like.

```
.boxshadow{ -moz-box-shadow:4px 4px 4px  
4px rgb(226, 198, 169); -webkit-box-  
shadow:4px 4px 4px 4px rgb(226, 198, 169);  
box-shadow:4px 4px 4px 4px rgb(226, 198,  
169) }
```

Background

The CSS property to change the background color of an element to HunterLab 77.0853, 1.0726, 18.6476 is called "background". The background property can be set on classes, ids or directly on the HTML element.

```
.background, #background, body{  
background: rgb(226, 198, 169) }
```

If only the background color should be changed can be used:

```
.background{ background-color: rgb(226,  
198, 169) }
```

This example shows the color as background, it is applied via the CSS property "background".

To optimize and compress your CSS code, you can use our [online CSS compressor and optimizer](#) based on csstidy. If you want to create a linear or radial gradient as background or border, check our [CSS Gradient Generator](#).

Hey! You found this booklet interesting? Support Converting Colors with the new Membership Option!

The pro membership hides all ads, plus gives you double the colors in the color bucket, and more awesome pro features!

[Learn more, Memberships starting at \\$2.50/m!](#)

**Follow me
on Twitter!**

@ConvertingColor