

Converting Colors

HunterLab(77.1021, 1.3533,
17.8777)

Have a look what the booklet for
HunterLab(77.1021, 1.3533,
17.8777) contains.

| | |
|--|----|
| HunterLab(77.1344, 1.3381, 17.9384) | 3 |
| <i>Conversions</i> | 4 |
| <i>Details</i> | 6 |
| <i>Harmonies</i> | 12 |
| <i>Previews</i> | 24 |
| <i>Color Blindness Simulation</i> | 28 |
| <i>CSS Examples</i> | 31 |

Color

**HunterLab(77.1344, 1.3381,
17.9384)**

Conversions

Conversions Part 1

| Format | Color |
|-------------|----------------------------|
| Hex | E2C6AB |
| RGB | 226, 198, 171 |
| RGB Percent | 89%, 78%, 67% |
| CMY | 0.1137, 0.2235, 0.3294 |
| CMYK | 0.00, 0.12, 0.24, 0.11 |
| HSL | 29°, 49%, 78% |
| HSV | 29°, 24%, 89% |
| XYZ | 58.9088, 59.4972, 46.9073 |
| YIQ | 203.2940, 25.3550, -2.4610 |

Conversions

Conversions Part 2

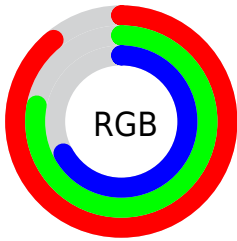
| Format | Color |
|-------------------------------------|--------------------------------|
| RYB | 226, 224, 171 |
| Decimal | 14861995 |
| CIELab | 81.57, 5.76, 17.16 |
| CIELCh | 82, 18.106, 71.436 |
| Yxy | 59.4999, 0.3563, 0.3599 |
| Android (android.graphics.Color) | 4293052075 (0xFFE2C6AB) |
| YUV | 203.2940, -15.9209, 19.9132 |
| Hunter-Lab | 77.1344, 1.3381, 17.9384 |

Details

The HunterLab color $77.1344, 1.3381, 17.9384$ is a light color, and the websafe version is hex `CCCC99`. A complement of this color would be $74.1581, -7.1511, -11.9553$, and the grayscale version is $77.4641, -4.1333, 4.2088$.

A 20% lighter version of the original color is $99.1317, -10.1135, 17.8738$, and $54.6118, 2.0948, 14.7404$ is the 20% darker color. If you saturate the color by 10%, you get $73.2457, 4.4079, 22.3969$, and if you desaturate by 10%, it is $81.1771, -1.3686, 12.8904$.

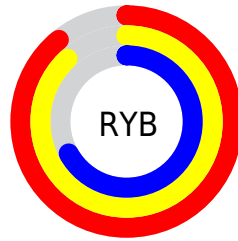
Distribution



Red (89%)

Green (78%)

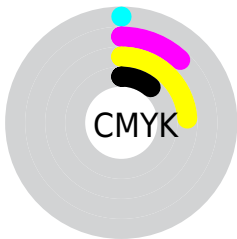
Blue (67%)



Red (89%)

Yellow (88%)

Blue (67%)

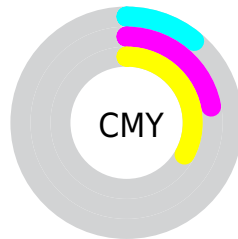


Cyan (0%)

Magenta (12%)

Yellow (24%)

Black (11%)



Cyan (11%)

Magenta (22%)

Yellow (33%)

Brightness & Saturation Gradients

These gradients show how the HunterLab color 77.1344, 1.3381, 17.9384 changes by changing the brightness by 10 percent. The first figure shows a shift by +10% for each color and the second figure -10%.

Similar to the brightness gradients but the following saturation gradients show a change of the HunterLab color 77.1344, 1.3381, 17.9384 by changing the saturation by 10% instead.

■ 77.1344, 1.3381,
17.9384

■ 77.1344, 1.3381,
17.9384

205.6093, -3.4670,
31.2251

■ 65.5863, 1.6734,
16.4314

■ 102.0313, 0.5251,
20.9097

■ 54.6785, 1.9610,
14.8979

115.3223, 0.0586,
22.3824

■ 44.4530, 2.1932,
13.3275

129.1450, -0.4454,
23.8517

■ 34.9589, 2.3632,
11.7035

143.4798, -0.9851,
25.3203

■ 26.2574, 2.4616,
10.0004

158.3088, -1.5585,
26.7904

■ 18.4288, 2.4752,
8.1765

173.6162, -2.1642,

■ 11.5841, 2.3827,

28.2636

7.1154

189.3875, -2.8007,
29.7415

■ 4.1632, 5.8110,
2.9142

0.0000, NaN, NaN

■ 77.1344, 1.3381,
17.9384

■ 77.1344, 1.3381,
17.9384

■ 73.2457, 4.4079,
22.3969

■ 81.1771, -1.3686,
12.8904

■ 69.5193, 7.8702,
26.1983

■ 85.3562, -3.7296,
7.3094

■ 65.9717, 11.7387,
29.2769

■ 89.6624, -5.7735,
1.2508

■ 62.6183, 16.0191,
31.5688

■ 93.8627, -8.7552,
-2.0761

■ 59.4755, 20.7016,
33.0203

■ 97.4212, -14.4266,
2.2001

■ 56.5587, 25.7532,
33.6022

■ 53.8815, 31.1074,
33.3345

■ 52.4690, 34.2057,
32.9300

Harmonies

Analogous

The Analogous color harmony consists of three colors that are next to each other on the color wheel.



77.1362, 8.9660, 14.1001



77.1344, 1.3381, 17.9384



77.1362, -7.4430, 18.3551

Triad

The Triadic color harmony groups three colors that are evenly spaced from another and form a triangle on the color wheel.



77.1362, 1.3356, 17.9395



77.1362, -19.9985, 0.9419



77.1362, 7.3884, -8.8552

Complementary

The Complementary color scheme is a pair of colors which are on the opposite of each other on the color wheel.



77.1344, 1.3381, 17.9384



74.1581, -7.1511, -11.9553

Split Complementary

Split-complementary colors differ from the complementary color scheme. The scheme consists of three colors, the original color and two neighbors of the complement color.



77.1362, -0.7396, -13.2831



77.1344, 1.3381, 17.9384



77.1362, -16.3877, -7.2187

Square

The Square scheme is like the rectangle color scheme, but the four colors are evenly spaced on the color wheel.



77.1362, 1.3356, 17.9395



77.1362, -19.4988, 9.1445



77.1362, -9.4279, -12.6528



77.1362, 12.5670, -1.0979

Rectangle

The Rectangle color scheme consists of four colors that form a rectangle on the color wheel.



77.1344, 1.3381, 17.9384



77.1362, -12.7395, 16.6970



77.1362, -9.4279, -12.6528



77.1362, 4.8956, -10.8195

Sweetspot

The Sweet Spot groups the original color and five complimentary colors.



77.1362, 1.3356, 17.9395



96.5622, -3.5799, 10.1731



70.3123, 19.8422, -2.1038



44.5385, -1.5822, 4.8897

0.0000, NaN, NaN



46.2646, -2.4686, 2.5136

Same Dimension

The Same Dimension uses a secret algorithm to generate beautiful new colors.



77.1362, 1.3356, 17.9395



86.2608, 3.1886, 23.1433



85.4429, -12.3478, 25.6977



38.4788, -1.1865, 4.7268



39.9279, 25.1356, 25.0434



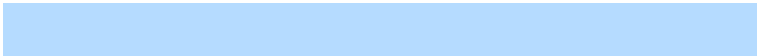
11.3312, 4.7852, 7.0660

Inverse Universe

The Inverse Universe completely reimagines the original color for something new.



74.1581, -7.1511, -11.9553



82.1899, -8.3798, -17.7496



66.0477, 6.7341, -23.7738



37.9354, -2.7425, -0.7221



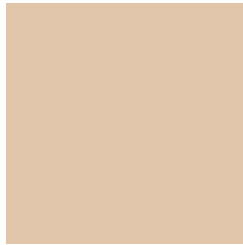
32.2039, 7.1121, -55.6050



9.4763, 0.0542, -11.9615

Previews

White Background



This preview shows how the HunterLab color 77.1344, 1.3381, 17.9384 looks on a white background.

Color Contrast Check

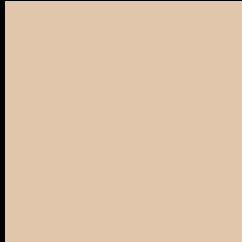
Large Text (above 18pt) WCAG AA × Fail

Any Text WCAG AA × Fail

Large Text (above 18pt) WCAG AAA × Fail

Any Text WCAG AAA × Fail

Black Background



This preview shows how the HunterLab color 77.1344, 1.3381, 17.9384 looks on a black background.

Color Contrast Check

Large Text (above 18pt) WCAG AA ✓ Pass

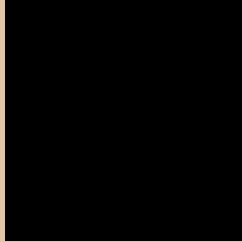
Any Text WCAG AA ✓ Pass

Large Text (above 18pt) WCAG AAA ✓ Pass

Any Text WCAG AAA ✓ Pass

If you want to check with other color combinations, try the [Color Contrast Checker](#).

HunterLab 77.1344, 1.3381, 17.9384 Background



This preview shows how black text looks on a background with the HunterLab color 77.1344, 1.3381, 17.9384.



This preview shows how white text looks on a background with the HunterLab color 77.1344, 1.3381,

17.9384.

Color Blindness Simulation

Color vision deficiency is a very complex topic, and I could not describe the different causes any better than Wikipedia does, so if you want to learn more, you should check out their [article about color blindness](#).

Dichromacy



Original Color

77.1344, 1.3381, 17.9384

Protanopia

77.0742, -4.9460, 16.9934

Deuteranopia

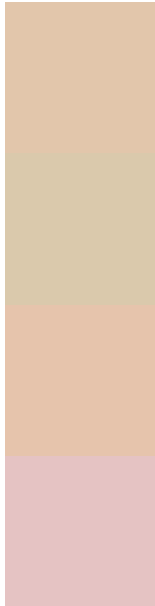
77.0275, 5.5541, 17.5191



Tritanopia

77.1473, 10.9632, 1.8680

Trichromacy



Original Color

77.1344, 1.3381, 17.9384

Protanomaly

77.2381, -2.8681, 17.5833

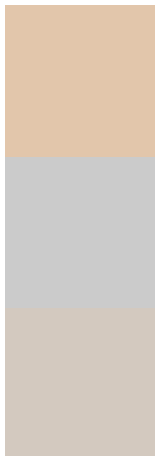
Deuteranomaly

76.9944, 3.9422, 17.4575

Tritanomaly

77.2194, 7.4419, 8.0706

Monochromacy



Original Color

77.1344, 1.3381, 17.9384

Achromatopsia

77.2788, -4.1234, 4.1987

Achromatomaly

77.0609, -2.4664, 9.5179

CSS Examples

Text

The CSS property to change the color of the text to HunterLab 77.1344, 1.3381, 17.9384 is called "color". The color property can be set on classes, ids or directly on the HTML element.

This example shows how text in the color `rgb(226, 198, 171)` looks like.

```
.text, #text, p{  
    color:rgb(226, 198, 171)  
}
```

If you want to add a text shadow in that color use the text-shadow property, you can generate a text shadow directly with our [CSS Text Shadow Generator](#).

Here you see how black text with a 4 pixel rgb(226, 198, 171) colored shadow looks like.

```
.shadow{ text-shadow: 4px 4px 2px rgb(226, 198, 171) }
```

Border

The CSS property to change the border of an element to HunterLab 77.1344, 1.3381, 17.9384 is called "border". The border property can be set on classes, ids or directly on the HTML element.

This example shows the color as border, it can be applied via the CSS property "border" or "border-color".

```
.border, #border, table{ border:4px solid rgb(226, 198, 171) }
```


If only the border color should be changed use the property `border-color`.

```
.border{ border-color:rgb(226, 198, 171) }
```

If you want to add a box shadow in that color use:

Here you see how a box with a 4 pixel `rgb(226, 198, 171)` colored shadow looks like.

```
.boxshadow{ -moz-box-shadow:4px 4px 4px  
4px rgb(226, 198, 171); -webkit-box-  
shadow:4px 4px 4px 4px rgb(226, 198, 171);  
box-shadow:4px 4px 4px 4px rgb(226, 198,  
171) }
```

Background

The CSS property to change the background color of an element to HunterLab 77.1344, 1.3381, 17.9384 is called "background". The background property can be set on classes, ids or directly on the HTML element.

```
.background, #background, body{  
background: rgb(226, 198, 171) }
```

If only the background color should be changed can be used:

```
.background{ background-color: rgb(226,  
198, 171) }
```

This example shows the color as background, it is applied via the CSS property "background".

To optimize and compress your CSS code, you can use our [online CSS compressor and optimizer](#) based on csstidy. If you want to create a linear or radial gradient as background or border, check our [CSS Gradient Generator](#).

Hey! You found this booklet interesting? Support Converting Colors with the new Membership Option!

The pro membership hides all ads, plus gives you double the colors in the color bucket, and more awesome pro features!

[Learn more, Memberships starting at \\$2.50/m!](#)

**Follow me
on Twitter!**

@ConvertingColor