

Converting Colors

HunterLab(77.1935, 3.9628,
10.3949)

Have a look what the booklet for
HunterLab(77.1935, 3.9628,
10.3949) contains.

HunterLab(77.2384, 4.2150, 10.2728)	3
<i>Conversions</i>	4
<i>Details</i>	6
<i>Harmonies</i>	12
<i>Previews</i>	24
<i>Color Blindness Simulation</i>	28
<i>CSS Examples</i>	31

Color

**HunterLab(77.2384, 4.2150,
10.2728)**

Conversions

Conversions Part 1

Format	Color
Hex	E1C5BE
RGB	225, 197, 190
RGB Percent	88%, 77%, 75%
CMY	0.1176, 0.2274, 0.2549
CMYK	0.00, 0.12, 0.16, 0.12
HSL	12°, 37%, 81%
HSV	12°, 16%, 88%
XYZ	60.3118, 59.6577, 57.0515
YIQ	204.5740, 18.9350, 3.7590

Conversions

Conversions Part 2

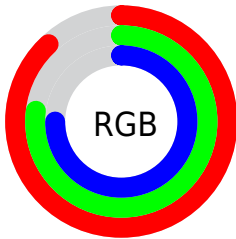
Format	Color
R _Y B	225, 199, 190
Decimal	14796222
CIE Lab	81.65, 8.74, 7.13
CIE LCh	82, 11.282, 39.189
Yxy	59.6604, 0.3407, 0.3370
Android (android.graphics.Color)	4292986302 (0xFFE1C5BE)
YUV	204.5740, -7.1850, 17.9136
Hunter-Lab	77.2384, 4.2150, 10.2728

Details

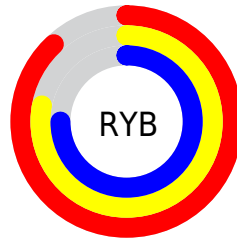
The HunterLab color $77.2384, 4.2150, 10.2728$ is a light color, and the websafe version is hex `FFCCCC`. A complement of this color would be $81.5627, -11.6505, -1.7277$, and the grayscale version is $77.9774, -4.1607, 4.2367$.

A 20% lighter version of the original color is $99.3969, -6.3642, 9.1286$, and $54.6682, 4.5710, 8.0985$ is the 20% darker color. If you saturate the color by 10%, you get $71.4560, 10.3326, 13.6750$, and if you desaturate by 10%, it is $83.2999, -1.5610, 6.7313$.

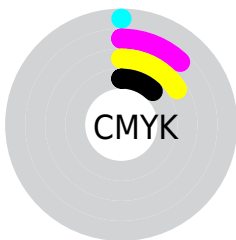
Distribution



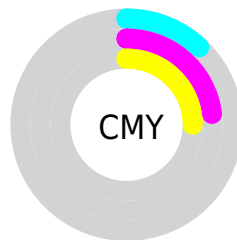
- Red (88%)
- Green (77%)
- Blue (75%)



- Red (88%)
- Yellow (78%)
- Blue (75%)



- Cyan (0%)
- Magenta (12%)
- Yellow (16%)
- Black (12%)



- Cyan (12%)
- Magenta (23%)
- Yellow (25%)

Brightness & Saturation Gradients


These gradients show how the HunterLab color 77.2384, 4.2150, 10.2728 changes by changing the brightness by 10 percent. The first figure shows a shift by +10% for each color and the second figure -10%.


Similar to the brightness gradients but the following saturation gradients show a change of the HunterLab color 77.2384, 4.2150, 10.2728 by changing the saturation by 10% instead.


 77.2384, 4.2150,
10.2728

 77.2384, 4.2150,
10.2728


205.7534, 0.4550,
19.7881

 65.6848, 4.4100,
9.2977

 102.1454, 3.6645,
12.2711

 54.7712, 4.5496,
8.3342


115.4412, 3.3213,
13.2937

 44.5396, 4.6249,
7.3808


129.2685, 2.9360,
14.3330

 35.0387, 4.6274,
6.4334

143.6076, 2.5112,
15.3895

 26.3300, 4.5453,
5.4851

158.4409, 2.0489,
16.4632

 18.4934, 4.3619,
4.5237

173.7524, 1.5511,

 11.6394, 4.0511,

17.5542

3.5312

189.5277, 1.0193,
18.6625

4.2781, 8.6782,
2.9947

0.0000, NaN, NaN

77.2384, 4.2150,
10.2728

77.2384, 4.2150,
10.2728

71.4560, 10.3326,
13.6750

83.2999, -1.5610,
6.7313

65.9890, 16.8185,
16.8874

89.6013, -7.0194,
3.0797

60.8885, 23.6662,
19.8456

96.0316, -12.6662,
0.5415

56.2130, 30.8273,
22.4610

97.3384, -14.7224,
2.0950

■ 52.0286, 38.1831,
24.6210

■ 48.4063, 45.5153,
26.1973

■ 45.4138, 52.4887,
27.0717

■ 43.1024, 58.6689,
27.1915

■ 42.2924, 61.0100,
27.1284

Harmonies

Analogous

The Analogous color harmony consists of three colors that are next to each other on the color wheel.



77.2401, 6.5545, 5.7881



77.2384, 4.2150, 10.2728



77.2401, -0.3459, 12.9998

Triad

The Triadic color harmony groups three colors that are evenly spaced from another and form a triangle on the color wheel.



77.2401, 4.2126, 10.2740



77.2401, -13.7308, 7.6817



77.2401, -2.4355, -6.3601

Complementary

The Complementary color scheme is a pair of colors which are on the opposite of each other on the color wheel.



77.2384, 4.2150, 10.2728



81.5627, -11.6505, -1.7277

Split Complementary

Split-complementary colors differ from the complementary color scheme. The scheme consists of three colors, the original color and two neighbors of the complement color.



77.2401, -7.8337, -5.7649



77.2384, 4.2150, 10.2728



77.2401, -14.2550, 2.5864

Square

The Square scheme is like the rectangle color scheme, but the four colors are evenly spaced on the color wheel.



77.2401, 4.2126, 10.2740



77.2401, -10.6718, 11.5772



77.2401, -12.1242, -2.4016



77.2401, 2.6464, -3.9754

Rectangle

The Rectangle color scheme consists of four colors that form a rectangle on the color wheel.



77.2384, 4.2150, 10.2728



77.2401, -3.9763, 13.5709



77.2401, -12.1242, -2.4016



77.2401, -4.2745, -6.5053

Sweetspot

The Sweet Spot groups the original color and five complimentary colors.



77.2401, 4.2126, 10.2740



96.3694, -2.1350, 7.5412



76.0902, 12.5702, -4.5785



44.3514, -0.7763, 3.6248

0.0000, NaN, NaN



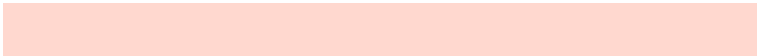
46.2646, -2.4686, 2.5136

Same Dimension

The Same Dimension uses a secret algorithm to generate beautiful new colors.



77.2401, 4.2126, 10.2740



86.5914, 7.3301, 13.2633



82.5061, -4.7991, 15.7478



37.6064, 0.2995, 3.7754



32.3091, 45.6697, 20.7082



9.2187, 9.9197, 5.8542

Inverse Universe

The Inverse Universe completely reimagines the original color for something new.



81.5627, -11.6505, -1.7277



92.6875, -15.0680, -3.6685



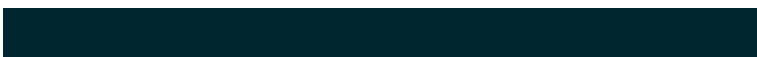
76.1083, -2.7959, -8.6447



38.8355, -4.2047, 0.3643



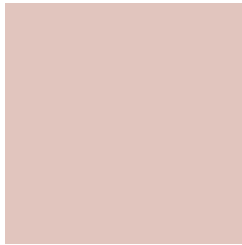
47.0167, -16.5307, -23.0817



12.8534, -4.9909, -5.2917

Previews

White Background



This preview shows how the HunterLab color 77.2384, 4.2150, 10.2728 looks on a white background.

Color Contrast Check

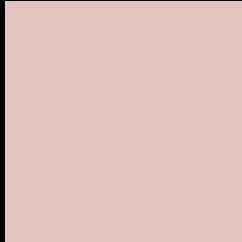
Large Text (above 18pt) WCAG AA × Fail

Any Text WCAG AA × Fail

Large Text (above 18pt) WCAG AAA × Fail

Any Text WCAG AAA × Fail

Black Background



This preview shows how the HunterLab color 77.2384, 4.2150, 10.2728 looks on a black background.

Color Contrast Check

Large Text (above 18pt) WCAG AA ✓ Pass

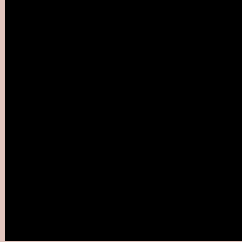
Any Text WCAG AA ✓ Pass

Large Text (above 18pt) WCAG AAA ✓ Pass

Any Text WCAG AAA ✓ Pass

If you want to check with other color combinations, try the [Color Contrast Checker](#).

HunterLab 77.2384, 4.2150, 10.2728 Background



This preview shows how black text looks on a background with the HunterLab color 77.2384, 4.2150, 10.2728.

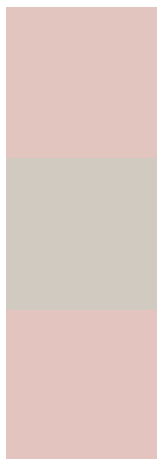


This preview shows how white text looks on a background with the HunterLab color 77.2384, 4.2150,

Color Blindness Simulation

Color vision deficiency is a very complex topic, and I could not describe the different causes any better than Wikipedia does, so if you want to learn more, you should check out their [article about color blindness](#).

Dichromacy



Original Color

77.2384, 4.2150, 10.2728

Protanopia

77.2312, -3.3199, 8.7996

Deuteranopia

77.1547, 5.4403, 10.2021



Tritanopia

77.1479, 9.5513, 1.3467

Trichromacy



Original Color

77.2384, 4.2150, 10.2728

Protanomaly

77.1760, -0.4637, 9.2357

Deuteranomaly

77.0495, 5.0874, 10.0800

Tritanomaly

77.1124, 7.5058, 4.6850

Monochromacy



Original Color

77.2384, 4.2150, 10.2728

Achromatopsia

78.1342, -4.1690, 4.2452

Achromatomaly

77.7227, -1.2092, 6.1869

CSS Examples

Text

The CSS property to change the color of the text to HunterLab 77.2384, 4.2150, 10.2728 is called "color". The color property can be set on classes, ids or directly on the HTML element.

This example shows how text in the color `rgb(225, 197, 190)` looks like.

```
.text, #text, p{  
  color:rgb(225, 197, 190)  
}
```

If you want to add a text shadow in that color use the text-shadow property, you can generate a text shadow directly with our [CSS Text Shadow Generator](#).

Here you see how black text with a 4 pixel rgb(225, 197, 190) colored shadow looks like.

```
.shadow{ text-shadow: 4px 4px 2px rgb(225, 197, 190) }
```

Border

The CSS property to change the border of an element to HunterLab 77.2384, 4.2150, 10.2728 is called "border". The border property can be set on classes, ids or directly on the HTML element.

This example shows the color as border, it can be applied via the CSS property "border" or "border-color".

```
.border, #border, table{ border:4px solid rgb(225, 197, 190) }
```


If only the border color should be changed use the property border-color.

```
.border{ border-color:rgb(225, 197, 190) }
```

If you want to add a box shadow in that color use:

Here you see how a box with a 4 pixel rgb(225, 197, 190) colored shadow looks like.

```
.boxshadow{ -moz-box-shadow:4px 4px 4px  
4px rgb(225, 197, 190); -webkit-box-  
shadow:4px 4px 4px 4px rgb(225, 197, 190);  
box-shadow:4px 4px 4px 4px rgb(225, 197,  
190) }
```

Background

The CSS property to change the background color of an element to HunterLab 77.2384, 4.2150, 10.2728 is called "background". The background property can be set on classes, ids or directly on the HTML element.

```
.background, #background, body{  
background: rgb(225, 197, 190) }
```

If only the background color should be changed can be used:

```
.background{ background-color: rgb(225,  
197, 190) }
```

This example shows the color as background, it is applied via the CSS property "background".

To optimize and compress your CSS code, you can use our [online CSS compressor and optimizer](#) based on csstidy. If you want to create a linear or radial gradient as background or border, check our [CSS Gradient Generator](#).

Hey! You found this booklet interesting? Support Converting Colors with the new Membership Option!

The pro membership hides all ads, plus gives you double the colors in the color bucket, and more awesome pro features!

[Learn more, Memberships starting at \\$2.50/m!](#)

**Follow me
on Twitter!**

@ConvertingColor