

Converting Colors

HunterLab(77.2377, 1.4988,
16.1619)

Have a look what the booklet for
HunterLab(77.2377, 1.4988,
16.1619) contains.

HunterLab(77.1559, 1.6631, 16.0089)	3
<i>Conversions</i>	4
<i>Details</i>	6
<i>Harmonies</i>	12
<i>Previews</i>	24
<i>Color Blindness Simulation</i>	28
<i>CSS Examples</i>	31

Color

**HunterLab(77.1559, 1.6631,
16.0089)**

Conversions

Conversions Part 1

Format	Color
Hex	E1C6B0
RGB	225, 198, 176
RGB Percent	88%, 78%, 69%
CMY	0.1176, 0.2235, 0.3098
CMYK	0.00, 0.12, 0.22, 0.12
HSL	27°, 45%, 79%
HSV	27°, 22%, 88%
XYZ	59.0819, 59.5303, 49.4509
YIQ	203.5650, 23.1540, -1.1180

Conversions

Conversions Part 2

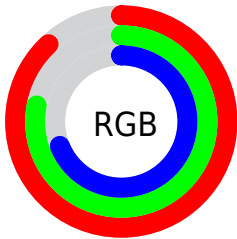
Format	Color
R _Y B	225, 216, 176
Decimal	14796464
CIE Lab	81.58, 6.10, 14.51
CIE LCh	82, 15.744, 67.191
Yxy	59.5330, 0.3515, 0.3542
Android (android.graphics.Color)	4292986544 (0xFFE1C6B0)
YUV	203.5650, -13.5895, 18.7985
Hunter-Lab	77.1559, 1.6631, 16.0089

Details

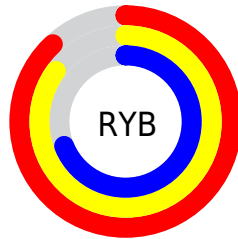
The HunterLab color $77.1559, 1.6631, 16.0089$ is a light color, and the websafe version is hex `FFCCCC`. A complement of this color would be $75.7475, -8.0148, -9.2227$, and the grayscale version is $77.5710, -4.1390, 4.2146$.

A 20% lighter version of the original color is $99.3007, -9.1806, 15.4448$, and $54.6000, 2.2347, 13.3349$ is the 20% darker color. If you saturate the color by 10%, you get $72.9916, 5.1026, 20.4098$, and if you desaturate by 10%, it is $81.4861, -1.4226, 11.0920$.

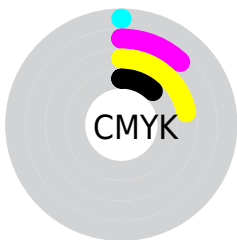
Distribution



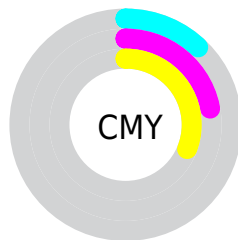
- Red (88%)
- Green (78%)
- Blue (69%)



- Red (88%)
- Yellow (85%)
- Blue (69%)



- Cyan (0%)
- Magenta (12%)
- Yellow (22%)
- Black (12%)



- Cyan (12%)
- Magenta (22%)
- Yellow (31%)

Brightness & Saturation Gradients

These gradients show how the HunterLab color 77.1559, 1.6631, 16.0089 changes by changing the brightness by 10 percent. The first figure shows a shift by +10% for each color and the second figure -10%.

Similar to the brightness gradients but the following saturation gradients show a change of the HunterLab color 77.1559, 1.6631, 16.0089 by changing the saturation by 10% instead.

■ 77.1559, 1.6631,
16.0089

■ 77.1559, 1.6631,
16.0089

205.6391, -3.0227,
28.2751

■ 65.6067, 1.9824,
14.6468

■ 102.0549, 0.8802,
18.7158

■ 54.6977, 2.2530,
13.2689

115.3469, 0.4277,
20.0665

■ 44.4709, 2.4673,
11.8673

129.1706, -0.0628,
21.4194

■ 34.9754, 2.6180,
10.4287

143.5062, -0.5893,
22.7765

■ 26.2724, 2.6957,
8.9328

158.3361, -1.1500,
24.1396

■ 18.4422, 2.6865,
7.3455

173.6444, -1.7434,

■ 11.5956, 2.5686,

25.5097

6.1655

189.4164, -2.3680,
26.8880

■ 4.1872, 6.1281,
2.9310

0.0000, NaN, NaN

■ 77.1559, 1.6631,
16.0089

■ 77.1559, 1.6631,
16.0089

■ 72.9916, 5.1026,
20.4098

■ 81.4861, -1.4226,
11.0920

■ 69.0040, 8.9272,
24.2259

■ 85.9624, -4.1737,
5.7144

■ 65.2128, 13.1518,
27.3877

■ 90.5741, -6.6201,
-0.0714

■ 61.6376, 17.7827,
29.8230

■ 94.9264, -10.9074,
-0.7887

■ 58.2990, 22.8083,
31.4653

■ 97.3384, -14.7224,
2.0950

■ 55.2181, 28.1903,
32.2660

■ 52.4146, 33.8530,
32.2184

■ 50.3219, 38.6029,
31.6839

Harmonies

Analogous

The Analogous color harmony consists of three colors that are next to each other on the color wheel.



77.1576, 7.9419, 12.1834



77.1559, 1.6631, 16.0089



77.1576, -5.9525, 16.8253

Triad

The Triadic color harmony groups three colors that are evenly spaced from another and form a triangle on the color wheel.



77.1576, 1.6606, 16.0100



77.1576, -18.1704, 2.4289



77.1576, 4.9671, -7.7909

Complementary

The Complementary color scheme is a pair of colors which are on the opposite of each other on the color wheel.



77.1559, 1.6631, 16.0089



75.7475, -8.0148, -9.2227

Split Complementary

Split-complementary colors differ from the complementary color scheme. The scheme consists of three colors, the original color and two neighbors of the complement color.



77.1576, -2.2724, -11.0016



77.1559, 1.6631, 16.0089



77.1576, -15.4857, -4.7399

Square

The Square scheme is like the rectangle color scheme, but the four colors are evenly spaced on the color wheel.



77.1576, 1.6606, 16.0100



77.1576, -17.2092, 9.4265



77.1576, -9.7374, -9.8340



77.1576, 9.9022, -1.4201

Rectangle

The Rectangle color scheme consists of four colors that form a rectangle on the color wheel.



77.1559, 1.6631, 16.0089



77.1576, -10.7240, 15.6315



77.1576, -9.7374, -9.8340



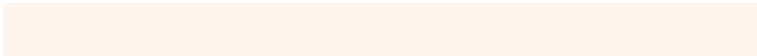
77.1576, 2.7116, -9.3024

Sweetspot

The Sweet Spot groups the original color and five complimentary colors.



77.1576, 1.6606, 16.0100



96.3268, -3.1844, 9.9145



71.6990, 17.5489, -2.6313



44.4204, -1.3835, 4.7604

0.0000, NaN, NaN



46.2646, -2.4686, 2.5136

Same Dimension

The Same Dimension uses a secret algorithm to generate beautiful new colors.



77.1576, 1.6606, 16.0100



86.7812, 3.6078, 20.7612



84.4060, -10.3791, 22.9761



38.3523, -0.9730, 4.5900



38.4945, 28.5757, 24.2204



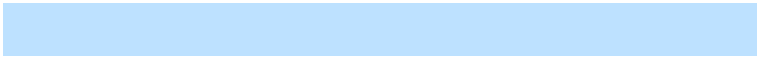
10.9725, 5.5668, 6.8587

Inverse Universe

The Inverse Universe completely reimagines the original color for something new.



75.7475, -8.0148, -9.2227



84.8372, -9.7077, -14.0119



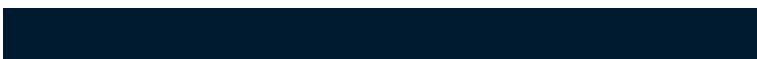
68.5670, 4.1052, -19.2741



38.0643, -2.9540, -0.5649



34.1617, 3.4431, -50.1317



9.9347, -0.7163, -10.8712

Previews

White Background



This preview shows how the HunterLab color 77.1559, 1.6631, 16.0089 looks on a white background.

Color Contrast Check

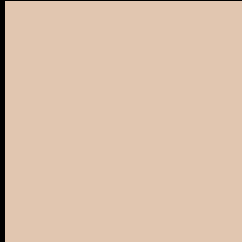
Large Text (above 18pt) WCAG AA × Fail

Any Text WCAG AA × Fail

Large Text (above 18pt) WCAG AAA × Fail

Any Text WCAG AAA × Fail

Black Background



This preview shows how the HunterLab color 77.1559, 1.6631, 16.0089 looks on a black background.

Color Contrast Check

Large Text (above 18pt) WCAG AA ✓ Pass

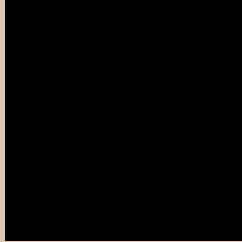
Any Text WCAG AA ✓ Pass

Large Text (above 18pt) WCAG AAA ✓ Pass

Any Text WCAG AAA ✓ Pass

If you want to check with other color combinations, try the [Color Contrast Checker](#).

HunterLab 77.1559, 1.6631, 16.0089 Background



This preview shows how black text looks on a background with the HunterLab color 77.1559, 1.6631, 16.0089.



This preview shows how white text looks on a background with the HunterLab color 77.1559, 1.6631,

Color Blindness Simulation

Color vision deficiency is a very complex topic, and I could not describe the different causes any better than Wikipedia does, so if you want to learn more, you should check out their [article about color blindness](#).

Dichromacy



Original Color

77.1559, 1.6631, 16.0089

Protanopia

77.1054, -4.5813, 15.0441

Deuteranopia

77.0457, 5.8690, 15.5688



Tritanopia

77.0403, 10.6117, 1.7323

Trichromacy



Original Color

77.1559, 1.6631, 16.0089

Protanomaly

77.2653, -2.5205, 15.6483

Deuteranomaly

77.0144, 4.2638, 15.5084

Tritanomaly

77.1425, 7.2447, 7.5231

Monochromacy



Original Color

77.1559, 1.6631, 16.0089

Achromatopsia

77.7063, -4.1462, 4.2219

Achromatomaly

77.5456, -2.1742, 8.7217

CSS Examples

Text

The CSS property to change the color of the text to HunterLab 77.1559, 1.6631, 16.0089 is called "color". The color property can be set on classes, ids or directly on the HTML element.

This example shows how text in the color `rgb(225, 198, 176)` looks like.

```
.text, #text, p{  
    color:rgb(225, 198, 176)  
}
```

If you want to add a text shadow in that color use the text-shadow property, you can generate a text shadow directly with our [CSS Text Shadow Generator](#).

Here you see how black text with a 4 pixel rgb(225, 198, 176) colored shadow looks like.

```
.shadow{ text-shadow: 4px 4px 2px rgb(225, 198, 176) }
```

Border

The CSS property to change the border of an element to HunterLab 77.1559, 1.6631, 16.0089 is called "border". The border property can be set on classes, ids or directly on the HTML element.

This example shows the color as border, it can be applied via the CSS property "border" or "border-color".

```
.border, #border, table{ border:4px solid rgb(225, 198, 176) }
```


If only the border color should be changed use the property `border-color`.

```
.border{ border-color:rgb(225, 198, 176) }
```

If you want to add a box shadow in that color use:

Here you see how a box with a 4 pixel `rgb(225, 198, 176)` colored shadow looks like.

```
.boxshadow{ -moz-box-shadow:4px 4px 4px 4px rgb(225, 198, 176); -webkit-box-shadow:4px 4px 4px 4px rgb(225, 198, 176); box-shadow:4px 4px 4px 4px rgb(225, 198, 176) }
```

Background

The CSS property to change the background color of an element to HunterLab 77.1559, 1.6631, 16.0089 is called "background". The background property can be set on classes, ids or directly on the HTML element.

```
.background, #background, body{  
background: rgb(225, 198, 176) }
```

If only the background color should be changed can be used:

```
.background{ background-color: rgb(225,  
198, 176) }
```

This example shows the color as background, it is applied via the CSS property "background".

To optimize and compress your CSS code, you can use our [online CSS compressor and optimizer](#) based on csstidy. If you want to create a linear or radial gradient as background or border, check our [CSS Gradient Generator](#).

Hey! You found this booklet interesting? Support Converting Colors with the new Membership Option!

The pro membership hides all ads, plus gives you double the colors in the color bucket, and more awesome pro features!

[Learn more, Memberships starting at \\$2.50/m!](#)

**Follow me
on Twitter!**

@ConvertingColor