

Converting Colors

HunterLab(77.3700, 2.1900,
17.8022)

Have a look what the booklet for
HunterLab(77.3700, 2.1900,
17.8022) contains.

HunterLab(77.3697, 2.1881, 17.8039)	3
<i>Conversions</i>	4
<i>Details</i>	6
<i>Harmonies</i>	12
<i>Previews</i>	24
<i>Color Blindness Simulation</i>	28
<i>CSS Examples</i>	31

Color

**HunterLab(77.3697, 2.1881,
17.8039)**

Conversions

Conversions Part 1

Format	Color
Hex	E4C6AC
RGB	228, 198, 172
RGB Percent	89%, 78%, 67%
CMY	0.1059, 0.2235, 0.3255
CMYK	0.00, 0.13, 0.25, 0.11
HSL	28°, 51%, 78%
HSV	28°, 25%, 89%
XYZ	59.6354, 59.8607, 47.4408
YIQ	204.0060, 26.2260, -1.7260

Conversions

Conversions Part 2

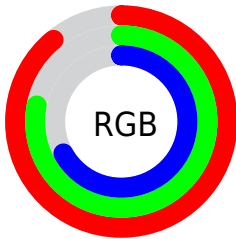
Format	Color
R _Y B	228, 221, 172
Decimal	14993068
CIE Lab	81.76, 6.66, 16.94
CIE LCh	82, 18.196, 68.547
Yxy	59.8634, 0.3572, 0.3586
Android (android.graphics.Color)	4293183148 (0xFFE4C6AC)
YUV	204.0060, -15.7790, 21.0427
Hunter-Lab	77.3697, 2.1881, 17.8039

Details

The HunterLab color $77.3697, 2.1881, 17.8039$ is a light color, and the websafe version is hex `FFCCCC`. A complement of this color would be $75.2407, -7.9823, -11.6156$, and the grayscale version is $77.7678, -4.1495, 4.2253$.

A 20% lighter version of the original color is $99.1595, -9.9601, 17.4742$, and $54.8391, 2.9071, 14.6310$ is the 20% darker color. If you saturate the color by 10%, you get $73.2811, 5.6100, 22.1803$, and if you desaturate by 10%, it is $81.6248, -0.8667, 12.8647$.

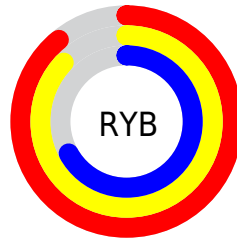
Distribution



Red (89%)

Green (78%)

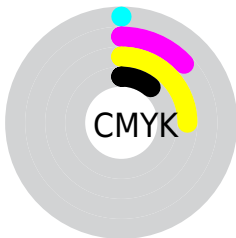
Blue (67%)



Red (89%)

Yellow (87%)

Blue (67%)

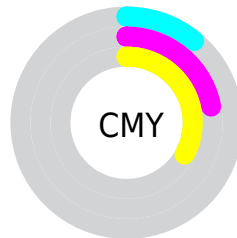


Cyan (0%)

Magenta (13%)

Yellow (25%)

Black (11%)



Cyan (11%)


Magenta (22%)

Yellow (33%)

Brightness & Saturation Gradients

These gradients show how the HunterLab color 77.3697, 2.1881, 17.8039 changes by changing the brightness by 10 percent. The first figure shows a shift by +10% for each color and the second figure -10%.


Similar to the brightness gradients but the following saturation gradients show a change of the HunterLab color 77.3697, 2.1881, 17.8039 by changing the saturation by 10% instead.

 77.3697, 2.1881,
17.8039

 77.3697, 2.1881,
17.8039


205.9355, -2.3091,
31.0018

 65.8092, 2.4820,
16.3099


 102.2896, 1.4524,
20.7518

 54.8883, 2.7260,
14.7905


115.5913, 1.0222,
22.2138

 44.6489, 2.9120,
13.2357


129.4244, 0.5531,
23.6729

 35.1397, 3.0326,
11.6291

143.7691, 0.0473,
25.1319

 26.4218, 3.0779,
9.9458

158.6078, -0.4933,
26.5927

 18.5750, 3.0334,
8.1454

173.9245, -1.0672,

 11.7094, 2.8766,

28.0571

7.0117

189.7048, -1.6729,
29.5265

■ 4.4190, 6.3264,
3.0933

0.0000, NaN, NaN

■ 77.3697, 2.1881,
17.8039

■ 77.3697, 2.1881,
17.8039

■ 73.2811, 5.6100,
22.1803

■ 81.6248, -0.8667,
12.8647

■ 69.3694, 9.4293,
25.9233

■ 86.0271, -3.5730,
7.4207

■ 65.6538, 13.6590,
28.9631

■ 90.5658, -5.9605,
1.5277

■ 62.1526, 18.3028,
31.2297

■ 94.9458, -9.6218,
-0.7421

■ 58.8854, 23.3456,
32.6629

■ 97.5879, -13.8312,
2.4117

■ 55.8712, 28.7449,
33.2267

■ 53.1270, 34.4190,
32.9365

■ 51.7462, 37.5472,
32.5431

Harmonies

Analogous

The Analogous color harmony consists of three colors that are next to each other on the color wheel.



77.3715, 9.6211, 13.6289



77.3697, 2.1881, 17.8039



77.3715, -6.6436, 18.5612

Triad

The Triadic color harmony groups three colors that are evenly spaced from another and form a triangle on the color wheel.



77.3715, 2.1855, 17.8050



77.3715, -20.2406, 1.7686



77.3715, 6.7519, -9.5380

Complementary

The Complementary color scheme is a pair of colors which are on the opposite of each other on the color wheel.



77.3697, 2.1881, 17.8039



75.2407, -7.9823, -11.6156

Split Complementary

Split-complementary colors differ from the complementary color scheme. The scheme consists of three colors, the original color and two neighbors of the complement color.



77.3715, -1.5890, -13.5535



77.3697, 2.1881, 17.8039



77.3715, -16.9878, -6.5621

Square

The Square scheme is like the rectangle color scheme, but the four colors are evenly spaced on the color wheel.



77.3715, 2.1855, 17.8050



77.3715, -19.3316, 9.8973



77.3715, -10.2541, -12.4073



77.3715, 12.3388, -1.9414

Rectangle

The Rectangle color scheme consists of four colors that form a rectangle on the color wheel.



77.3697, 2.1881, 17.8039



77.3715, -12.0922, 17.1162



77.3715, -10.2541, -12.4073



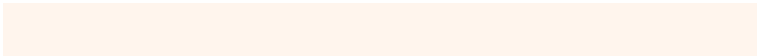
77.3715, 4.1626, -11.3881

Sweetspot

The Sweet Spot groups the original color and five complimentary colors.



77.3715, 2.1855, 17.8050



96.4126, -3.3288, 10.0089



70.9239, 20.6073, -3.0644



44.4635, -1.4561, 4.8076

0.0000, NaN, NaN



46.2646, -2.4686, 2.5136

Same Dimension

The Same Dimension uses a secret algorithm to generate beautiful new colors.



77.3715, 2.1855, 17.8050



85.6727, 4.2226, 22.5926



85.6922, -11.6040, 25.5950



39.3263, -1.0735, 4.7586



39.6155, 27.8175, 24.8979



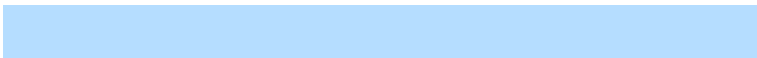
11.5934, 5.6607, 7.2429

Inverse Universe

The Inverse Universe completely reimagines the original color for something new.



75.2407, -7.9823, -11.6156



82.8150, -9.3846, -16.8669



67.0485, 5.9503, -23.4866



38.9350, -2.9484, -0.6446



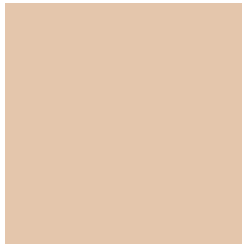
33.9547, 4.8911, -52.9989



10.1858, -0.3571, -11.9605

Previews

White Background



This preview shows how the HunterLab color 77.3697, 2.1881, 17.8039 looks on a white background.

Color Contrast Check

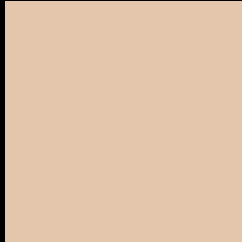
Large Text (above 18pt) WCAG AA × Fail

Any Text WCAG AA × Fail

Large Text (above 18pt) WCAG AAA × Fail

Any Text WCAG AAA × Fail

Black Background



This preview shows how the HunterLab color 77.3697, 2.1881, 17.8039 looks on a black background.

Color Contrast Check

Large Text (above 18pt) WCAG AA ✓ Pass

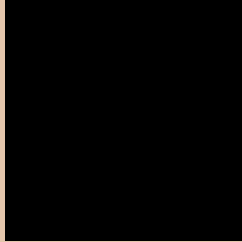
Any Text WCAG AA ✓ Pass

Large Text (above 18pt) WCAG AAA ✓ Pass

Any Text WCAG AAA ✓ Pass

If you want to check with other color combinations, try the [Color Contrast Checker](#).

HunterLab 77.3697, 2.1881, 17.8039 Background



This preview shows how black text looks on a background with the HunterLab color 77.3697, 2.1881, 17.8039.



This preview shows how white text looks on a background with the HunterLab color 77.3697, 2.1881,

Color Blindness Simulation

Color vision deficiency is a very complex topic, and I could not describe the different causes any better than Wikipedia does, so if you want to learn more, you should check out their [article about color blindness](#).

Dichromacy



Original Color

77.3697, 2.1881, 17.8039

Protanopia

77.5010, -4.9722, 17.0338

Deuteranopia

77.4279, 5.4007, 17.9185



Tritanopia

77.3627, 11.6694, 2.1408

Trichromacy



Original Color

77.3697, 2.1881, 17.8039

Protanomaly

77.3631, -2.3859, 17.3298

Deuteranomaly

77.5028, 4.1509, 17.9716

Tritanomaly

77.4334, 8.1531, 8.3244

Monochromacy



Original Color

77.3697, 2.1881, 17.8039

Achromatopsia

77.7063, -4.1462, 4.2219

Achromatomaly

77.5841, -2.1562, 9.6591

CSS Examples

Text

The CSS property to change the color of the text to HunterLab 77.3697, 2.1881, 17.8039 is called "color". The color property can be set on classes, ids or directly on the HTML element.

This example shows how text in the color `rgb(228, 198, 172)` looks like.

```
.text, #text, p{  
    color:rgb(228, 198, 172)  
}
```

If you want to add a text shadow in that color use the text-shadow property, you can generate a text shadow directly with our [CSS Text Shadow Generator](#).

Here you see how black text with a 4 pixel rgb(228, 198, 172) colored shadow looks like.

```
.shadow{ text-shadow: 4px 4px 2px rgb(228, 198, 172) }
```

Border

The CSS property to change the border of an element to HunterLab 77.3697, 2.1881, 17.8039 is called "border". The border property can be set on classes, ids or directly on the HTML element.

This example shows the color as border, it can be applied via the CSS property "border" or "border-color".

```
.border, #border, table{ border:4px solid rgb(228, 198, 172) }
```


If only the border color should be changed use the property `border-color`.

```
.border{ border-color:rgb(228, 198, 172) }
```

If you want to add a box shadow in that color use:

Here you see how a box with a 4 pixel `rgb(228, 198, 172)` colored shadow looks like.

```
.boxshadow{ -moz-box-shadow:4px 4px 4px  
4px rgb(228, 198, 172); -webkit-box-  
shadow:4px 4px 4px 4px rgb(228, 198, 172);  
box-shadow:4px 4px 4px 4px rgb(228, 198,  
172) }
```

Background

The CSS property to change the background color of an element to HunterLab 77.3697, 2.1881, 17.8039 is called "background". The background property can be set on classes, ids or directly on the HTML element.

```
.background, #background, body{  
background: rgb(228, 198, 172) }
```

If only the background color should be changed can be used:

```
.background{ background-color: rgb(228,  
198, 172) }
```

This example shows the color as background, it is applied via the CSS property "background".

To optimize and compress your CSS code, you can use our [online CSS compressor and optimizer](#) based on csstidy. If you want to create a linear or radial gradient as background or border, check our [CSS Gradient Generator](#).

Hey! You found this booklet interesting? Support Converting Colors with the new Membership Option!

The pro membership hides all ads, plus gives you double the colors in the color bucket, and more awesome pro features!

[Learn more, Memberships starting at \\$2.50/m!](#)

**Follow me
on Twitter!**

@ConvertingColor